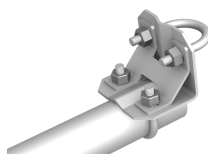


Rugged, Reliable, and Ready for any Application



MAJOR SPECIFICATIONS

CM220 | Right-Angle Mounting Bracket



Description

Consists of a bracket and two 1.5-in. U-bolts.

Weight: 0.29 kg (0.65 lb)
Dimensions: 6 x 6 x 8 cm (2.25 x 2.25 x 3 in.)

Compatible Sensors or Peripherals

Sensors/peripherals with 0.75 in. to 1 in. IPS (1 in. to 1.5 in. OD) pipe mount, which includes:

- most wind sensors
- 52202 electric heated rain gage
- WXT520 weather sensor

Mounts to

- CM200-series aluminum crossarms
- CM202SS/CM204SS stainless-steel crossarms
- user-supplied 0.75 in. to 1 in. IPS pipe (1 in. to 1.5 in. OD)

1049 | 0.75-inch-by-1-inch NU-RAIL Crossover Fitting



Description

Consists of two ovoid segments oriented at a 90° angle. One segment accepts 0.75 in. IPS pipe (1.05 in. OD) and the other segment accepts 1 in. IPS pipe (1.315 in. OD)

Compatible Sensors or Peripherals

Sensors/peripherals with 0.75 in. IPS (1.05 in. OD) pipe mount, which includes:

- 03101 anemometer
- 014A anemometer
- 27106T vertical anemometer
- 17992 GPS antenna

Mounts to

- CM200-series aluminum crossarms
- user-supplied 1.0 in. IPS pipe (1.32 in. OD)

17953 | 1 x 1 in. NU-RAIL Crossover Fitting



Description

Consists of two ovoid segments oriented at a 90° angle. Both segments accept a 1 in. IPS pipe (1.315 in. OD).

Compatible Sensors or Peripherals

Sensors/peripherals with 1.0 in. IPS (1.32 in. OD) pipe mount, which includes:

- 024A wind vane
- 034B wind sensor
- 03002 wind sensor
- all Wind Monitors
- WXT520 weather sensor

Mounts to

- CM200-series aluminum crossarms
- user-supplied 1.0 in. IPS pipe (1.32 in. OD)

1017 | 0.75-inch-by-0.75 inch NU-RAIL Crossover Fitting



Description

Consists of two ovoid segments oriented at a 90° angle. Both segments accept a 0.75 in. IPS pipe (1.05 in. OD)

Compatible Sensors or Peripherals

Sensors/peripherals with 0.75 in. IPS (1.05 in. OD) pipe mount, which includes:

- 03101 anemometer
- 014A anemometer
- 27106T vertical anemometer
- 17992 GPS antenna

Mounts to

- user-supplied 0.75 in. IPS pipe (1.05 in. OD)

CM235 | Magnetic Mounting Stand



Description

Consists of a 9 cm by 9 cm (3.5 in. by 3.5 in.) platform, mounting bracket, and mounting hardware.

Weight: 0.32 kg (0.7 lb)
Dimensions: 8.9 x 11.4 x 6.4 cm (3.5 x 4.5 x 2.5 in.)

Compatible Sensors or Peripherals

Devices with a magnetic base, which includes:

- GPS 16X-HVS Geographic Position Receiver
- GPS antennas
- short-range omnidirectional antennas

Mounts to

U-bolt in bottom holes:

- CM200-series aluminum crossarms
- CM202SS/CM204SS stainless-steel crossarms

U-bolt in side holes:

- tripod or tower mast
- user-supplied 0.75 in. to 1 in. IPS pipe (1 in. to 1.5 in. OD)

18098 | Eppley Solar Sensor or Cellular Antenna Mounting Stand



Description

Consists of a rectangular plate, mounting bracket, and mounting hardware.

Compatible Sensors or Peripherals

- Eppley solar sensor
- 18285 omnidirectional antenna (shipped with 18285 antenna)

Mounts to



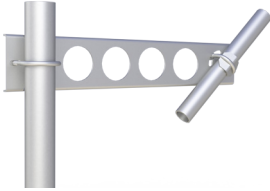
U-bolt in bottom holes:

- CM200-series aluminum crossarms
- CM202SS/CM204SS stainless-steel crossarms

U-bolt in side holes:

- tripod or tower mast
- user-supplied 0.75 in. to 1 in. IPS pipe (1 in. to 1.5 in. OD)



	<i>Description</i>	<i>Compatible Sensors or Peripherals</i>	<i>Mounts to</i>
30626 3/4 in. IPS or GPS Antenna Mounting Stand 	<p>Consist of:</p> <ul style="list-style-type: none"> • Base: 14-gage cold-rolled steel, powder-coated black • 1.9 cm (0.75 in) IPS threaded aluminum pipe fitting and spacer • Stainless-steel U-bolt and washers, brass nuts <p>Overall dimensions: 8.89 x 5.48 x 8.89 cm (3.5 x 2.157 x 3.5 in)</p>	<ul style="list-style-type: none"> • 17992 GPS antenna • 30741 Iridium antenna • Other antennas with 3/4 in. IPS mounting threads 	<ul style="list-style-type: none"> • CM200-series aluminum crossarms • CM202SS/CM204SS stainless-steel crossarms • user-supplied 0.75 in. to 1 in. IPS pipe (1 in. to 1.5 in. OD)
CM230 Adjustable Inclination Mount 	<p>Slots allow adjustment to any angle from horizontal to vertical.</p> <p>Withstands 150 mph wind with ice.</p> <p>Weight: 0.34 kg (0.75 lb)</p> <p>Dimensions: 7.6 x 9.5 x 8.9 cm (3 x 3.75 x 3.5 in)</p>	<ul style="list-style-type: none"> • Directional (Yagi) antennas • Sensors that are pointed at a specific target (SI-111, SR50A) 	<ul style="list-style-type: none"> • CM200-series aluminum crossarms • CM202SS/CM204SS stainless-steel crossarms • user-supplied 0.75 in. to 1 in. IPS pipe (1 in. to 1.5 in. OD)
CM230XL Adjustable Inclination Mount, Extended Length 	<p>Slots allow adjustment to any angle from horizontal to vertical. Longer length places antenna or sensor away from mast or pole.</p> <p>Withstands 150 mph wind.</p> <p>Weight: 0.61 kg (1.35 lb)</p> <p>Width: 7.6 cm (3 in)</p> <p>Length: 47 cm (18.5 in.)</p>	<ul style="list-style-type: none"> • Directional (Yagi) antennas • Sensors that are pointed at a specific target (SI-111, SR50A) <p>Sensor/antenna weight limits:</p> <ul style="list-style-type: none"> • <11 kg (24 lb) if attached to a mast • <4 kg (9 lb) if attached to a crossarm and CM230XL is positioned horizontally. 	<ul style="list-style-type: none"> • CM200-series aluminum crossarms • CM202SS/CM204SS stainless-steel crossarms • user-supplied 0.75 in. to 1 in. IPS pipe (1 in. to 1.5 in. OD)