

INSTRUCTION MANUAL



QD1 Incremental Encoder Interface

Revision: 12/91

Copyright © 1987-1991
Campbell Scientific, Inc.

Warranty and Assistance

The **QD1 INCREMENTAL ENCODER INTERFACE** is warranted by CAMPBELL SCIENTIFIC, INC. to be free from defects in materials and workmanship under normal use and service for twelve (12) months from date of shipment unless specified otherwise. Batteries have no warranty. CAMPBELL SCIENTIFIC, INC.'s obligation under this warranty is limited to repairing or replacing (at CAMPBELL SCIENTIFIC, INC.'s option) defective products. The customer shall assume all costs of removing, reinstalling, and shipping defective products to CAMPBELL SCIENTIFIC, INC. CAMPBELL SCIENTIFIC, INC. will return such products by surface carrier prepaid. This warranty shall not apply to any CAMPBELL SCIENTIFIC, INC. products which have been subjected to modification, misuse, neglect, accidents of nature, or shipping damage. This warranty is in lieu of all other warranties, expressed or implied, including warranties of merchantability or fitness for a particular purpose. CAMPBELL SCIENTIFIC, INC. is not liable for special, indirect, incidental, or consequential damages.

Products may not be returned without prior authorization. The following contact information is for US and International customers residing in countries served by Campbell Scientific, Inc. directly. Affiliate companies handle repairs for customers within their territories. Please visit www.campbellsci.com to determine which Campbell Scientific company serves your country. To obtain a Returned Materials Authorization (RMA), contact CAMPBELL SCIENTIFIC, INC., phone (435) 753-2342. After an applications engineer determines the nature of the problem, an RMA number will be issued. Please write this number clearly on the outside of the shipping container. CAMPBELL SCIENTIFIC's shipping address is:

CAMPBELL SCIENTIFIC, INC.

RMA# _____

815 West 1800 North

Logan, Utah 84321-1784

CAMPBELL SCIENTIFIC, INC. does not accept collect calls.

QD1 Table of Contents

PDF viewers note: These page numbers refer to the printed version of this document. Use the Adobe Acrobat® bookmarks tab for links to specific sections.

1. Function	1
2. Specifications	1
3. Connections	1
4. Datalogger Programming	1
4.1 Powering the QD1	2
4.2 Measurement.....	2
4.3 Processing.....	2
5. Entering the Reference Offset	2
6. On-Site Check-Out	2
7. Range vs. Resolution	2
8. QD1 Timing Diagram	3
 Appendix	
A. Shaft Encoder Connections and Example Program	A-1
A.1 Shaft Encoder Connections.....	A-1
A.2 Example Program	A-1

QD1 INCREMENTAL ENCODER INTERFACE

1. FUNCTION

The QD1 is designed as a general purpose quadrature decoder to interface CSI's CR10, 21X, and CR7 dataloggers to incremental encoders. This manual focuses on using the QD1 with commercially available shaft encoders used in water level applications (see Appendix). If there are other incremental encoders of interest, please contact CSI's Marketing Department for support.

As the encoder rotates, it produces two square waves which are 90° out of phase with each other. When the rotation is reversed, the relation of the two square waves is reversed. The QD1 decodes the two square waves and gates a voltage pulse to a datalogger pulse counting channel (refer to Section 8). Two pulse counting channels are required, one for each direction of encoder rotation.

2. SPECIFICATIONS

Datalogger compatibility: CR10, 21X, CR7
 Power supply: 4 to 5.6 V
 Current drain: 0.2 to 0.4 mA avg.
 Operating temperature: -25 to +50°C.
 Humidity: 0 to 95%, noncondensing
 Minimum time between input transitions:
 0.75 ms***
 Output pulse width: 0.25 ms @ 25°C
 Signal magnitude, Volts: 0 (low), supply voltage (high)
 Dimensions (L x W x D, inches): 2.9 x 1.7 x 0.85
 Weight (lbs.): 0.22

***NOTE: The minimum time between input transitions implies a rate of 1333.3 counts/sec. To realize this specification, the time between transitions must be evenly spaced; a function of the encoder. A diagram explaining "minimum time between transitions" is given in Table 1, Section 8.

3. CONNECTIONS

Connections between the QD1 and the datalogger are shown below. Connections from the QD1 to two commercially available shaft encoders are shown in the Appendix.

<u>(datalogger side)</u>	<u>QD1 DATALOGGER</u>
+5	+5V (CR10) or CAO (21X, CR7)
P1	PULSE CHANNEL
P2	PULSE CHANNEL
GRND	G (CR10) or GRND (21X, CR7)

NOTE: Datalogger pulse input channels should be sequential for efficient datalogger programming.

4. DATALOGGER PROGRAMMING

The program must measure the QD1 output and process the "up" and "down" counts to determine stage. For 21X and CR7 dataloggers, an additional step is required to power the QD1 from a Continuous Analog Output (CAO) channel. The following steps outline the procedure. Notes on the various steps are presented in following sub-sections. An example program is given in the Appendix.

1. Load QD1 power supply level, 5000 mV, into an input location (Instruction 30, required for 21X and CR7 only)
2. Enable CAO to output QD1 supply voltage (Instruction 21; required for 21X and CR7 only)
3. Measure QD1 up count and down count output on 2 pulse count channels (Instruction 3, 2 reps, high frequency option)
4. Stage = up count + stage (Instruction 33)
5. Stage = stage - down count (Instruction 35)

QD1 INCREMENTAL ENCODER INTERFACE

4.1 POWERING THE QD1

21X and CR7 - 5 VDC must be supplied to the QD1 continuously. When used with the 21X or CR7 dataloggers, a Continuous Analog Output (CAO) port may be programmed to power the QD1. CAO channels are located on the panel of the 21X and the 725 Excitation Card of the CR7. Instructions to send 5 V out the CAO port should occur before the measurement instruction, and must be repeated at least every minute. This implies a maximum program execution interval of one minute. If the CAO voltage is not refreshed every minute, the voltage level may sag below the minimum QD1 operating voltage.

CR10 - When used with the CR10, the QD1 may be connected to one of the two 5 VDC terminals located on the CR10WP Wiring Panel.

4.2 MEASUREMENT

Output from the QD1 is measured with I/O Instruction 3 (Pulse Count), using the high frequency option. Two pulse count channels must be measured, one for "up" counts and one for "down".

The Multiplier to be used depends on the number of counts per revolution of the shaft encoder and the circumference of the attached wheel, as shown below.

$$\text{MULTIPLIER} = \frac{\text{WHEEL CIRCUMFERENCE}}{(\text{COUNTS/REVOLUTION})}$$

Engineering units logged by the datalogger are the same as those used for wheel circumference.

An Offset of zero should be entered in the Pulse Count I/O Instruction. Section 5 discusses entering an offset to set the measurement equal to a reference elevation.

4.3 PROCESSING

Processing Instructions are used to determine the stage from the measured up and down counts. The new stage is calculated by adding

the existing stage to the up counts and storing the sum back in the existing stage location. The down count value is then subtracted from the sum, and the result is stored back in the stage location. This routine minimizes the number of Input Locations required to calculate stage.

5. ENTERING THE REFERENCE OFFSET

The offset, which sets the stage value equal to some reference point, should be entered after the system has been installed and the float is resting on the water surface. Enter the *6 Mode and advance to the stage Input Location. Press the "C" key to enable the *6C function, allowing a value to be entered into the stage Input Location. Key in the reference offset and press the "A" key to view the offset value now located in the stage Input Location. Refer to the *6 Mode in the datalogger manual(s) for additional information on the *6C function.

If changes to the datalogger program are made and the program is recompiled in the *0 Mode, all *6C entries are erased. THE REFERENCE OFFSET SHOULD BE ENTERED AFTER ALL PROGRAM CHANGES HAVE BEEN MADE.

6. ON-SITE CHECK-OUT

Testing is recommended to ensure that when the float rises or falls, the correct pulse counting channel is incremented. While viewing the stage Input Location in the *6 Mode, rotate the shaft in the direction corresponding to a rise in stage. Wait for the next program execution and confirm that the reading increases. If the reading decreases, simply exchange the input leads to the pulse count channels.

7. RANGE VS. RESOLUTION

If recorded data are to reflect the resolution of the encoder, consideration must be given to the datalogger output resolution as well as the reference offset. Table 7.1 shows minimum and maximum values stored in the datalogger using low and high resolution, and associated memory consumption.

TABLE 1. Datalogger Maximum and Minimum Range Limits and Storage Efficiency for Given Output Resolution

	<u>Zero</u>	<u>Minimum Magnitude</u>	<u>Maximum Magnitude</u>	<u>Final Memory Locations/Data Pt.</u>
Low Resolution	0.000	±0.001	±6999.	1
High Resolution	0.000	±0.00001	±99999.	2

The resolution of the low resolution format is reduced to 3 significant digits when the first (left most) digit is 7 or greater, as shown in Table 2.

TABLE 2. Format Range and Decimal Location for Datalogger Low Resolution Output

<u>Range (Absolute Value)</u>	<u>Decimal Location</u>
0-6.999	X.XXX
7-69.99	XX.XX
70-699.9	XXX.X
700-6999.	XXXX.

It may be necessary to use high resolution or an offset to maintain the desired resolution. For example, if water level is to be measured and output to the nearest 0.01 ft., the level must be

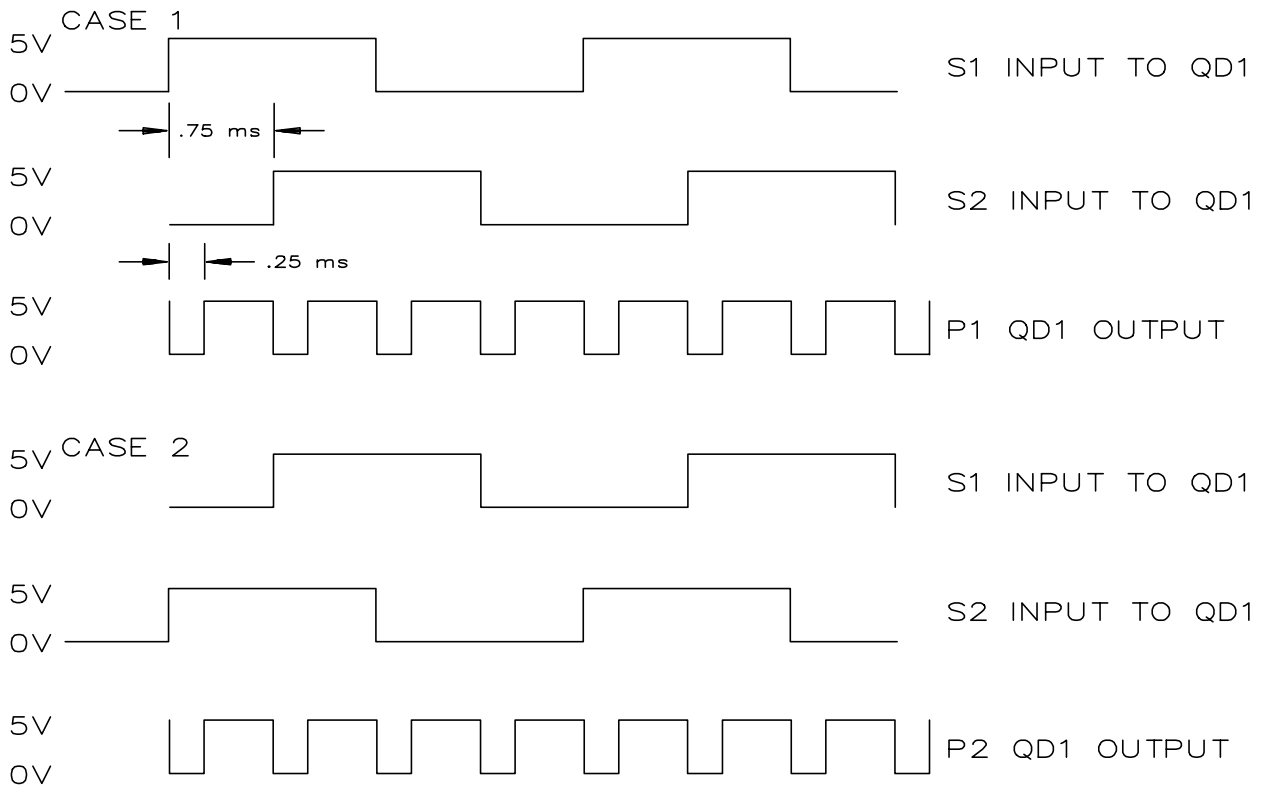
less than 70 ft. for 0.01 ft. increments to be maintained in low resolution. If the water level is expected to range from 50 to 80 feet, the data could either be output in high resolution or could be offset by -20 ft., transforming the range to 30 to 60 ft. If the datalogger's storage capacity is limiting, it is best to maintain the measurement resolution with an offset and store the data in the more memory efficient low resolution format.

8. QD1 TIMING DIAGRAM

Figure 1 is a simplified timing diagram of the pulses into and out of the QD1. In actual operation, the 5 V supply to the encoder is strobed which causes the encoder output (S1, S2 QD1 inputs) to be strobed. S1 and S2 inputs are shown as full square waves in Figure 1 for ease of conception. The time between transitions shown is the minimum 0.75 ms.

QD1 INCREMENTAL ENCODER INTERFACE

FIGURE 1. QD1 Timing Diagram



	<u>TRANSITION OF</u>	<u>WHEN</u>	<u>GATE PULSE TO</u>
CASE 1	S1 TO HIGH	S2 IS LOW	P1
	S2 TO HIGH	S1 IS HIGH	P1
	S1 TO LOW	S2 IS HIGH	P1
	S2 TO LOW	S1 IS LOW	P1
CASE 2	S2 TO HIGH	S1 IS LOW	P2
	S1 TO HIGH	S2 IS HIGH	P2
	S2 TO LOW	S1 IS HIGH	P2
	S1 TO LOW	S2 IS LOW	P2

APPENDIX A. SHAFT ENCODER CONNECTIONS AND EXAMPLE PROGRAM

A.1 SHAFT ENCODER CONNECTIONS

QD1 to shaft encoder connections shown below are for HANDAR's Model 436A and SYNERGETICS's Model 501A. These connections were verified in July of 1987. CSI is not responsible for subsequent changes in encoder pin configurations by the respective vendors.

ENCODER 6 PIN CONNECTOR	QD1 (encoder side) CONNECTIONS TO HANDAR	SYNERGETICS
A	N/C	GROUND
B	N/C	S1 or S2
C	+5	N/C
D	S1 or S2	GROUND
E	S1 or S2	S1 or S2
F	GROUND	N/C

A.2 EXAMPLE PROGRAM

The following program is an example only and is not meant to be used verbatim. Sensor calibration, input channels, and Input Locations selected must be adjusted for actual circumstances. The example goes so far as to place the calculated stage into an Input Location only. The user must program the necessary instructions to obtain the data in the form desired, and store it in Final Memory.

In this example the reference offset would be keyed into Input Location 4 (STAGE) via *6C. Refer to the *6 Mode in the datalogger manual for detailed information on the *6C function.

*	1	Table 1 Programs	
01:	60	Sec. Execution Interval	
01:	P30	Z=F	LOAD THE POWER SUPPLY mV
01:	5000	F	LEVEL INTO LOCATION 1
02:	1	Z Loc [:mV LEVEL]	
02:	P21	Analog Out	ENABLE CAO 1 TO OUTPUT
01:	1	CAO Chan	5000 mV TO POWER THE QD1
02:	1	mV Loc mV LEVEL	

THE STEPS ABOVE ARE REQUIRED FOR 21X AND CR7 DATALOGGERS ONLY.

03:	P3	Pulse Count	MEASURE THE TWO PULSE
01:	2	Reps	COUNT CHANNELS
02:	1	Pulse Input Chan	LOCATION 2 = UP COUNT
03:	0	High frequency	LOCATION 3 = DOWN COUNT
04:	2	Loc [:UP COUNT]	MULTIPLIER = .01 FOR OUTPUT
05:	.01	Mult	IN FEET (1 FT CIRCUMFERENCE
06:	0	Offset	WHEEL,100 COUNTS/REV)
04:	P33	Z=X+Y	STAGE = STAGE + UP COUNT
01:	4	X Loc STAGE	
02:	2	Y Loc UP COUNT	
03:	4	Z Loc [:STAGE]	
05:	P35	Z=X-Y	STAGE = STAGE - DWN COUNT
01:	4	X Loc STAGE	
02:	3	Y Loc DWN COUNT	
03:	4	Z Loc [:STAGE]	
06:	P	End Table 1	

APPENDIX A. SHAFT ENCODER CONNECTIONS AND EXAMPLE PROGRAM

INPUT LOCATIONS USED:

- 1:mV LEVEL
- 2:UP COUNT
- 3:DWN COUNT
- 4:STAGE

Campbell Scientific Companies

Campbell Scientific, Inc. (CSI)

815 West 1800 North
Logan, Utah 84321
UNITED STATES
www.campbellsci.com
info@campbellsci.com

Campbell Scientific Africa Pty. Ltd. (CSAf)

PO Box 2450
Somerset West 7129
SOUTH AFRICA
www.csafrica.co.za
sales@csafrica.co.za

Campbell Scientific Australia Pty. Ltd. (CSA)

PO Box 444
Thuringowa Central
QLD 4812 AUSTRALIA
www.campbellsci.com.au
info@campbellsci.com.au

Campbell Scientific do Brazil Ltda. (CSB)

Rua Luisa Crapsi Orsi, 15 Butantã
CEP: 005543-000 São Paulo SP BRAZIL
www.campbellsci.com.br
suporte@campbellsci.com.br

Campbell Scientific Canada Corp. (CSC)

11564 - 149th Street NW
Edmonton, Alberta T5M 1W7
CANADA
www.campbellsci.ca
dataloggers@campbellsci.ca

Campbell Scientific Ltd. (CSL)

Campbell Park
80 Hathern Road
Shepshed, Loughborough LE12 9GX
UNITED KINGDOM
www.campbellsci.co.uk
sales@campbellsci.co.uk

Campbell Scientific Ltd. (France)

Miniparc du Verger - Bat. H
1, rue de Terre Neuve - Les Ulis
91967 COURTABOEUF CEDEX
FRANCE
www.campbellsci.fr
campbell.scientific@wanadoo.fr

Campbell Scientific Spain, S. L.

Psg. Font 14, local 8
08013 Barcelona
SPAIN
www.campbellsci.es
info@campbellsci.es