



## CM300, CM305, and CM310

Mounting Poles and Pedestal Kits

### Overview

Campbell Scientific offers the CM300-series mounting poles for supporting sensors, enclosures, or other instrumentation. They are an ideal mount for remote sensors such as a tipping bucket rain gauge or net radiometer. These mounting poles can be embedded directly into a concrete foundation (see illustration at top right) or used with a pedestal kit.

Individual models differ in their length:

CM300	CM305	CM310
58 cm (23 in)	119 cm (47 in)	142 cm (56 in)

### Pedestal Kits

Three pedestal kits are offered as options for the mounting poles. Alternatively, the pedestal kits may be purchased separately to support a user-supplied 1.5 in. IPS pole.

#### J-Bolt Kit

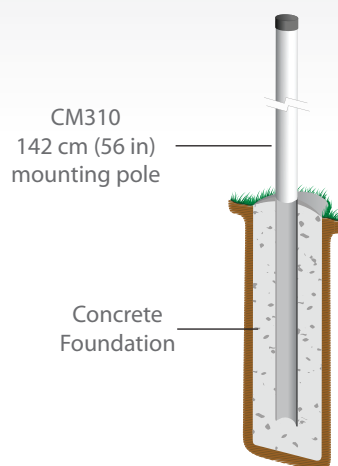
The J-Bolt Kit is for permanent installations. With this kit, customers can more easily control the pole's placement—ensuring that the pole remains in a vertical position. J-bolts are installed in a concrete foundation using the template provided with the kit. Leveling nuts allow adjustment of the pole's position. The illustration at center right shows a CM300 mounting pole fastened to a concrete foundation via the J-bolt kit.

#### Short Leg Kit

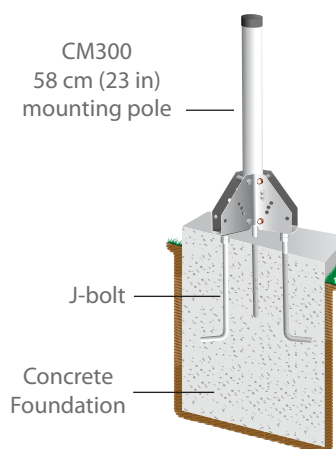
This pedestal kit is adequate for many temporary installations and for many situations where it is impractical to use a concrete foundation. The short leg kit includes three 58 cm (23 in) legs, three metal feet, and a pedestal base. The feet can be secured to the ground by using three 17049 Grounding Spikes (purchased separately).

#### Long Leg Kit

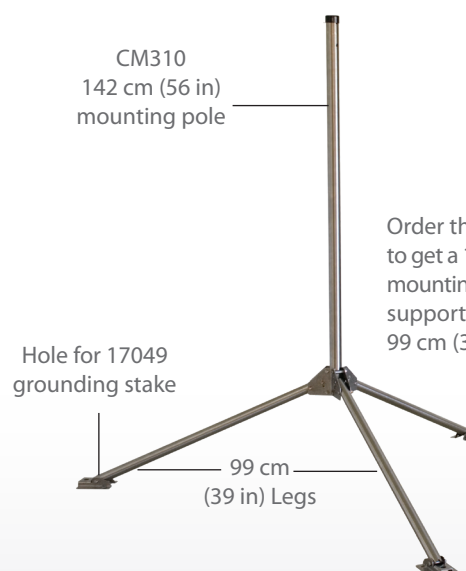
The long leg kit provides more stability for locations where the feet cannot be secured (e.g., pole sitting on a roof), for extended poles, or for areas that experience high wind speeds. This kit includes three 99 cm (39 in) legs, three metal feet, and a pedestal base. The feet can be secured to the ground by using three 17049 Grounding Spikes (purchased separately). The illustration at bottom right shows a CM310 mounting pole supported by three 99 cm (39 in) legs.



This cut away view shows a 142 cm (56 in) mounting pole placed directly in a concrete foundation. Order a CM310-NP to get a 142 cm (56 in) pole without a pedestal kit.



A cut away view shows a 58 cm (23 in) pole attached to a concrete foundation via j-bolts. Order a CM300-PJ to get a 58 cm (23 in) pole with the J-bolt pedestal kit.



Order the CM310-PL to get a 142 cm (56 in) mounting pole that is supported with three 99 cm (39 in) legs.

questions & quotes: 435.227.9120

[www.campbellsci.com/cm300](http://www.campbellsci.com/cm300)



## Ordering Information

### Mounting Poles

Choose a pedestal option for the mounting pole.

**CM300** 58 cm (23 in) Mounting Pole with Cap

**CM305** 119 cm (47 in) Mounting Pole with Cap

**CM310** 142 cm (56 in) Mounting Pole with Cap

### Pedestal Options (choose one)

- NP** No Pedestal Base. Select this if you are embedding the pole directly in a concrete foundation or supplying your own method for supporting the pole.
- PJ** J-Bolt Pedestal Kit that provides leveling capability for permanent installations.
- PS** Short Leg Kit that includes three 58 cm (23 in) legs. Feet can be secured to the ground via the 17049 Grounding Spikes.
- PL** Long Leg Kit that includes three 99 cm (39 in) legs. Feet can be secured to the ground via the 17049 Grounding Spikes.

### Pedestal Kits for User-Supplied 1.5 in. IPS Poles

**CM340** J-Bolt Pedestal Kit that provides leveling capability for permanent installations.

**CM350** Short Leg Kit that includes three 58 cm (23 in) legs. Feet can be secured to the ground via the 17049 Grounding Spikes.

**CM355** Long Leg Kit that includes three 99 cm (39 in) legs. Feet can be secured to the ground via the 17049 Grounding Spikes.

### Accessories

**17049** Grounding Spike for securing one foot of the Short Leg Kit or Long Leg Kit. Three required.

**19238** Grounding Kit used to protect the equipment by providing an earth ground.



## Specifications

### Mounting Poles

	CM300	CM305	CM310
Length	58 cm (23 in)	119 cm (47 in)	142 cm (56 in)
Weight	3.2 kg (7 lb)	6.4 kg (14 lb)	7.7 kg (17 lb)

- › Material: Stainless-steel pipe, 1.5 OD, IPS
- › Nominal Outer Diameter: 4.8 cm (1.9 in)

### J-Bolt Kit

- › Material: Stainless Steel
- › Size: 1/2-13 inch-by-12 inch

### Short Leg Pedestal Kit

- › Material: Stainless-steel tubing, 1.5 OD
- › Nominal Outer Diameter: 3.8 cm (1.5 in)
- › Leg Length: 58 cm (23 in)
- › Pedestal Height and Base Radius:

Hole Position	Pedestal Height	Radius
Top	8 cm (3 in)	69 cm (27 in)
Middle	20 cm (8 in)	64 cm (25 in)
Bottom	33 cm (13 in)	56 cm (22 in)

### Long Leg Pedestal Kit

- › Material: Stainless-steel tubing, 1.5 OD
- › Nominal Outer Diameter: 3.8 cm (1.5 in)
- › Leg Length: 99 cm (39 in)
- › Pedestal Height and Base Radius:

Hole Position	Pedestal Height	Radius
Top	13 cm (5 in)	109 cm (43 in)
Middle	38 cm (15 in)	102 cm (40 in)
Bottom	58 cm (23 in)	86 cm (34 in)