

Datalogger Support Software

LoggerNet 2.1

LoggerNet supports programming, communications, and data retrieval between Campbell Scientific dataloggers and a PC. This 32-bit software supports both array-based (CR510, CR10(X), CR23X, CR7) and table-based (CR200, CR210, CR510-TD, CR10X-TD, CR23X-TD, CR5000, CR9000) dataloggers.

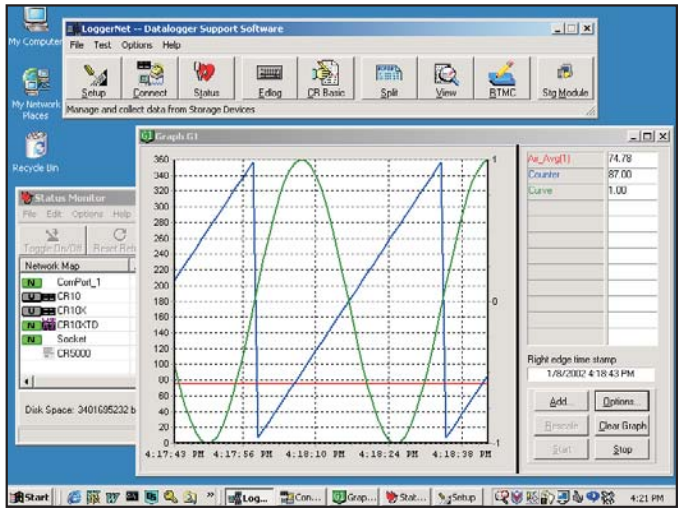
The software allows you to:

- Create custom datalogger programs
- Display or graph data
- Build a custom display screen to view data or control flags/ports
- Collect data on demand or schedule
- Retrieve data using any of our telecommunications options
- Post process data files
- Export data to third-party analysis packages
- Communicate with storage modules

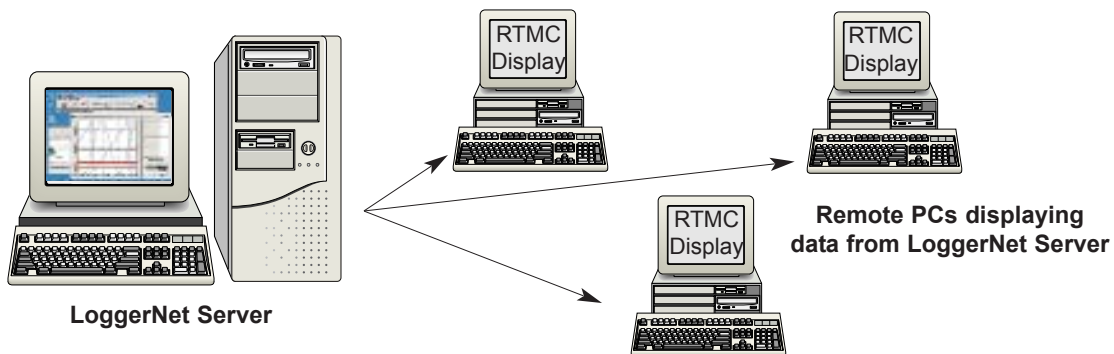
Besides supporting communications between one datalogger and a PC, LoggerNet can manage small and large datalogger networks.

Server/Client Applications

LoggerNet consists of a server application and several client applications integrated into a single product. The server application is the heart of LoggerNet communications. It runs on the main PC, using serial ports, telephony drivers, and Ethernet hardware to communicate with dataloggers via phone modems, RF devices, and other peripherals. The server stores the data in a cache and writes data to ASCII files. Client applications connect to the server to change its settings and extract data. Client applications run on the same PC as the server application, providing a "one computer feel." The RTMC (Real-Time Monitoring and Control) client can graph or display values from the server's cache. It can also run on other PCs in the same TCP/IP network, allowing remote PCs to display data from or set variables, ports, and flags for any datalogger in the network. The LoggerNet toolbar can launch clients that are used to create datalogger programs (Edlog, CRBasic Editor) or process data (Split).



LoggerNet runs from a tool bar that controls both the server and clients.



CAMPBELL SCIENTIFIC, INC.

815 W. 1800 N. • Logan, Utah 84321-1784 • (435) 753-2342 • FAX (435) 750-9540 • www.campbellsci.com

Setup, Connect, Status

These tools are used to set or change datalogger parameters, monitor



status of network communications, reset the datalogger's clock, display real-time data, send programs from the computer to the datalogger, and collect data on demand or according to a schedule. Communication links supported include TCP/IP, telephone, radio (VHF/UHF or spread spectrum), cellphone, short-haul or multi-drop modems, and direct.

Edlog and CRBasic

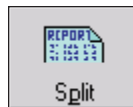
Edlog and CRBasic allow you to develop custom programs for any Campbell Scientific datalogger using select-from-



a-list and fill-in-the-blank sequences. Both Edlog and CRBasic provide extensive on-line help, support long file names, allow final storage labels to be edited, and automatically check program structure and syntax when the program is compiled. They differ in the dataloggers they support. Edlog supports the CR500, CR510, CR10(X), CR23X, CR7, CR510-TD, CR10X-TD, and CR23X-TD. CRBasic supports the CR200, CR210, CR5000, and CR9000.

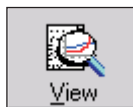
Split

Split is used to post process data files and create reports. It sorts and combines data based on time or conditions, converts between Julian dates and more conventional date/time stamps, provides simple HTML output, and allows variable column widths. You can run Split from a Task in LoggerNet or from command lines.



View

View is a handy tool for reviewing data files, especially when using a laptop in the field. You can graph up to two fields, and the graphs can be saved as BMP, WMF or EMF files. The number of points displayed on a graph can be adjusted from 100 to 5000, allowing large time spans to be seen on one screen. You can configure the left and right y-axes independently. View supports both array- and table-based data formats.



Real-Time Monitoring and Control (RTMC)

RTMC displays input locations, flags, ports, and final storage data. It provides digital, tabular, graphical, and Boolean data objects, as well as alarms. Data from multiple dataloggers can be combined on one display. Complex displays can be organized on multi-tabbed windows. RTMC includes several background graphics, or you can import your own graphics to customize your screen.



SMS

SMS allows you to retrieve all or part of the storage module's data, transfer datalogger programs to and from storage modules, and reset and test storage modules. It's compatible with our SM4M, SM16M, SM716, and SM192 storage modules, and our CSM memory cards. Limited support is provided for standard PC Cards.



Compatibility with Existing CSI Software

- Combines support for all CSI dataloggers in one software package
- Replaces PC208E and PC208W
- Provides forward compatibility of files created by 16-bit versions of Edlog, Split, View and SMS
- Converts PC208W network setups to LoggerNet network setups

Computer Requirements

The minimum recommended hardware is a 300 MHz Pentium II processor with 64 Mbytes of RAM and at least a screen resolution of 800 x 600. LoggerNet 2.1 is optimized for features in Windows NT, 2000, or XP that maximize the reliability of unattended scheduled data collection and multitasking applications programs.



CAMPBELL SCIENTIFIC, INC.

815 W. 1800 N. • Logan, Utah 84321-1784 • (435) 753-2342 • FAX (435) 750-9540
Offices also located in: Australia • Brazil • Canada • England • France • South Africa • Spain

Copyright © 2002
Campbell Scientific, Inc.
Printed December 2002