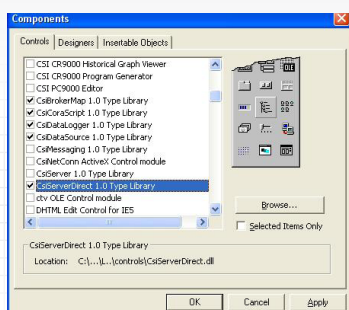


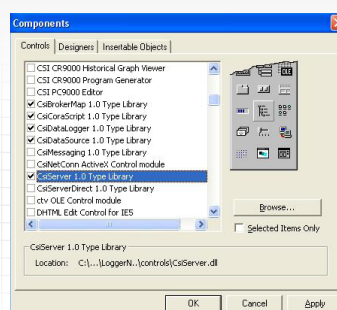


# LoggerNet-SDK, LoggerNet Server-SDK

Software Development Kits



LOGGERNET-SDK  
Component Screen



LOGGERNET Server-SDK  
Component Screen

## Overview

LoggerNet-SDK and LoggerNet Server-SDK are flexible and powerful programming tools that allow software developers to create customized applications based on Campbell Scientific's LoggerNet software package. These software development kits include several ActiveX controls (DLLs) that encapsulate fundamental tasks users want to perform with our dataloggers.

LoggerNet-SDK and LoggerNet Server-SDK differ in their communications DLL. LoggerNet-SDK includes a limited LoggerNet Server communications DLL that only allows direct RS-232 and IP port connections with a single datalogger. LoggerNet Server-SDK includes the entire LoggerNet Server communications DLL that supports datalogger networks and any of our telecommunications links.

## Specifications

### Documentation and Examples Included

- SDK Beginner's Guide
- Programmer's Reference Manual
- CoraScript Commands Reference
- Visual C++ MFC, VB.NET, and C# .NET examples for each ActiveX control with both source code and compiled executables

### Requirements

- Developer should be familiar with Campbell Scientific's hardware and software.
- The developer must create all of the clients that will start, stop, and administer the included LoggerNet Server DLL.

## ActiveX Controls/Functions Supported

### CsiBrokerMap

- Browse the datalogger network to display station and data table information

### CsiDataLogger

- Establish connection to a datalogger via the LoggerNet server
- Check/set the datalogger clock
- Transfer datalogger programs to and from the datalogger
- Toggle ports and flags
- Collect data from a datalogger
- Set input location variables

### CsiDataSource

- Retrieve data from the LoggerNet server cache

### CsiCoraScript

- Pass CoraScript commands to the LoggerNet server

### CsiLogMonitor

- Access the transaction and communications log of the LoggerNet server

### CsiServerDirect (LoggerNet-SDK only)

- Start and stop the included, limited LoggerNet server communications DLL

### CsiServer (LoggerNet Server-SDK only)

- Start and stop the included, LoggerNet Server DLL



Campbell Scientific, Inc. | 815 W 1800 N | Logan, UT 84321-1784 | (435) 227-9120 | [www.campbellsci.com](http://www.campbellsci.com)  
USA | AUSTRALIA | BRAZIL | CANADA | CHINA | COSTA RICA | FRANCE | GERMANY | SE ASIA | SOUTH AFRICA | SPAIN | UK

© 2003, 2017  
Campbell Scientific, Inc.  
January 6, 2017

questions & quotes: 435.227.9120

[www.campbellsci.com/sdk](http://www.campbellsci.com/sdk)

