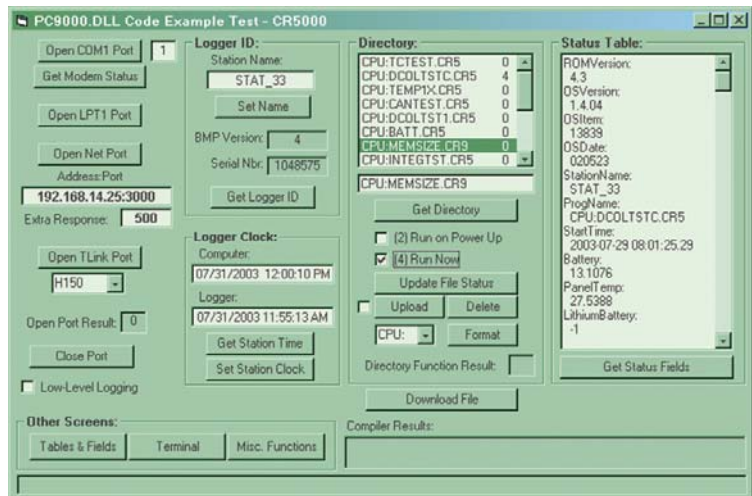


# Software Development Kit

## PC9000-SDK

PC9000-SDK allows software developers to create custom datalogger application programs using a Microsoft® Windows 32-bit programming language such as Visual Basic, Borland® Delphi, or C++. PC9000-SDK includes a call-level DLL that provides a full and varied set of datalogger control and data collection functions. The DLL has no Windows or CSI server dependencies, simplifying application deployment in most cases.

PC9000-SDK is tailored toward direct, high-speed, real-time communications between the PC and a single datalogger. It presently supports communications with CR9000(X) and CR5000 dataloggers only.



### Functions Supported

Software developers can create custom datalogger application programs that:

- Communicate through an RS-232 interface (CR5000, CR9000X only), ethernet interface (NL100, NL105, or CR9000X's onboard 10baseT/100baseT port), PLA100 Parallel Link Adapter (CR9000 only), or BLC100 Bus Link Card (CR9000 only).
- Set datalogger clock, station names, and values of public table variables
- Provide a datalogger file directory
- Start/stop programs
- Send/retrieve/delete programs and files (does not include file creation functions for CRBasic file editing or program generation)
- Query datalogger status fields, datalogger output tables, and field structures
- Collect simple, single-value data or large blocks of data
- Use MS Date/Time format for datalogger timestamps allowing simple conversions and plotting
- Optimize retrieval of large FFT/Histogram arrays
- Access low-level serial ports for modem/radio control (control strings/routines not provided)
- Provide simple return codes to indicate success or failure of function calls
- Use Basic C data types for single-threaded, no callbacks, and calling parameters. Basic C data types are "Visual Basic-safe".



**CAMPBELL SCIENTIFIC, INC.**

815 W. 1800 N. • Logan, Utah 84321-1784 • (435) 753-2342 • FAX (435) 750-9540 • [www.campbellsci.com](http://www.campbellsci.com)

---

## ***System Requirements***

- Windows 32-bit operating systems (Windows 95 SR1 and later)
- The minimum recommended hardware is a 133 MHz processor with 32 MB of RAM. Some computer operating systems and application development environments may require a faster processor and/or more RAM.

## ***Files Included***

- Redistributable binary DLL file (no run-time license fees)
- Redistributable parallel port device driver (required only for PLA100 access to the CR9000 on Windows NT/2000/XP operating systems)
- Detailed reference manual and developer license
- Example programs in Visual Basic



**CAMPBELL SCIENTIFIC, INC.**

815 W. 1800 N. • Logan, Utah 84321-1784 • (435) 753-2342 • FAX (435) 750-9540  
Offices also located in: Australia • Brazil • Canada • England • France • South Africa • Spain

Copyright © 2003, 2005  
Campbell Scientific, Inc.  
Printed January 2005