

RTMC

RTMC Development, RTMC Pro,
RTMC Run-Time, and CSI Web Server



RTMC Development

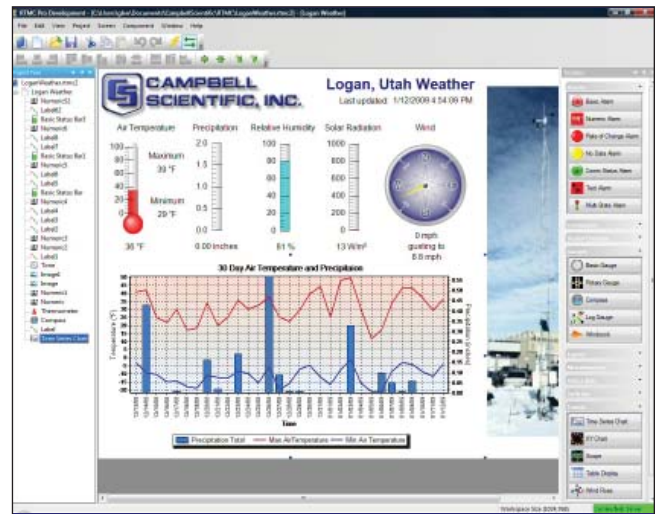
RTMC (real-time monitoring and control) allows you to create a graphical display of your datalogger data. The standard RTMC Development application and RTMC Run-Time are included with LoggerNet, LoggerNetAdmin, LoggerNetData, and RTDAQ datalogger support software.

RTMC Development provides the following tools.

- Point-and-click interface
- Alarm, slider, chart, switch, table, gauge, status bar, numeric, label, image, time, compass, thermometer, and value forwarder components

These tools allow you to create projects that when opened in RTMC Run-Time:

- Display data from any number of dataloggers in the network (RTDAQ only allows one datalogger)
- Access statistical data reported by the LoggerNet or RTDAQ server, including the current state of your datalogger network and trigger alarms based on system critical information
- Perform post processing on the data being displayed
- Allows the user to change input locations, public variable values, and toggle ports/flags
- Forward data from one datalogger to another



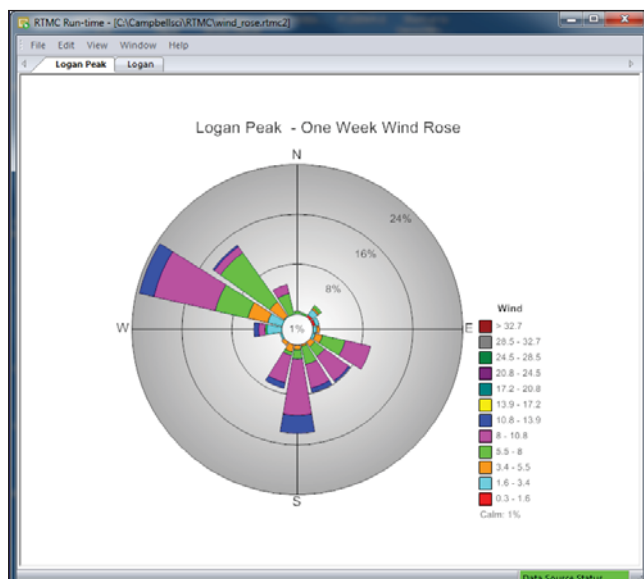
With its point-and-click interface, RTMC or RTMC Pro is a simple solution for generating real-time displays.

RTMC Pro

RTMC Pro, an enhanced version of RTMC Development, is purchased separately. It also includes RTMC Run-Time.

RTMC Pro provides many advantages over the standard RTMC Development application including:

- The ability to use LNDB databases, data files, HTTP dataloggers, virtual data sources, and multiple LoggerNet Servers as data sources
- CSI Web Server for viewing your data from a web browser (see next page)
- The ability to generate reports
- More graphical components. For example, more alarms, switches, graphs, gauges, and layout components are available
- Components to run/open a file, run a CoraScript command (LoggerNet command), or view a web page
- Images of the project that can be saved and transferred to a web server automatically
- The ability to send email messages or execute programs when alarms occur. Alarm activity can be logged to a file
- More settings for components existing in both RTMC Development and RTMC Pro, which enables more design control



Using RTMC Pro, a wind rose report can be created that displays the distribution of wind directions at various wind speeds.

Users can go to www.campbellsci.com/downloads, and receive a fully-functional 30-day trial version of RTMC Pro.

RTMC Run-Time (RTMCRT)

RTMC projects developed in RTMC Development or RTMC Pro are run using RTMC Run-Time. RTMC Run-Time is included with LoggerNet, LoggerNet-Admin, LoggerNetData, RTDAQ, and RTMC Pro. Additional RTMC Run-Time versions can be purchased separately and installed on computers that are networked to a LoggerNet computer. This allows remote PCs to display data in a graphical format from a LoggerNet server.

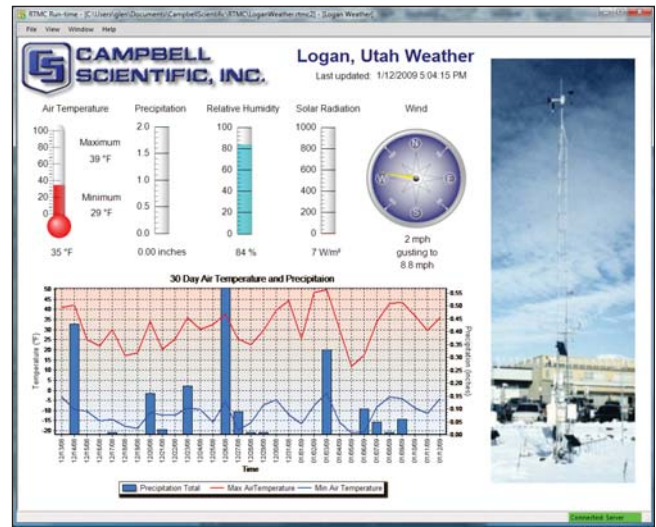
As LoggerNet collects data from the datalogger, the displays in RTMC Run-Time are automatically updated. RTMC Run-Time also allows the user to change public variable values or input locations, as well as toggle ports/flags if those capabilities were enabled in the RTMC project during development.

CSI Web Server

The CSI Web Server is included with RTMC Pro and can also be purchased separately. It allows you to view your RTMC projects using a web browser. You can also change input locations and public variable values, toggle ports/flags, and browse through historical report data from a web browser.

The CSI Web Server consists of a CSI Web Server Administrator and a Web Publisher. The CSI Web Server Administrator allows you to configure the web server, check the status of the web server, and easily browse to sites running on the web server. The Web Publisher allows you to publish your RTMC project to either a PC website using the CSI Web Server or to an HTTP enabled datalogger.

A CSI Web Server trial is included with the RTMC Pro trial version. To receive this fully-functional 30-day trial version, go to www.campbellsci.com/downloads.



The RTMC Run-Time and CSI Web Server clients run projects created in RTMC Development or RTMC Pro. RTMC Development is bundled with LoggerNet, LoggerNet Data, and RTDAQ.



CSI Web Server was used to simultaneously display data from multiple dataloggers on one web page.

Computer Requirements

All RTMC products run on Windows® XP, Windows® Vista, and Windows® 7.

RTMC Run-Time version 4.0 and CSI Web Server are optimized for using projects created with the RTMC 4.0 development tools (RTMC Development or RTMC Pro). Although RTMC Run-Time version 4.0 and CSI Web Server can use projects from version 2.5 or 3.2 development tools, the run-time display or web display may look different than what's expected. For best performance, RTMC version 4.0 development tools should be used to develop projects for RTMC Run-Time version 4.0 and CSI Web Server.