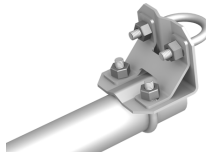


*Rugged, Reliable, and Ready for any Application***MAJOR SPECIFICATIONS****CM220** | Right-Angle Mounting Bracket

*Description*

Consists of a bracket and two 1.5-inch U-bolts.

Weight: 0.29 kg (0.65 lb)  
Dimensions: 6 x 6 x 8 cm  
(2.25 x 2.25 x 3 in)

*Compatible Sensors or Peripherals*

Sensors/peripherals with 0.75-inch-to-1-inch IPS (1-inch-to-1.5-inch OD) pipe mount, which includes:

- most wind sensors
- 52202 electric heated rain gage

*Mounts to*

- CM200-series aluminum crossarms
- CM202SS/CM204SS stainless-steel crossarms
- user-supplied 0.75-inch-to-1-inch IPS pipe (1-inch-to-1.5-inch OD)

**1049** | 0.75-inch-by-1-inch NU-RAIL Crossover Fitting

Consists of two ovoid segments oriented at a 90° angle. One segment accepts 0.75 inch IPS pipe (1.05 inch OD) and the other segment accepts 1 inch IPS pipe (1.315 inch OD)

Sensors/peripherals with 0.75 inch IPS (1.05 inch OD) pipe mount, which includes:

- 03101 anemometer
- 014A anemometer
- 27106T vertical anemometer
- 17992 GPS antenna

- CM200-series aluminum crossarms
- user-supplied 1.0 inch IPS pipe (1.32 inch OD)

**17953** | 1-inch-by-1-inch NU-RAIL Crossover Fitting

Consists of two ovoid segments oriented at a 90° angle. Both segments accept a 1 inch IPS pipe (1.315 inch OD).

Sensors/peripherals with 1.0 inch IPS (1.32 inch OD) pipe mount, which includes:

- 024A wind vane
- 034B wind sensor
- 03002 wind sensor
- all Wind Monitors

- CM200-series aluminum crossarms
- user-supplied 1.0 inch IPS pipe (1.32 inch OD)

**1017** | 0.75-inch-by-0.75 inch NU-RAIL Crossover Fitting

Consists of two ovoid segments oriented at a 90° angle. Both segments accept a 0.75 inch IPS pipe (1.05 inch OD)

Sensors/peripherals with 0.75 inch IPS (1.05 inch OD) pipe mount, which includes:

- 03101 anemometer
- 014A anemometer
- 27106T vertical anemometer
- 17992 GPS antenna

- user-supplied 0.75 inch IPS pipe (1.05 inch OD)

**CM235** | Magnetic Mounting Stand

Consists of a 9-cm-by-9-cm (3.5-inch-by-3.5-inch) platform, mounting bracket, and mounting hardware.

Weight: 0.32 kg (0.7 lb)  
Dimensions:  
8.9 x 11.4 x 6.4 cm  
(3.5 x 4.5 x 2.5 in)

Devices with a magnetic base, which includes:

- GPS 16X-HVS Geographic Position Receiver
- GPS antennas
- short-range omnidirectional antennas

U-bolt in bottom holes:

- CM200-series aluminum crossarms
- CM202SS/CM204SS stainless-steel crossarms

U-bolt in side holes:

- tripod or tower mast
- user-supplied 0.75-inch-to-1-inch IPS pipe (1-inch-to-1.5-inch OD)

**18098** | Eppley Solar Sensor or Cellular Antenna Mounting Stand

Consists of a rectangular plate, mounting bracket, and mounting hardware.

- Eppley solar sensor
- 18285 omnidirectional antenna (shipped with 18285 antenna)



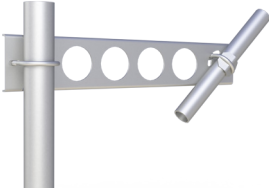
U-bolt in bottom holes:

- CM200-series aluminum crossarms
- CM202SS/CM204SS stainless-steel crossarms

U-bolt in side holes:

- tripod or tower mast
- user-supplied 0.75-inch-to-1-inch IPS pipe (1-inch-to-1.5-inch OD)



	<i>Description</i>	<i>Compatible Sensors or Peripherals</i>	<i>Mounts to</i>
<b>30626</b>   3/4 inch IPS or GPS Antenna Mounting Stand 	<p>Consist of:</p> <ul style="list-style-type: none"> <li>• Base: 14-gage cold-rolled steel, powder-coated black</li> <li>• 1.9 cm (0.75 in) IPS threaded aluminum pipe fitting and spacer</li> <li>• Stainless-steel U-bolt and washers, brass nuts</li> </ul> <p>Overall dimensions: 8.89 x 5.48 x 8.89 cm (3.5 x 2.157 x 3.5 in)</p>	<ul style="list-style-type: none"> <li>• 17992 GPS antenna</li> <li>• 30741 Iridium antenna</li> <li>• Other antennas with 3/4 inch IPS mounting threads</li> </ul>	<ul style="list-style-type: none"> <li>• CM200-series aluminum crossarms</li> <li>• CM202SS/CM204SS stainless-steel crossarms</li> <li>• user-supplied 0.75-inch-to-1-inch IPS pipe (1-inch-to-1.5-inch OD)</li> </ul>
<b>CM230</b>   Adjustable Inclination Mount 	<p>Slots allow adjustment to any angle from horizontal to vertical.</p> <p>Withstands 150 mph wind with ice.</p> <p>Weight: 0.34 kg (0.75 lb)</p> <p>Dimensions: 7.6 x 9.5 x 8.9 cm (3 x 3.75 x 3.5 in)</p>	<ul style="list-style-type: none"> <li>• Directional (Yagi) antennas</li> <li>• Sensors that are pointed at a specific target (SI-111, SR50A)</li> </ul>	<ul style="list-style-type: none"> <li>• CM200-series aluminum crossarms</li> <li>• CM202SS/CM204SS stainless-steel crossarms</li> <li>• user-supplied 0.75-inch-to-1-inch IPS pipe (1-inch-to-1.5-inch OD)</li> </ul>
<b>CM230XL</b>   Adjustable Inclination Mount, Extended Length 	<p>Slots allow adjustment to any angle from horizontal to vertical. Longer length places antenna or sensor away from mast or pole.</p> <p>Withstands 150 mph wind.</p> <p>Weight: 0.61 kg (1.35 lb)</p> <p>Width: 7.6 cm (3 in)</p> <p>Length: 47 cm (18.5 in)</p>	<ul style="list-style-type: none"> <li>• Directional (Yagi) antennas</li> <li>• Sensors that are pointed at a specific target (SI-111, SR50A)</li> </ul> <p>Sensor/antenna weight limits:</p> <ul style="list-style-type: none"> <li>• &lt;11 kg (24 lb) if attached to a mast</li> <li>• &lt;4 kg (9 lb) if attached to a crossarm and CM230XL is positioned horizontally.</li> </ul>	<ul style="list-style-type: none"> <li>• CM200-series aluminum crossarms</li> <li>• CM202SS/CM204SS stainless-steel crossarms</li> <li>• user-supplied 0.75-inch-to-1-inch IPS pipe (1-inch-to-1.5-inch OD)</li> </ul>