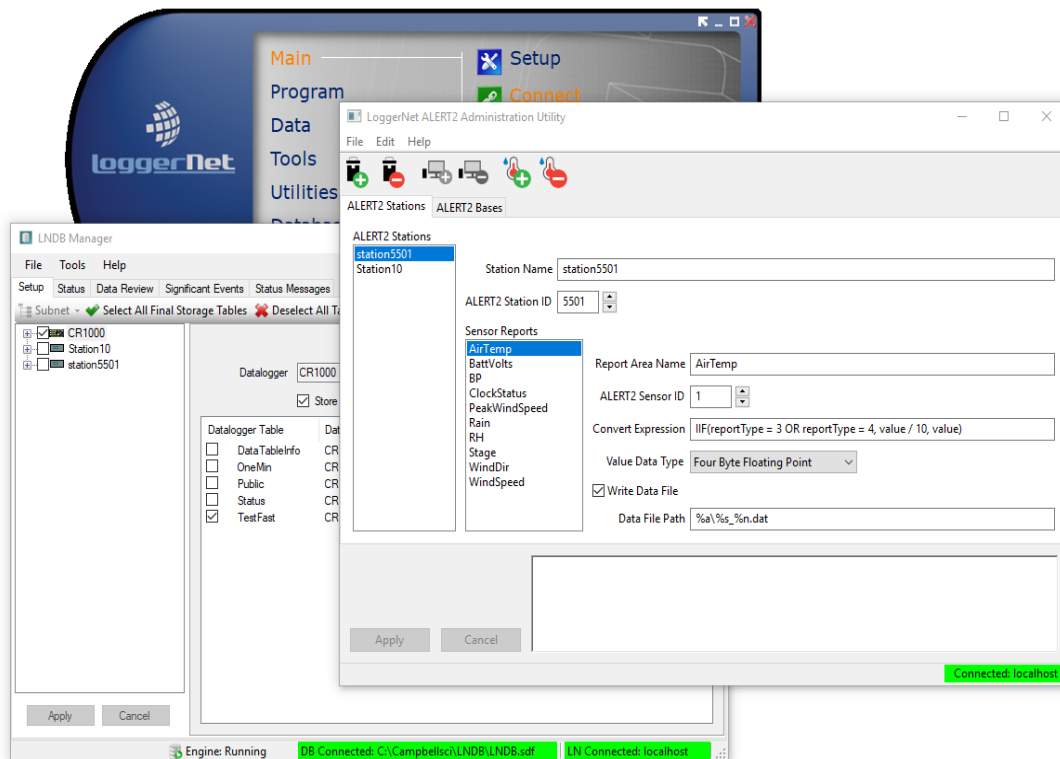




LoggerNet ALERT2

Administration Utility



License for Use

This software is protected by United States copyright law and international copyright treaty provisions. The installation and use of this software constitutes an agreement to abide by the provisions of this license agreement.

Campbell Scientific grants you a non-exclusive license to use this software in accordance with the following:

1. The purchase of this software allows you to install and use a single instance of the software on one physical computer or one virtual machine only.
2. This software cannot be loaded on a network server for the purposes of distribution or for access to the software by multiple operators. If the software can be used from any computer other than the computer on which it is installed, you must license a copy of the software for each additional computer from which the software may be accessed.
3. If this copy of the software is an upgrade from a previous version, you must possess a valid license for the earlier version of software. You may continue to use the earlier copy of software only if the upgrade copy and earlier version are installed and used on the same computer. The earlier version of software may not be installed and used on a separate computer or transferred to another party.
4. This software package is licensed as a single product. Its component parts may not be separated for use on more than one computer.
5. You may make one (1) backup copy of this software onto media similar to the original distribution, to protect your investment in the software in case of damage or loss. This backup copy can be used only to replace an unusable copy of the original installation media.

This software may not be sold, included or redistributed in any other software, or altered in any way without prior written permission from Campbell Scientific. All copyright notices and labeling must be left intact.

Limited Warranty

The following warranties are in effect for ninety (90) days from the date of shipment of the original purchase. These warranties are not extended by the installation of upgrades or patches offered free of charge.

Campbell Scientific warrants that the installation media on which the software is recorded and the documentation provided with it are free from physical defects in materials and workmanship under normal use. The warranty does not cover any installation media that has been damaged, lost, or abused. You are urged to make a backup copy (as set forth above) to protect your investment. Damaged or lost media is the sole responsibility of the licensee and will not be replaced by Campbell Scientific.

Campbell Scientific warrants that the software itself will perform substantially in accordance with the specifications set forth in the instruction manual when properly installed and used in a manner consistent with the published recommendations, including recommended system requirements. Campbell Scientific does not warrant that the software will meet licensee's requirements for use, or that the software or documentation are error free, or that the operation of the software will be uninterrupted.

Campbell Scientific will either replace or correct any software that does not perform substantially according to the specifications set forth in the instruction manual with a corrected copy of the software or corrective code. In the case of significant error in the installation media or documentation, Campbell Scientific will correct errors without charge by providing new media, addenda, or substitute pages. If Campbell Scientific is unable to replace defective media or documentation, or if it is unable to provide corrected software or corrected documentation within a reasonable time, it will either replace the software with a functionally similar program or refund the purchase price paid for the software.

All warranties of merchantability and fitness for a particular purpose are disclaimed and excluded. Campbell Scientific shall not in any case be liable for special, incidental, consequential, indirect, or other similar damages even if Campbell Scientific has been advised of the possibility of such damages. Campbell Scientific is not responsible for any costs incurred as a result of lost profits or revenue, loss of use of the software, loss of data, cost of re-creating lost data, the cost of any substitute program, telecommunication access costs, claims by any party other than licensee, or for other similar costs.

This warranty does not cover any software that has been altered or changed in any way by anyone other than Campbell Scientific. Campbell Scientific is not responsible for problems caused by computer hardware, computer operating systems, or the use of Campbell Scientific's software with non-Campbell Scientific software.

Licensee's sole and exclusive remedy is set forth in this limited warranty. Campbell Scientific's aggregate liability arising from or relating to this agreement or the software or documentation (regardless of the form of action; e.g., contract, tort, computer malpractice, fraud and/or otherwise) is limited to the purchase price paid by the licensee.

Table of Contents

1. Introduction	1
2. Requirements	1
2.1 Installing and Running LoggerNet Admin as a Service.....	1
2.1.1 Issues with Running LoggerNet as a Service.....	2
2.1.1.1 Write Access	2
Giving the LoggerNet User Write Access	2
2.1.1.2 Network Drives	3
3. QuickStart	3
3.1 Log into Server.....	3
3.2 Add Bases.....	4
3.3 Add Stations and Sensor Reports.....	5
4. Data Files and Log Files	7
5. Attributions	7

1. Introduction

LoggerNet ALERT2® Administration Utility (ALERT2 Administrator) allows for the easy ingestion of ALERT2 and ALERT concentration real-time data into the Campbell Scientific LoggerNet suite of software products. Users can easily store data for historical use. Once the stations are set up using ALERT2 Administrator, all that is required for data storage is that the LoggerNet server is running. The LoggerNet server can automatically start when the computer is turned on by running LoggerNet as a service. See "[Installing and Running LoggerNet Admin as a Service](#)" below.

Users can display data and send out alerts using RTMC projects and CSI Web Server. ALERT2 and ALERT data can also be stored in Microsoft SQL Server, Microsoft SQL Server Compact, or MySQL using LNDB.

All of this functionality allows for effective and timely decision making.

2. Requirements

ALERT2 Administrator requires that LoggerNet Admin is installed and running on the same machine or on a server that can be reached through a TCP/IP connection.

2.1 Installing and Running LoggerNet Admin as a Service

LoggerNet Admin can be run as a service. The advantage of running a software application as a service is that the software will run even when no user is logged in to the computer system. In addition, in the event of a loss of computer system power LoggerNet will resume data collection when power is restored to the computer and it "boots up".

LoggerNet Admin includes LoggerNet Service Manager, which is used to install and control LoggerNet when running as a service. The LoggerNet Service Manager is opened from the Windows Start menu (Campbell Scientific | LoggerNet Service Manager). The **LoggerNet Service Status** box at the top of the **LoggerNet Service Manager** window indicates whether or not LoggerNet is installed as a service and whether or not the service is running. When you first open

the LoggerNet Service Manager, if LoggerNet has not been installed as a service you will need to select the **Install** button. Note that LoggerNet must be closed to install it as a service. If it is opened, you will be prompted to close it before you can continue.

Once LoggerNet is installed as a service, you can use LoggerNet Service Manager to **Start** the service (or **Stop** it if it is enabled). The LoggerNet service can be uninstalled by selecting the **Uninstall** button.

The first time LoggerNet is installed as a service, a LoggerNet user account is created. The LoggerNet service is run under this LoggerNet user account. This allows the LoggerNet Service to always run in the same environment with known user rights. You will be asked to enter and confirm a password for the LoggerNet user account. The password you enter can later be used to log in to the computer as the LoggerNet user. The password can be changed by clicking the **Options** button and then clicking **Change Password**.

2.1.1 Issues with Running LoggerNet as a Service

By default, the LoggerNet service is run under the LoggerNet user account. This may cause some issues with write access and network drives. The issues, along with their solutions, are described in the following sections.

2.1.1.1 Write Access

The LoggerNet user has write access only to the CampbellSci directories. Therefore, if a task requires something to be written or done in a different directory or on the desktop, the LoggerNet user does not have sufficient access and the process will end in an error. This can be solved by giving the LoggerNet user write access to the necessary directories.

Giving the LoggerNet User Write Access

This is the process for giving the LoggerNet user write access to a designated directory in Windows 10. The process in other operating systems is similar.

1. Right-click on the directory in Windows Explorer and choose **Properties**.
2. Go to the **Security** tab of the **Properties** dialog box and select **Edit**. In the **Permissions for *directoryname*** dialog box, click **Add**. This will open the **Select Users, Computers, Service Accounts, or Groups** dialog box.
3. From the **Select Users, Computers, Service Accounts, or Groups** dialog box, click **Locations**. This will open the **Locations** dialog box.
4. In the **Locations** dialog box, select the computer name and click **OK**.
5. From the **Select Users or Groups** dialog box, click **Advanced**. Then click **Find Now**. Select **LoggerNet** in the list of names that appears at the bottom of the dialog box and click **OK**.

Note that *COMPUTER-NAME\LoggerNet* has been added to the object names on the **Select Users or Groups** dialog box. Click **OK** to close the **Select Users or Groups** dialog box.

6. The LoggerNet user should now be highlighted on the **Permissions for *directoryname*** dialog box. Select the **Full Control Allow** check box to give LoggerNet full permissions for the directory. Click **Apply** to apply the changes. Click **OK** to close the dialog box.
7. The LoggerNet user should now have full access to the designated directory.

2.1.1.2 Network Drives

Network drive mappings are associated with individual user accounts. Therefore, they cannot be used when running LoggerNet as a service. To use network drives when running LoggerNet as a service, you must use the full UNC path (e.g., *\\computer_name\directory\filename*). Note that the ability to write to the network drives will be governed by Windows security. It will be necessary to configure the LoggerNet service to run under an account that has network privileges. This requires changes to the properties of the LoggerNet service in Windows. Contact your network administrator for assistance.

3. QuickStart

3.1 Log into Server

The **Log into Server** dialog box comes up automatically the first time you run ALERT2 Administrator. It can be opened at any time from the **File | Select Server** menu item

This dialog box allows you to specify the computer running the LoggerNet server to which ALERT2 Administrator should connect. The dialog box has the following fields:

Server Address - This is the TCP/IP address of the computer running the LoggerNet server to which you are trying to connect. This must be the valid name of an existing computer or a TCP/IP address (in the form *###.###.###.###* consisting of the IP network number, *###.###.###*, and the host number, *###*). If the software server resides on the same computer as the client, you can simply type in localhost for the server name.

Note that if you have used a command line argument to change LoggerNet's default port number, you must specify this alternate port number when entering the Server address (e.g., LocalHost:6700 or 192.168.7.123:6700).

Username - Your username on the software server.

Password - Your password for the software server.

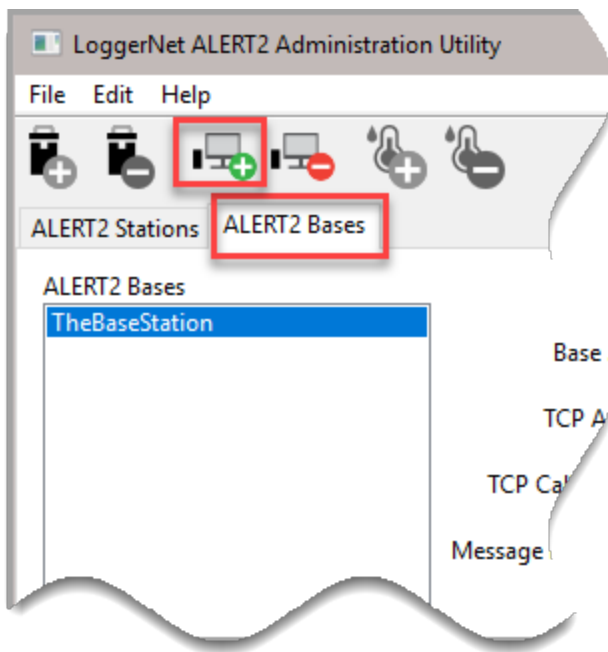
The **User Name** and **Password** fields are required only if your server administrator has set up security on your system.

Each time you start the client, you will be prompted to enter this information. However, you can save the login information by selecting the **Remember username and password** check box, or you can select the **Automatically login to this server** check box to skip this window and use the information from the last session.

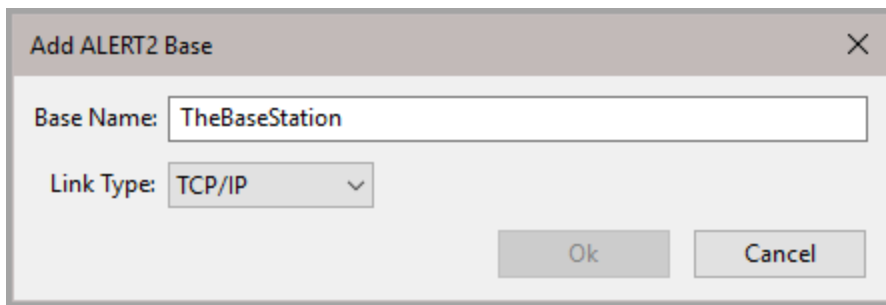
NOTE: If you are connecting to a remote LoggerNet server, the LoggerNet server must have remote connections enabled (**Tools | Options | Allow Remote Connections**) in order for ALERT2 Administrator to be able to connect to the server.

3.2 Add Bases

To add bases to your network, ensure you are on the **ALERT2 Bases** tab and click the **Add Base** button:



Enter a **Base Name** and select the communication **Link Type**: **Serial Port** or **TCP/IP**.



For a TCP/IP Base, specify:

- **TCP Address:** The domain name or IP address of the ALERT2 receiver along with the TCP port of the receiver's IND/TCP service separated from the address with a colon.
- **TCP Callback Port:** The TCP port on which LoggerNet will listen in order for the ALERT2 receiver to make in incoming TCP connection. If this value is non-zero, the link will only work for inbound connections.
- **Message Log File Size:** The maximum size, in bytes, to which LoggerNet will allow the message log file to grow before it renames and zips the file. If a value of zero is specified, received ALERT2 messages will not be written to the file.

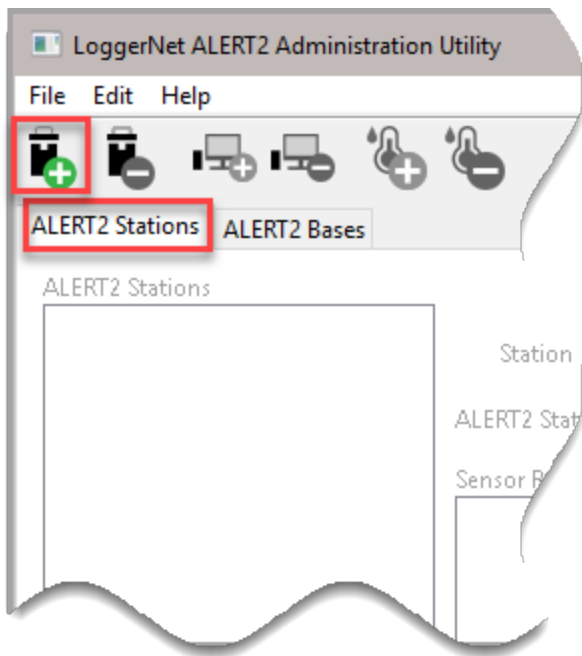
For a Serial Port Base, specify:

- **Serial Port:** The name of the serial port to which the ALERT2 receiver is attached. Clicking on the ... button will display the list of serial ports on the LoggerNet server host.
- **Baud Rate:** The baud rate used on the serial port to communicate with the ALERT2 receiver.
- **Message Log File Size:** Specify the maximum size, in bytes, to which LoggerNet will allow the message log file to grow before it renames and zips the file. If a value of zero is specified, received ALERT2 messages will not be written to the file.

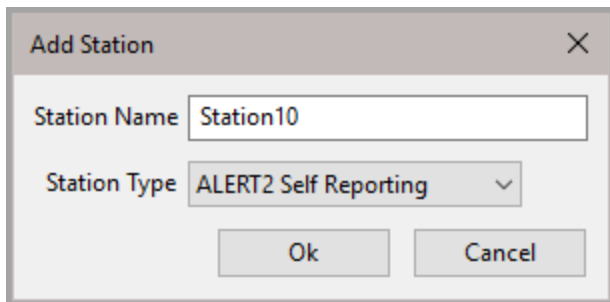
Repeat this process for all bases in the system.

3.3 Add Stations and Sensor Reports

To add stations to your network, ensure you are on the **ALERT2 Stations** tab and click the **Add Station** button:



Enter a **Station Name** and select the **StationType**: **ALERT2 Self Reporting** or **ALERT Concentration**.



Enter the **ALERT2 Station ID**.

When a station is added, it comes up with a default set of sensor reports. Additional sensor reports can be added by clicking the **Add Sensor Report** button



NOTE: When adding sensor reports, make sure the correct station is highlighted in the ALERT2 Stations list.

When adding a sensor, enter the **Report Area Name** and **ALERT2 Sensor ID**. You may also wish to enter a **Convert Expression** to convert the raw value reported by the ALERT2 sensor. See the help within the application for more information.

4. Data Files and Log Files

By default, the data files containing sensor reports are stored in:

C:\CampbellSci\LoggerNet*stationname_**sensorreportname*.dat.

Log files containing the raw messages received from each base are stored in:

C:\CampbellSci\LoggerNet\Logs*basename_*messages\$.log

5. Attributions

ALERT2 is a registered trademark of the National Hydrologic Warning Council.

Campbell Scientific Worldwide Offices

Australia

Location: Garbutt, QLD Australia
Email: info@campbellsci.com.au
Website: www.campbellsci.com.au

Brazil

Location: São Paulo, SP Brazil
Email: andread@campbellsci.com.br
Website: www.campbellsci.com.br

Canada

Location: Edmonton, AB Canada
Email: dataloggers@campbellsci.ca
Website: www.campbellsci.ca

China

Location: Beijing, P. R. China
Email: info@campbellsci.com.cn
Website: www.campbellsci.com.cn

Costa Rica

Location: San José, Costa Rica
Email: info@campbellsci.cc
Website: www.campbellsci.cc

France

Location: Antony, France
Email: info@campbellsci.fr
Website: www.campbellsci.fr

Germany

Location: Bremen, Germany
Email: info@campbellsci.de
Website: www.campbellsci.de

South Africa

Location: Stellenbosch, South Africa
Email: sales@csafrica.co.za
Website: www.campbellscientific.co.za

Southeast Asia

Location: Bangkok, Thailand
Email: info@campbellsci.asia
Website: www.campbellsci.asia

Spain

Location: Barcelona, Spain
Email: info@campbellsci.es
Website: www.campbellsci.es

UK

Location: Shepshed, Loughborough, UK
Email: sales@campbellsci.co.uk
Website: www.campbellsci.co.uk

USA

Location: Logan, UT USA
Email: info@campbellsci.com
Website: www.campbellsci.com

Please visit www.campbellsci.com/contact to obtain contact information for your local US or international representative.