



pn 31174  
3/2017



## Introduction

The quick deploy guide is a reference tool outlining the setup process. Keep this document with the CRVW3 for future reference. The CRVW3 Owner's Manual is the definitive source for detailed setup, configuration, and installation instructions.

[www.campbellsci.com/crvw3](http://www.campbellsci.com/crvw3)

## Quick Deploy Contents

- Hardware Overview
- VSPECT Overview
- Deployment Instructions:
  - Precautions
  - Software
  - Setup & Configuration
  - Sensor Connection
  - Power Options
  - Field Installation
  - Data Collection & Communications
  - Radio Network Basics
  - Maintenance

## Precautions

The CRVW3 is a rugged instrument and can provide years of service with proper care and maintenance.

- Protect the CRVW3 from over-voltage (16–28 Vdc charge input)
- Protect the CRVW3 from internal moisture (maintain desiccant)
- Protect the CRVW3 from electrostatic discharge (ground properly)

## Hardware Overview

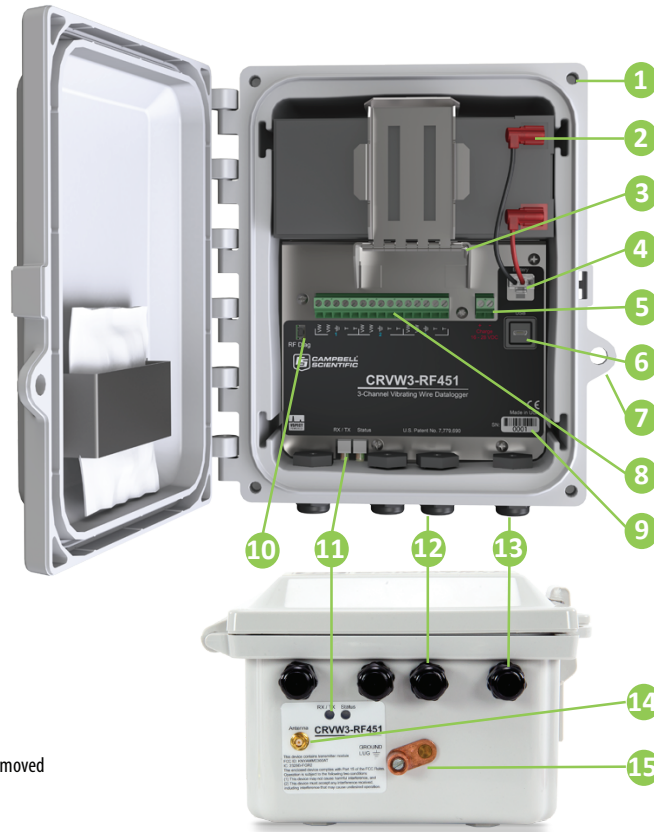
### CRVW3

- Lid screws
- Battery<sup>1</sup>
- Battery hinge pin<sup>1</sup>
- Battery connection
- Charge/solar input
- USB connection
- Enclosure lock
- CRVW3 wiring panel
- Serial number
- Radio diagnostics<sup>2</sup>
- LED indicators
- Sensor cable entry (x3)
- Charge cable entry
- Antenna connection<sup>3</sup>
- Ground lug

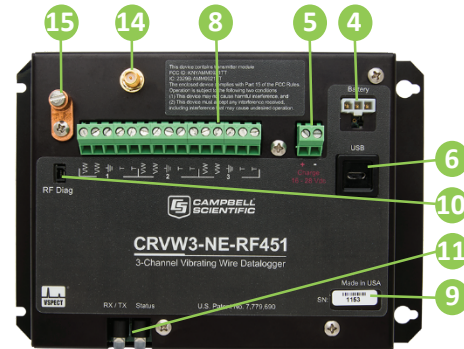
<sup>1</sup> Rechargeable battery option shown, the hinge pin can be removed and the hinge rotated to allow either battery option to fit.

<sup>2</sup> The radio diagnostic port is only for the –RF451 option

<sup>3</sup> RPSMA antenna connection



CRVW3 with enclosure



CRVW3 without enclosure (NE option)

The CRVW3 is available field ready with an enclosure and battery or as an individual component. The configuration and operation of the CRVW3 is the same for either option. The enclosure model is field ready while the non enclosure model allows the user to select an enclosure/battery for specific site requirements.

## VSPECT™ Overview



VSPECT™ provides the best vibrating wire measurement available<sup>4</sup>. Sensor frequency is easily identified while filtering out environmental and electrical noise that affects the quality of other vibrating wire readers. VSPECT™ provides measurement diagnostics to understand sensor response, installation quality, and identify incorrect wiring or damaged sensors.

### Output and Diagnostics

#### Sensor Frequency<sup>5</sup> (Hz)

Frequency is the basic measurement from a vibrating wire sensor. The frequency can be converted into engineering units (pressure, displacement, etc.) and is identified as the largest measured amplitude signal within the frequency sweep.

#### Sensor Amplitude<sup>6</sup> (mV RMS)

Signal strength from the vibrating wire sensor. Amplitude varies and is affected by the sensor type, excitation strength (adjustable), and sensor cable length.

#### Signal-to-Noise Ratio<sup>6</sup> (unitless)

The signal-to-noise ratio is calculated as sensor signal amplitude divided by the largest noise amplitude within the sweep frequency. A low signal-to-noise ratio indicates a weak sensor signal or a noisy environment.

#### Noise Frequency<sup>6</sup> (Hz)

The largest amplitude noise signal within the frequency sweep.

#### Decay Ratio<sup>6</sup> (Hz)

Signal attenuation; how quickly the signal strength decreases.

#### Thermistor/RTD Resistance<sup>5</sup> (ohms)

Used to calculate sensor temperature and correct for thermal effects<sup>7</sup>.

<sup>4</sup> Protected under U.S. Patent No. 7,779,690

<sup>5</sup> Frequency and resistance are measured values

<sup>6</sup> Diagnostic values used to describe the quality of the frequency measurement

<sup>7</sup> The temperature measurement (when present) can be used in the CRVW3, another datalogger or post processed to apply a thermal correction.

## Measurement Graphs

The following two sets of graphs illustrate the use of VSPECT™ to identify a sensor signal in a quiet and noisy environment. Both graphs were created from the same sensor using the Vibrating Wire Report created using a VWAnalyzer. Fig. 1 was measured in an electrically quiet environment, while Fig. 2 was measured in an electrically noisy environment (AC power) similar to what can be seen in a field environment (power lines, motors, radio signals, etc.). The time series on Fig. 1 shows a relatively clean signal<sup>19</sup> that is more clearly identified<sup>17</sup> on the frequency spectrum<sup>16</sup>. The time series<sup>23</sup> on Fig. 2 shows the influence of the noise<sup>24</sup>. Vibrating wire readers that only use the time series<sup>23</sup> to determine the frequency may report an incorrect frequency as a result of noise. The frequency spectrum (VSPECT™) filters the noise<sup>21</sup> and easily identifies the sensor signal<sup>22</sup>. VSPECT™ provides noise immunity by correctly identifying the sensor signal and ignoring the influence of electrical noise that plagues time-domain-based vibrating wire readers.

- The Frequency Spectrum graph shows signals with respect to frequency (VSPECT™)
- The sensor signal is determined as the largest signal within the frequency sweep
- The Time Series graph shows raw signals observed with respect to time
- A time series with minimal noise influence
- The frequency sweep is shown as the white area on the graph, only signals within the frequency sweep will be considered as a possible sensor signal

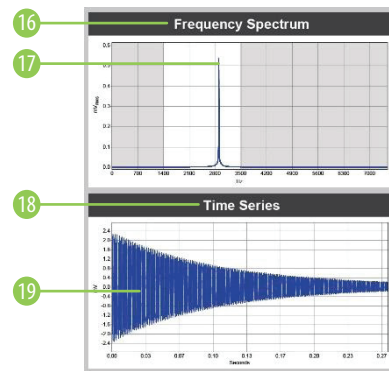


Figure 1: VW Signal

- Noise is identified and ignored
- A sensor signal is easily identified even when noise is present in the measurement
- A time series with observable noise
- Noise in the time series (this is what confuses non-VSPECT™ devices)

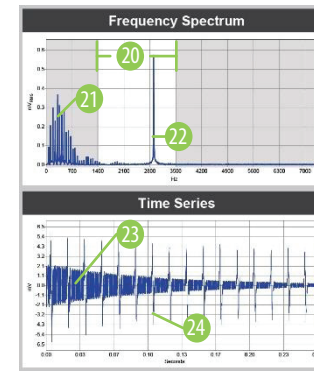
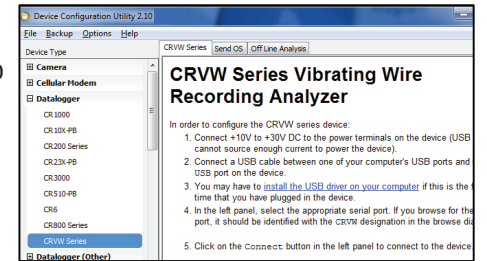


Figure 2: VW Signal With Noise

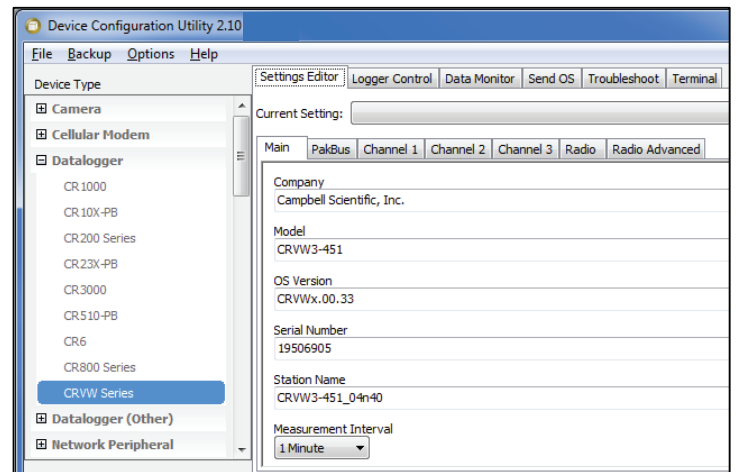
## 1 Software

- Device Configuration Utility (DevConfig) is used to setup and configure the CRVW3.
- PC200W, PC400, and LoggerNet are used to collect data (see step 6), all include DevConfig.
- USB drivers, and the steps to connect the CRVW3, are shown on the CRVW Series page of DevConfig, version 2.10 or higher is required.
- DevConfig and PC200W may be downloaded (no cost) at: [www.campbellsci.com/downloads](http://www.campbellsci.com/downloads)



## 2 Setup & Configuration

Settings in DevConfig for the CRVW3 datalogger, radio, and the channels are shown below. Additional explanations are included in DevConfig. The USB connection can power the CRVW3 during setup.




### Settings Editor

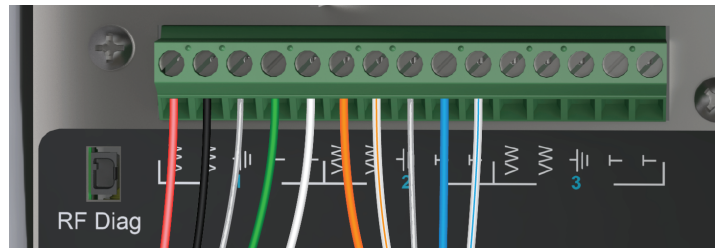
|                        |   |
|------------------------|---|
| Main                   | Measurement interval and current station OS version   |
| PakBus                 | PakBus address, security settings, and PakBus communications settings   |
| Channel Radio/Advanced | Channel configuration: frequency sweep, thermistor & calcs<br>Radio operation mode, ID, power mode, transmit strength, and RF packet settings |
| Logger Control         | Set datalogger clock  |
| Data Monitor           | Look at most recent data  |
| Send OS                | Send/update the CRVW3 OS  |
| Troubleshoot           | Test sensor response/channel. Used to verify sensor operation, wiring, or to troubleshoot (requires 12Vdc power connection).                  |
| Terminal               | Not typically used. A low level communication tool.   |

3

Sensor Connection

- Loosen and remove plug from cable entry location (bottom of enclosure)
- Insert cable from the outside
- Connect the sensor to the CRVW3 wiring panel as described in the table and illustration below
- Hand-tighten the cable entries (Do Not Over Tighten)

| Label   | Description                | Common Color Schemes |              |
|---|----------------------------|----------------------|--------------|
| VW  | First Vibrating Wire Lead  | Red                  | Orange       |
| VW  | Second Vibrating Wire Lead | Black                | Orange/White |
|  | Ground Lead                | Shield               | Shield       |
| T   | First Thermistor Lead      | Green                | Blue         |
| T   | Second Thermistor Lead     | White                | Blue/White   |



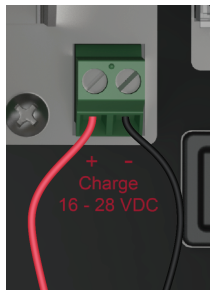
Wiring Note:

Vibrating wire leads may be wired in reverse order (black and red instead of red and black). Thermistor leads are similarly interchangeable.

4

Power Options

- Connect the battery cable (rechargeable or alkaline D-cells) to the CRVW3 wiring panel
- Connect solar panel (optional) to charge "+" & "-" (**Solar Panel Polarity Matters**)
- A 10 Watt solar panel is commonly used, however a 5 or 20 Watt may also be used depending on site-specific communications and location



| LED Indicators |              |  |
|----------------|--------------|--|
| Wireless RX/TX | Flash red    | Radio transmit                                 |
|                | Flash green  | Radio receive                                  |
|                | Solid red    | Radio error                                    |
|                | Solid orange | Busy (configuring)                             |
|                | Off          | No communications                              |
| Status         | Solid green  | Measurement                                    |
|                | Flash green  | "Awake" mode, USB, recently configured         |
|                | Solid orange | Busy (configuring, or can't communicate)       |
|                | Solid red    | Measurement/program error                      |
|                | Flash red    | USB power insufficient for measurements        |
|                | Off          | Device is asleep, waiting for next measurement |

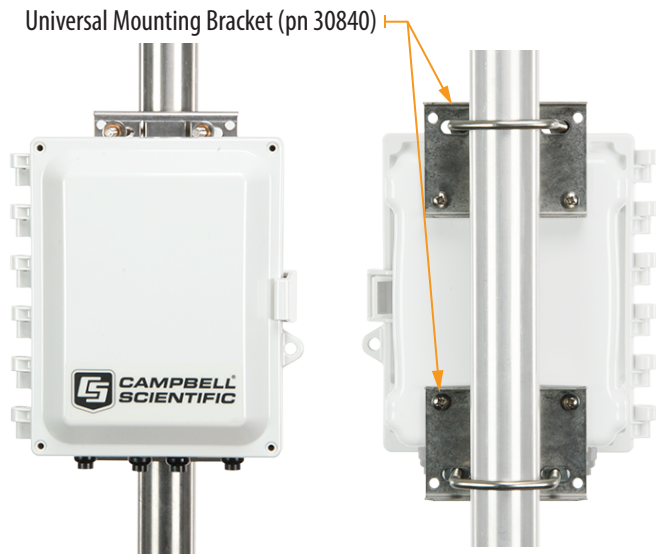
Regulator/Solar Panel Note:

- The rechargeable battery will be charged by the CRVW3 when used with a solar panel (proper installation, solar conditions).

5

Field Installation

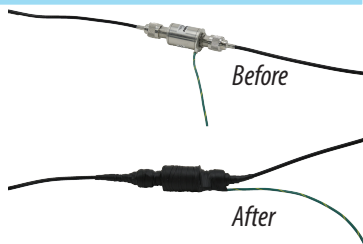
| Enclosure Mounting  | Use the supplied standard mounting kit or the Universal Mounting Bracket (pn 30840, shown below) to secure the CRVW3 enclosure.  |
|---------------------|--|
| Grounding           | Connect the ground lug to earth ground. A small enclosure grounding kit (pn 31163) is available for grounding into soil.   |
| Moisture Protection | Ensure the lid is securely closed, cable entry points are tightened, and desiccant packs are installed. Orient the enclosure to minimize water entry (typically with cable entries facing downward). |



| Antenna Options         | A small antenna may be connected directly to the enclosure. For longer distance communications, a higher gain or directional antenna with an exterior cable may be necessary. A surge suppressor kit (pn 31312) is recommended when using cabled antennas.  |
|-------------------------|---|
| Radios                  | Radios can only communicate with similar radios. For example, a CRVW3-RF407 can only communicate with other devices that have a built-in -RF407 radio option, or are connected to a stand-alone RF407 radio. The only exception to this rule is the CRVW3-RF451, which can communicate with other devices that have a built-in -RF451 radio option, or are connected to a stand-alone RF451 or RF450. |
| Verify Sensor Operation | Sensor operation should be validated prior to leaving the site by using the Data Monitor or Troubleshoot tab in <i>DevConfig</i> .  |

Installation Note:

Protect environmentally exposed antenna connections with self-vulcanizing tape (pn 21212) as shown to the right.

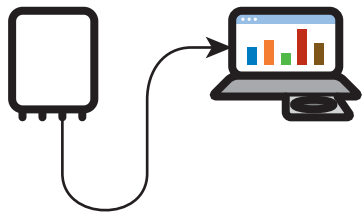


6

Data Collection & Communications

PC200W, PC400, or LoggerNet Software:

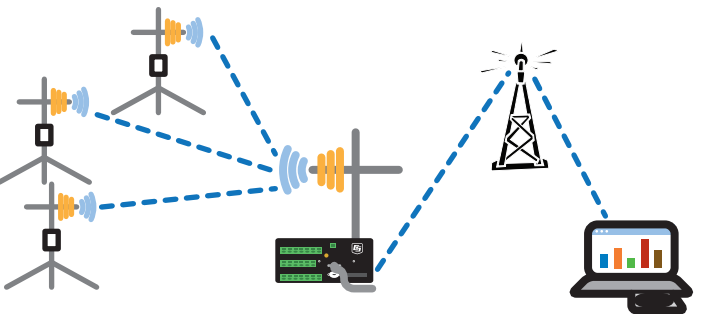
- Create a station in the software for the CRVW3 based on specific communication requirements (direct connect, radio, multiple stations, etc.)
- Collect data from the station
- Radio & Automated collections require LoggerNet



| USB Direct Connection | <ul style="list-style-type: none"><li>Requires USB cable (included)</li><li>Supported by all three software packages</li><li>Data can be collected with the CRVW3 powered by USB/PC power</li></ul> |
|-----------------------|---|
|-----------------------|---|



| Simple Radio Connection | <ul style="list-style-type: none"><li>Good for stations within radio frequency (RF) range of the PC/radio</li><li>Field testing with a laptop and radio</li></ul> |
|-------------------------|---|
|-------------------------|---|



| Advanced Communications | <ul style="list-style-type: none"><li>Can utilize one network offsite connection; cell phone, satellite, or other IP connection.</li><li>A centralized datalogger collects site data into a single device</li><li>Multiple CRVW3 dataloggers connect to a centralized datalogger</li></ul> |
|-------------------------|--|
|-------------------------|--|

Communications Note:

A more thorough discussion on connection methods and advanced communications is found in the CRVW3 Manual.

7

Radio Network Basics

- DevConfig* is used to setup/configure individual settings. *Network Planner* (*LoggerNet*) may be used to setup complete networks, or to see the settings that *LoggerNet* would assign (Pakbus addresses, router settings, etc.).
- Select appropriate antennas based on site conditions.
- Successful communications will be aided by:
  - line-of-site between stations
  - raised antenna locations
- Make sure radio settings match (see table below)

| RF451 Settings   | RF407, RF412, RF422, and RF427 Settings  |
|--|--|
| <ul style="list-style-type: none"><li>Only one master radio</li><li>Subnet and Network IDs</li></ul> | <ul style="list-style-type: none"><li>Protocol, power mode, and retry levels</li><li>RF Network and Hop Sequence</li></ul> |

8

Maintenance

Routine maintenance is the best standard of practice to promote a functioning system. Here are some maintenance recommendations; some sites may have more specific maintenance requirements.

| Moisture Protection | <ul style="list-style-type: none"><li>Minimize moisture intrusion inside the enclosure</li><li>Replace desiccant (pn 6714) and humidity indicator card (pn 28878) as needed</li><li>Check cable entry points for a good seal</li><li>Wipe moisture off lid gasket prior to opening (reduce water ingress)</li></ul> |
|---------------------|---|
| Grounding           | <ul style="list-style-type: none"><li>Check grounding rod, grounding cable, and connections</li><li>Inspect for loose connections</li></ul>   |
| Solar Panel         | <ul style="list-style-type: none"><li>Clean solar panel with mild detergent and a clean cloth</li><li>Remove any solar barriers (fallen debris, overhead branches, leaves, etc.)</li></ul>  |
| Data Collection     | <ul style="list-style-type: none"><li>Data should be collected at regular intervals</li></ul>   |