

# INSTRUCTION MANUAL



## **DMM600 Duff Moisture Meter**

Revision: 11/12



Copyright © 2002 - 2012  
Campbell Scientific, Inc.



# Warranty

---

“PRODUCTS MANUFACTURED BY CAMPBELL SCIENTIFIC, INC. are warranted by Campbell Scientific, Inc. (“Campbell”) to be free from defects in materials and workmanship under normal use and service for twelve (12) months from date of shipment unless otherwise specified in the corresponding Campbell pricelist or product manual. Products not manufactured, but that are re-sold by Campbell, are warranted only to the limits extended by the original manufacturer. Batteries, fine-wire thermocouples, desiccant, and other consumables have no warranty. Campbell's obligation under this warranty is limited to repairing or replacing (at Campbell's option) defective products, which shall be the sole and exclusive remedy under this warranty. The customer shall assume all costs of removing, reinstalling, and shipping defective products to Campbell. Campbell will return such products by surface carrier prepaid within the continental United States of America. To all other locations, Campbell will return such products best way CIP (Port of Entry) INCOTERM® 2010, prepaid. This warranty shall not apply to any products which have been subjected to modification, misuse, neglect, improper service, accidents of nature, or shipping damage. This warranty is in lieu of all other warranties, expressed or implied. The warranty for installation services performed by Campbell such as programming to customer specifications, electrical connections to products manufactured by Campbell, and product specific training, is part of Campbell's product warranty. CAMPBELL EXPRESSLY DISCLAIMS AND EXCLUDES ANY IMPLIED WARRANTIES OF MERCHANTABILITY OR FITNESS FOR A PARTICULAR PURPOSE. Campbell is not liable for any special, indirect, incidental, and/or consequential damages.”

# Assistance

---

Products may not be returned without prior authorization. The following contact information is for US and international customers residing in countries served by Campbell Scientific, Inc. directly. Affiliate companies handle repairs for customers within their territories. Please visit [www.campbellsci.com](http://www.campbellsci.com) to determine which Campbell Scientific company serves your country.

To obtain a Returned Materials Authorization (RMA), contact CAMPBELL SCIENTIFIC, INC., phone (435) 227-9000. After an applications engineer determines the nature of the problem, an RMA number will be issued. Please write this number clearly on the outside of the shipping container. Campbell Scientific's shipping address is:

**CAMPBELL SCIENTIFIC, INC.**

RMA# \_\_\_\_\_  
815 West 1800 North  
Logan, Utah 84321-1784

For all returns, the customer must fill out a "Statement of Product Cleanliness and Decontamination" form and comply with the requirements specified in it. The form is available from our web site at [www.campbellsci.com/repair](http://www.campbellsci.com/repair). A completed form must be either emailed to [repair@campbellsci.com](mailto:repair@campbellsci.com) or faxed to (435) 227-9106. Campbell Scientific is unable to process any returns until we receive this form. If the form is not received within three days of product receipt or is incomplete, the product will be returned to the customer at the customer's expense. Campbell Scientific reserves the right to refuse service on products that were exposed to contaminants that may cause health or safety concerns for our employees.

# Table of Contents

---

*PDF viewers: These page numbers refer to the printed version of this document. Use the PDF reader bookmarks tab for links to specific sections.*

<b>1. Overview .....</b>	<b>1</b>
<b>2. Cautionary Statements.....</b>	<b>1</b>
<b>3. Initial Inspection .....</b>	<b>1</b>
3.1 DMM600 Packing List.....	1
<b>4. Quickstart .....</b>	<b>2</b>
<b>5. Overview.....</b>	<b>6</b>
<b>6. Specifications .....</b>	<b>7</b>
6.1 Physical .....	7
6.2 Power .....	7
6.3 Performance .....	8
<b>7. Operation.....</b>	<b>8</b>
7.1 Sample Chamber .....	8
7.2 Electronics.....	8
7.3 Display End.....	8
7.3.1 Power Switch .....	8
7.3.2 Audible Indicator .....	8
7.3.3 Display .....	9
7.3.4 Serial Port.....	9
7.4 Water Content Measurement.....	9
7.4.1 Gravimetric and Volumetric Water Content .....	9
7.4.1.1 Determining Duff Sample Bulk Density .....	11
7.4.2 Duff Size and Water Content Heterogeneity.....	11
7.5 PCDMM Software .....	11
7.5.1 Introduction.....	11
7.5.2 Calibration Equation .....	12
7.5.3 Description of PCDMM Functions .....	12
7.5.3.1 Menus.....	12
7.5.3.2 Indicators.....	13
7.5.3.3 Command Buttons.....	13
7.6 Calibration.....	13
7.6.1 DMM600 Standard Calibration.....	13
7.6.2 User Calibration .....	14
7.6.2.1 Equipment Required for User Calibration.....	14
7.6.2.2 Calibration Procedure.....	14

7.7	Drying Samples and Calculating Volumetric Water Content.....	16
7.7.1	Conventional Oven Method .....	16
7.7.2	Microwave Oven Method.....	16

## **8. Maintenance .....17**

8.1	Changing the 9-Volt Battery.....	17
8.2	Cleaning the Sample Chamber .....	17

## **Figures**

3-1.	Ships with equipment .....	2
4-1.	DMM600 components.....	3
4-2.	Duff placed in sieve.....	4
4-3.	Duff placed in chamber .....	4
4-4.	Turn knob to make measurement .....	5
4-5.	Bottom of DMM600.....	6
7-1.	Downloading coefficients to convert to gravimetric water content...	10
7-2.	PCDMM user interface display .....	12
7-3.	DMM600 standard calibration.....	14

# ***DMM600 Duff Moisture Meter***

---

## **1. Overview**

The DMM600 Duff Moisture Meter is the product of collaboration between Campbell Scientific and USDA-Forest Service, Rocky Mountain Research Station, and Missoula Technology and Development Center. This portable, battery-powered duff meter accurately measures moisture content in duff material, which is critical to those conducting scheduled burns as well as those attempting to battle out-of-control fires. The DMM600 is a stand-alone device (a datalogger is not required). A sieve, carrying case, and software are included.

Before installing the DMM600, please study

- Section 2, *Cautionary Statements*
- Section 3, *Initial Inspection*
- Section 4, *Quickstart*

## **2. Cautionary Statements**

The DMM600 is a precision instrument. Please handle it with care.

## **3. Initial Inspection**

Upon receipt of the DMM600, inspect the packaging and contents for damage. File damage claims with the shipping company. Immediately check package contents against the shipping documentation; the packing list is provided in Section 3.1, *DMM600 Packing List*. Contact Campbell Scientific about any discrepancies.

### **3.1 DMM600 Packing List**

The following are included with the DMM600; also see FIGURE 3-1:

1. 15601 padded carrying case.
2. 15749 sieve case.
3. CD containing (a) video instruction, (b) PCDDMM software, (c) DMM600 operating manual, and (d) a sample Excel spreadsheet for calibrations.
4. 7.5 cm (3 in) diameter #4 sieve.
5. 10873 6 foot, 9-pin female-to-9-pin male serial cable to connect the DMM600 to a PC.
6. Phillips screwdriver.
7. Spare 9 Vdc alkaline battery.



FIGURE 3-1. Ships with equipment

## 4. Quickstart

This section describes the process for getting a water content measurement. Information about the sensor components, using the software, and calibrating the sensor is located in Section 7, *Operation*.

1. Unscrew the compression knob completely and loosen (don't remove) the chamber access thumbscrew. Remove the sample chamber cap by turning slightly counter-clockwise and lifting (see FIGURE 4-1).





FIGURE 4-1. DMM600 components

2. Place duff in the sieve and place the sieve atop the sample chamber (see FIGURE 4-2 and FIGURE 4-3).



*FIGURE 4-2. Duff placed in sieve*



*FIGURE 4-3. Duff placed in chamber*

3. Finger-work the duff in the sieve until it moves through the sieve and into the sample chamber. The sieve may need to be filled more than once to fill the chamber. The sample should fill the sample chamber to about the beginning of the bevel on the top edge. Don't overfill the chamber or the compression piston may bind.
4. Remove the sieve. Ensure that the compression knob is fully out and replace the sample chamber cap by aligning the slots of the cap with the pins of the sample chamber. Turn the cap slightly clockwise and tighten the chamber access thumbscrew.
5. Flip the toggle switch on the bottom of the DMM600. Turn the compression knob clockwise until the double-beep audible signal indicates the measurement has been made (see FIGURE 4-4 and FIGURE 4-5).



*FIGURE 4-4. Turn knob to make measurement*



6. View the volumetric water content from the display at the bottom of the DMM600 (see FIGURE 4-5). If user calibrations are loaded, the display will toggle between factory and user values. Water content is only displayed while the sample is compressed.

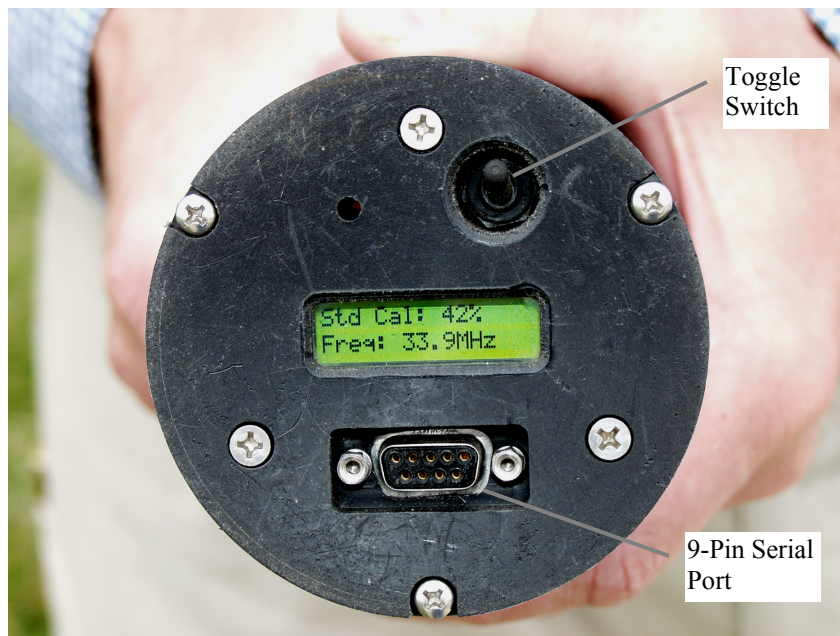


FIGURE 4-5. Bottom of DMM600

7. Turn the knob counter-clockwise to stop. A single beep indicates the sample is no longer compressed and the measured water content value is no longer displayed. Loosen the thumbscrew, and remove the sample chamber cap. Remove the sample from the sample chamber. If residual water is apparent on the sample chamber surfaces, wipe dry.

## 5. Overview

The DMM600 measures volumetric water content of organic forest floor material. It is a portable, battery-powered device that uses measurement methods that are sensitive to the dielectric permittivity of the material being measured. The dielectric permittivity is strongly dependent on the water content of the forest floor material.

The forest floor can contain several kinds of organic material including a litter layer, the recognizable plant debris that has not decomposed; the fermentation layer, partially decomposed litter often bound with fungus; and the humus layer, extensively decomposed unrecognizable organic material. Duff is an inclusive term that refers to the fermentation and humus layers. Duff thickness and duff water content strongly influence duff consumption and soil heating during fires.

The parts of the DMM600 include a cylinder that houses the electronics, a sample chamber, and an LCD readout. To measure duff water content, the

sample is placed in the sample chamber, the lid is attached, and the sample is compressed to a density determined by precision springs. When proper density is reached, an audible indicator sounds and the result is displayed on the readout. Readings are displayed in real time. There is no memory for measurement storage.

A standard calibration converts the output of the measurement circuit to volumetric water content. Alternatively, a user-defined calibration can be downloaded using PC software PCDMM which is supplied with the DMM600. When user-defined calibrations are used, measurements derived from the standard calibration and the user-defined calibration are alternately displayed on the LCD.

PCDMM is software supplied with the DMM600 and provides an interface using serial communications. PCDMM allows downloading and uploading of calibration coefficients, checking battery voltage and resetting the DMM600.

The DMM600 comes with a 7.5 cm (3 inch) diameter sieve, and a case for easy carrying and storage for small items including a spare battery, screwdriver and pencil.

## 6. Specifications

### Features:

- Measures duff water content in the field
- Compact and easy to carry
- Simple to use

### 6.1 Physical

<b>Dimensions:</b>	8.9 cm (3.5 in) diameter, 25.4 cm (10 in) length
<b>Weight:</b>	1.7 kg (3.7 lb)
<b>Sieve description:</b>	#4, mesh = 0.187 in

### 6.2 Power

<b>Power supply:</b>	9 Vdc alkaline battery. Battery should be replaced when voltage is $\leq 7$ volts. Battery voltage is checked using PCDMM software supplied with DMM600. The DMM600 automatically turns off after 5 minutes of inactivity.
----------------------	--

<b>Current demand between measurements:</b>	approximately 3 mA
---	--------------------

<b>Sleep mode current:</b>	140 $\mu$ A
----------------------------	-------------

<b>Measurement current:</b>	85 mA for approximately 1 ms
-----------------------------	------------------------------

<b>Measurements per battery:</b>	more than 2000
----------------------------------	----------------

## 6.3 Performance

<b>Accuracy:</b>	$\pm 5\%$ full scale range
<b>Resolution:</b>	1% volumetric water content

## 7. Operation

The DMM600 is cylindrically shaped with a sample chamber on one end and a display on the other. Electronics for the water content measurement and serial communications with a PC are housed in the central part of the cylinder.

### 7.1 Sample Chamber

The sample chamber holds the sample during measurement. The sample chamber is accessed by loosening the chamber access thumbscrew, rotating the sample chamber cap slightly counter-clockwise and lifting the cap away from the sample chamber.

A piston located inside the cap is attached to the compression knob by a threaded shaft. With the sample in the sample chamber, the compression knob is turned to compress the sample for measurement. The knob is also used to relax the sample for removal.

The bottom of the sample chamber is a printed circuit board containing a waveguide attached to piston. A high frequency signal is coupled to the waveguide from the electronics in the main cylinder. The presence of water in the sample determines the response of the circuit which is converted to water content using a calibration equation. The waveguide is attached to a piston which moves against precision springs to obtain correct compression of sample.

### 7.2 Electronics

The electronics for the measurement are located below the sample chamber. The electronics for display and serial communications are located behind the display.

### 7.3 Display End

#### 7.3.1 Power Switch

A toggle switch that turns the DMM600 on and off is on the bottom of the DMM600 next to the display. When the switch is toggled on, a single beep indicates the DMM600 is turned on. To conserve battery power, the DMM600 will automatically turn off after about 5 minutes of inactivity. If the DMM600 is in the power-saving mode, toggling the power switch or compressing the sample will restore the measurement mode.

#### 7.3.2 Audible Indicator

The audible indicator uses a port to the side of the power switch.

### 7.3.3 Display

A two-line, 16-character LCD provides measurement results. When the DMM600 is initially turned on, the display shows:

DMM600

Compress sample

The following is displayed after the sample is compressed and measured.

Std Cal: xx%

Freq: xx.xMHz

The water content measurement using the standard calibration is listed next to **StdCal**. The frequency from the measurement circuit is listed next to **Freq**.

If a user-defined calibration is loaded in the DMM600, the following will also be displayed:

name Cal: xx%

Freq: xx.xMHz

Where **name** is the name entered for the user-defined calibration as specified in the PCDMM software. The display will alternate every 3 seconds between the standard and user-defined calibration.

### 7.3.4 Serial Port

The DMM600 serial port is used for direct connection to the serial port of a computer using a 9-pin serial cable. The port should be kept covered with the plastic cover to protect from damage when not being used. PCDMM is the interface software.

## 7.4 Water Content Measurement

### 7.4.1 Gravimetric and Volumetric Water Content

The DMM600 is sensitive to water content on a volume basis, i.e. volumetric water content. Volumetric water content is the volume of water in a given volume of material. Gravimetric water content is a weight-basis parameter and is the ratio of the mass of water to the mass of the material with no water. Volumetric and gravimetric water content are related by the bulk density of the material. Multiplying gravimetric water content by material bulk density yields volumetric water content.

The choice of water content description, whether gravimetric or volumetric, is largely traditional in different professions. It is important to understand the difference and how to convert between them.

The DMM600 presents water content measurement results in volumetric terms because that is what the DMM600 measures. Conversion to gravimetric requires knowledge of the material bulk density. Bulk density of duff tends to be similar for many forest types. If the bulk density of a particular material is known or measured, the displayed volumetric water content value is easily converted to gravimetric by adjusting the calibration coefficients.

As an example, consider that the bulk density of a lodgepole pine was determined to be  $0.25 \text{ g/cm}^3$ . The calibration equation to convert circuit output frequency to volumetric water content is

$$\text{Volumetric Water Content} = 5.288 + 5.905 * \text{freq} - 0.142 * \text{freq}^2$$

To convert to gravimetric water content, each calibration equation coefficient is divided by the bulk density. Applying for this example gives

$$\text{Gravimetric Water Content} = 21.152 + 23.620 * \text{freq} - 0.568 * \text{freq}^2$$

#### NOTE

This is not a general calibration equation but an example.

PCDMM can be used to load the modified calibration equation (see FIGURE 7-1). When downloaded, the DMM600 will alternately display volumetric water content using standard calibration and gravimetric water content using the modified equation.

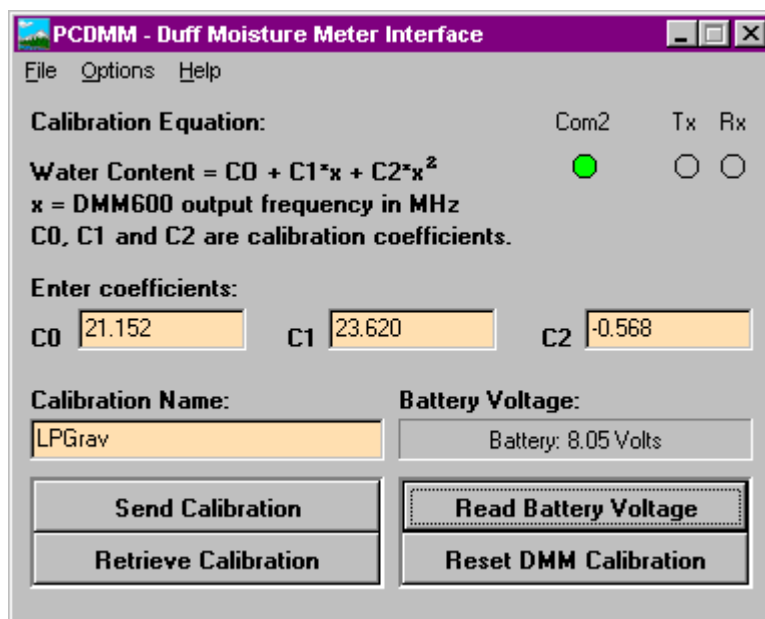


FIGURE 7-1. Downloading coefficients to convert to gravimetric water content



#### 7.4.1.1 Determining Duff Sample Bulk Density

The bulk density of the sample at time of measurement is determined as follows.

1. After the measurement is made, count the number of compression knob *rotations* required to move compression piston from measurement position to completely out.
2. Use following equation to calculate volume of sample at time of measurement.

$$\text{Volume} = 157.97 - 7.25 * \text{rotations}$$

3. Dry then weigh the sample used for the measurement.
4. The bulk density in  $\text{g/cm}^3$  is the dry weight divided by the volume.

#### 7.4.2 Duff Size and Water Content Heterogeneity

There is considerable variability in both the physical characteristic and water content distribution in duff. Because this variability can be significant over a small area or even within a handful-sized sample, several measurements of the material are needed to obtain reliable estimates of the water content for the area of interest.

Duff commonly varies in fragment size, and it may be necessary to grind or chop the material to improve measurement accuracy and repeatability. A #4 sieve is included with the DMM600 for this purpose. Forcing the sample material through the sieve will improve measurement accuracy and repeatability.

The heterogeneity of material size can be characterized by making repeated measurements of the same material. Place the duff in the sample chamber and make a measurement. Remove the duff from the chamber and restore its natural structure by working it by hand. Put the duff back in the sample chamber and make another measurement. Repeat this process several times. If the measurements vary by more than about 5% water content, this indicates that the material should be sieved before measuring to reduce the effect of the fragment size variation.

### 7.5 PCDMM Software

#### 7.5.1 Introduction

PCDMM is PC software used to download user defined calibrations, retrieve calibration coefficients from DMM600, reset DMM600 and monitor battery voltage.

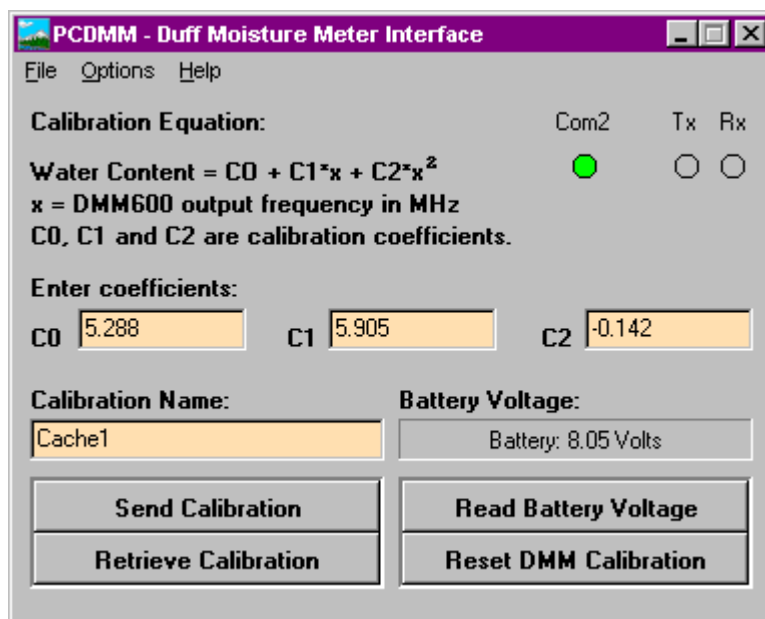


FIGURE 7-2. PCDMM user interface display

## 7.5.2 Calibration Equation

The frequency output of the DMM600 is converted to water content using a calibration equation. The response of the DMM600 to changing water content is best described with a quadratic calibration equation. A factory calibration is part of the DMM600 operating system and will always be displayed.

The factory calibration to convert frequency (MHz) to volumetric water content is:

$$\text{Volumetric Water Content} = 5.288 + 5.905 * \text{freq} - 0.142 * \text{freq}^2$$

User derived calibrations are easily loaded to the DMM600 using PCDMM. The coefficients from the calibrations are entered into the appropriate box then *Send Calibration* button is used to transfer the values to the DMM600.

## 7.5.3 Description of PCDMM Functions

This information is also available from the HELP menu.

### 7.5.3.1 Menus

Options/Comx selects computer serial communications port x.

Options/Disconnect terminates serial communications.

Options/Exit terminates program PCDMM.

### 7.5.3.2 Indicators

Three circles provide serial communications information.

The left circle indicates which serial communications port is selected. The circle is green when the connection is successfully made.

The TX circle is green during transmission from the computer to the DMM600. The RX circle is red during transmission from the DMM600 to the computer.

### 7.5.3.3 Command Buttons

*Send Calibration Coefficients* sends calibration name (maximum of 4 characters) and the user-specified calibration coefficients to the DMM600.

*Receive Calibration Coefficients* receives and displays calibration name and calibration coefficients from DMM600.

*Read Battery Voltage* reads voltage of 9 volt battery in DMM600 and displays value.

*Reset DMM600 calibration* removes any user-defined calibration and sets calibration to factory default.

## 7.6 Calibration

### 7.6.1 DMM600 Standard Calibration

FIGURE 7-3 shows the response of the DMM600 as described using the standard calibration that was derived by Campbell Scientific using duff from lodgepole pine, spruce, Douglas fir, larch and oak vegetation types. The error bars indicate that the measurement accuracy decreases as water content increases. The accuracy is approximately  $\pm 4.0\%$  at 60% volumetric water content and approximately  $\pm 1.5\%$  at 30% volumetric water content. Measurements on materials that are highly heterogeneous in fragment size will provide less accurate results.

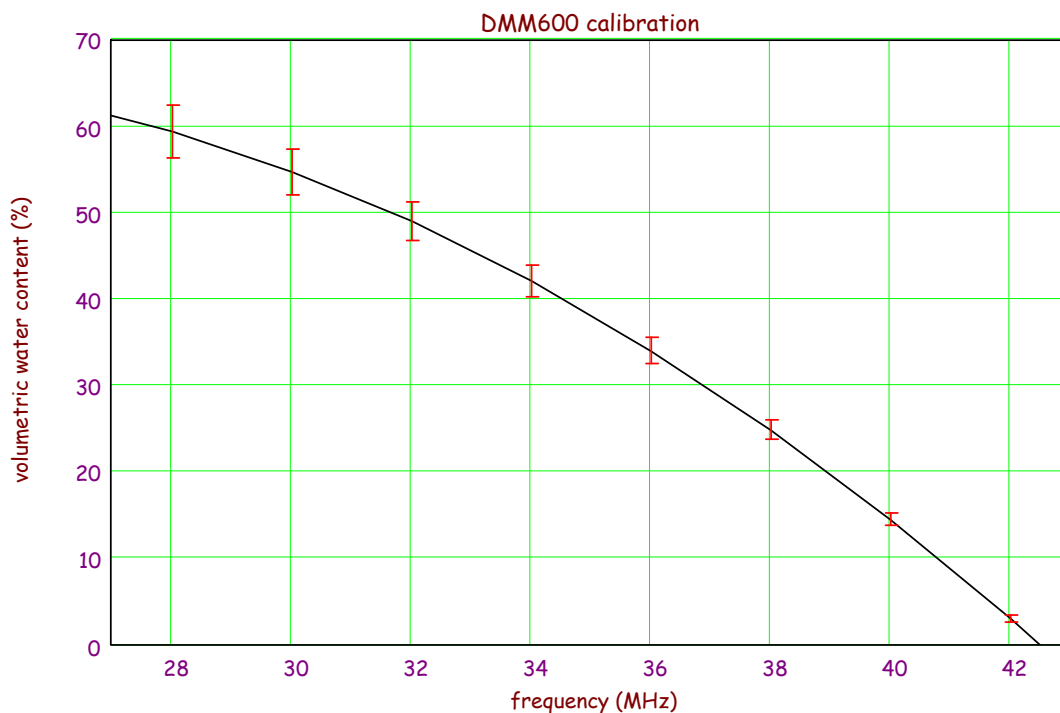


FIGURE 7-3. DMM600 standard calibration

## 7.6.2 User Calibration

### 7.6.2.1 Equipment Required for User Calibration

- plastic bags to store samples
- a scale to measure sample weight
- containers to hold samples for weighing and while drying in oven
- a drying oven or microwave to dry samples

### 7.6.2.2 Calibration Procedure

The calibration requires duff samples with a range of water contents. The collected sample will be measured with the DMM600, removed from the DMM600 and weighed, then dried and weighed. Water will be added to the samples to obtain samples with a range of water contents, and the measurement process repeated on the wetted samples.

Spreadsheet file *DMM600 calibration spreadsheet.xls* is provided with the DMM600 to assist with calibration calculations.

1. Collect a sample of the material to be used in the calibration that is four to five times the volume of the sample chamber. Sample chamber volume is approximately 140 cm<sup>3</sup>. Place the material in a plastic bag that can be sealed to prevent drying and let the sample set for 8 to 12 hours. This

sitting time will allow the water content to equilibrate throughout the sample.

2. Load a portion of the sample into the chamber and take a measurement. See Section 7.4.2, *Duff Size and Water Content Heterogeneity*, for discussion of sample heterogeneity. Record the frequency in MHz that is displayed as “Raw”.
3. Unscrew the compression knob counting the number of turns from the position of measurement to fully out. Use the index on the compression knob and the radial lines on the sample chamber cap for this. Record the number of turns.
4. Remove the material from the sample chamber to a container of known weight. Weigh the sample and container. Repeat steps 2 and 3 at least three times using different portions of the sample.
5. Dry the samples and then weigh. See Section 7.7, *Drying Samples and Calculating Volumetric Water Content*, for guidance on drying samples.
6. Using the dried samples repeat steps 2 through 4. The dried sample measurements are zero water content values.
7. Use the following equation to calculate volume of sample at time of measurement.

$$Volume = 157.97 - 7.25 * rotations$$

8. Calculate the bulk density (g/cm<sup>3</sup>) by dividing the dry weight of the sample by the volume.
9. Estimate the amount of water to add to the dry samples to obtain 50% volumetric water content using the following equation.

$$wet\ sample\ weight = dry\ sample\ weight * \left( \frac{50}{100 * bulk\ density} + 1 \right)$$

The value 50 is the target volumetric water content.

10. Place the sample(s) in sealable plastic bag(s) and add water. Work water into sample. Set aside for 8 hours to allow equilibration.
11. Repeat steps 2 through 8.
12. Repeat steps 9 through 11 for other target volumetric water contents to provide a range of calibration water contents.
13. Derive the calibration equation using polynomial curve fitting such as the trendline function of Microsoft Excel.

## 7.7 Drying Samples and Calculating Volumetric Water Content

### 7.7.1 Conventional Oven Method

For this method a thermostatically controlled oven is required and sample containers suitable for oven temperature of 105°C.

#### Procedure

1. Weigh and record the weight of sample container
2. Place the sample in the container and record the weight of the container and sample.
3. Place the container with sample in the drying oven and dry at 105°C for 12 to 16 hours or until the sample weight does not decrease with drying time.
4. Remove sample from oven, and allow the material and container to cool to room temperature. Determine and record the weight of the dried sample and the container using the same balance.

Calculation of gravimetric water content of the sample using spreadsheet or as follows:

$$\text{water content} = \left( \frac{\text{mass of container and wet sample} - \text{mass of container and dry sample}}{\text{mass of container and dry sample} - \text{mass of container}} \right) * 100$$

Multiply gravimetric water content by bulk density to obtain volumetric water content.

### 7.7.2 Microwave Oven Method

For this method a microwave oven is required and sample containers suitable for use in microwave oven.

#### Procedure

1. Weigh and record the weight of sample container.
2. Place the sample in the container and record the weight of the container and sample.
3. Place the container with sample in the microwave oven with the heat sink and turn the oven on for 3 min. The heat sink can be a cup of water covered with a paper towel. The heat sink absorbs microwave energy once the sample is dry.
4. After the set time has elapsed, remove the container from the oven. Allow to cool so that it can be handled and then weight the sample and record the weight.
5. Carefully stir the sample, taking special precautions not to lose any.

6. Return the container with the sample to the oven, and reheat for 1 min.
7. Repeat steps 4 through 6, until the weight does not change.
8. Use the final weight determination in calculating the gravimetric water content.

Calculation of gravimetric water content of the sample using spreadsheet or as follows:

$$\text{water content} = \left( \frac{\text{mass of container and wet sample} - \text{mass of container and dry sample}}{\text{mass of container and dry sample} - \text{mass of container}} \right) * 100$$

Multiply gravimetric water content by bulk density to obtain volumetric water content.

## 8. Maintenance

### 8.1 Changing the 9-Volt Battery

The 9-volt battery is installed behind the display. To replace the battery, remove the three outer screw from the display end cap and slide out of the main cylinder. A screwdriver or small coin can be inserted into small slots on the edge of the cylinder to assist separation.

### 8.2 Cleaning the Sample Chamber

The sample chamber can be removed for cleaning by removing the chamber removal thumbscrew and rotating the sample chamber slightly counter-clockwise.







## **Campbell Scientific Companies**

---

### **Campbell Scientific, Inc. (CSI)**

815 West 1800 North

Logan, Utah 84321

UNITED STATES

[www.campbellsci.com](http://www.campbellsci.com) • [info@campbellsci.com](mailto:info@campbellsci.com)

### **Campbell Scientific Africa Pty. Ltd. (CSAf)**

PO Box 2450

Somerset West 7129

SOUTH AFRICA

[www.csafrica.co.za](http://www.csafrica.co.za) • [cleroux@csafrica.co.za](mailto:cleroux@csafrica.co.za)

### **Campbell Scientific Australia Pty. Ltd. (CSA)**

PO Box 8108

Garbutt Post Shop QLD 4814

AUSTRALIA

[www.campbellsci.com.au](http://www.campbellsci.com.au) • [info@campbellsci.com.au](mailto:info@campbellsci.com.au)

### **Campbell Scientific do Brazil Ltda. (CSB)**

Rua Luisa Crapsi Orsi, 15 Butantã

CEP: 005543-000 São Paulo SP BRAZIL

[www.campbellsci.com.br](http://www.campbellsci.com.br) • [suporte@campbellsci.com.br](mailto:suporte@campbellsci.com.br)

### **Campbell Scientific Canada Corp. (CSC)**

11564 - 149th Street NW

Edmonton, Alberta T5M 1W7

CANADA

[www.campbellsci.ca](http://www.campbellsci.ca) • [dataloggers@campbellsci.ca](mailto:dataloggers@campbellsci.ca)

### **Campbell Scientific Centro Caribe S.A. (CSCC)**

300 N Cementerio, Edificio Breller

Santo Domingo, Heredia 40305

COSTA RICA

[www.campbellsci.cc](http://www.campbellsci.cc) • [info@campbellsci.cc](mailto:info@campbellsci.cc)

### **Campbell Scientific Ltd. (CSL)**

Campbell Park

80 Hathern Road

Shepshed, Loughborough LE12 9GX

UNITED KINGDOM

[www.campbellsci.co.uk](http://www.campbellsci.co.uk) • [sales@campbellsci.co.uk](mailto:sales@campbellsci.co.uk)

### **Campbell Scientific Ltd. (France)**

3 Avenue de la Division Leclerc

92160 ANTONY

FRANCE

[www.campbellsci.fr](http://www.campbellsci.fr) • [info@campbellsci.fr](mailto:info@campbellsci.fr)

### **Campbell Scientific Spain, S. L.**

Avda. Pompeu Fabra 7-9, local 1

08024 Barcelona

SPAIN

[www.campbellsci.es](http://www.campbellsci.es) • [info@campbellsci.es](mailto:info@campbellsci.es)

*Please visit [www.campbellsci.com](http://www.campbellsci.com) to obtain contact information for your local US or international representative.*