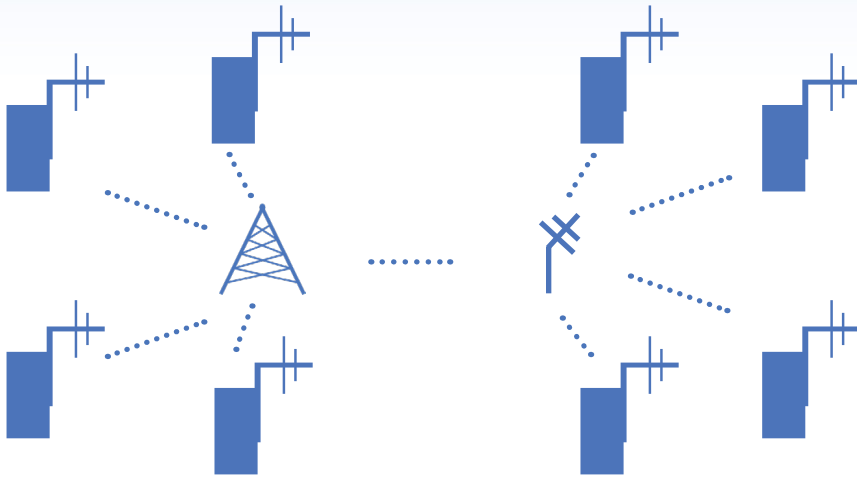


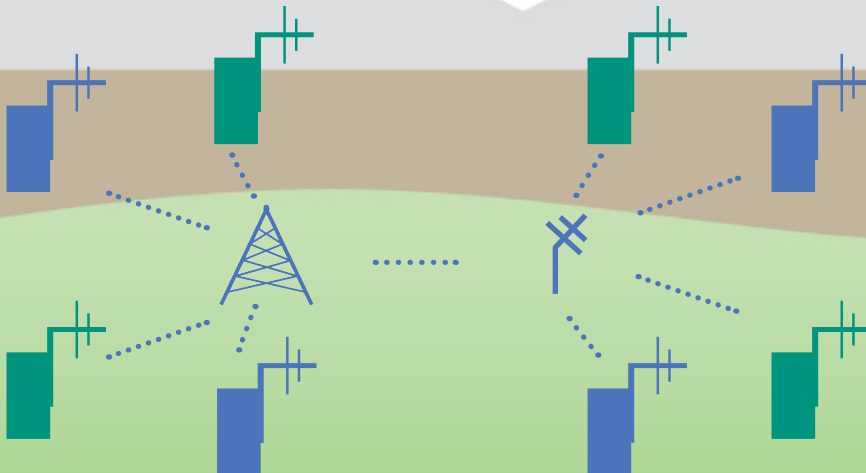
1 Existing ALERT (Legacy) Network

This is what a typical existing flood warning network looks like.












2 ALERT (Legacy) with Option to Upgrade

Our upgradeable field stations can seamlessly fit into your existing network with an easy drop-in replacement system.

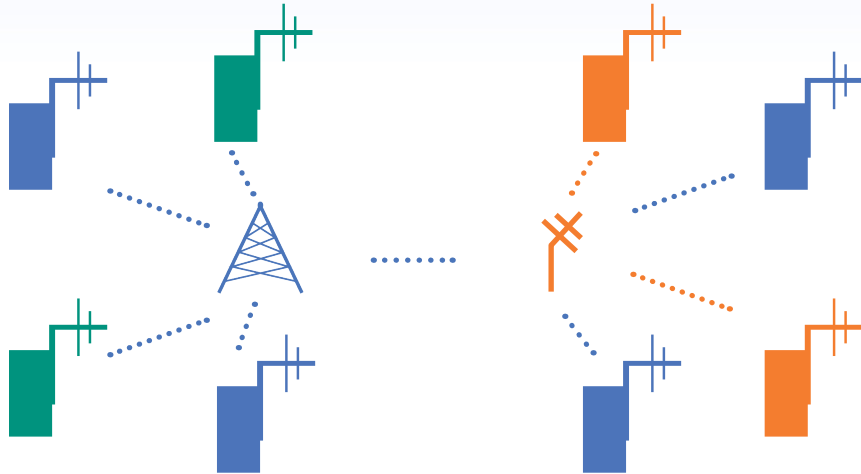


KEY

-  ALERT Field Station
-  ALERT Base Station
-  ALERT Repeater
-  ALERT Path
-  ALERT Field Station (Upgradeable)
-  ALERT2™ Field Station
-  ALERT2™ Base Station
-  ALERT2™ Repeater
-  ALERT2™ Path

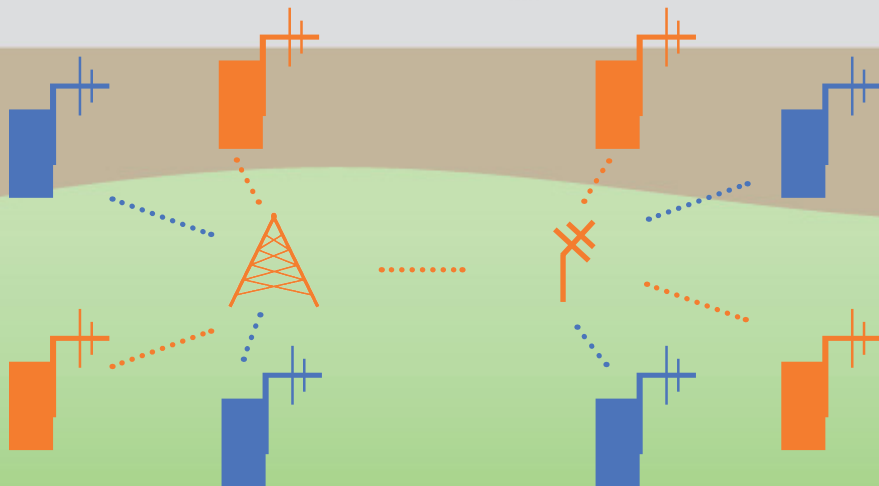
3 Transitioning to ALERT2™

The first stages of transitioning to ALERT2™ is to upgrade the Base station. The Base can still receive ALERT (legacy) and upgradeable field stations that transmit to the base can now utilize ALERT2™.












4 ALERT2™ System

Moving to the second phase of transitioning to ALERT2™ you can upgrade the Repeater. The Repeater can now transmit to the Base using ALERT2™. The Base and Repeater can still receive ALERT (legacy) however all upgradeable field stations can now utilize ALERT2™.



KEY

-  ALERT Field Station
-  ALERT Base Station
-  ALERT Repeater
-  ALERT Path
-  ALERT Field Station (Upgradeable)
-  ALERT2™ Field Station
-  ALERT2™ Base Station
-  ALERT2™ Repeater
-  ALERT2™ Path