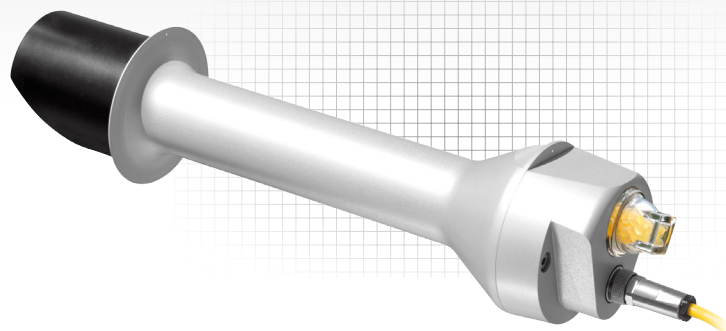




## CHP1 Pyrheliometer



### Overview

The CHP1\* pyrhiometer provides unattended direct solar-radiation measurements. It is designed specifically to monitor the direct beam solar irradiance with a field of view limited to 5 degrees. This is

achieved by the shape of the collimation tube, by precision apertures, and by the detector design.

### Technical Description

To monitor direct normal irradiance, a CHP1 Pyrhiometer is mounted to a user-supplied sun tracker such as Kipp & Zonen's Solys2. The CHP1 pyrhiometer measures the direct-beam solar irradiance with a field of view limited to 5 degrees. The limited field of view requires

the CHP1 to be continuously pointed toward the sun. The Solys2 Sun Tracker rotates on two axes and uses a GPS receiver to keep the CHP1 aimed at the sun throughout the day.

### Ordering Information

#### Pyrhiometer

**CHP1-L** Kipp & Zonen Pyrhiometer with user-specified cable length. Enter cable length, in feet, after the -L. Must choose a cable termination option.

#### Cable Termination Options (choose one)

- PT** Cable terminates in stripped and tinned leads for direct connection to a datalogger's terminals.
- PW** Cable terminates in a connector for attachment to a prewired enclosure.

### Specifications

- › Spectral Range: 200 to 4000 nm
- › Sensitivity: 7 to 14  $\mu\text{V}/\text{W}/\text{m}^2$
- › Response Time: < 5 s
- › Zero Offset B: < 1  $\text{W}/\text{m}^2$
- › Temperature Dependence of Sensitivity (-20° to +50°C): < 0.5 %
- › Field of View: 5°  $\pm 0.2^\circ$
- › Operating Temperature: -40° to +80°C
- › Non-linearity: < 0.2%
- › Maximum Solar Irradiance: 4000  $\text{W}/\text{m}^2$
- › International Standards: First Class ISO
- › Weight (excluding cable): 0.9 kg
- › Length: 31.6 cm (12.4 in)
- › Body Diameter: 3.8 cm (1.5 in)
- › Base Diameter: 7.6 cm (3.0 in)

\*The CHP1 is manufactured by Kipp and Zonen, and then cabled by Campbell Scientific.



Campbell Scientific, Inc. | 815 W 1800 N | Logan, UT 84321-1784 | (435) 227-9000 | [www.campbellsci.com](http://www.campbellsci.com)  
USA | AUSTRALIA | BRAZIL | CANADA | CHINA | COSTA RICA | ENGLAND | FRANCE | GERMANY | SOUTH AFRICA | SPAIN

© 2013  
Campbell Scientific, Inc.  
August 15, 2013

More info: 435.227.9000

[www.campbellsci.com/chp1-l](http://www.campbellsci.com/chp1-l)

