

APPLICATION NOTE



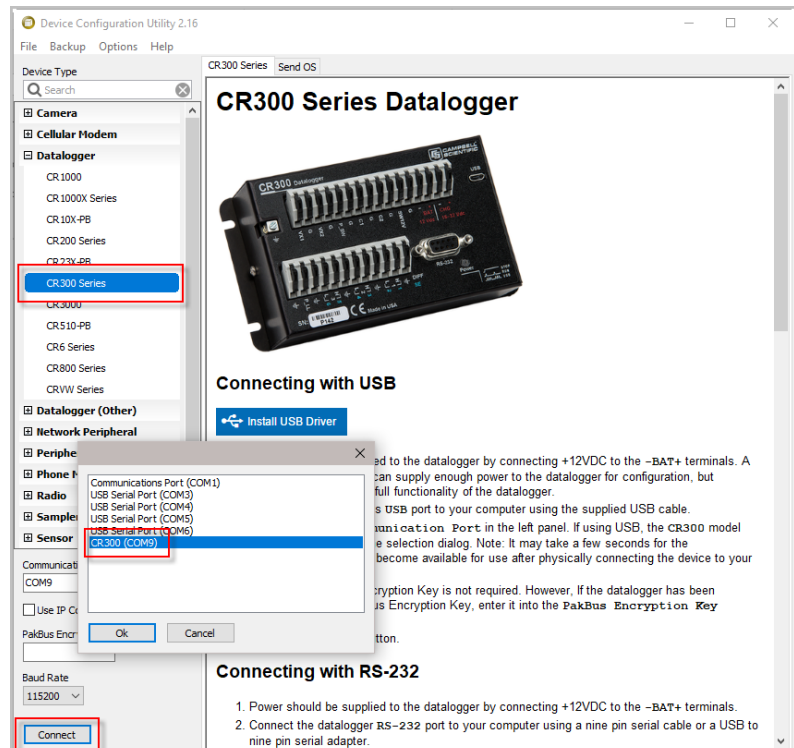
**CR300-Series-WiFi Daughter
Board OS Update Procedure
to Resolve the KRACK
Vulnerability**

12/17

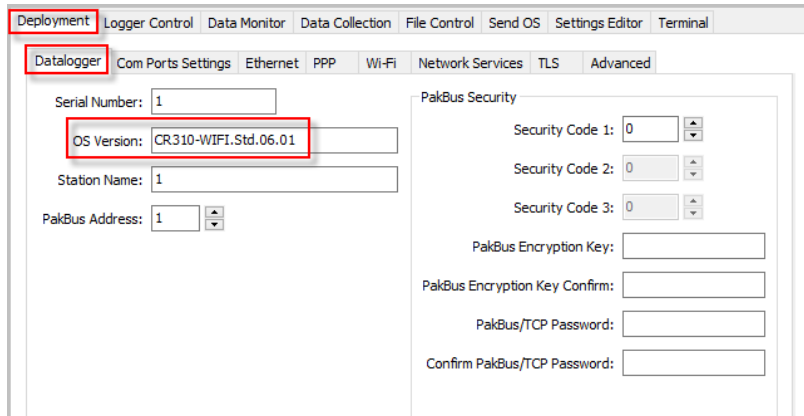
CR300-Series-WiFi Daughter Board OS Update Procedure to Resolve the KRACK Vulnerability

This procedure updates the CR300-series-WiFi daughter board OS to version 1.6.9.1 to resolve the KRACK vulnerability.

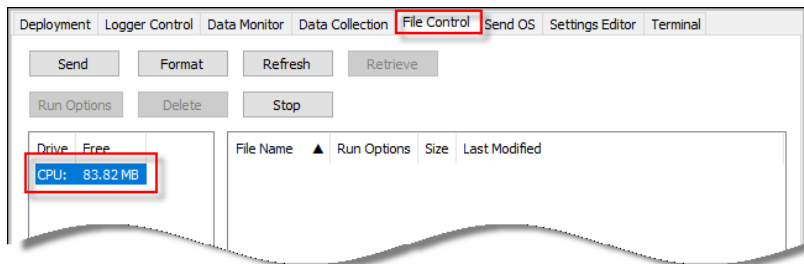
1. Download the executable, CR3XX_Wifi_OS_Update_1.6.9.1.exe, from our website at www.campbellsci.com/downloads.
2. Run the executable file.
3. Apply power to the CR300 series. (A USB connection supplies 5 V power, but is not sufficient to power the WiFi module which must be powered to complete this procedure.)
4. If not using WiFi, connect your communication cable to the CR300 series.
5. Open *Device Configuration Utility (DevConfig)*.
6. Under **Device Type**, select **CR300 Series**.
7. Select the correct **Communication Port**. (If using WiFi, select the **Use IP Connection** checkbox and browse to or enter the IP address.)
8. Click **Connect**.



- As a precaution, backup the CR300-series datalogger using the wizard accessed from the **Backup | Back Up Datalogger...** command (see www.campbellsci.com/blog/update-datalogger-operating-system).
- Verify that you are running CR300 series version 06.01 or later operating system. You can see this information in the **Deployment | Datalogger** tab in *DevConfig*. If you are running an earlier operating system, update the operating system (see www.campbellsci.com/blog/update-datalogger-operating-system).

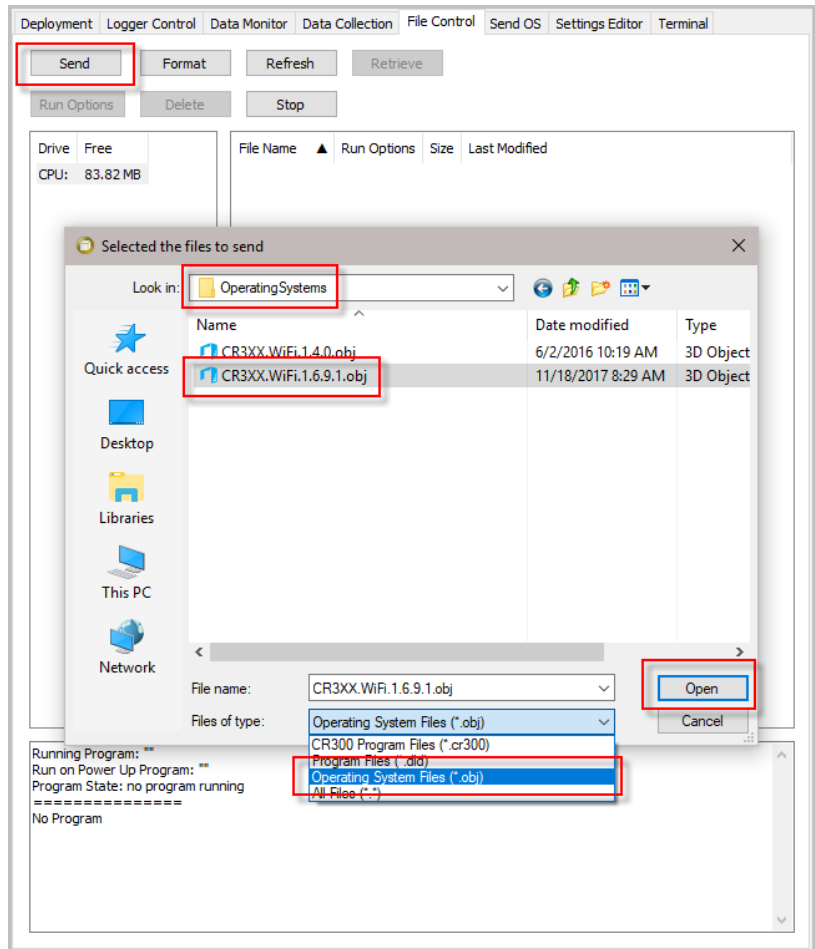


- Click the *DevConfig* **File Control** tab.
- Click the **CPU:** drive.

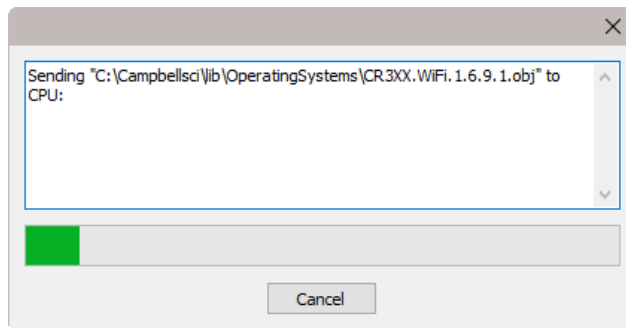


- Click **Send**.
- The **Select the files to send** dialog will appear. Navigate to the `C:\Campbellsci\Lib\OperatingSystems` directory.
- Set the **Files of type:** drop-down list to **Operating System Files (*.obj)**.
- Select **CR3XX.WiFi.1.6.9.1.obj** from the file list.

17. Click **Open**.



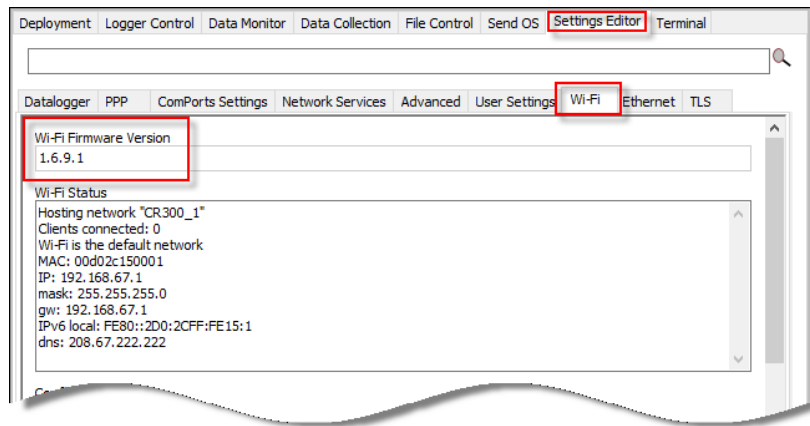
18. The new WiFi operating system is sent to the datalogger.



19. Once the progress bar reaches 50%, the **WiFi** LED on the datalogger will start flashing quickly for a period of time; then the datalogger will reboot. The update generally takes five to six minutes to complete.

20. Click **OK** once the progress bar reaches 100%.

21. Go to the *DevConfig Settings Editor* | **WiFi** tab and check that the **Wi-Fi Firmware Version** shows **1.6.9.1**. You may have to press the **F5** key to refresh the displayed information.



Your datalogger is now updated and running the latest WiFi daughter board operating system.

Campbell Scientific Companies

Campbell Scientific, Inc.

815 West 1800 North
Logan, Utah 84321
UNITED STATES

www.campbellsci.com • info@campbellsci.com

Campbell Scientific Canada Corp.

14532 – 131 Avenue NW
Edmonton AB T5L 4X4
CANADA

www.campbellsci.ca • dataloggers@campbellsci.ca

Campbell Scientific Africa Pty. Ltd.

PO Box 2450
Somerset West 7129
SOUTH AFRICA

www.campbellsci.co.za • cleroux@csafrica.co.za

Campbell Scientific Centro Caribe S.A.

300 N Cementerio, Edificio Breller
Santo Domingo, Heredia 40305
COSTA RICA

www.campbellsci.cc • info@campbellsci.cc

Campbell Scientific Southeast Asia Co., Ltd.

877/22 Nirvana@Work, Rama 9 Road
Suan Luang Subdistrict, Suan Luang District
Bangkok 10250
THAILAND

www.campbellsci.asia • info@campbellsci.asia

Campbell Scientific Ltd.

Campbell Park
80 Hathern Road
Shepshed, Loughborough LE12 9GX
UNITED KINGDOM

www.campbellsci.co.uk • sales@campbellsci.co.uk

Campbell Scientific Australia Pty. Ltd.

PO Box 8108
Garbutt Post Shop QLD 4814
AUSTRALIA

www.campbellsci.com.au • info@campbellsci.com.au

Campbell Scientific Ltd.

3 Avenue de la Division Leclerc
92160 ANTONY
FRANCE

www.campbellsci.fr • info@campbellsci.fr

Campbell Scientific (Beijing) Co., Ltd.

8B16, Floor 8 Tower B, Hanwei Plaza
7 Guanghua Road
Chaoyang, Beijing 100004
P.R. CHINA

www.campbellsci.com • info@campbellsci.com.cn

Campbell Scientific Ltd.

Fahrenheitstraße 13
28359 Bremen
GERMANY

www.campbellsci.de • info@campbellsci.de

Campbell Scientific do Brasil Ltda.

Rua Apinagés, nbr. 2018 – Perdizes
CEP: 01258-00 – São Paulo – SP
BRASIL

www.campbellsci.com.br • vendas@campbellsci.com.br

Campbell Scientific Spain, S. L.

Avda. Pompeu Fabra 7-9, local 1
08024 Barcelona
SPAIN

www.campbellsci.es • info@campbellsci.es

Please visit www.campbellsci.com to obtain contact information for your local US or international representative.