

# APPLICATION NOTE



## **CR6-WiFi Daughter Board OS Update Procedure to Resolve the KRACK Vulnerability**

12/17



# ***Table of Contents***

---

*PDF viewers: These page numbers refer to the printed version of this document. Use the PDF reader bookmarks tab for links to specific sections.*

<b>1. Download Executable and Check Current Operating Systems .....</b>	<b>1</b>
<b>2. Update to WiFi OS 3.01 .....</b>	<b>3</b>
<b>3. Update to WiFi OS 4.0.....</b>	<b>5</b>



# ***CR6-WiFi Daughter Board OS Update Procedure to Resolve the KRACK Vulnerability***

---

This procedure updates the CR6-WiFi daughter board OS to version 4.0 to resolve the KRACK vulnerability.

## **NOTE**

---

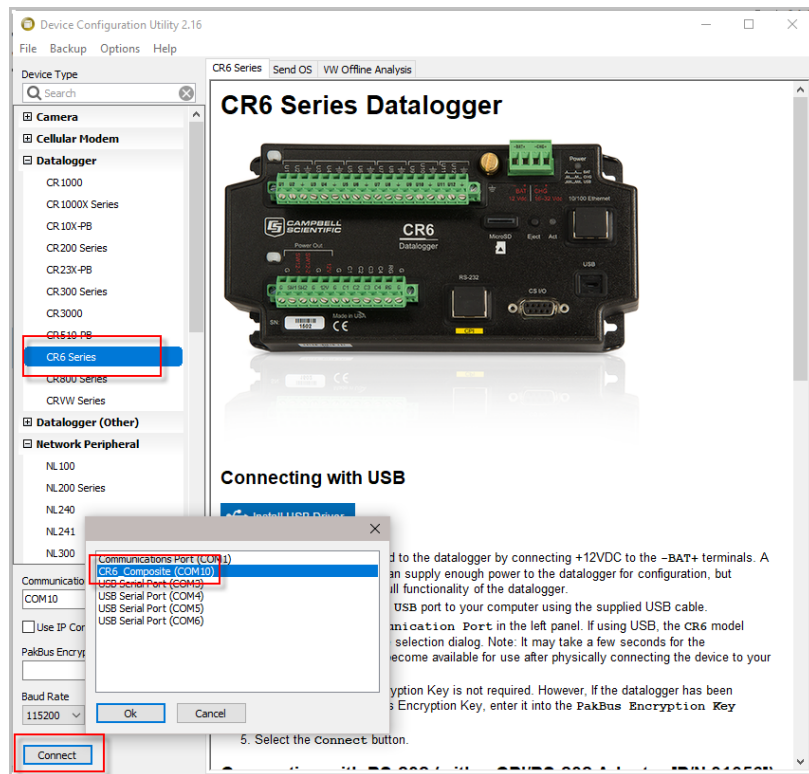
If your datalogger is running a WiFi daughter board OS version 3.01 or greater, skip to Section 3 after completing Section 1. Section 1 walks you through the steps to determine what OS version your datalogger has. If your datalogger is running a WiFi daughter board OS version less than 3.01, it must first be updated to version 3.01. Therefore, after completing Section 1, continue to Section 2 and complete the steps to update the OS to version 3.01. Then proceed to Section 3 and update the OS to version 4.00 which resolves the KRACK vulnerability.

---

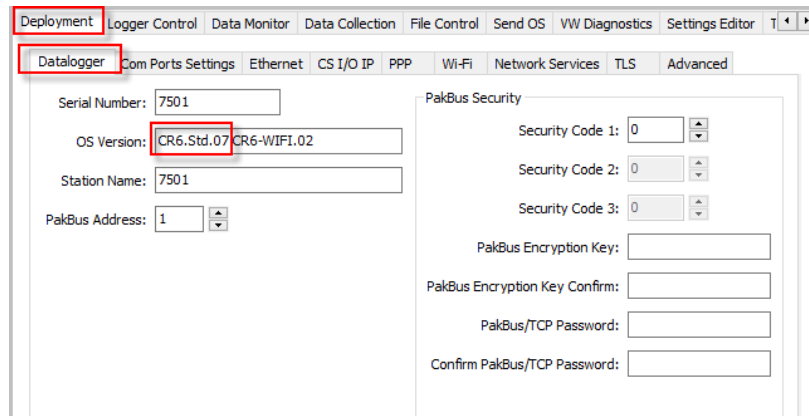
## **1. Download Executable and Check Current Operating Systems**

1. Download the executable, `CR6_Wifi_OS_Update_4.0.exe`, from our website at [www.campbellsci.com/downloads](http://www.campbellsci.com/downloads).
2. Run the executable file.
3. Apply power to the CR6. (A USB connection supplies 5 V power as well as a communication link, which is adequate for setup.)
4. If not using WiFi, connect your communication cable to the CR6.
5. Open *Device Configuration Utility (DevConfig)*.
6. Under **Device Type**, select **CR6 Series**.
7. Select the correct **Communication Port**. (If using WiFi, select the **Use IP Connection** checkbox and browse to or enter the IP address.)

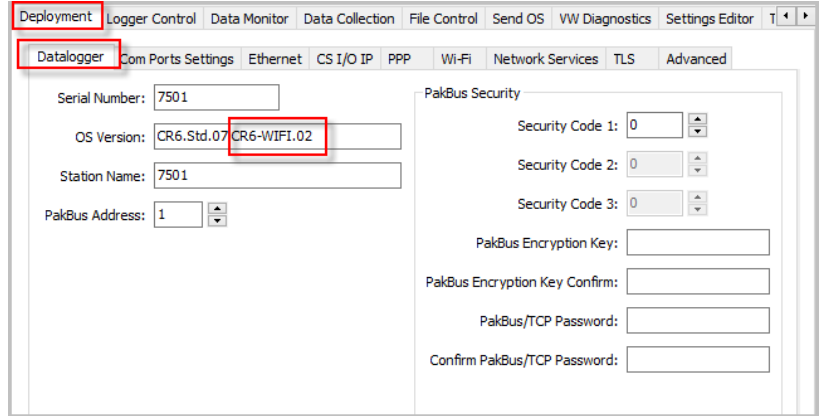
- Click **Connect**.



- As a precaution, back up the CR6 datalogger using the wizard accessed from the **Backup | Back Up Datalogger...** command (see [www.campbellsci.com/blog/update-datalogger-operating-system](http://www.campbellsci.com/blog/update-datalogger-operating-system)).
- Verify that you are running CR6 version 5 or later operating system. You can see this information in the **Deployment | Datalogger** tab in *DevConfig*. If you are running an earlier operating system, update the operating system (see [www.campbellsci.com/blog/update-datalogger-operating-system](http://www.campbellsci.com/blog/update-datalogger-operating-system)).



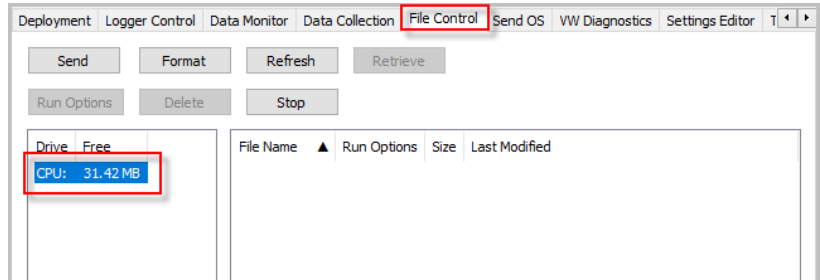
- Check to see what version of the WiFi daughter board operating system your datalogger is running. As in the previous step, you can see this information in the **Deployment | Datalogger** tab in *DevConfig*. The **OS Version** field shows the datalogger operating system version and WiFi daughter board operating system version (in red below) currently loaded into the datalogger.



- If your datalogger is already running WiFi daughter board OS 3.01 or greater, skip to Section 3, *Update to WiFi OS 4.0 (p. 5)*.

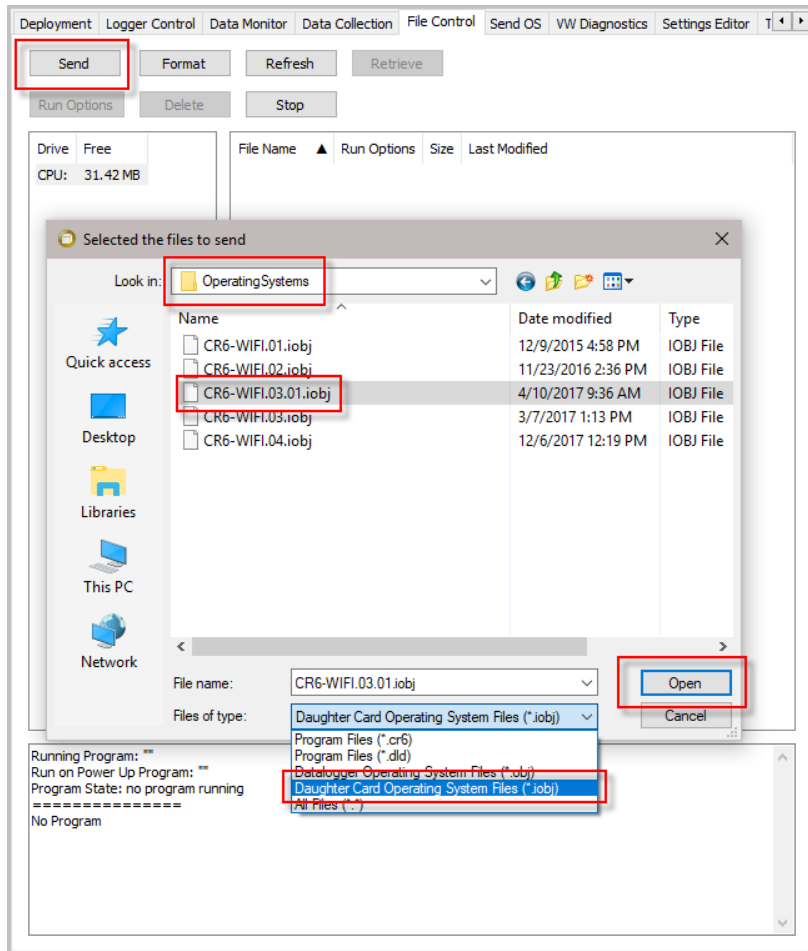
## 2. Update to WiFi OS 3.01

- Click the *DevConfig* **File Control** tab.
- Click the **CPU:** drive.

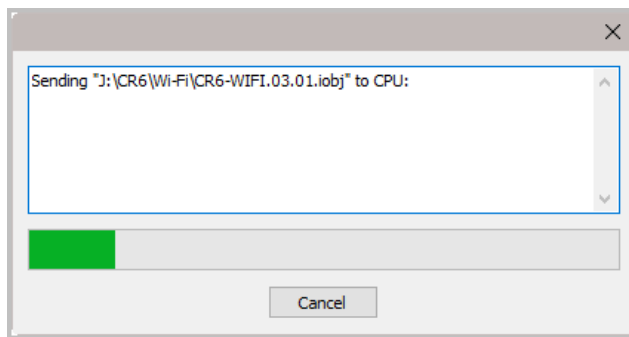


- Click **Send**.
- The **Select the files to send** dialog will appear. Navigate to the `C:\Campbellsci\Lib\OperatingSystems` directory.
- Set the **Files of type:** drop down list to **Daughter Card Operating System Files (\*.iobj)**.
- Select `CR6_WIFI.03.01.iobj` from the file list.

7. Click **Open**.



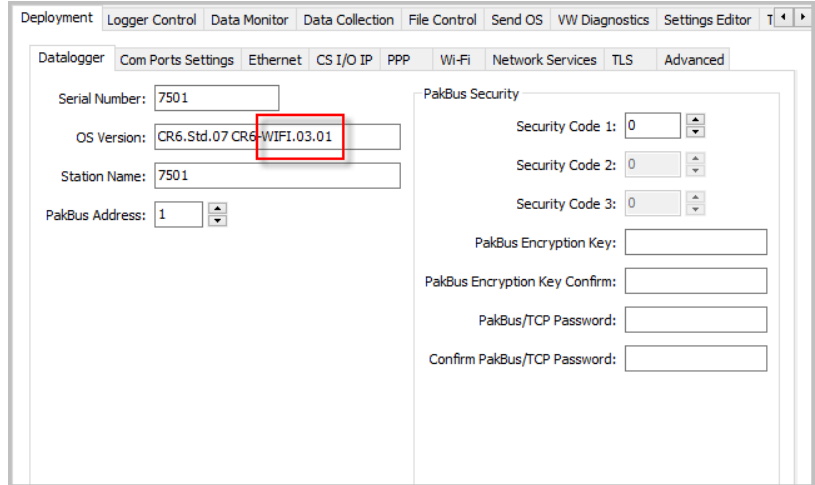
8. The new daughter board operating system is sent to the datalogger.



9. Once the progress bar reaches 100%, click **OK**.



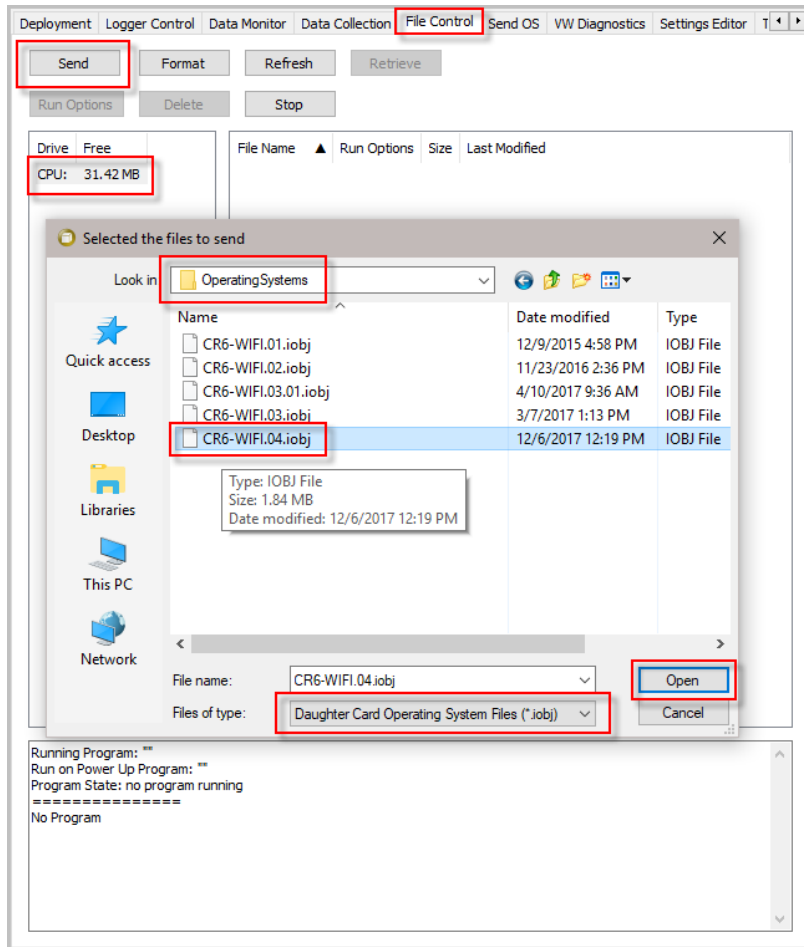
- The **WiFi** LED on the CR6-WiFi will flash green and red as the daughter board is being updated; the update generally takes two or three minutes to complete. After the flashing stops, return to the **Deployment | Datalogger** tab and check that the WiFi daughter board operating system shows version 03.01. You may have to press the **F5** key to refresh the displayed information.



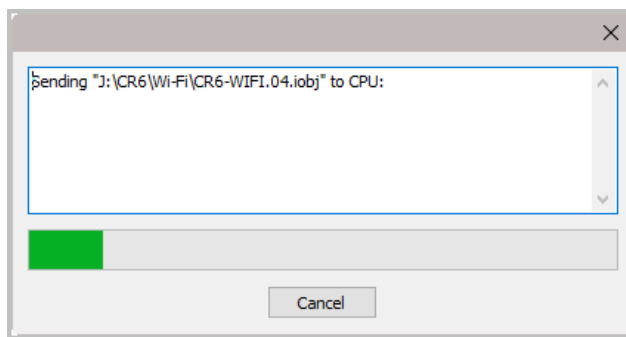
### 3. Update to WiFi OS 4.0

- Click the *DevConfig* **File Control** tab.
- Click the **CPU:** drive.
- Click **Send**.
- The **Select the files to send** dialog will appear. Navigate to the C:\Campbellsci\Lib\OperatingSystems directory.
- Set the **Files of type:** drop down list to **Daughter Card Operating System Files (\*.iobj)**.
- Select **CR6\_WIFI.04.iobj** from the file list.

7. Click **Open**.

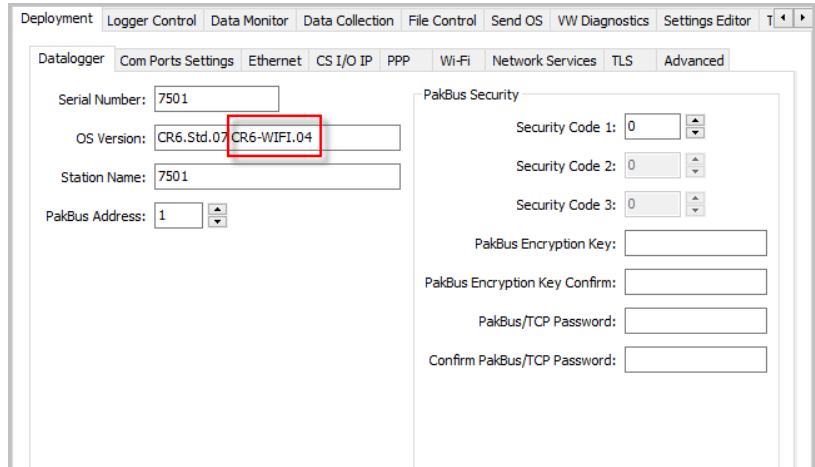


8. The new daughter board operating system is sent to the datalogger.



9. Once the progress bar reaches 100%, click **OK**.

10. The WiFi LED on the CR6-WiFi will flash green and red (and at times, just red) as the daughter board is being updated; the update generally takes two or three minutes to complete. After the flashing stops, return to the **Deployment | Datalogger** tab and check that the WiFi daughter board operating system shows version 04.00. You may have to press the **F5** key to refresh the displayed information.



Your datalogger is now updated and running the latest WiFi daughter board operating system.





## Campbell Scientific Companies

---

**Campbell Scientific, Inc.**

815 West 1800 North  
Logan, Utah 84321  
UNITED STATES

[www.campbellsci.com](http://www.campbellsci.com) • [info@campbellsci.com](mailto:info@campbellsci.com)

**Campbell Scientific Canada Corp.**

14532 – 131 Avenue NW  
Edmonton AB T5L 4X4  
CANADA

[www.campbellsci.ca](http://www.campbellsci.ca) • [dataloggers@campbellsci.ca](mailto:dataloggers@campbellsci.ca)

**Campbell Scientific Africa Pty. Ltd.**

PO Box 2450  
Somerset West 7129  
SOUTH AFRICA

[www.campbellsci.co.za](http://www.campbellsci.co.za) • [cleroux@csafrica.co.za](mailto:cleroux@csafrica.co.za)

**Campbell Scientific Centro Caribe S.A.**

300 N Cementerio, Edificio Breller  
Santo Domingo, Heredia 40305  
COSTA RICA

[www.campbellsci.cc](http://www.campbellsci.cc) • [info@campbellsci.cc](mailto:info@campbellsci.cc)

**Campbell Scientific Southeast Asia Co., Ltd.**

877/22 Nirvana@Work, Rama 9 Road  
Suan Luang Subdistrict, Suan Luang District  
Bangkok 10250  
THAILAND

[www.campbellsci.asia](http://www.campbellsci.asia) • [info@campbellsci.asia](mailto:info@campbellsci.asia)

**Campbell Scientific Ltd.**

Campbell Park  
80 Hathern Road  
Shepshed, Loughborough LE12 9GX  
UNITED KINGDOM

[www.campbellsci.co.uk](http://www.campbellsci.co.uk) • [sales@campbellsci.co.uk](mailto:sales@campbellsci.co.uk)

**Campbell Scientific Australia Pty. Ltd.**

PO Box 8108  
Garbutt Post Shop QLD 4814  
AUSTRALIA

[www.campbellsci.com.au](http://www.campbellsci.com.au) • [info@campbellsci.com.au](mailto:info@campbellsci.com.au)

**Campbell Scientific Ltd.**

3 Avenue de la Division Leclerc  
92160 ANTONY  
FRANCE

[www.campbellsci.fr](http://www.campbellsci.fr) • [info@campbellsci.fr](mailto:info@campbellsci.fr)

**Campbell Scientific (Beijing) Co., Ltd.**

8B16, Floor 8 Tower B, Hanwei Plaza  
7 Guanghua Road  
Chaoyang, Beijing 100004  
P.R. CHINA

[www.campbellsci.com](http://www.campbellsci.com) • [info@campbellsci.com.cn](mailto:info@campbellsci.com.cn)

**Campbell Scientific Ltd.**

Fahrenheitstraße 13  
28359 Bremen  
GERMANY

[www.campbellsci.de](http://www.campbellsci.de) • [info@campbellsci.de](mailto:info@campbellsci.de)

**Campbell Scientific do Brasil Ltda.**

Rua Apinagés, n.br. 2018 – Perdizes  
CEP: 01258-00 – São Paulo – SP  
BRASIL

[www.campbellsci.com.br](http://www.campbellsci.com.br) • [vendas@campbellsci.com.br](mailto:vendas@campbellsci.com.br)

**Campbell Scientific Spain, S. L.**

Avda. Pompeu Fabra 7-9, local 1  
08024 Barcelona  
SPAIN

[www.campbellsci.es](http://www.campbellsci.es) • [info@campbellsci.es](mailto:info@campbellsci.es)

Please visit [www.campbellsci.com](http://www.campbellsci.com) to obtain contact information for your local US or international representative.