



Essex Region Flood Monitoring

How Campbell Scientific Data Services saves on flood and erosion monitoring network

Photo: Essex Region Conservation Authority site along the Great Lakes.

The Essex Region Conservation Authority (ERCA) provides locally-based leadership by creating a sustainable environment for the residents of the Essex region.

The ERCA was established in 1973 with jurisdiction in nine municipalities. One of the Authority's important missions is to protect the region's inhabitants from flooding and erosion.

Living along the Great Lakes creates an opportunity for connection between the citizens in the region and the environment. But, the Lakes can also be the source of tremendous storms that threaten people and property.

In 1991, the ERCA sourced equipment and advice from Campbell Scientific Canada (CSC) to help the region better prepare for and respond to extreme weather and potential flood events. Five weather stations

reporting rainfall, temperature, and wind direction were installed.

Almost 25 years later, the data loggers installed by Campbell Scientific Canada are still collecting information for the ERCA. A recent challenge for the ERCA created an opportunity for the two organizations to further their working relationship and improve the level of service to the region.

The Problem – Costly resources

Resource challenges meant that the data sourcing equipment was not always properly maintained and data collection was inconsistent. With staff turnover, it became increasingly difficult for people to learn about the network and equipment. Additionally, the ERCA needed to find new temporary staff every year to maintain the systems and

More info: **780.454.2505**

campbellsci.ca/data-services



Weather station sites that feed data into the ERCA weather monitoring website.

review data. The costs and time spent on these activities hardly added value to the project.

The Solution – Outsourcing data services and station maintenance

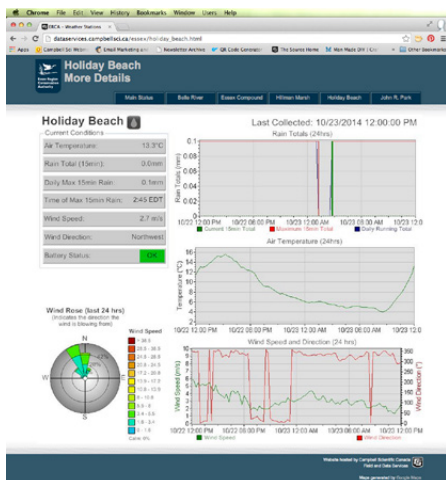
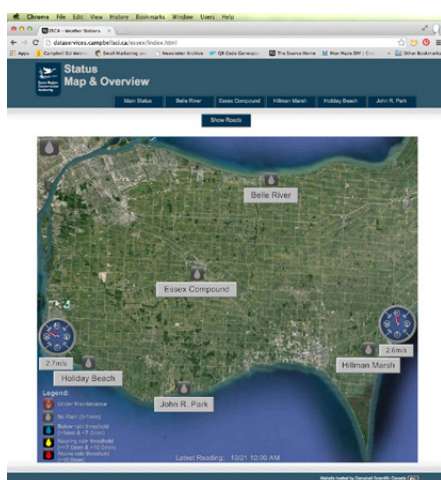
The answer to the problem arrived in a cost effective, new service provided by Campbell Scientific Canada: CSC Field and Data Services.

CSC Data Services provides clients with complete solutions to data collection and reporting. For the Essex Region Conservation Authority that includes equipment maintenance, data collection, and data

reporting on a customized website that is updated every 15 minutes.

While the ERCA still performs some minor equipment maintenance such as removing leaves and debris from rain gauges, they no longer need to manage the network or calibrate equipment. And data review is as easy as logging in to their own customized website, built for them by CSC Data Services.

CSC Field and Data Services provides customized services to fulfill requirements on a client-by-client basis. This allows CSC to accommodate many systems and integrate into existing networks. And it means that our services are constantly being expanded. Depending on your needs, CSC offers a range of services from basic assistance with setting up a data collection network to managing an entire project including supporting the infrastructure required for your data collection. Whether it is one station or a hundred, CSC will ensure that your data is safe, secure, and accurate.



Left and centre: Data review is as easy as logging into a website. Screen shots of the customized website built for ERCA which displays updated reports and weather data every 15 minutes.



Weather station site in ERCA.