

INSTRUCTION MANUAL



AM25T Solid-State Thermocouple Multiplexer

Revision: 4/17



Copyright © 1995-2017
Campbell Scientific, Inc.

WARRANTY AND ASSISTANCE

This equipment is warranted by CAMPBELL SCIENTIFIC (CANADA) CORP. ("CSC") to be free from defects in materials and workmanship under normal use and service for **twelve (12) months** from date of shipment unless specified otherwise. ***** **Batteries are not warranted.** ***** CSC's obligation under this warranty is limited to repairing or replacing (at CSC's option) defective products. The customer shall assume all costs of removing, reinstalling, and shipping defective products to CSC. CSC will return such products by surface carrier prepaid. This warranty shall not apply to any CSC products which have been subjected to modification, misuse, neglect, accidents of nature, or shipping damage. This warranty is in lieu of all other warranties, expressed or implied, including warranties of merchantability or fitness for a particular purpose. CSC is not liable for special, indirect, incidental, or consequential damages.

Products may not be returned without prior authorization. To obtain a Return Merchandise Authorization (RMA), contact CAMPBELL SCIENTIFIC (CANADA) CORP., at (780) 454-2505. An RMA number will be issued in order to facilitate Repair Personnel in identifying an instrument upon arrival. Please write this number clearly on the outside of the shipping container. Include description of symptoms and all pertinent details.

CAMPBELL SCIENTIFIC (CANADA) CORP. does not accept collect calls.

Non-warranty products returned for repair should be accompanied by a purchase order to cover repair costs.



Campbell Scientific (Canada) Corp.
14532 131 Avenue NW | Edmonton AB T5L 4X4
780.454.2505 | fax 780.454.2655 | campbellsci.ca

Assistance

Products may not be returned without prior authorization. The following contact information is for Canadian and international clients residing in countries served by Campbell Scientific (Canada) Corp. directly. Affiliate companies handle repairs for clients within their territories. Please visit www.campbellsci.ca to determine which Campbell Scientific company serves your country.

To obtain a Returned Materials Authorization (RMA), contact CAMPBELL SCIENTIFIC (CANADA) CORP., phone (780) 454-2505. After a measurement consultant determines the nature of the problem, an RMA number will be issued. Please write this number clearly on the outside of the shipping container. Campbell Scientific's shipping address is:

CAMPBELL SCIENTIFIC (CANADA) CORP.

RMA# _____
14532 131 Avenue NW
Edmonton, Alberta T5L 4X4
Canada

For all returns, the client must fill out a "Statement of Product Cleanliness and Decontamination" form and comply with the requirements specified in it. The form is available from our web site at www.campbellsci.ca/repair. A completed form must be either emailed to repair@campbellsci.ca or faxed to (780) 454-2655. Campbell Scientific (Canada) Corp. is unable to process any returns until we receive this form. If the form is not received within three days of product receipt or is incomplete, the product will be returned to the client at the client's expense. Campbell Scientific (Canada) Corp. reserves the right to refuse service on products that were exposed to contaminants that may cause health or safety concerns for our employees.

Precautions

DANGER — MANY HAZARDS ARE ASSOCIATED WITH INSTALLING, USING, MAINTAINING, AND WORKING ON OR AROUND TRIPODS, TOWERS, AND ANY ATTACHMENTS TO TRIPODS AND TOWERS SUCH AS SENSORS, CROSSARMS, ENCLOSURES, ANTENNAS, ETC. FAILURE TO PROPERLY AND COMPLETELY ASSEMBLE, INSTALL, OPERATE, USE, AND MAINTAIN TRIPODS, TOWERS, AND ATTACHMENTS, AND FAILURE TO HEED WARNINGS, INCREASES THE RISK OF DEATH, ACCIDENT, SERIOUS INJURY, PROPERTY DAMAGE, AND PRODUCT FAILURE. TAKE ALL REASONABLE PRECAUTIONS TO AVOID THESE HAZARDS. CHECK WITH YOUR ORGANIZATION'S SAFETY COORDINATOR (OR POLICY) FOR PROCEDURES AND REQUIRED PROTECTIVE EQUIPMENT PRIOR TO PERFORMING ANY WORK.

Use tripods, towers, and attachments to tripods and towers only for purposes for which they are designed. Do not exceed design limits. Be familiar and comply with all instructions provided in product manuals. Manuals are available at www.campbellsci.ca or by telephoning (780) 454-2505 (Canada). You are responsible for conformance with governing codes and regulations, including safety regulations, and the integrity and location of structures or land to which towers, tripods, and any attachments are attached. Installation sites should be evaluated and approved by a qualified personnel (e.g. engineer). If questions or concerns arise regarding installation, use, or maintenance of tripods, towers, attachments, or electrical connections, consult with a licensed and qualified engineer or electrician.

General

- Prior to performing site or installation work, obtain required approvals and permits.
- Use only qualified personnel for installation, use, and maintenance of tripods and towers, and any attachments to tripods and towers. The use of licensed and qualified contractors is highly recommended.
- Read all applicable instructions carefully and understand procedures thoroughly before beginning work.
- Wear a **hardhat** and **eye protection**, and take **other appropriate safety precautions** while working on or around tripods and towers.
- **Do not climb** tripods or towers at any time, and prohibit climbing by other persons. Take reasonable precautions to secure tripod and tower sites from trespassers.
- Use only manufacturer recommended parts, materials, and tools.

Utility and Electrical

- **You can be killed** or sustain serious bodily injury if the tripod, tower, or attachments you are installing, constructing, using, or maintaining, or a tool, stake, or anchor, come in **contact with overhead or underground utility lines**.
- Maintain a distance of at least one-and-one-half times structure height, 6 meters (20 feet), or the distance required by applicable law, **whichever is greater**, between overhead utility lines and the structure (tripod, tower, attachments, or tools).
- Prior to performing site or installation work, inform all utility companies and have all underground utilities marked.
- Comply with all electrical codes. Electrical equipment and related grounding devices should be installed by a licensed and qualified electrician.

Elevated Work and Weather

- Exercise extreme caution when performing elevated work.
- Use appropriate equipment and safety practices.
- During installation and maintenance, keep tower and tripod sites clear of un-trained or non-essential personnel. Take precautions to prevent elevated tools and objects from dropping.
- Do not perform any work in inclement weather, including wind, rain, snow, lightning, etc.

Maintenance

- Periodically (at least yearly) check for wear and damage, including corrosion, stress cracks, frayed cables, loose cable clamps, cable tightness, etc. and take necessary corrective actions.
- Periodically (at least yearly) check electrical ground connections.

WHILE EVERY ATTEMPT IS MADE TO EMBODY THE HIGHEST DEGREE OF SAFETY IN ALL CAMPBELL SCIENTIFIC PRODUCTS, THE CLIENT ASSUMES ALL RISK FROM ANY INJURY RESULTING FROM IMPROPER INSTALLATION, USE, OR MAINTENANCE OF TRIPODS, TOWERS, OR ATTACHMENTS TO TRIPODS AND TOWERS SUCH AS SENSORS, CROSSARMS, ENCLOSURES, ANTENNAS, ETC.

PLEASE READ FIRST

About this manual

Please note that this manual was originally produced by Campbell Scientific Inc. (CSI) primarily for the US market. Some spellings, weights and measures may reflect this origin.

Some useful conversion factors:

Area:	1 in ² (square inch) = 645 mm ²
Length:	1 in. (inch) = 25.4 mm
	1 ft (foot) = 304.8 mm
	1 yard = 0.914 m
	1 mile = 1.609 km
Mass:	1 oz. (ounce) = 28.35 g
	1 lb (pound weight) = 0.454 kg
Pressure:	1 psi (lb/in ²) = 68.95 mb
Volume:	1 US gallon = 3.785 litres

In addition, part ordering numbers may vary. For example, the CABLE5CBL is a CSI part number and known as a FIN5COND at Campbell Scientific Canada (CSC). CSC Technical Support will be pleased to assist with any questions.

About sensor wiring

Please note that certain sensor configurations may require a user supplied jumper wire. It is recommended to review the sensor configuration requirements for your application and supply the jumper wire is necessary.

Table of Contents

PDF viewers: These page numbers refer to the printed version of this document. Use the PDF reader bookmarks tab for links to specific sections.

1. Introduction	1
2. Precautions	2
3. Initial Inspection.....	2
4. Overview	2
4.1 Measurement Terminals.....	2
4.2 Excitation Terminal (VX).....	2
4.3 Power (12V).....	3
4.4 Power Ground (G), Ground Terminals (\oplus).....	3
4.5 Analog Ground (\oplus).....	3
4.6 Reset (RES).....	3
4.7 Clock (CLK)	3
5. Overview.....	4
6. Specifications.....	4
7. Installation.....	5
7.1 Installing the AM25T.....	5
7.2 Datalogger to AM25T Wiring.....	6
7.3 Sensor to AM25T Wiring	7
7.3.1 Thermocouple Measurement.....	7
7.3.2 Differential Analog Measurements.....	8
7.3.3 Mixed Sensor Types	8
8. Operation	8
8.1 General Measurement Considerations	8
8.2 Datalogger Programming	9
8.2.1 CRBasic Programming	10
9. Maintenance	10

Appendices

A. Importing <i>Short Cut</i> Code Into <i>CRBasic Editor</i> ...	A-1
--	------------

B. Example Program..... B-1

Figures

1-1. AM25T Solid-State Thermocouple Multiplexer 1

5-1. AM25T Solid-State Thermocouple Multiplexer with cover..... 4

7-1. External Battery Connections..... 6

7-2. Differential Measurement of Type T Thermocouple..... 8

7-3. Differential Voltage Measurement 8

8-1. Short Cut 9

Tables

7-1. AM25T to Datalogger Wiring..... 7

CRBasic Example

B-1. CR6 Program Using One Instruction to Measure Both the
Reference Temperature and Thermocouples..... B-1

AM25T Solid-State Thermocouple Multiplexer

1. Introduction

The AM25T (FIGURE 1-1) multiplexer increases the number of channels for measuring thermocouples or voltage sensors with Campbell Scientific dataloggers. The AM25T is positioned between the sensors and the datalogger. The datalogger controls the AM25T's solid-state relays, sequentially connecting each sensor to the datalogger.

The AM25T is not suitable for resistive bridge measurements (high impedance of the solid-state relays) or multiplexing power (25 mA maximum switching current).

A maximum of 25 thermocouples (differential voltage measurement) can be multiplexed by an AM25T. Single-ended voltage measurements are not recommended.

The AM25T must be used in a noncondensing environment. An enclosure is required for field use. In applications where one or two multiplexers are deployed in the field, the ENC12/14 can be used. The ENC16/18 can be used to house several multiplexers at the same site.



FIGURE 1-1. AM25T Solid-State Thermocouple Multiplexer

2. Precautions

- The AM25T is not designed to multiplex power. Its intended function is to switch low-level analog signals. Switched currents in excess of 30 mA will degrade the relay contacts involved, rendering that channel unsuitable for further low-level analog measurement. Customers who need to switch power are directed to Campbell Scientific's SDM-CD16AC, A6REL-12, or A21REL-12 relays.
- After wiring an AM25T, exercise due care to avoid inadvertently putting excess voltage on a line or short circuiting a power supply which might damage connected devices such as datalogger, wiring panel, sensor, or multiplexer (not covered under warranty).

3. Initial Inspection

- The AM25T ships with:
 - AM25T Cover
 - 4 each pn 6044, Grommet
 - 4 each pn 505, Screw
- Upon receipt of the AM25T, inspect the packaging and contents for damage. File damage claims with the shipping company.
- Immediately check package contents. Thoroughly check all packaging material for product that may be concealed. Check model number, part numbers, and product descriptions against the shipping documents. Model or part numbers are found on each product. On cables, the number is often found at the end of the cable that connects to the measurement device. Ensure that the expected lengths of cables were received. Contact Campbell Scientific immediately if there are any discrepancies.

4. Overview

The AM25T is connected to the datalogger with eight insulated wires and a large ground wire. These wires are used to power and control the multiplexer, and connect the common analog inputs to the datalogger.

4.1 Measurement Terminals

There are 25 differential channels on the AM25T. These channels are labeled **1H** and **1L** through **25H** and **25L**. The channels are sequentially connected and reversed to the common channels **HI** and **LO**.

4.2 Excitation Terminal (VX)

This terminal is used to excite the reference temperature (PRT) on the AM25T. The excitation line is protected from transients with a transorb. (Earlier versions of the AM25T, prior to serial number 1839, used a Zener diode for protection. The diode limited the negative excitation voltage to -400 mV.)

4.3 Power (12V)

The AM25T requires a 9.6 to 16 Vdc (12 Vdc nominal) power supply.

In low current drain applications, it is convenient to power the AM25T from the datalogger's battery. For power intensive operations, use a high amp hour 12 Vdc battery.

See Campbell Scientific's application note on power supplies (<https://s.campbellsci.com/documents/us/technical-papers/pow-sup.pdf>) for information on calculating the power requirements for a system.

4.4 Power Ground (G), Ground Terminals (\perp)

Each differential input channel has a ground terminal located next to it. The ground terminals (\perp) are common with the power ground (G) and the ground lug on the base. Connect the sensor shields to the ground terminals (\perp). Always tie the datalogger and multiplexer to a common earth ground via the ground lug.

4.5 Analog Ground (\perp)

The analog ground terminal is the ground reference for the AM25T reference temperature measurement. It is the \perp terminal located between the **VX** and **HI** terminals. Analog ground is not common with the other ground terminals labeled \perp . **The analog ground terminal must be connected to the datalogger ground as shown in TABLE 7-1.**

4.6 Reset (RES)

A control port is used to operate the **RES** channel. The AM25T is reset and activated by applying and holding 5 Vdc to the **RES** channel. Once the AM25T is activated, the AM25T reference temperature can be immediately measured. The AM25T enters its quiescent state when the **RES** channel is set to 0 Vdc.

4.7 Clock (CLK)

Pulsing the **CLK** channel sequentially advances the relays. A control port is used to operate the **CLK** channel.

The first **CLK** pulse advances the relays to the reference temperature excitation channel. The second **CLK** pulse advances the relays and connects **HI** and **LO** to **1H** and **1L** on the multiplexer.

NOTE

Two clock pulses are required to advance to the next adjacent sensor input channel on the AM25T.

The fourth **CLK** pulse advances the relays and connects **HI** and **LO** to **2H** and **2L**. The sixth **CLK** pulse advance the relays and connects **HI** and **LO** to **3H** and **3L**. This sequence is continued for the remaining input channels.

5. Overview

The AM25T is housed in an anodized aluminum case with a cover that will help reduce temperature gradients across the AM25T’s terminal strips (FIGURE 5-1).

The terminal strips that run the length of the AM25T are for sensor connections. All inputs are protected by spark gaps. All terminals accept stripped and tinned lead wires up to 1.5 mm (0.059 inches) in diameter. A strain-relief flange is located between the input terminals.

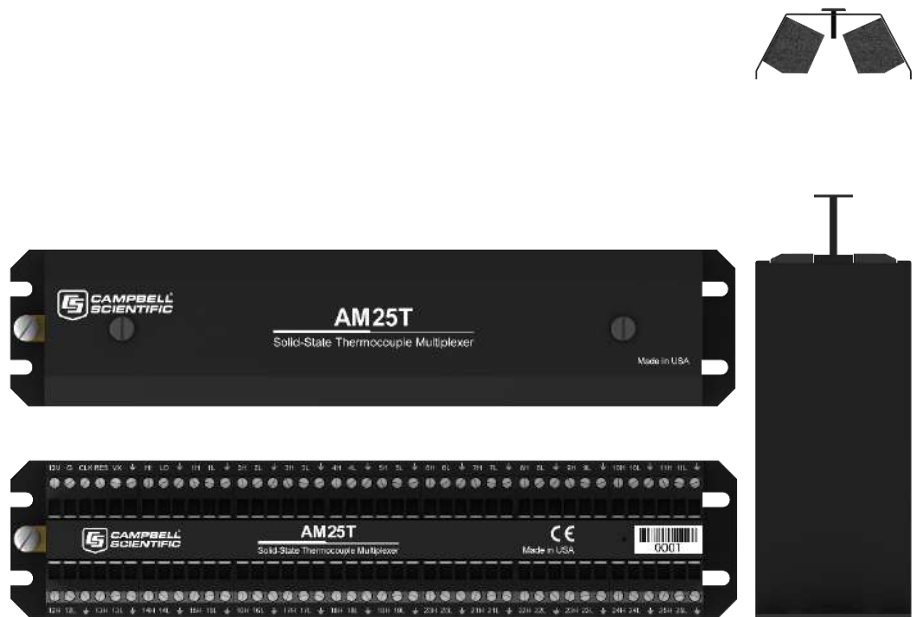


FIGURE 5-1. AM25T Solid-State Thermocouple Multiplexer with cover

6. Specifications

Power:	Unregulated 9.6 to 16 Vdc; 12 Vdc nominal
Current Drain	
Quiescent:	0.5 mA
Active:	1.0 mA (typical)
Enable	
Inactive:	< 0.9 V
Active:	3.5 to 5.0 V (7 V max.)
Clock	
The relays are advanced on the falling edge of the clock pulse (transition from >3.5 V to <1.5 V; 7 V max.). The minimum clock pulse width is limited by the datalogger.	
Minimum ON Time:	50 microseconds
Minimum OFF Time:	60 microseconds

Operating Temperature Standard:	–40 to 85 °C PRT accuracy ± 0.4 °C
Operating Humidity Noncondensing:	0 to 95%
Dimensions	
Length:	23.6 cm (9.3 in)
Width:	5.10 cm (2.0 in)
Depth:	13.2 cm (5.2 in)
Weight:	0.91 kg (2.0 lb) 3.6 kg (8.0 lb); shipping
Expandability (Nominal)*:	2 AM25Ts per CR800 or CR850 3 AM25Ts per CR6 4 AM25Ts per CR1000, CR3000 7 AM25Ts per CR5000 CR9000X variable, depending on how many CR9051E modules are installed
Maximum Cable Length:	Multiplexers can be located up to 305 m (1000 ft) from the datalogger. When lightning protection is required, do not exceed 152 m (500 ft) in cable length. The spark gaps will not fire if the heavy ground wire is longer than 152 m (500 ft).
Typical relay Resistance:	500 Ω
Maximum Switching Current:	25 mA; switching currents greater than 25 mA will damage the relays and render them unusable.
Compliance:	View the EU Declaration of Conformity at www.campbellsci.com/am25t

*Assumes sequential activation of multiplexers and that each datalogger channel is uniquely dedicated. If your application requires additional multiplexing capability, please consult Campbell Scientific for application assistance.

7. Installation

7.1 Installing the AM25T

The AM25T may be operated in a non-condensing environment, such as a laboratory, without being housed in an enclosure. For field use, the AM25T must be protected against dust and liquid. Campbell Scientific offers weather-resistant enclosures for this purpose.

Fasten the AM25T to the enclosure backplate. Securely fasten the leads to the strain relief flange running between the AM25T terminal strips and install the cover to reduce temperature gradients during thermocouple measurements.

7.2 Datalogger to AM25T Wiring

When powering the AM25T from the same battery as the datalogger, connect the datalogger to the AM25T as shown in TABLE 7-1. Two CABLE4CBL-L cables typically carry control, power, and measurement signals between the AM25T and the datalogger.

WARNING

Do not reverse the polarity of the +12 volt and ground wires. Damage to the multiplexer, sensors, and datalogger will occur.

A separate battery can be used to power the AM25T. A separate battery might be used when the AM25T is installed some distance from the datalogger. Ground must be connected between the datalogger and the AM25T (FIGURE 7-1).

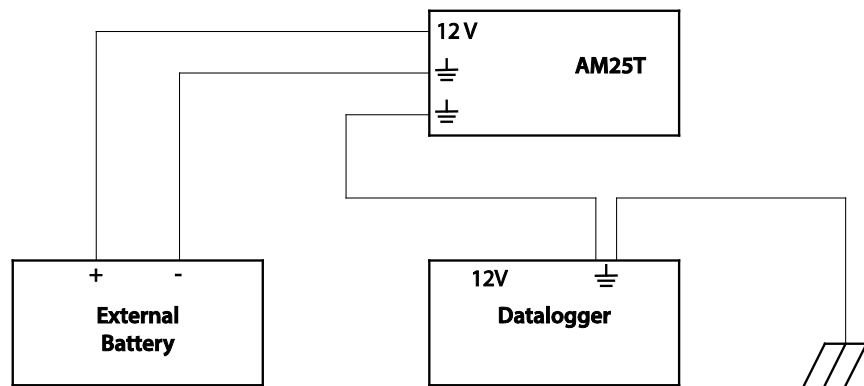


FIGURE 7-1. External Battery Connections

When leads in excess of 152 m (500 feet) are used to connect the datalogger to the AM25T, it may be necessary to compensate for the drop in PRT excitation voltage.

CAUTION

All AM25T inputs are spark gap protected. To ensure that the spark gaps fire, the large ground wire between the AM25T and the datalogger must not be greater than 152 m (500 ft). In applications where lightning protection is not required, limit the cable length between the AM25T and the datalogger to 305 m (1000 ft).

TABLE 7-1. AM25T to Datalogger Wiring

Function	AM25T	Datalogger
12 Vdc Power	12V	12V
Power Ground	G	G
Analog Ground ¹	\perp	\perp
Clock	CLK	U or Control Port
Reset	RES	U or Control Port
PRT Excitation	VX	VX , U , or Control Port
Common High	HI	Diff H , U , or Control Port
Common Low	LO	Diff L , U , or Control Port
¹ Analog Ground is the \perp terminal located between the VX and HI terminals on the AM25T.		

7.3 Sensor to AM25T Wiring

This section and the examples describe differential voltage measurements of thermocouples. It is possible to make single-ended measurements with the AM25T; however, they are more likely to have problems.

Shield wires are connected to the ground terminal next to the measurement channel and left unattached at the sensor.

7.3.1 Thermocouple Measurement

An internal reference PRT is located in the AM25T. This reference temperature does not require an additional datalogger input to measure the reference.

Thermal gradients between the AM25T sensor input terminals and the PRT cause errors in thermocouple readings. For example, a one-degree gradient between input terminals and the PRT will result in a one-degree measurement error. The thermal bar in the AM25T, which includes the strain relief, and the AM25T cover are designed to reduce gradients. The PRT is attached to the thermal bar.

Heat conduction along the thermocouple wire, into the terminal strips, can be reduced by coiling some excess lead wire inside the enclosure.

The datalogger manual contains a thorough discussion on thermocouple measurements and error analysis. Consult the datalogger manual for more details.

For a differential voltage measurement of a thermocouple, wire the high side of the thermocouple to the high side of a differential input channel on the AM25T and the low side of the thermocouple to the low side of the channel. Thermocouples that follow the U.S. industry standards use red insulation on the low side of the thermocouple. Wire one thermocouple per differential input channel (FIGURE 7-2).

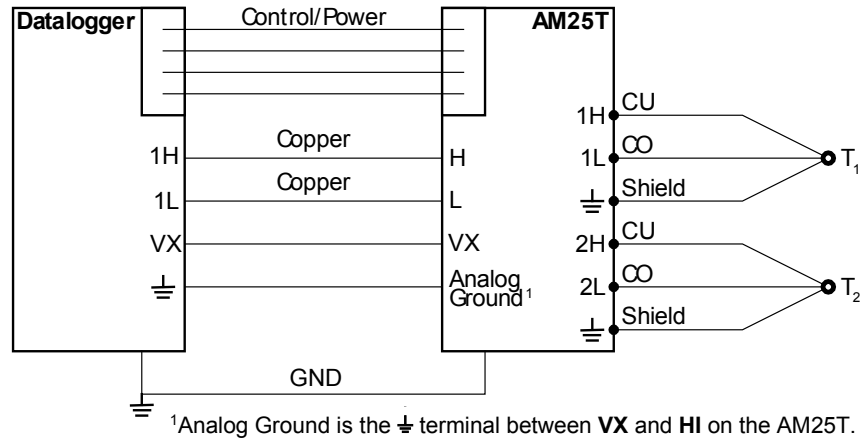


FIGURE 7-2. Differential Measurement of Type T Thermocouple

7.3.2 Differential Analog Measurements

Connect one differential sensor to a differential AM25T input channel. Connect the sensor shields to the ground terminals next to the input channel. Up to 25 differential sensors may be measured by one differential channel on the datalogger (FIGURE 7-3).

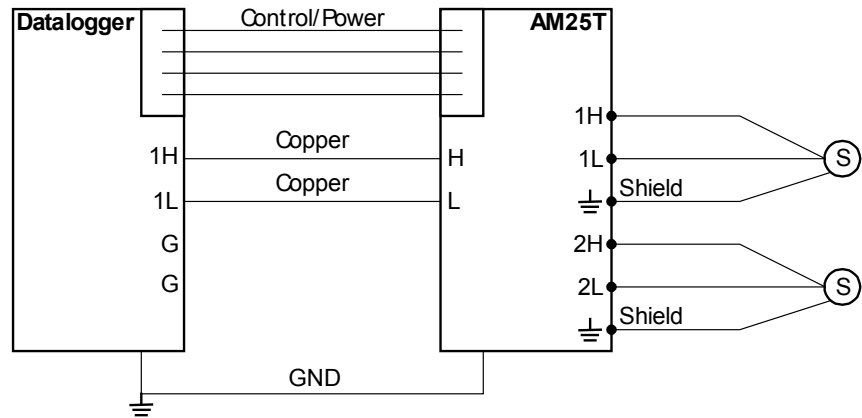


FIGURE 7-3. Differential Voltage Measurement

7.3.3 Mixed Sensor Types

Different sensors may be mixed on the AM25T. Additional loops and measurement instructions will be required.

8. Operation

8.1 General Measurement Considerations

Cables have additional capacitance that increases the time required for a signal to settle its true value. To reduce settling time, Campbell Scientific

recommends use of Teflon®, polyethylene, or polypropylene insulation around individual conductors. Do not use PVC as conductor insulation. PVC may be used as a cable jacket.

With long lead lengths, a delay within the measurement instruction will allow the capacitance of the lead wires to discharge before the measurement is made. Consult the measurement section of the datalogger manual for more information.

8.2 Datalogger Programming

Short Cut can build many program configurations for various supported sensors providing a quick way to generate a program and wiring diagram (FIGURE 8-1). *Short Cut* can be downloaded free of charge (www.campbellsci.com).

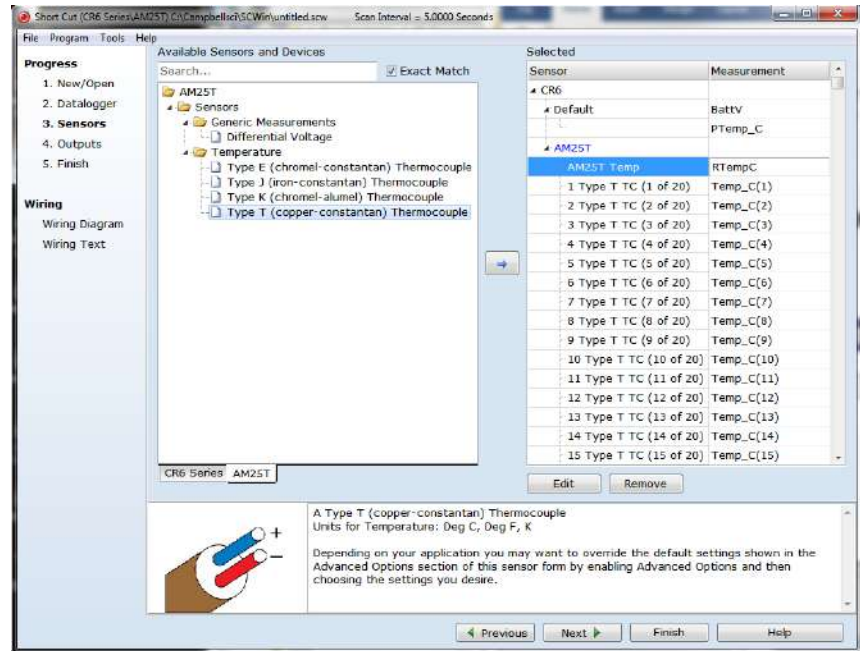


FIGURE 8-1. *Short Cut*

Short Cut is the best source for up-to-date datalogger programming code. Programming code is needed when:

- Creating a program for a new datalogger installation
- Adding sensors to an existing datalogger program

If the data acquisition requirements are simple, a datalogger program can be created and maintained exclusively with *Short Cut*. If the data acquisition needs are more complex, the files that *Short Cut* creates are a great source for programming code to start a new program or add to an existing custom program.

NOTE

Short Cut cannot edit programs after they are imported and edited in *CRBasic Editor*.

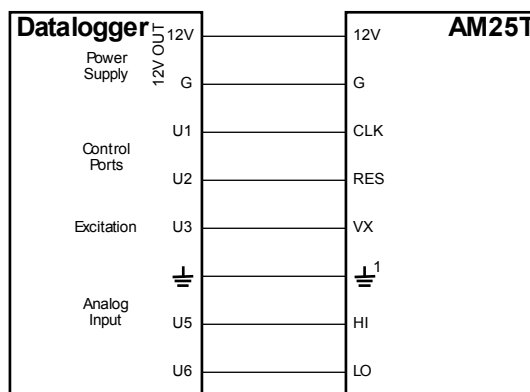
If there is a need to import *Short Cut* code into the *CRBasic Editor* to create or add to a custom program, follow the procedure in Appendix A, *Importing Short Cut Code Into CRBasic Editor* (p. A-1). Programming basics for CRBasic dataloggers are provided in the following section. A complete program example for a select datalogger can be found in Appendix B, Example Program (p. B-1).

8.2.1 CRBasic Programming

In CRBasic, the **AM25T()** instruction is used to control the AM25T multiplexer with the datalogger. The instruction measures the PRT incorporated in the AM25T and uses it as a reference temperature for thermocouple measurements. The **AM25T()** instruction and parameters are as follows:

AM25T (Dest, Reps, Range, AM25TChan, DiffChan, TCTYPE, TRef, ClkPort, ResPort, ExChan, RevDiff, SettlingTime, Integ/ f_{NL} , Mult, Offset)

For information on this instruction, refer to the CRBasic Help.



¹Analog Ground is the \perp terminal between **VX** and **HI** on the AM25T.

9. Maintenance

Maintain a level of calibration appropriate to the application. Campbell Scientific recommends factory recalibration of the AM25T every five years. Consider the following factors when setting a calibration schedule:

- the importance of the measurements
- how long the multiplexer will be used
- the operating environment
- how the multiplexer will be handled

Appendix A. Importing Short Cut Code Into CRBasic Editor

This tutorial shows:

- How to import a *Short Cut* program into a program editor for additional refinement
- How to import a wiring diagram from *Short Cut* into the comments of a custom program

Short Cut creates files, which can be imported into *CRBasic Editor*. Assuming defaults were used when *Short Cut* was installed, these files reside in the C:\campbellsci\SCWin folder:

- .DEF (wiring and memory usage information)
- .CR6 (CR6-series datalogger code)
- .CR8 (CR800-series datalogger code)
- .CR1 (CR1000 datalogger code)
- .CR3 (CR3000 datalogger code)
- .CR5 (CR5000 datalogger code)
- .CR9 (CR9000(X) datalogger code)

Use the following procedure to import *Short Cut* code and wiring diagram into *CRBasic Editor*.

1. Open *CRBasic Editor*.
2. Click **File** | **Open**. Assuming the default paths were used when *Short Cut* was installed, navigate to C:\CampbellSci\SCWin folder. The file of interest has the .CR6, .CR8, .CR1, .CR3, .CR5., or .CR9 extension. Select the file and click **Open**.
3. Immediately save the file in a folder different from C:\Campbellsci\SCWin, or save the file with a different file name.

NOTE

Once the file is edited with *CRBasic Editor*, *Short Cut* can no longer be used to edit the datalogger program. Change the name of the program file or move it, or *Short Cut* may overwrite it next time it is used.

4. The program can now be edited, saved, and sent to the datalogger.
5. Import wiring information to the program by opening the associated .DEF file. Copy and paste the section beginning with heading “-Wiring for CRXXX-” into the CRBasic program, usually at the head of the file. After pasting, edit the information such that an apostrophe (') begins each line. This character instructs the datalogger compiler to ignore the line when compiling.

Appendix B. Example Program

In this example, 25 type T thermocouples are connected to the AM25T. One **AM25T()** instruction will measure the AM25T's PRT and the thermocouples. This program is written for the CR6 datalogger. Other CRBasic dataloggers are programmed similarly. TABLE B-1 shows the wiring used with the example.

TABLE B-1. Wiring for CR6 Example		
Function	AM25T	Datalogger
+12 Vdc Power	12V	12V
Power Ground	G	G
Analog Ground ¹	⏏	⏏
Clock	CLK	U1
Reset	RES	U2
PRT Excitation	VX	U3
Common High	HI	U5
Common Low	LO	U6
¹ Analog Ground is the ⏏ terminal located between the VX and HI terminals on the AM25T.		

CRBasic Example B-1. CR6 Program Using One Instruction to Measure Both the Reference Temperature and Thermocouples

```

'CR6 Series

'Declare Variables and Units
Public BattV
Public PTemp_C
Public RTempC
Public Temp_C(25)

Units BattV=Volts
Units PTemp_C=Deg C
Units RTempC=Deg C
Units Temp_C=Deg C

'Define Data Tables
DataTable(Dat15sec,True,-1)
  DataInterval(0,15,Sec,10)
  Sample(1,RTempC,FP2)
  Sample(25,Temp_C(1),FP2)
EndTable

DataTable(Dat5Min,True,-1)
  DataInterval(0,5,Min,10)
  Minimum(1,BattV,FP2,False,False)
  Average(1,RTempC,FP2,False)
  Average(25,Temp_C(1),FP2,False)
EndTable

'Main Program

```

```
BeginProg
'Main Scan
Scan(5,Sec,0,0)
'Default CR6 Datalogger Battery Voltage measurement 'BattV'
Battery(BattV)
'Default CR6 Datalogger Wiring Panel Temperature measurement 'PTemp_C'
PanelTemp(PTemp_C,60)
'Type T (copper-constantan) Thermocouple measurements 'Temp_C()' on the AM25T Multiplexer
AM25T(Temp_C()),25,mv200C,1,U5,TypeT,RTempC,U1,U2,U3,True,0,60,1,0)
'Call Data Tables and Store Data
CallTable Dat15sec
CallTable Dat5Min
NextScan
EndProg
```


Campbell Scientific Companies

Campbell Scientific, Inc.

815 West 1800 North
Logan, Utah 84321
UNITED STATES

www.campbellsci.com • info@campbellsci.com

Campbell Scientific Canada Corp.

14532 – 131 Avenue NW
Edmonton AB T5L 4X4
CANADA

www.campbellsci.ca • dataloggers@campbellsci.ca

Campbell Scientific Africa Pty. Ltd.

PO Box 2450
Somerset West 7129
SOUTH AFRICA

www.campbellsci.co.za • cleroux@csafrica.co.za

Campbell Scientific Centro Caribe S.A.

300 N Cementerio, Edificio Breller
Santo Domingo, Heredia 40305
COSTA RICA

www.campbellsci.cc • info@campbellsci.cc

Campbell Scientific Southeast Asia Co., Ltd.

877/22 Nirvana@Work, Rama 9 Road
Suan Luang Subdistrict, Suan Luang District
Bangkok 10250
THAILAND

www.campbellsci.asia • info@campbellsci.asia

Campbell Scientific Ltd.

Campbell Park
80 Hathern Road
Shepshed, Loughborough LE12 9GX
UNITED KINGDOM

www.campbellsci.co.uk • sales@campbellsci.co.uk

Campbell Scientific Australia Pty. Ltd.

PO Box 8108
Garbutt Post Shop QLD 4814
AUSTRALIA

www.campbellsci.com.au • info@campbellsci.com.au

Campbell Scientific Ltd.

3 Avenue de la Division Leclerc
92160 ANTONY
FRANCE

www.campbellsci.fr • info@campbellsci.fr

Campbell Scientific (Beijing) Co., Ltd.

8B16, Floor 8 Tower B, Hanwei Plaza
7 Guanghua Road
Chaoyang, Beijing 100004
P.R. CHINA

www.campbellsci.com • info@campbellsci.com.cn

Campbell Scientific Ltd.

Fahrenheitstraße 13
28359 Bremen
GERMANY

www.campbellsci.de • info@campbellsci.de

Campbell Scientific do Brasil Ltda.

Rua Apinagés, n.br. 2018 — Perdizes
CEP: 01258-00 — São Paulo — SP
BRASIL

www.campbellsci.com.br • vendas@campbellsci.com.br

Campbell Scientific Spain, S. L.

Avda. Pompeu Fabra 7-9, local 1
08024 Barcelona
SPAIN

www.campbellsci.es • info@campbellsci.es

Please visit www.campbellsci.com to obtain contact information for your local US or international representative.