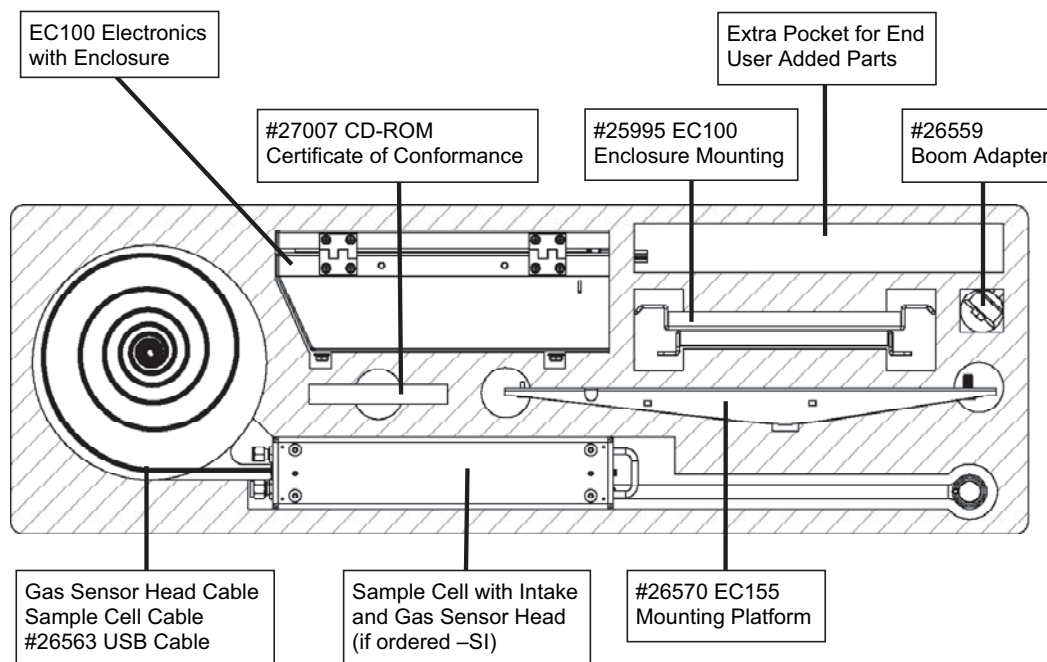


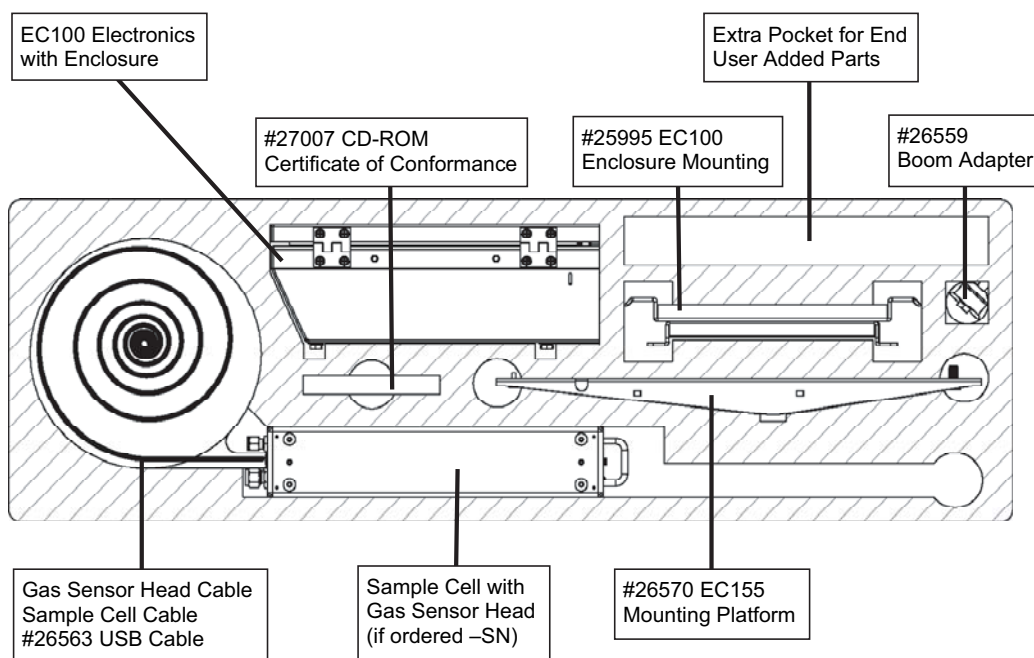
## EC155 Packing Information

The EC155 components are placed in a foam cutout that helps protect them from damage during shipment. The EC155 should look like one of the photographs below, depending on the sample cell option ordered. After unpacking, it is recommended to save the foam cutout as the EC155 components should be placed in the foam cutout whenever the EC155 is transported to another location.

Note: Another box containing the Sonic Head and its components will also be shipped with the EC155 analyzer if Sensing Head Option –SH has been ordered.



**FIGURE 1. EC155 with Sample Cell Option -SI**



**FIGURE 2. EC155 with Sample Cell Option -SN**

