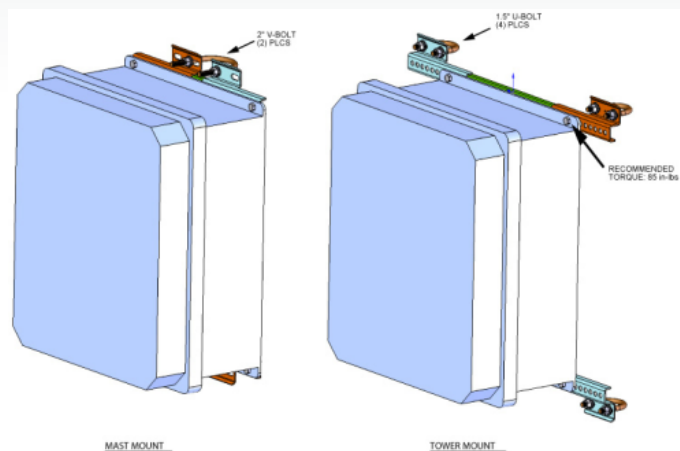


ENC MOUNT

Mast and tower mounting options



Overview

For ENC 10/12, ENC 12/14, ENC 14/16 , or ENC 16/18 Enclosures

Detailed Description

Specifications

Mast Mount: 2" V-Bolt (2) PLCS

Tower Mount: 1.5" U-Bolt (4) PLCS
Recommended torque - 85 in-lbs

For comprehensive details, visit: www.campbellsci.ca/encmount