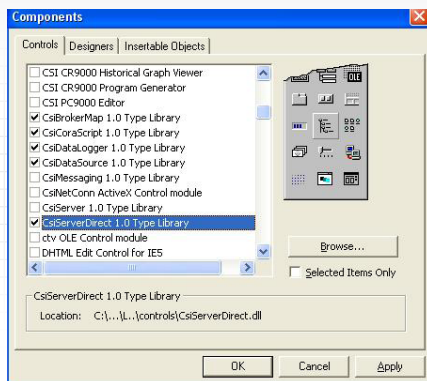


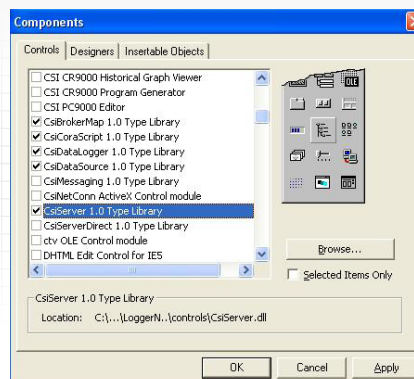


LoggerNet-SDK, LoggerNet Server-SDK

Software Development Kits



LOGGERNET-SDK
Component Screen



LOGGERNET Server-SDK
Component Screen

Overview

LoggerNet-SDK and LoggerNet Server-SDK are flexible and powerful programming tools that allow software developers to create customized applications based on Campbell Scientific's LoggerNet software package. These software development kits include several ActiveX controls (DLLs) that encapsulate fundamental tasks users want to perform with our dataloggers.

LoggerNet-SDK and LoggerNet Server-SDK differ in their communications DLL. LoggerNet-SDK includes a limited LoggerNet Server communications DLL that only allows direct RS-232 and IP port connections with a single datalogger. LoggerNet Server-SDK includes the entire LoggerNet Server communications DLL that supports datalogger networks and any of our telecommunications links.

Specifications

Documentation and Examples Included

- › SDK Beginner's Guide
- › Programmer's Reference Manual
- › CoraScript Commands Reference
- › Visual C++ MFC, VB.NET, and C#.NET examples for each ActiveX control with both source code and compiled executables

Requirements

- › Developer should be familiar with Campbell Scientific's hardware and software.
- › The developer must create all of the clients that will start, stop, and administer the included LoggerNet Server DLL.

ActiveX Controls/Functions Supported

CsBrokerMap

- › Browse the datalogger network to display station and data table information

CsDataLogger

- › Establish connection to a datalogger via the LoggerNet server
- › Check/set the datalogger clock
- › Transfer datalogger programs to and from the datalogger
- › Toggle ports and flags
- › Collect data from a datalogger
- › Set input location variables

CsDataSource

- › Retrieve data from the LoggerNet server cache

CsCoraScript

- › Pass CoraScript commands to the LoggerNet server

CsLogMonitor

- › Access the transaction and communications log of the LoggerNet server

CsServerDirect (LoggerNet-SDK only)

- › Start and stop the included, limited LoggerNet server communications DLL

CsServer (LoggerNet Server-SDK only)

- › Start and stop the included, LoggerNet Server DLL



80 Hathern Road, Shepshed, LE12 9GX | +(0)1509 828888 | sales@campbellsci.co.uk | www.campbellsci.eu
UK | AUSTRALIA | BRAZIL | CANADA | CHINA | COSTA RICA | FRANCE | GERMANY | SOUTH AFRICA | SPAIN | USA

© 2003, 2015
Campbell Scientific
July 1, 2015

More info: +44(0) 1509 828 888

www.campbellsci.eu/loggernet