

4WPB100 and 4WPB1K PRT Bridge Terminal Input Modules

User Guide

6.2.06

Copyright © 2000-2005 Campbell Scientific Inc.
Printed under Licence by Campbell Scientific Ltd.

Guarantee

This equipment is guaranteed against defects in materials and workmanship. This guarantee applies for twelve months from date of delivery. We will repair or replace products which prove to be defective during the guarantee period provided they are returned to us prepaid. The guarantee will not apply to:

- Equipment which has been modified or altered in any way without the written permission of Campbell Scientific
- Batteries
- Any product which has been subjected to misuse, neglect, acts of God or damage in transit.

Campbell Scientific will return guaranteed equipment by surface carrier prepaid. Campbell Scientific will not reimburse the claimant for costs incurred in removing and/or reinstalling equipment. This guarantee and the Company's obligation thereunder is in lieu of all other guarantees, expressed or implied, including those of suitability and fitness for a particular purpose. Campbell Scientific is not liable for consequential damage.

Please inform us before returning equipment and obtain a Repair Reference Number whether the repair is under guarantee or not. Please state the faults as clearly as possible, and if the product is out of the guarantee period it should be accompanied by a purchase order. Quotations for repairs can be given on request.

When returning equipment, the Repair Reference Number must be clearly marked on the outside of the package.

Note that goods sent air freight are subject to Customs clearance fees which Campbell Scientific will charge to customers. In many cases, these charges are greater than the cost of the repair.



Campbell Scientific Ltd,
Campbell Park, 80 Hathern Road,
Shepshed, Loughborough, LE12 9GX, UK
Tel: +44 (0) 1509 601141
Fax: +44 (0) 1509 601091
Email: support@campbellsci.co.uk
www.campbellsci.co.uk

Table of Contents

1. Specifications	1
2. Wiring.....	2
3. PRT in 4-Wire Half Bridge	2
3.1 Excitation Voltage	3
3.2 Calibrating a PRT	3
4. Programming Examples.....	4
4.1 CR10 or CR10X	6
4.2 21X	6
4.3 CR7	6
4.4 CR23X	7
4.5 CR1000	7
4.6 CR3000	7
4.7 CR9000	7

Figures

1. Terminal Input Module	1
2. Circuit Schematic.....	2
3. Wiring for Example Programs.....	2

Tables

1. Excitation Voltage or 100 Ohm PRT in 4WPB100 Based on Maximum Temperature and Input Voltage Range	5
2. Excitation Voltage for 1000 Ohm PRT in 4WPB1000 Based on Maximum Temperature and Input Voltage Range	5

4WPB100 and 4WPB1K PRT Bridge Terminal Input Modules

Terminal input modules connect directly to the datalogger's input terminals to provide completion resistors for resistive bridge measurements, voltage dividers and precision current shunts. The 4WPB100 and 4WPB1K are used to provide completion resistors for 4-wire half bridge measurements of 100 Ω and 1k Ω Platinum Resistance Thermometers (PRTs), respectively.

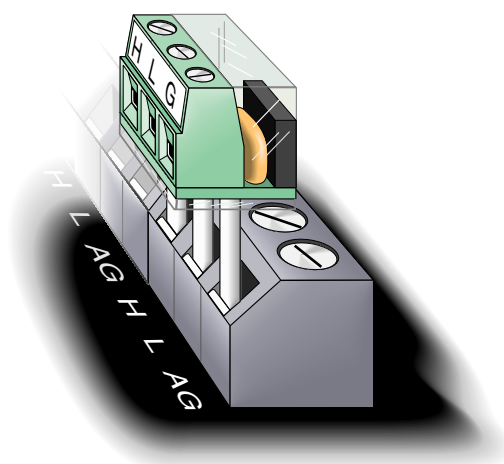


Figure 1 Terminal Input Module

NOTE

If you have a silver CR10 Wiring Panel, you can use a maximum of two Terminal Input Modules at a time. This is because only differential channels 3 and 6 have a ground terminal next to the low side of the differential channel. You may need to bend the TIM leads slightly to fit the TIM into a silver wiring panel.

1. Specifications

Current limiting 10k Ohm Resistor

Tolerance @ 25°C:	±5%
Power rating:	0.25W

Completion Resistor

Tolerance @ 25°C:	±0.01%
Temperature coefficient:	
0 to +60°C	4 ppm/°C
-55 to +125°C	8 ppm/°C
Power rating:	0.25W

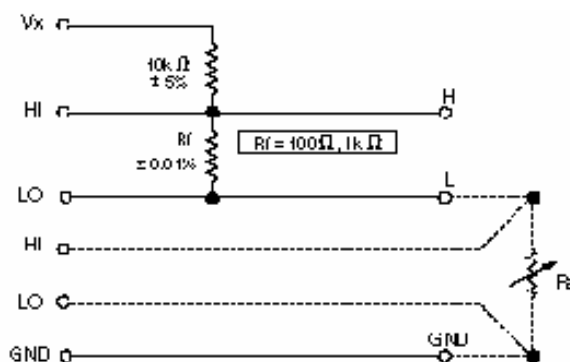


Figure 2 Circuit Schematic

2. Wiring

The Terminal Input Module is connected to the appropriate channel. The dashed lines in Figure 2 indicate the sensor wiring. When making 4-wire half bridge measurements, the 4WPB is connected to a differential channel, and the sense leads from the PRT to the next differential channel. The black excitation wire is connected to the excitation channel. In the following examples the 4WPB is connected to differential channel 1 and the PRT to differential channel 2; the excitation wire is connected to excitation channel 1 (Figure 3).

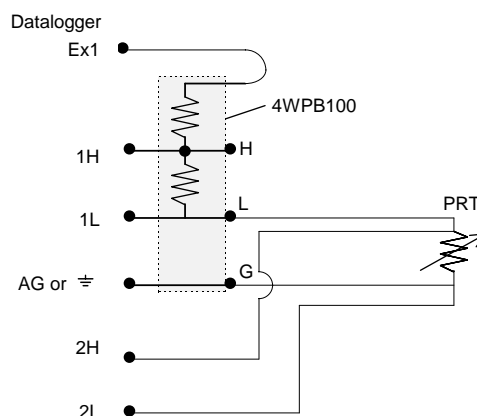


Figure 3 Wiring for Example Programs

3. PRT in 4-Wire Half Bridge

A 4-wire half bridge is the best choice for accuracy where the Platinum Resistance Thermometer (PRT) is separated from other bridge completion resistors by a lead length having more than a few thousandths of an ohm resistance. Four wires to the sensor allow one set of wires to carry the excitation current and a separate set of sense wires that allow the voltage across the PRT to be measured without the effect of any voltage drop in the excitation leads.

Figure 2 shows the circuit used to measure the PRT. The 10kΩ resistor allows the use of a high excitation voltage and low voltage ranges on the measurements. This ensures that noise in the excitation does not have an effect on signal noise and that self heating of the PRT due to excitation is kept to a minimum. Because the fixed resistor (R_f) and the PRT (R_s) have approximately the same resistance, the differential measurement of the voltage drop across the PRT can be made on the same range as the differential measurement of the voltage drop across R_f .

The result of the 4-wire half bridge Instruction is:

$$\frac{V_2}{V_1}$$

the voltage drop is equal to the current (I), times the resistance thus:

$$\frac{V_2}{V_1} = \frac{I \times R_s}{I \times R_f} = \frac{R_s}{R_f}$$

The RTD Instruction (Instruction 16) computes the temperature (°C) for a DIN 43760 standard PRT from the ratio of the PRT resistance at the temperature being measured (R_s) to its resistance at 0°C (R_0). Thus, a multiplier of R_f/R_0 is used with the 4-wire half bridge instruction to obtain the desired intermediate, $R_s/R_0 = (R_s/R_f \times R_f/R_0)$. If R_f and R_0 are equal, the multiplier is 1.

The fixed resistor must be thermally stable. The 4 ppm/°C temperature coefficient would result in a maximum error of 0.05°C at 60°C. The 8ppm/°C temperature coefficient would result in a maximum error of 0.33°C at 125°C. Because the measurement is ratiometric (R_s/R_f) and does not rely on the absolute values of either R_s or R_f , the properties of the 10kΩ resistor do not affect the result.

3.1 Excitation Voltage

The best resolution is obtained when the excitation voltage is large enough to cause the signal voltage to fill the measurement voltage range. The voltage drop across the PRT is equal to the current, I, multiplied by the resistance of the PRT, R_s , and is greatest when R_s is greatest. For example, if it is desired to measure a temperature in the range of -10 to 40°C, the maximum voltage drop will be at 40°C when $R_s=115.54$ ohms. To find the maximum excitation voltage that can be used when the measurement range is ± 25 mV, we assume V_2 equal to 25mV and use Ohm's Law to solve for the resulting current, I.

$$\begin{aligned} I &= 25\text{mV}/R_s = 25\text{mV}/115.54 \text{ ohms} \\ &= 0.216\text{mA} \end{aligned}$$

V_x is equal to I multiplied by the total resistance:

$$V_x = I(R_1 + R_s + R_f) = 2.21\text{V}$$

If the actual resistances were the nominal values, the 25mV range would not be exceeded with $V_x = 2.2\text{V}$. To allow for the tolerances in the actual resistances, it is decided to set V_x equal to 2.1V (e.g. if the 10kΩ resistor is 5% low, then $R_s/(R_1 + R_s + R_f) = 115.54/9715.54$, and V_x must be 2.102V to keep V_s less than 25mV).

3.2 Calibrating a PRT

The greatest source of error in a PRT is likely to be that the resistance at 0°C deviates from the nominal value. Calibrating the PRT in an ice bath can correct this offset and any offset in the fixed resistor in the Terminal Input Module.

The result of the 4-wire half bridge is:

$$\frac{V_2}{V_1} = \frac{I \times R_s}{I \times R_f} = \frac{R_s}{R_f}$$

With the PRT at 0°C, $R_s=R_0$. Thus, the above result becomes R_0/R_f , the reciprocal of the multiplier required to calculate temperature, R_f/R_0 . By making a measurement with the PRT in an ice bath, errors in both R_s and R_0 can be accounted for.

To perform the calibration, connect the PRT to the datalogger and program the datalogger to measure the PRT with the 4-wire half bridge as shown in the example section (multiplier = 1). Place the PRT in an ice bath (at 0°C; $R_s=R_0$). Read the result of the bridge measurement. The reading is R_s/R_f , which is equal to R_0/R_f since $R_s=R_0$. The correct value of the multiplier, R_f/R_0 , is the reciprocal of this reading. For example, if the initial reading is 0.9890, the correct multiplier is: $R_f/R_0 = 1/0.9890 = 1.0111$.

4. Programming Examples

The following examples simply show the two instructions necessary to make the measurement and calculate the temperature. The result of the 4-wire half bridge measurement as shown is R_s/R_0 , the input required for the PRT algorithm to calculate temperature.

NOTE

‘Full Bridge’ is shown as the name for measurement Instruction 9 (used with the CR10/10X, 21X, and CR7). When Instruction 9 is used with the first measurement range not set to the maximum input range, it becomes a 4-wire half bridge measurement.

All the examples are for a 100 ohm PRT in the 4WPB100. The excitation voltages used were chosen with the assumption that the temperature would not exceed 50°C. Tables 1 and 2 list excitation voltage as a function of maximum temperature and the input voltage ranges used with the different dataloggers. Calculation of optimum excitation voltage is discussed in Section 3.1.

Table 1 Excitation Voltage for 100 Ohm PRT in 4WPB100 Based on Maximum Temperature and Input Voltage Range

Max. Temp °C	PRT Resistance Ohms	Excitation Voltage, mV	
		±25mV Input Range (CR10/10X & CR1000)	±50mV Input Range (21X,CR7,CR3000,CR9000)
50	119.4	2035	4070
100	138.5	1758	3516
150	157.31	1551	3101
200	175.84	1390	2780
250	194.07	1262	2523
300	212.02	1157	2314
350	229.67	1070	2140
400	247.04	997	1993
450	264.11	934	1867
500	280.9	879	1759
550	297.39	832	1664
600	313.59	790	1581
650	329.51	753	1507
700	345.13	720	1441
750	360.47	691	1382
800	375.51	664	1328
850	390.26	640	1280

Table 2 Excitation Voltage for 1000 Ohm PRT in 4WPB1000 Based on Maximum Temperature and Input Voltage Range

Max. Temp. °C	PRT Resistance Ohms	Excitation Voltage, mV		
		±200mV Input Range (CR9000 & CR3000)	±250mV Input Range (CR10/10X & CR1000)	±500mV Input Range (21X, CR7)
50	1194.	1959	2448	4897
100	1385.	1716	2145	4291
150	1573.1	1535	1919	3837
200	1758.4	1394	1743	3486
250	1940.7	1282	1603	3205
300	2120.2	1190	1488	2976
350	2296.7	1114	1393	2786
400	2470.4	1050	1313	2625
450	2641.1	995	1244	2488
500	2809.	948	1184	2369
550	2973.9	906	1133	2265
600	3135.9	870	1087	2174
650	3295.1	837	1047	2093
700	3451.3	808	1011	2021
750	3604.7	783	978	1956
800	3755.1	759	949	1898
850	3902.6	738	923	1845

4.1 CR10 or CR10X

```

01:    Full Bridge w/mv Excit (P9)
      1: 1      Repts
      2: 33      ± 25 mV 50 Hz Rejection Ex Range
      3: 33      ± 25 mV 50 Hz Rejection Br Range
      4: 1      DIFF Channel
      5: 1      Excite all reps w/Exchan 1
      6: 2035    mV Excitation
      7: 1      Loc [ Rs_R0      ]
      8: 1.0     Mult
      9: 0      Offset

02:    Temperature RTD (P16)
      1: 1      Repts
      2: 1      R/R0 Loc [ Rs_R0      ]
      3: 2      Loc [ Temp_C      ]
      4: 1      Mult
      5: 0      Offset

```

4.2 21X

```

01:    Full Bridge w/mv Excit (P9)
      1: 1      Repts
      2: 3      ± 50 mV Slow Ex Range
      3: 3      ± 50 mV Slow Br Range
      4: 1      DIFF Channel
      5: 1      Excite all reps w/Exchan 1
      6: 4070    mV Excitation
      7: 1      Loc [ Rs_R0      ]
      8: 1.0     Mult
      9: 0.0     Offset

02:    Temperature RTD (P16)
      1: 1      Repts
      2: 1      R/R0 Loc [ Rs_R0      ]
      3: 2      Loc [ Temp_C      ]
      4: 1.0     Mult
      5: 0.0     Offset

```

4.3 CR7

```

01:    Full Bridge w/mv Excit (P9)
      1: 1      Repts
      2: 4      ± 50 mV Slow Range
      3: 4      ± 50 mV Slow Range
      4: 1      In Card
      5: 1      DIFF Channel
      6: 1      Ex Card
      7: 1      Ex Channel
      8: 1      Meas/Ex
      9: 4070    mV Excitation
     10: 1      Loc [ Rs_R0      ]
     11: 1.0     Mult
     12: 0.0     Offset

```

```

02:    Temperature RTD (P16)
    1: 1      Reps
    2: 1      R/R0 Loc [ Rs_R0      ]
    3: 2      Loc [ Temp_C      ]
    4: 1.0    Mult
    5: 0.0    Offset

```

4.4 CR23X

```

01:    Full Bridge w/mv Excit (P9)
    1: 1      Reps
    2: 32     ± 50 mV 50 Hz Rejection Ex Range
    3: 32     ± 50 mV 50 Hz Rejection Br Range
    4: 1      DIFF Channel
    5: 1      Excite all reps w/Exchan 1
    6: 4070   mV Excitation
    7: 1      Loc [ Rs_R0      ]
    8: 1.0    Mult
    9: 0      Offset

```

```

02:    Temperature RTD (P16)
    1: 1      Reps
    2: 1      R/R0 Loc [ Rs_R0      ]
    3: 2      Loc [ Temp_C      ]
    4: 1      Mult
    5: 0      Offset

```

4.5 CR1000

```

BrHalf4W(Rs_R0,1,mV25,mV25,1,Vx1,1,2035,1,1,0,_50Hz,1.0,0)
PRT(Temp_C,1,Rs_R0,1.0,0)

```

4.6 CR3000

```

BrHalf4W (Rs_R0,1,mV50,mV50,1,Vx1,1,4070,1,1,0,_50Hz,1.0,0)
PRT(Temp_C,1,Rs_R0,1.0,0)

```

4.7 CR9000

```

BrHalf4W(Rs_R0,1,mV50,mV50,1,1,2,1,1,4070,1,1,0,100,1,0)
PRT(Temp_C,1,Rs_R0)

```