



CELL200-Series

4G LTE Cellular Module
For Public Static IP Addresses



Part Number #35035
Revision: 08/2022
CSL I.D - 1288



www.campbellsci.eu/cellular-communications

1. Introduction

NOTE:

This Quick Deploy Guide is a general reference to give the installer an overview of the steps required to make this system operational. The Product Manual is the definitive source for detailed installation instructions and information.

For best results, update to the latest data logger operating system and version of *Device Configuration Utility*.

NOTE:

CR3000, CR1000 and CR800-series users must refer to the CELL200 Product Manual. This Quick Deploy Guide does not apply.

You should have received two Quick Deploy Guides with your CELL200-series module. The one you follow will depend on whether your module was configured with a private dynamic or public static IP address.

The Provisioning Report received with your Cellular Data Service shows whether the module was configured with a private dynamic or public static IP address. See the following figure for an example of a Campbell Scientific Provisioning Report. Other cellular providers should provide similar information.

USE THIS GUIDE if your module has a public static IP address.

**Cellular Data Service
Provisioning Report**

The following device has been provisioned for Campbell Scientific Cellular Data Service.

Sales Order #	12/31/1969	Sales Order Due Date	12/31/1969
Sales Order Date	11/06/2018	Date Provisioned	11/06/2018
Company	Campbell Scientific Inc Marketing	Customer ID	1000
Address	1000 100th St NW	Contact	
City	Blaine	Phone	763-271-9000
State	MN	Email	marketing@campbellsci.com
Country	USA		
Postal Code	55425		
Hardware	CELL210	Datalogger (-40 to +70C)	CELL210 w/4G LTE CAT1 VZ -VS Verizon US Static IP
Model #	CELL210-VS	Static IP	166.167.XX.XX
Serial #	10000000000000000000		
Provision Code	CR300-CELL210-VS	Datalogger (-40 to +70C)	CELL210 w/4G LTE CAT1 VZ -VS Verizon US Static IP
Data Plan	CELLEDA-VS-A250	Campbell Scientific Cellular Data Service	Subscription -VS Verizon US Static IP - A250 250MB/Mon for 1 Yr
Data Limit	250MB	Network	Verizon
ICCID	89012345678901234567	IP Address	166.167.XX.XX
MSISDN	435-555-1234	Konekt Plus Red	IP Address 166.167.XX.XX
IMEI	35735408901234567890123456789012	Redemption Code	
Renewal Due Date	2019-09-22	Service Period	11/15/2018 to 12/14/2019

Figure 1-1. Static IP provisioning report

Additionally, Campbell Scientific cellular modules configured with a public static IP address will have two stickers on the module, as shown in the following figure. One sticker will show the module phone number and data plan. The second sticker will show the static IP address. **USE THIS GUIDE.**

Campbell Scientific cellular modules configured with a private dynamic IP address will have one sticker on the module. It will show the module phone number and data plan. **USE THE OTHER GUIDE.**

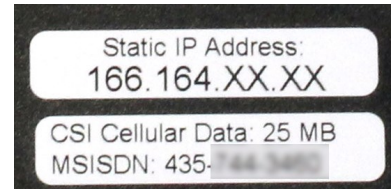


Figure 1-2. Module with public static IP address

2. Campbell Scientific cellular data service

Campbell Scientific can provide subscriptions to cellular service through Verizon, AT&T, T-Mobile, Vodafone, Telstra, and over 600 other providers worldwide. When this cellular service is purchased with the module, the module will come pre-provisioned with the required SIM card and APN. If you have already purchased the CELL200 series, call Campbell Scientific to set up service.

3. Install the SIM card

NOTE:

If you purchased cellular service from Campbell Scientific with the module, it will come with the SIM (Subscriber Identity Module) card already installed. .

NOTE:

Some SIM cards, particularly those purchased in Germany, come with an active personal identification number (PIN). The PIN must be deactivated before proceeding. Often, an easy way to deactivate the PIN is to install the SIM card in a mobile phone and use the device settings.

1. Remove the SIM card cover.
2. Note the location of the notched corner for correct alignment. The gold contact points of the SIM face down when inserting the SIM card as shown in the following figure. **Gently** slide the card into the slot until it stops and locks into place. To eject the SIM card, press it in slightly and release.
3. Replace the SIM card cover.

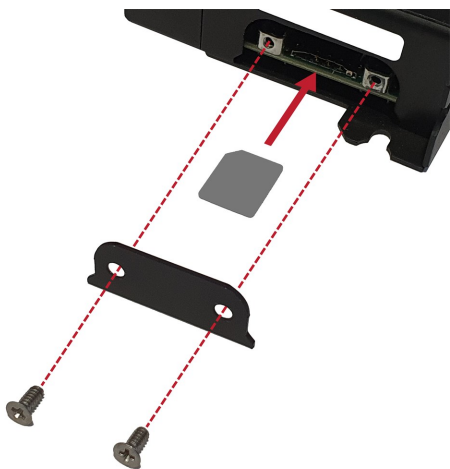


Figure 3-1. SIM card installation

4. Modules using a public static IP

4.1 Set up hardware

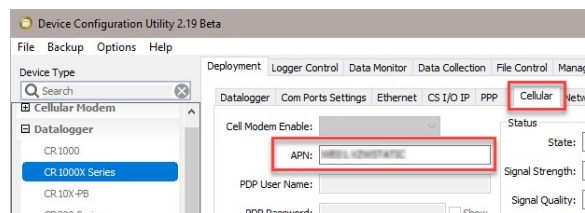
1. Connect the cellular antenna, if it is not already connected. When using a MIMO antenna with multiple cellular connections, connect the primary cable to **Cellular** and the secondary to **Diversity**. If the cables are not marked in this way, they can be connected to either antenna port.
2. Connect your data logger RS-232 or CS I/O port to the CELL200-series module RS-232 or CS I/O port. Ensure

the same port is used for each device, for example RS-232 to RS-232.

3. If not connecting through CS I/O, provide power to the CELL200 series. The data logger provides power through the CS I/O port. USB power is not sufficient to power the CELL200 series; 12 V is required.

4.2 Configure data logger

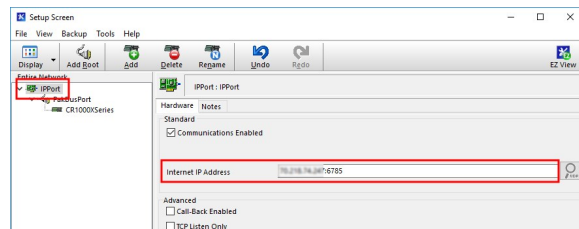
1. Connect to your data logger by using **Device Configuration Utility**.
2. On the **PPP** tab, set **Config/Port Used** to **CS I/O SDC8** or **RS-232**, depending on how you are connected to the data logger.
3. (Optional) On the **PPP** tab, set **User Name** and **Password** if required by your cellular carrier (usually outside of the United States).
4. Verify the **Modem Dial String** setting is blank.
5. If connecting through RS-232, on the **Comport Settings** tab, set **RS232 BaudRate** to **115200 Fixed**.
6. On the **Cellular** tab, enter the **APN** provided by your cellular provider.



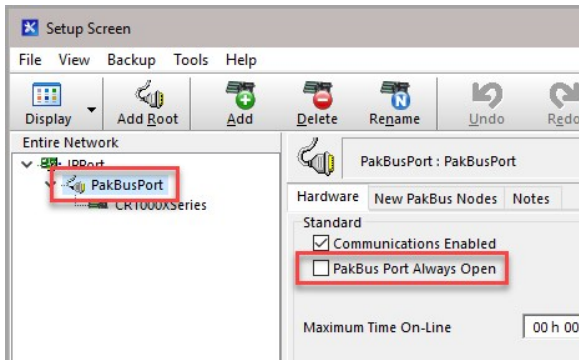
7. Click **Apply** to save the changes.

4.3 Set up LoggerNet

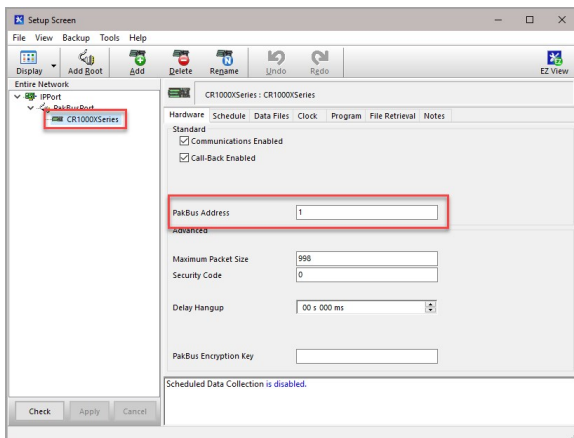
1. Select **Add Root > IPPort**.
2. Select **PakBusPort**.
3. Add a data logger to the **PakBusPort**.
4. Select the **IPPort** in the Network Map. Enter the CELL200 series IP address and port number. The IP address and port number are input in the **Internet IP Address** field separated by a colon. Preceding zeros are not entered in the **Internet IP Address** (for example, 070.218.074.247 is entered as 70.218.74.247). The default port number is 6785.



- For PakBus data loggers, leave the default settings for the **PakBusPort**. **PakBus Port Always Open** should **not** be checked. If a **TCP Password** is used, enter it.



- For PakBus data loggers, select the data logger in the Network Map and set the **PakBus Address** to match that of the data logger (default address in the data logger is 1). If a **PakBus Encryption Key** was entered during data logger setup, also enter it here. Click **Apply** to save the changes.



4.4 Test the connection

Use the **Connect** screen to test the connection. Click on the appropriate station and click **Connect** to initiate a call to the data logger. The data logger must have 12 V power.

TIP:

The connection time is subject to many external factors. It is often less than 30 seconds but could be up to 15 minutes. Be patient.

If the connection is successful, the connectors icon at the bottom of the screen will come together and clock information from the data logger will be displayed in the **Station Date/Time** field.

