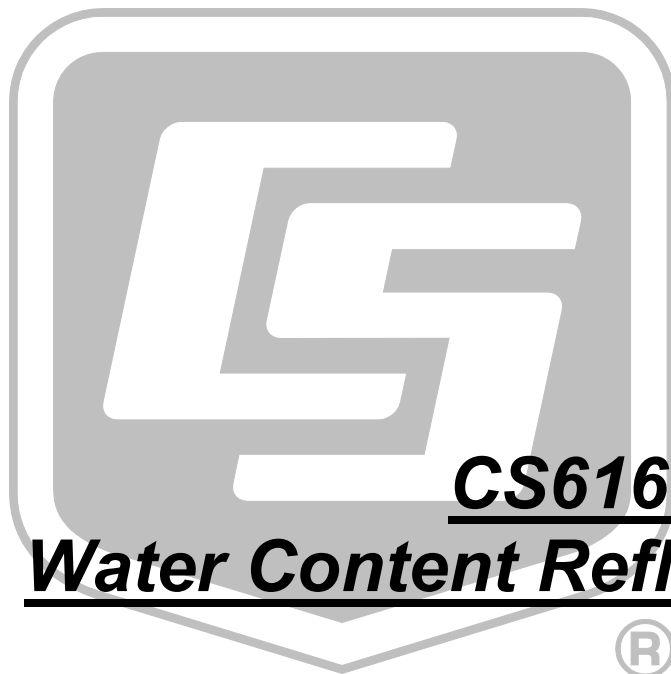


# INSTRUCTION MANUAL



## **CS616 and CS625** **Water Content Reflectometers**

Revision: 2/16



Copyright © 2002-2016  
Campbell Scientific, Inc.



# Guarantee

---

This equipment is guaranteed against defects in materials and workmanship. We will repair or replace products which prove to be defective during the guarantee period as detailed on your invoice, provided they are returned to us prepaid. The guarantee will not apply to:

- Equipment which has been modified or altered in any way without the written permission of Campbell Scientific
- Batteries
- Any product which has been subjected to misuse, neglect, acts of God or damage in transit.

Campbell Scientific will return guaranteed equipment by surface carrier prepaid. Campbell Scientific will not reimburse the claimant for costs incurred in removing and/or reinstalling equipment. This guarantee and the Company's obligation thereunder is in lieu of all other guarantees, expressed or implied, including those of suitability and fitness for a particular purpose. Campbell Scientific is not liable for consequential damage.

Please inform us before returning equipment and obtain a Repair Reference Number whether the repair is under guarantee or not. Please state the faults as clearly as possible, and if the product is out of the guarantee period it should be accompanied by a purchase order. Quotations for repairs can be given on request. It is the policy of Campbell Scientific to protect the health of its employees and provide a safe working environment, in support of this policy a "Declaration of Hazardous Material and Decontamination" form will be issued for completion.

When returning equipment, the Repair Reference Number must be clearly marked on the outside of the package. Complete the "Declaration of Hazardous Material and Decontamination" form and ensure a completed copy is returned with your goods. Please note your Repair may not be processed if you do not include a copy of this form and Campbell Scientific Ltd reserves the right to return goods at the customers' expense.

Note that goods sent air freight are subject to Customs clearance fees which Campbell Scientific will charge to customers. In many cases, these charges are greater than the cost of the repair.



Campbell Scientific Ltd,  
80 Hathern Road,  
Shepshed, Loughborough, LE12 9GX, UK  
Tel: +44 (0) 1509 601141  
Fax: +44 (0) 1509 601091  
Email: [support@campbellsci.co.uk](mailto:support@campbellsci.co.uk)  
[www.campbellsci.co.uk](http://www.campbellsci.co.uk)

# PLEASE READ FIRST

---

## About this manual

Please note that this manual was originally produced by Campbell Scientific Inc. primarily for the North American market. Some spellings, weights and measures may reflect this origin.

Some useful conversion factors:

**Area:** 1 in<sup>2</sup> (square inch) = 645 mm<sup>2</sup>

**Length:** 1 in. (inch) = 25.4 mm  
1 ft (foot) = 304.8 mm  
1 yard = 0.914 m  
1 mile = 1.609 km

**Mass:** 1 oz. (ounce) = 28.35 g  
1 lb (pound weight) = 0.454 kg

**Pressure:** 1 psi (lb/in<sup>2</sup>) = 68.95 mb

**Volume:** 1 UK pint = 568.3 ml  
1 UK gallon = 4.546 litres  
1 US gallon = 3.785 litres

In addition, while most of the information in the manual is correct for all countries, certain information is specific to the North American market and so may not be applicable to European users.

Differences include the U.S standard external power supply details where some information (for example the AC transformer input voltage) will not be applicable for British/European use. *Please note, however, that when a power supply adapter is ordered it will be suitable for use in your country.*

Reference to some radio transmitters, digital cell phones and aerials may also not be applicable according to your locality.

Some brackets, shields and enclosure options, including wiring, are not sold as standard items in the European market; in some cases alternatives are offered. Details of the alternatives will be covered in separate manuals.

Part numbers prefixed with a “#” symbol are special order parts for use with non-EU variants or for special installations. Please quote the full part number with the # when ordering.

## Recycling information



At the end of this product's life it should not be put in commercial or domestic refuse but sent for recycling. Any batteries contained within the product or used during the products life should be removed from the product and also be sent to an appropriate recycling facility.

Campbell Scientific Ltd can advise on the recycling of the equipment and in some cases arrange collection and the correct disposal of it, although charges may apply for some items or territories.

For further advice or support, please contact Campbell Scientific Ltd, or your local agent.



Campbell Scientific Ltd, 80 Hathern Road, Shepshed, Loughborough, LE12 9GX, UK  
Tel: +44 (0) 1509 601141 Fax: +44 (0) 1509 601091  
Email: [support@campbellsci.co.uk](mailto:support@campbellsci.co.uk)  
[www.campbellsci.co.uk](http://www.campbellsci.co.uk)

# Precautions

---

DANGER — MANY HAZARDS ARE ASSOCIATED WITH INSTALLING, USING, MAINTAINING, AND WORKING ON OR AROUND **TRIPODS, TOWERS, AND ANY ATTACHMENTS TO TRIPODS AND TOWERS SUCH AS SENSORS, CROSSARMS, ENCLOSURES, ANTENNAS, ETC.** FAILURE TO PROPERLY AND COMPLETELY ASSEMBLE, INSTALL, OPERATE, USE, AND MAINTAIN TRIPODS, TOWERS, AND ATTACHMENTS, AND FAILURE TO HEED WARNINGS, INCREASES THE RISK OF DEATH, ACCIDENT, SERIOUS INJURY, PROPERTY DAMAGE, AND PRODUCT FAILURE. TAKE ALL REASONABLE PRECAUTIONS TO AVOID THESE HAZARDS. CHECK WITH YOUR ORGANIZATION'S SAFETY COORDINATOR (OR POLICY) FOR PROCEDURES AND REQUIRED PROTECTIVE EQUIPMENT PRIOR TO PERFORMING ANY WORK.

Use tripods, towers, and attachments to tripods and towers only for purposes for which they are designed. Do not exceed design limits. Be familiar and comply with all instructions provided in product manuals. Manuals are available at [www.campbellsci.eu](http://www.campbellsci.eu) or by telephoning +44(0) 1509 828 888 (UK). You are responsible for conformance with governing codes and regulations, including safety regulations, and the integrity and location of structures or land to which towers, tripods, and any attachments are attached. Installation sites should be evaluated and approved by a qualified engineer. If questions or concerns arise regarding installation, use, or maintenance of tripods, towers, attachments, or electrical connections, consult with a licensed and qualified engineer or electrician.

## General

- Prior to performing site or installation work, obtain required approvals and permits. Comply with all governing structure-height regulations, such as those of the FAA in the USA.
- Use only qualified personnel for installation, use, and maintenance of tripods and towers, and any attachments to tripods and towers. The use of licensed and qualified contractors is highly recommended.
- Read all applicable instructions carefully and understand procedures thoroughly before beginning work.
- Wear a **hardhat** and **eye protection**, and take **other appropriate safety precautions** while working on or around tripods and towers.
- **Do not climb** tripods or towers at any time, and prohibit climbing by other persons. Take reasonable precautions to secure tripod and tower sites from trespassers.
- Use only manufacturer recommended parts, materials, and tools.

## Utility and Electrical

- **You can be killed** or sustain serious bodily injury if the tripod, tower, or attachments you are installing, constructing, using, or maintaining, or a tool, stake, or anchor, come in **contact with overhead or underground utility lines**.
- Maintain a distance of at least one-and-one-half times structure height, or 20 feet, or the distance required by applicable law, **whichever is greater**, between overhead utility lines and the structure (tripod, tower, attachments, or tools).
- Prior to performing site or installation work, inform all utility companies and have all underground utilities marked.
- Comply with all electrical codes. Electrical equipment and related grounding devices should be installed by a licensed and qualified electrician.

## Elevated Work and Weather

- Exercise extreme caution when performing elevated work.
- Use appropriate equipment and safety practices.
- During installation and maintenance, keep tower and tripod sites clear of un-trained or non-essential personnel. Take precautions to prevent elevated tools and objects from dropping.
- Do not perform any work in inclement weather, including wind, rain, snow, lightning, etc.

## Maintenance

- Periodically (at least yearly) check for wear and damage, including corrosion, stress cracks, frayed cables, loose cable clamps, cable tightness, etc. and take necessary corrective actions.
- Periodically (at least yearly) check electrical ground connections.

WHILE EVERY ATTEMPT IS MADE TO EMBODY THE HIGHEST DEGREE OF SAFETY IN ALL CAMPBELL SCIENTIFIC PRODUCTS, THE CUSTOMER ASSUMES ALL RISK FROM ANY INJURY RESULTING FROM IMPROPER INSTALLATION, USE, OR MAINTENANCE OF TRIPODS, TOWERS, OR ATTACHMENTS TO TRIPODS AND TOWERS SUCH AS SENSORS, CROSSARMS, ENCLOSURES, ANTENNAS, ETC.



# Table of Contents

---

*PDF viewers: These page numbers refer to the printed version of this document. Use the PDF reader bookmarks tab for links to specific sections.*

<b>1. Introduction .....</b>	<b>1</b>
<b>2. Precautions .....</b>	<b>1</b>
<b>3. Initial Inspection.....</b>	<b>1</b>
<b>4. QuickStart.....</b>	<b>2</b>
<b>5. Overview .....</b>	<b>4</b>
<b>6. Specifications.....</b>	<b>4</b>
6.1 Dimensions .....	5
6.2 Weight.....	5
6.3 Electrical Specifications.....	5
6.4 Operational Details .....	5
<b>7. Installation .....</b>	<b>6</b>
7.1 Orientation .....	6
7.2 Potential Problems with Improper Insertion .....	6
7.3 Wiring .....	7
7.4 Datalogger Programming .....	7
7.4.1 CS616 CRBasic Programming.....	8
7.4.2 CS625 CRBasic Programming.....	8
<b>8. Operation .....</b>	<b>9</b>
8.1 Water Content Reflectometer Method for Measuring Volumetric Water Content.....	9
8.1.1 Response Curves.....	10
8.1.2 Calibration Equations.....	11
8.1.3 Operating Range .....	13
8.1.3.1 Soil Electrical Conductivity .....	13
8.1.3.2 Soil Organic Matter, Clay Content, and Soil Bulk Density.....	14
8.1.4 Error Sources in Water Content Reflectometer Measurement....	14
8.1.4.1 Probe-to-Probe Variability Error.....	14
8.1.4.2 Insertion Error .....	14
8.1.4.3 Signal Attenuation Error .....	15
8.1.5 Temperature Dependence and Correction.....	15
8.2 Water Content Reflectometer User-Calibration.....	16
8.2.1 Signal Attenuation in Conductive Soils and Need for Site-Specific Calibration .....	16
8.2.2 User-Derived Calibration Equation .....	17
8.2.3 Collecting Laboratory Data for Calibration .....	17
8.2.4 Collecting Field Data for Calibration.....	20
8.2.5 Calculations .....	22

<b>9. Maintenance .....</b>	<b>23</b>
<b>10. References.....</b>	<b>23</b>

## **Appendices**

<b>A. Discussion of Soil Water Content.....</b>	<b>A-1</b>
---	------------

<b>B. Importing <i>Short Cut</i> Code Into <i>CRBasic Editor</i> ...</b>	<b>B-1</b>
--	------------

<b>C. Example Programs.....</b>	<b>C-1</b>
---------------------------------	------------

C.1 CS616 Programs.....	C-1
C.1.1 CR1000 Program for Measuring Eight CS616 Probes.....	C-1
C.1.2 CR1000/Multiplexer Program for Measuring 48 CS616 Probes .....	C-3
C.2 CS625 Programs.....	C-5
C.2.1 CR200(X) Program for Measuring Four CS625 Probes .....	C-5
C.2.2 CR200(X) Program with Temperature Correction.....	C-6

## **Figures**

7-1. Water content reflectometer wires.....	7
8-1. CS616 and CS625 linear and quadratic calibrations derived from loam soil.....	10
8-2. CS616 response for different soil types.....	11
8-3. Linear versus quadratic calibration differences.....	12
8-4. Percent volumetric water content error adjusted with temperature correction equation .....	16

## **Tables**

7-1. Datalogger/Reflectometer Wiring. ....	7
8-1. Standard calibration coefficients for linear and quadratic forms.....	12
8-2. Calibration coefficients for sandy clay loam with bulk density 1.6 g cm <sup>-3</sup> and electrical conductivity at saturation 0.4 dS m <sup>-1</sup> for both linear and quadratic forms.....	13
8-3. Calibration coefficients for sandy clay loam with bulk density 1.6 g cm <sup>-3</sup> and electrical conductivity at saturation 0.75 dS m <sup>-1</sup> for both linear and quadratic forms.....	13
C-1. Datalogger Connection for Eight CS616s Example Program .....	C-1
C-2. Wiring for CR1000/Multiplexer Example.....	C-3
C-3. Wiring for CR200(X) Program Measuring Four CS625 Probes .....	C-5
C-4. CS625 Wiring for CR200X Program with Temperature Correction .....	C-6
C-5. 109 Wiring for CR200X Program with Temperature Correction....	C-6

## **CRBasic Examples**

C-1. CR1000 Program for Measuring Eight CS616 Probes .....	C-2
C-2. CR1000/Multiplexer Program for Measuring 48 CS616 Probes.....	C-4
C-3. CR200(X) Program for Measuring Four CS625 Probes.....	C-5
C-4. CR200(X) Program with Temperature Correction.....	C-7



# CS616 and CS625 Water Content Reflectometers

---

## 1. Introduction

The CS616 Water Content Reflectometer is an improved version of the CS615 Water Content Reflectometer. The CS625 is a modified CS616 for use with the CR200(X)-series dataloggers. The difference between the CS616 and the CS625 is the output voltage level.

Both water content reflectometers are designed to measure volumetric water content (VWC) of soils or other porous media. The water content information is derived from the probe sensitivity to the dielectric constant of the medium surrounding the probe rods.

---

**NOTE**

This manual provides information only for CRBasic dataloggers. It is also compatible with several of our retired Edlog dataloggers. For Edlog datalogger support, see an older manual at [www.campbellsci.com/old-manuals](http://www.campbellsci.com/old-manuals) or contact a Campbell Scientific application engineer for assistance.

---

## 2. Precautions

- READ AND UNDERSTAND the *Safety* section at the front of this manual.
- Although the CS616/CS625 is rugged, it should be handled as precision scientific instrument.
- External RF sources can affect CS616/CS625 measurements. Consequently, the CS616/CS625 circuitry should be located away from significant sources of RF such as ac power lines and motors.
- CS616/CS625 probes enabled simultaneously and within approximately 9 inches of each other can cause erratic measurements. If probes must be close to each other, configure the enable lines to the datalogger control ports so that the probes are not enabled simultaneously.

## 3. Initial Inspection

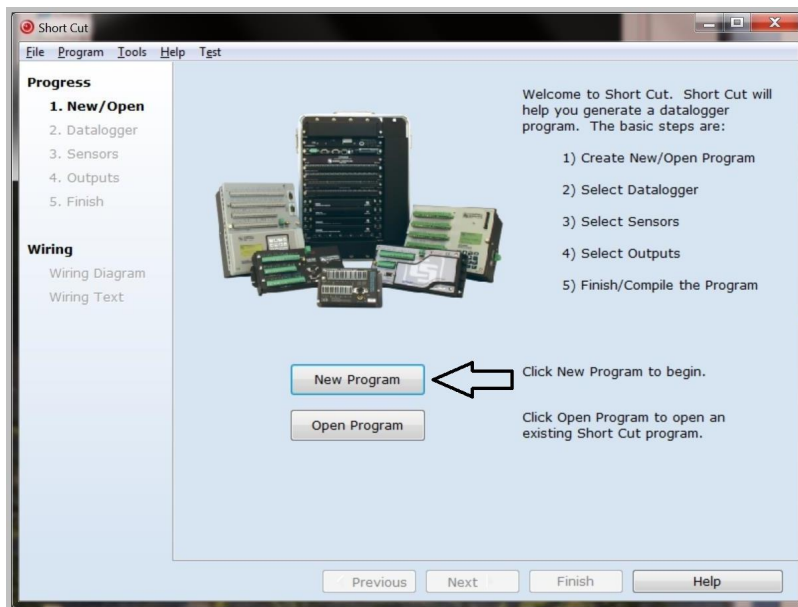
- Upon receipt of the CS616/CS625, inspect the packaging and contents for damage. File damage claims with the shipping company.
- The model number and cable length are printed on a label at the connection end of the cable. Check this information against the shipping documents to ensure the expected product and cable length are received.

## 4. QuickStart

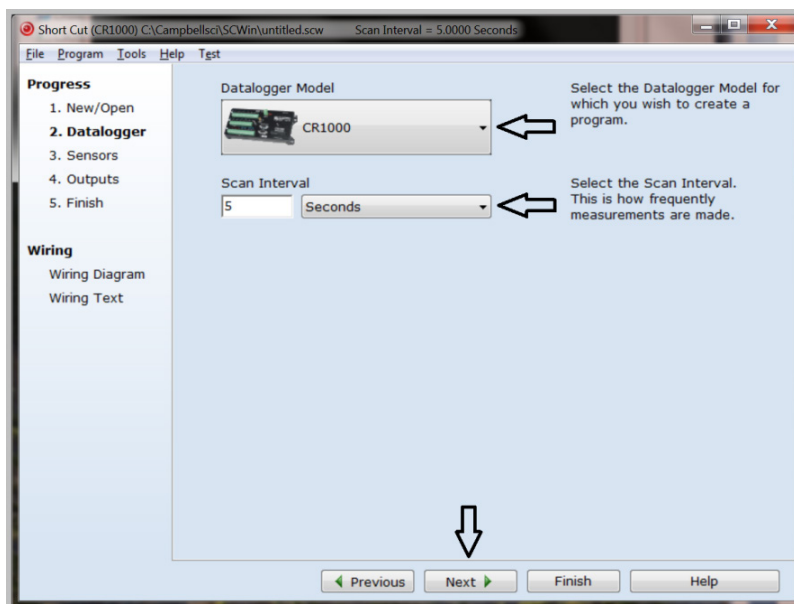
*Short Cut* is an easy way to program your datalogger to measure the CS616 or CS625 probe and assign datalogger wiring terminals. *Short Cut* is available as a download on [www.campbellsci.com](http://www.campbellsci.com) and the *ResourceDVD*. It is included in installations of *LoggerNet*, *PC200W*, *PC400*, or *RTDAQ*.


The following procedure shows using *Short Cut* to program the CS616. The procedure for the CS625 is similar.

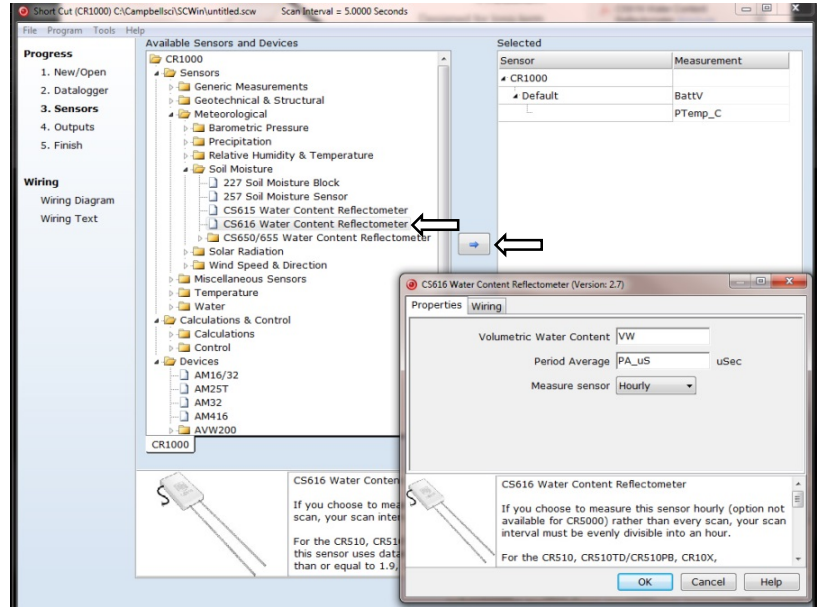
1. Open *Short Cut*. Click **New Program**.



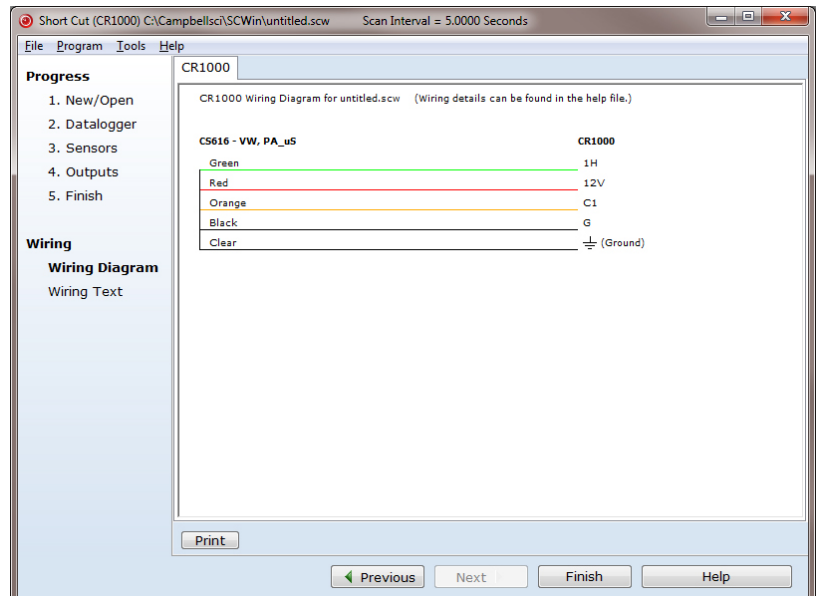
2. Select **Datalogger Model** and **Scan Interval** (default of 5 seconds is OK for most applications). Click **Next**.



3. Under the **Available Sensors and Devices** list, select the **Sensors | Soil Moisture** folder. Select **CS616 Water Content Reflectometer**. Click  to move the selection to the **Selected** device window. It defaults to measuring the sensor hourly. This can be changed by clicking the **Measure Sensor** box and selecting **Every Scan**.



4. After selecting the sensor, click **Wiring Diagram** to see how the sensor is to be wired to the datalogger. The wiring diagram can be printed now or after more sensors are added.



5. Select any other sensors you have, then finish the remaining *Short Cut* steps to complete the program. The remaining steps are outlined in *Short Cut Help*, which is accessed by clicking on **Help | Contents | Programming Steps**.

6. If *LoggerNet*, *PC400*, *RTDAQ*, or *PC200W* is running on your PC, and the PC to datalogger connection is active, you can click **Finish** in *Short Cut* and you will be prompted to send the program just created to the datalogger.
7. If the sensor is connected to the datalogger, as shown in the wiring diagram in step 4, check the output of the sensor in the datalogger support software data display to make sure it is making reasonable measurements.

## 5. Overview

The water content reflectometer consists of two stainless steel rods connected to a printed circuit board. A shielded four-conductor cable is connected to the circuit board to supply power, enable the probe, and monitor the pulse output. The circuit board is encapsulated in epoxy.

High-speed electronic components on the circuit board are configured as a bistable multivibrator. The output of the multivibrator is connected to the probe rods which act as a wave guide. The travel time of the signal on the probe rods depends on the dielectric permittivity of the material surrounding the rods, and the dielectric permittivity depends on the water content. Therefore, the oscillation frequency of the multivibrator is dependent on the water content of the media being measured. Digital circuitry scales the multivibrator output to an appropriate frequency for measurement with a datalogger. The water content reflectometer output is essentially a square wave. The probe output period ranges from about 14 microseconds with rods in air to about 42 microseconds with the rods completely immersed in typical tap water. A calibration equation converts period to volumetric water content.

## 6. Specifications

### Features:

- High accuracy and high precision
- Fast response time
- Designed for long-term, unattended water content monitoring
- Probe rods can be inserted from the surface or buried at any orientation to the surface
- CS616 compatible with Campbell Scientific CRBasic dataloggers: CR6, CR80, CR850, CR1000, CR3000, and CR5000
- CS625 compatible with Campbell Scientific CRBasic dataloggers: CR200X series and CR200 series

**Probe-to-Probe Variability:**  $\pm 0.5\%$  VWC in dry soil,  $\pm 1.5\%$  VWC in typical saturated soil

**Resolution:** better than 0.1% VWC

**Water Content Accuracy:**  $\pm 2.5\%$  VWC using standard calibration with bulk electrical conductivity  $\leq 0.5$  deciSiemen per meter ( $\text{dS m}^{-1}$ ) and bulk density  $\leq 1.55 \text{ g cm}^{-3}$  in measurement range 0% to 50% VWC

**Precision:** better than 0.1% VWC

## 6.1 Dimensions

**Rods:** 300 mm (11.8 in) long, 3.2 mm (0.13 in) diameter, 32 mm (1.3 in) spacing

**Probe Head:** 85 x 63 x 18 mm (3.3 x 2.5 x 0.7 in)

## 6.2 Weight

**Probe (without cable):** 280 g (9.9 oz)

**Cable:** 35 g  $\text{m}^{-1}$  (0.38 oz per ft)

## 6.3 Electrical Specifications

### Output

**CS616:**  $\pm 0.7$  volt square wave with frequency dependent on water content

**CS625:** 0 to 3.3 volt square wave with frequency dependent on water content

**Power:** 65 mA @ 12 Vdc when enabled, 45  $\mu\text{A}$  quiescent

**Power Supply Requirements:** 5 Vdc minimum, 18 Vdc maximum

**Enable Voltage:** 4 Vdc minimum, 18 Vdc maximum

**Maximum Cable Length:** 305 m (1000 ft)

### Electromagnetic Compatibility:

The CS616/CS625 is CE compliant with performance criteria available upon request. RF emissions are below EN55022 limits if the CS616/CS625 is enabled less than 0.6 ms and measurements are made at a 1 Hz (1 per second) or slower frequency. The CS616/CS625 meets EN61326 requirements for protection against electrostatic discharge and surge.

## 6.4 Operational Details

The **accuracy** specification for the volumetric water content measurement using the CS616/CS625 probes is based on laboratory measurements in a variety of soils and over the water content range air dry to saturated. The soils were typically sandy loam and coarser. Silt and clay were present in some of the soils used to characterize accuracy.

**Resolution** is the minimum change in the dielectric permittivity that can reliably be detected by the water content reflectometer. The CS616 or CS625 is typically used to measure soil volumetric water content.

**Precision** describes the repeatability of a measurement. It is determined for the CS616 and CS625 by taking repeated measurements in the same material. The precision of the CS616/CS625 is better than 0.1 % volumetric water content.

### **Soil Properties**

The water content reflectometer operation can be affected when the signal applied to the probe rods is attenuated. The probe will provide a well-behaved response to changing water content, even in attenuating soils or other media, but the response may be different than described by the standard calibration. Consequently, a unique calibration is required. Change in probe response can occur when soil bulk electrical conductivity is greater than  $0.5 \text{ dS m}^{-1}$ . The major contributor to soil electrical conductivity is the presence of free ions in solution from dissolution of soil salts. Soil organic matter and some clays can also attenuate the signal.

## **7. Installation**

### **7.1 Orientation**

The probe rods can be inserted vertically into the soil surface or buried at any orientation to the surface. A probe inserted vertically into a soil surface will give an indication of the water content in the upper 30 cm of soil. The probe can be installed horizontal to the surface to detect the passing of wetting fronts or other vertical water fluxes. A probe installed at an angle of 30 degrees with the surface will give an indication of the water content of the upper 15 cm of soil.

### **7.2 Potential Problems with Improper Insertion**

The method used for probe installation can affect the accuracy of the measurement. The probe rods should be kept as close to parallel as possible when installed to maintain the design wave guide geometry. The sensitivity of this measurement is greater in the regions closest to the rod surface than at distances away from the surface. Probes inserted in a manner which generates air voids around the rods will reduce the measurement accuracy. In most soils, the soil structure will recover from the disturbance during probe insertion.

In some applications, installation can be improved by using the CS650G insertion guide tool. The CS650G is inserted into the soil and then removed. This makes proper installation of the water content reflectometer easier in dense or rocky soils.

## 7.3 Wiring

TABLE 7-1. Datalogger/Reflectometer Wiring.		
Color	Function	Datalogger Connection
red	+12 V	+12 V
green	output	SE analog or universal channel
orange	enable	control port
black	signal ground	$\perp$ or AG
clear	power ground	G

### NOTE

Both the black and clear wires must be grounded as shown in TABLE 7-1.

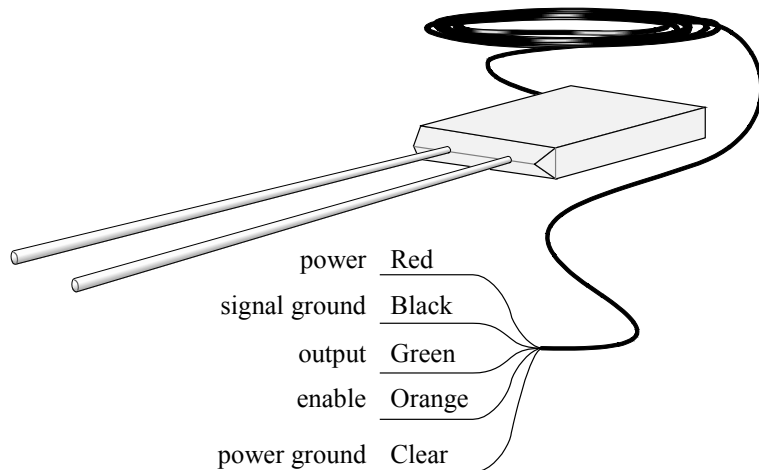


FIGURE 7-1. Water content reflectometer wires

## 7.4 Datalogger Programming

*Short Cut* is the best source for up-to-date datalogger programming code. Programming code is when:

- Creating a program for a new datalogger installation
- Adding sensors to an existing datalogger program

If your data acquisition requirements are simple, you can probably create and maintain a datalogger program exclusively with *Short Cut*. If your data acquisition needs are more complex, the files that *Short Cut* creates are a great source for programming code to start a new program or add to an existing custom program.

### NOTE

*Short Cut* cannot edit programs after they are imported and edited in *CRBasic Editor*.

A *Short Cut* tutorial is available in Section 4, *QuickStart* (p. 2). If you wish to import *Short Cut* code into *CRBasic Editor* to create or add to a customized program, follow the procedure in Appendix B, *Importing Short Cut Code Into CRBasic Editor* (p. B-1). Programming basics for CRBasic dataloggers are provided here. Complete program examples for select CRBasic dataloggers can be found in Appendix C, *Example Programs* (p. C-1). Programming basics and programming examples for Edlog dataloggers are provided at [www.campbellsci.com/old-manuals](http://www.campbellsci.com/old-manuals).

### 7.4.1 CS616 CRBasic Programming

The output of the CS616 is a square wave with amplitude of  $\pm 0.7$  Vdc and a frequency that is dependent on the dielectric constant of the material surrounding the probe rods. The CRBasic instruction **CS616()** is used by the CR6, CR800, CR850, CR1000, CR3000, and CR5000 dataloggers to measure the CS616 output period.

The **CS616()** CRBasic instruction has the following form.

**CS616**(*Dest*, *Reps*, *SEChan*, *Port*, *MeasPerPort*, *Mult*, *Offset*)

**Dest:** The *Dest* parameter is the variable or variable array in which to store the results of the measurement. *Dest* must be dimensioned to at least the number of *Reps*.

**Reps:** The *Reps* parameter is the number of measurements that should be made using this instruction. If *Reps* is greater than 1, *Dest* must be an array dimensioned to the size of *Reps*.

**SEChan:** The *SEChan* parameter is the number of single-ended channels on which to make the first measurement. If the *Reps* parameter is greater than 1, the additional measurements will be made on sequential channels.

**Port:** The *Port* parameter is the control port that will be used to enable the CS616 sensor.

**MeasPerPort:** The *MeasPerPort* parameter is the number of control ports to be used to control the CS616 sensor(s). If *Reps* is set to 4, *MeasPerPort* = 4 will result in the same port being used for all measurements. *MeasPerPort* = 1 will result in four sequential ports being used for the measurements. *MeasPerPort* = 2 will result in one port being used for the first two measurements, and the next port being used for the next two measurements.

**Mult, Offset:** The *Mult* and *Offset* parameters are each a constant, variable, array, or expression by which to scale the results of the measurement.

### 7.4.2 CS625 CRBasic Programming

The output of the CS625 is a square wave with amplitude of 0 to 3.3 Vdc and a frequency that is dependent on the dielectric constant of the material surrounding the probe rods. The CRBasic instruction **PeriodAvg()** is used by the CR200(X) series dataloggers to measure the CS625 output period. The period value is used in the calibration for water content. The period in air is approximately 14.7 microseconds, and the period in saturated soil with porosity 0.4 is approximately 31 microseconds.



The **PeriodAvg()** instruction has the following form.

**PeriodAvg**(*Dest, SEChan, Option, Cycles, Timeout, Port, Mult, Offset*)

**Dest:** The *Dest* parameter is a variable in which to store the results of the measurement.

**SEChan:** The *SEChan* argument is the number of the single-ended channel on which to make the measurement. Valid options are analog channels 1 through 4. The green wire is connected to this channel number.

**Option:** The *Option* parameter specifies whether to output the frequency or the period of the signal. Code 0 is typically used with the CS625 with a multiplier (see below) of 1. Code 0 returns the period of the signal in milliseconds.

**Cycles:** The *Cycles* parameter specifies the number of cycles to average each scan.

**Timeout:** The *Timeout* parameter is the maximum time duration, in milliseconds, that the datalogger will wait for the number of *Cycles* to be measured for the average calculation. An over range value will be stored if the Timeout period is exceeded. A value of 1 is recommended if 10 is used for cycles parameter.

**Port:** The *Port* parameter is the control port or analog channel that will be used to switch power to the CS625 Water Content Reflectometer.

**Mult, Offset:** The *Mult* and *Offset* parameters are each a constant, variable, array, or expression by which to scale the results of the raw measurement. A multiplier value of 1 is recommended.

## 8. Operation

### 8.1 Water Content Reflectometer Method for Measuring Volumetric Water Content

The water content reflectometer method for measuring soil water content is an indirect measurement that is sensitive to the dielectric permittivity of the material surrounding the probe rods. Since water is the only soil constituent that has a high value for dielectric permittivity and is the only component other than air that changes in concentration, a device sensitive to dielectric permittivity can be used to estimate volumetric water content.

The fundamental principle for CS616/CS625 operation is that an electromagnetic pulse will propagate along the probe rods at a velocity that is dependent on the dielectric permittivity of the material surrounding the line. As water content increases, the propagation velocity decreases because polarization of water molecules takes time. The travel time of the applied signal along two times the rod length is essentially measured.

The applied signal travels the length of the probe rods and is reflected from the rod ends traveling back to the probe head. A part of the circuit detects the reflection and triggers the next pulse.

The frequency of pulsing with the probe rods in free air is about 70 MHz. This frequency is scaled down in the water content reflectometer circuit output.

stages to a frequency easily measured by a datalogger. The probe output frequency or period is empirically related to water content using a calibration equation.

### 8.1.1 Response Curves

FIGURE 8-1 shows calibration data collected during laboratory measurements in a loam soil with bulk density  $1.4 \text{ g cm}^{-3}$  and bulk electrical conductivity at saturation of  $0.4 \text{ dS m}^{-1}$ . For this soil, the saturation bulk electrical conductivity of  $0.4 \text{ dS m}^{-1}$  corresponds to laboratory electrical conductivity using extraction methods of about  $2 \text{ dS m}^{-1}$ .

The response is accurately described over the entire water content range by a quadratic equation. However, in the typical water content range of about 10% to about 35% volumetric water content, the response can be described with slightly less accuracy by a linear calibration equation. The manufacturer supplied quadratic provides accuracy of  $\pm 2.5\%$  volumetric water content for soil electrical conductivity  $\leq 0.5 \text{ dS m}^{-1}$  and bulk density  $\leq 1.55 \text{ g cm}^{-3}$  in a measurement range of 0% to 50% VWC.

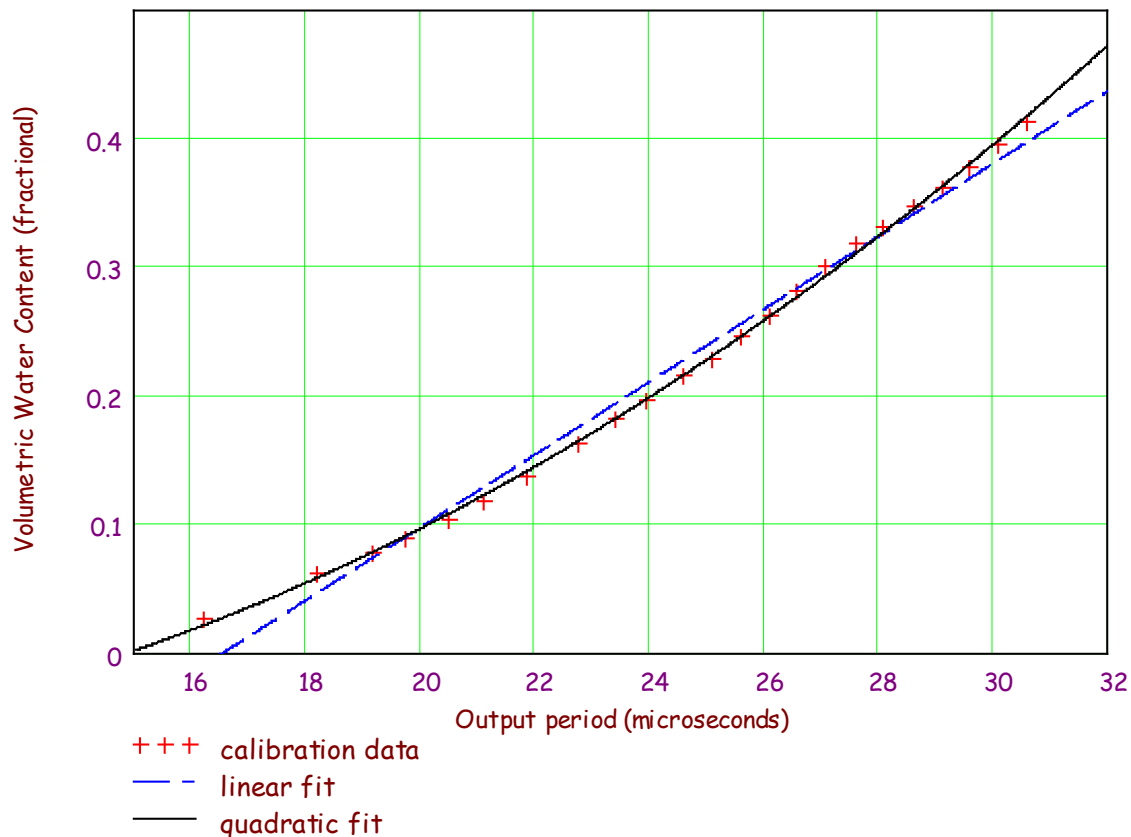


FIGURE 8-1. CS616 and CS625 linear and quadratic calibrations derived from loam soil

FIGURE 8-2 compares the CS616 response in the FIGURE 8-1 loam soil to a higher density sandy clay loam for two different electrical conductivities. The

bulk density for both sandy clay loam soils is  $1.6 \text{ g cm}^{-3}$ . The electrical conductivity at saturation for the sandy clay loam labeled *compacted soil* is  $0.4 \text{ dS m}^{-1}$ . The *compacted soil, high EC* had an electrical conductivity at saturation of  $0.75 \text{ dS m}^{-1}$ . The CS625 response is similar.

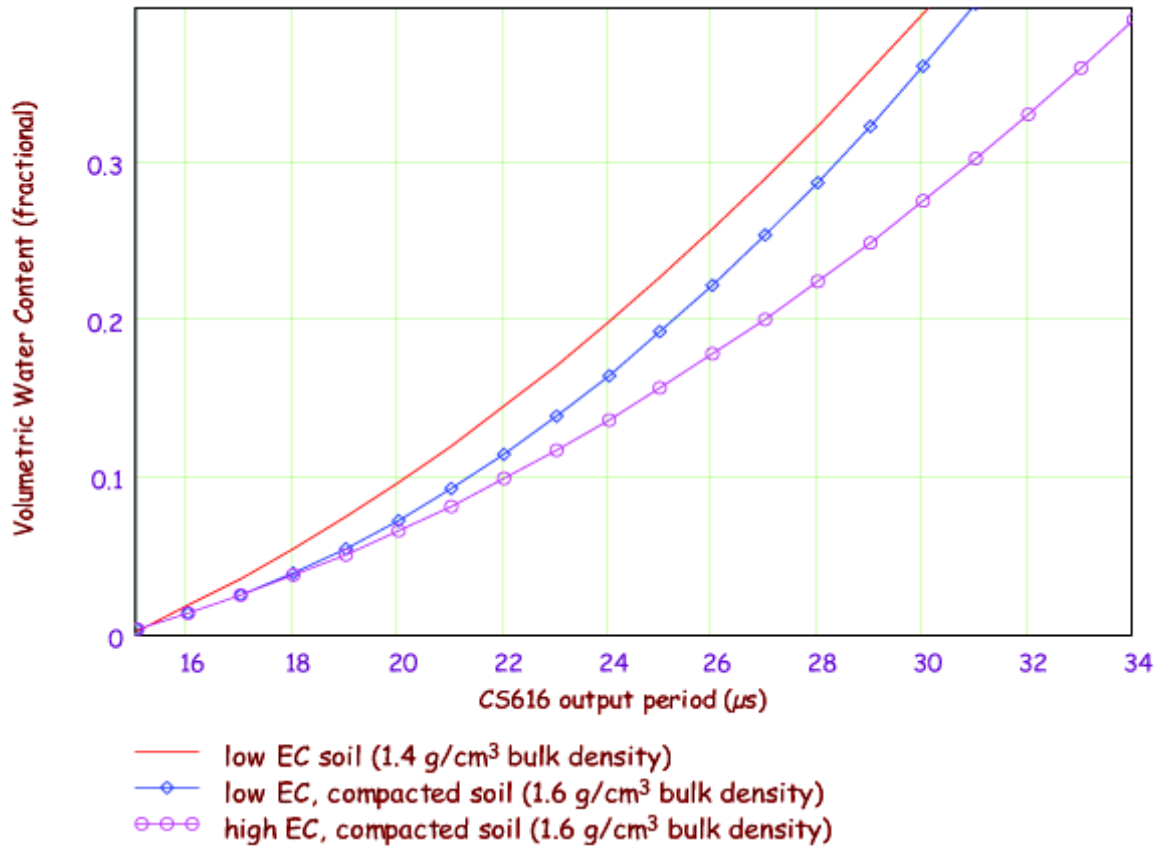


FIGURE 8-2. CS616 response for different soil types

The *compacted soil* response shows the effect of compaction and high clay content. The signal attenuation caused by compaction or high clay content causes an offset in the response as shown by the near-parallel curves at water contents above 10%. This is the effect of attenuation by the solid phase.

The effect of increased electrical conductivity for the same soil is shown by the response curve *high EC, compacted soil*. Higher electrical conductivity causes a decrease in the slope of the response curve. This is the effect of attenuation by the solution phase.

### 8.1.2 Calibration Equations

TABLE 8-1 lists the calibration coefficients derived in the Campbell Scientific soils laboratory. Both linear and quadratic forms are presented. The choice of linear or quadratic forms depends on the expected range of water content and accuracy requirements. These coefficients should provide accurate volumetric water content in mineral soils with bulk electrical conductivity less than  $0.5 \text{ dS m}^{-1}$ , bulk density less than  $1.55 \text{ g cm}^{-3}$ , and clay content less than 30%.

TABLE 8-1. Standard calibration coefficients for linear and quadratic forms				
Linear		Quadratic		
C0	C1	C0	C1	C2
-0.4677	0.0283	-0.0663	-0.0063	0.0007

The linear equation is

$$\text{VWC} = -0.4677 + 0.0283 \times \text{period}$$

The quadratic equation is

$$\text{VWC} = -0.0663 - 0.0063 \times \text{period} + 0.0007 \times \text{period}^2$$

Period is in microseconds. The result of both calibration equations is volumetric water content on a fractional basis. Multiply by 100 to express in percent volumetric water content.

FIGURE 8-3 shows the difference between the linear and the quadratic calibration forms over the typical range. A CS616/CS625 output period of 16 microseconds is about 1.2% VWC and 32 microseconds is 44.9%. The linear calibration is within  $\pm 2.7\%$  VWC of the quadratic. The linear calibration underestimates water content at the wet and dry ends of the range and overestimates it by up to about 2.6 % VWC at about 20% VWC.

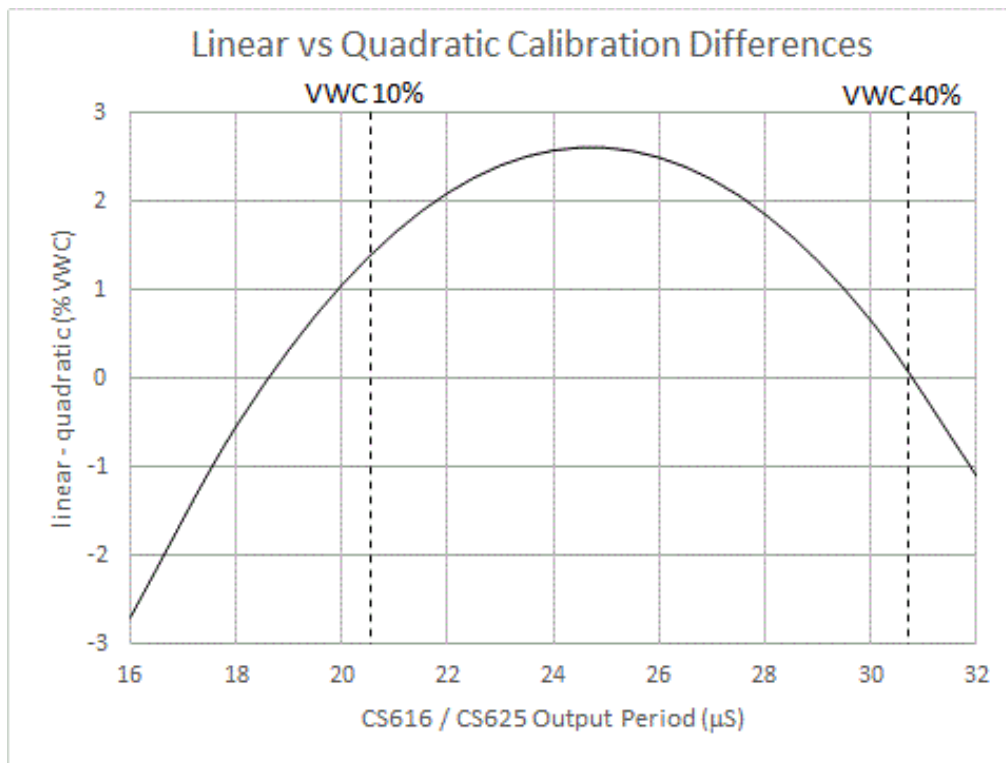


FIGURE 8-3. Linear versus quadratic calibration differences

The linear and quadratic coefficients for the sandy clay loam data in FIGURE 8-3 follow and can be used in similar soils.

<b>TABLE 8-2. Calibration coefficients for sandy clay loam with bulk density 1.6 g cm<sup>-3</sup> and electrical conductivity at saturation 0.4 dS m<sup>-1</sup> for both linear and quadratic forms.</b>				
<b>Linear</b>		<b>Quadratic</b>		
<b>C0</b>	<b>C1</b>	<b>C0</b>	<b>C1</b>	<b>C2</b>
-0.6200	0.0329	0.0950	-0.0211	0.0010

<b>TABLE 8-3. Calibration coefficients for sandy clay loam with bulk density 1.6 g cm<sup>-3</sup> and electrical conductivity at saturation 0.75 dS m<sup>-1</sup> for both linear and quadratic forms.</b>				
<b>Linear</b>		<b>Quadratic</b>		
<b>C0</b>	<b>C1</b>	<b>C0</b>	<b>C1</b>	<b>C2</b>
-0.4470	0.0254	-0.0180	-0.0070	0.0006

### 8.1.3 Operating Range

#### 8.1.3.1 Soil Electrical Conductivity

The quality of soil water measurements which apply electromagnetic fields to wave guides is affected by soil electrical conductivity. The propagation of electromagnetic fields in the configuration of the CS616/CS625 is predominantly affected by changing dielectric constant due to changing water content, but it is also affected by electrical conductivity. Free ions in soil solution provide electrical conduction paths which result in attenuation of the signal applied to the waveguides. This attenuation both reduces the amplitude of the high-frequency signal on the probe rods and reduces the bandwidth. The attenuation reduces oscillation frequency at a given water content because it takes a longer time to reach the oscillator trip threshold.

It is important to distinguish between soil bulk electrical conductivity and soil solution electrical conductivity. Soil solution electrical conductivity refers to the conductivity of the solution phase of soil. Soil solution electrical conductivity,  $\sigma_{\text{solution}}$  can be determined in the laboratory using extraction methods to separate the solution from the solid and then measuring the electrical conductivity of the extracted solution.

The relationship between solution and bulk electrical conductivity can be described by (Rhoades et al., 1976)

$$\sigma_{\text{bulk}} = \sigma_{\text{solution}} \theta_v T + \sigma_{\text{solid}}$$

with  $\sigma_{\text{bulk}}$  being the electrical conductivity of the bulk soil;  $\sigma_{\text{solution}}$ , the soil solution;  $\sigma_{\text{solid}}$ , the solid constituents;  $\theta_v$ , the volumetric water content; and  $T$ , a soil-specific transmission coefficient intended to account for the tortuosity of the flow path as water content changes. See Rhoades et al., 1989 for a form of this equation which accounts for mobile and immobile water. This publication

also discusses soil properties related to CS616/CS625 operation such as clay content and compaction. The above equation is presented here to show the relationship between soil solution electrical conductivity and soil bulk electrical conductivity.

Most expressions of soil electrical conductivity are given in terms of solution conductivity or electrical conductivity from extract since it is constant for a soil. Bulk electrical conductivity increases with water content so comparison of the electrical conductivity of different soils must be at same water content. Discussion of the effects of soil electrical conductivity on CS616/CS625 performance will be on a soil solution or extract basis unless stated otherwise.

When soil solution electrical conductivity values exceed  $2 \text{ dS m}^{-1}$ , the response of the CS616/CS625 output begins to change. The slope decreases with increasing electrical conductivity. The probe will still respond to water content changes with good stability, but the calibration will have to be modified; see Section 8.2, *Water Content Reflectometer User-Calibration (p. 16)*. At electrical conductivity values greater than  $5 \text{ dS m}^{-1}$ , the probe output can become unstable.

#### **8.1.3.2 Soil Organic Matter, Clay Content, and Soil Bulk Density**

The amount of organic matter and clay in a soil can alter the response of dielectric-dependent methods to changes in water content. This is apparent when mechanistic models are used to describe this measurement methodology.

The electromagnetic energy introduced by the probe acts to re-orientate or polarize the water molecules. If other forces are acting on the polar water molecules, the force exerted by the applied signal will be less likely to polarize the molecules. This has the net effect of ‘hiding’ some of the water from the probe. Additionally, some clays absorb water interstitially and thus inhibit polarization by the applied field.

Organic matter and some clays are highly polar. These solid constituents can affect CS616/CS625 response to water content change and require specific calibration. This affect is opposite to that of the ‘hiding’ effect. It would be convenient if the calibration of water content to CS616/CS625 output period could be adjusted according to some parameter of the soil which reflects the character of the signal attenuation. However, such a parameter has not been identified.

The response of the water content reflectometer to changing water content has been shown to change for some soils when bulk density exceeds  $1.5 \text{ g cm}^{-3}$ . The response to changing water content is still well behaved, but the slope will decrease with increasing bulk density.

### **8.1.4 Error Sources in Water Content Reflectometer Measurement**

#### **8.1.4.1 Probe-to-Probe Variability Error**

All manufactured CS616s/CS625s are checked in standard media. The limits for probe response in the standard media ensure accuracy of  $\pm 2\%$  volumetric water content.

#### **8.1.4.2 Insertion Error**

The method used for probe insertion can affect the accuracy of the measurement. The probe rods should be kept as close to parallel as possible

when inserted to maintain the design wave guide geometry. The sensitivity of this measurement is greater in the regions closest to the rod surface than at distances away from the surface. Probes inserted in a manner that generates air voids around the rods will indicate lower water content than actual. In some applications, installation can be improved by using insertion guides or a pilot tool. Campbell Scientific offers the CS650G insertion tool.

#### 8.1.4.3 Signal Attenuation Error

Section 8.1, *Water Content Reflectometer Method for Measuring Volumetric Water Content* (p. 9), presents a detailed description of CS616/CS625 operation. In summary, the CS616/CS625 is primarily sensitive to the dielectric permittivity of the material surrounding the probe rods. The propagation of electromagnetic energy along the probe rods depends on the dielectric properties of the medium. When the reflection of the applied signal from the end of the rods is detected by the CS616/CS625 circuit, another pulse is applied. The time between pulses depends on the propagation time, and the associated period is empirically related to volumetric water content.

The applied signal is subject to attenuation from losses in the medium being measured. While this does not directly affect propagation time, it causes delays in detection of the reflected signal. Attenuation of the signal will occur if there are free ions in soil solution, polar solid constituents such as organic matter or some clay, or conductive mineral constituents.

The general calibration equation for the CS616/CS625 will provide good results with attenuation equivalent to about  $0.5 \text{ dS m}^{-1}$  bulk electrical conductivity. Between  $0.5 \text{ dS m}^{-1}$  and  $5 \text{ dS m}^{-1}$ , the CS616/CS625 will continue to give a well-behaved response to changes in water content but a soil specific calibration is required. See Section 8.2, *Water Content Reflectometer User-Calibration* (p. 16), for calibration information.

#### 8.1.5 Temperature Dependence and Correction

The error in measured volumetric water content caused by the temperature dependence of the CS616/CS625 is shown in FIGURE 8-4. The magnitude of the temperature sensitivity changes with water content. Laboratory measurements were performed at various water contents and over the temperature range from 10 to 40 °C to derive a temperature correction for probe output period. The following equation can be used to correct the CS616/CS625 output period,  $\tau_{\text{uncorrected}}$ , to 20 °C knowing the soil temperature,  $T_{\text{soil}}$ . See Appendix C.2.2, *CR200(X) Program with Temperature Correction* (p. C-6). The temperature correction assumes that both the water content and temperature do not vary over the length of the probes rods.

$$\tau_{\text{corrected}}(T_{\text{soil}}) = \tau_{\text{uncorrected}} + (20 - T_{\text{soil}}) \times (0.526 - 0.052 \times \tau_{\text{uncorrected}} + 0.00136 \times \tau_{\text{uncorrected}}^2)$$

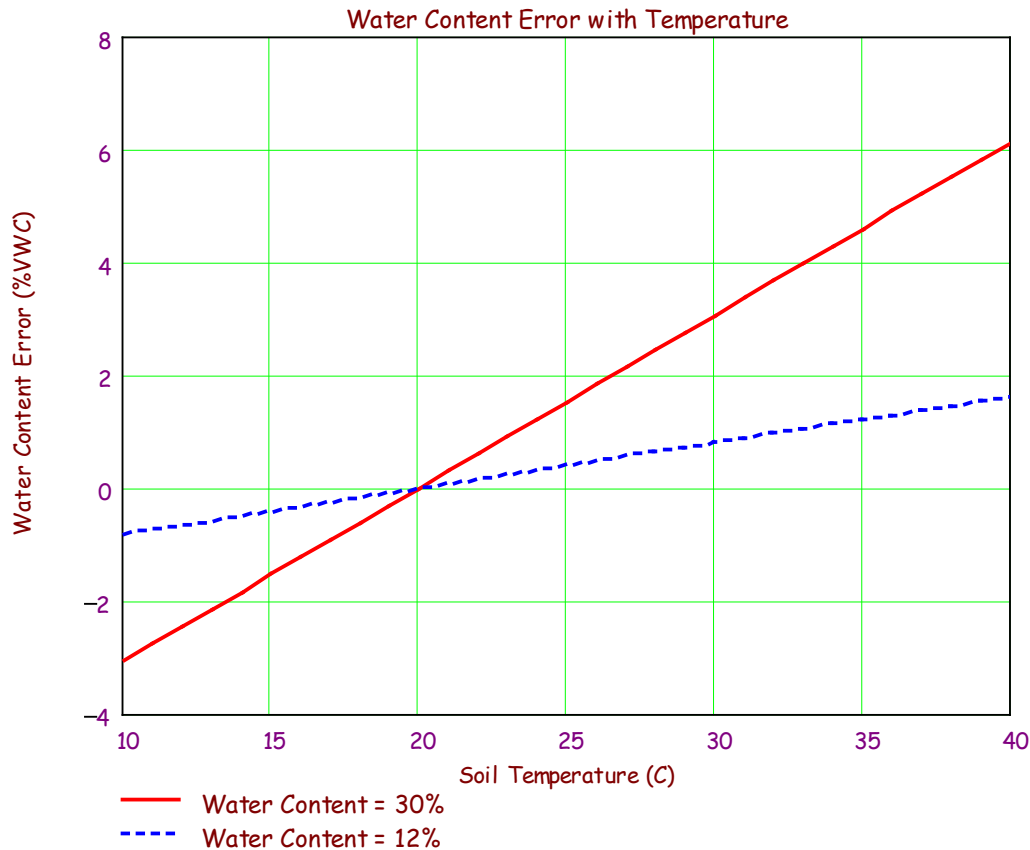


FIGURE 8-4. Percent volumetric water content error adjusted with temperature correction equation

## 8.2 Water Content Reflectometer User-Calibration

### 8.2.1 Signal Attenuation in Conductive Soils and Need for Site-Specific Calibration

A shift in water content reflectometer response results if the applied signal is attenuated significantly. There is a voltage potential between the probe rods when a pulse is applied to them. If the material between the rods is electrically conductive, a path for current flow exists and the applied signal is attenuated. Since the parallel rod design in soil is inherently a lossy medium and attenuation is frequency dependent, both the amplitude of the reflection and the rise-time or bandwidth are affected. Instead of a relatively short rise-time return pulse, the rise-time is greater and the amplitude is less.

The reflected signal must exceed a set amplitude before the next pulse is triggered. Reflections that are attenuated and have longer rise-times will take longer to be detected and trigger the next pulse leading to decreased frequency or increased period in conductive materials.

Some clays are very polar and/or conductive and will also attenuate the applied signal. Additionally, if the clayey soil is compacted, increased bulk density, the conductivity is increased and the response is affected.



Given the water content reflectometer response to changing water content in attenuating media changes as described above, the accuracy of the volumetric water content measurement can be optimized by characterizing the probe response in the specific medium to be measured. The result is a specific calibration equation for a particular medium.

The precision and the resolution of the water content reflectometer measurement are not affected by attenuating media. Both precision and resolution are better than 0.1% volumetric water content.

### 8.2.2 User-Derived Calibration Equation

The probe output response to changing water content is well described by a quadratic equation, and, in many applications, a linear calibration gives required accuracy.

Quadratic form:

$$\theta_v(\tau) = C_0 + C_1 \times \tau + C_2 \times \tau^2$$

with  $\theta_v$ , the volumetric water content ( $\text{m}^3 \text{m}^{-3}$ );  $\tau$ , the CS616/CS625 period (microseconds); and  $C_n$ , the calibration coefficient. The standard calibration coefficients are derived from factory laboratory measurements using curve fitting of known volumetric water content to probe output period.

Linear form:

$$\theta_v(\tau) = C_0 + C_1 \times \tau$$

with  $\theta_v$ , the volumetric water content ( $\text{m}^3 \text{m}^{-3}$ );  $\tau$ , the water content reflectometer period (microseconds);  $C_0$ , the intercept; and  $C_1$ , the slope.

Two data points from careful measurements can be enough to derive a linear calibration. A minimum of 3 data points is needed for a quadratic. With 3 evenly spaced water contents covering the expected range, the middle water content data point will indicate whether a linear or quadratic calibration equation is needed.

#### NOTE

The calibration function describing the CS616/CS625 response to changing water content is always concave up. If calibration data suggests a different shape, there may be a problem with the data or method.

### 8.2.3 Collecting Laboratory Data for Calibration

Water content reflectometer data needed for CS616/CS625 calibration are the CS616/CS625 output period (microseconds) and an independently determined volumetric water content. From this data, the probe's response to changing water content can be described by a quadratic calibration equation of the form

$$\theta_v(\tau) = C_0 + C_1 \times \tau + C_2 \times \tau^2$$

with  $\theta_v$  being the volumetric water content ( $\text{m}^3 \text{m}^{-3}$ );  $\tau$ , the CS616 period (microseconds); and  $C_n$ , the calibration coefficient ( $n = 0..2$ ).

The linear form is

$$\theta_v(\tau) = C_0 + C_1 * \tau$$

with  $\theta_v$ , the volumetric water content ( $\text{m}^3 \text{m}^{-3}$ );  $\tau$ , the CS616 period (microseconds);  $C_0$ , the intercept; and  $C_1$ , the slope.

Required equipment:

1. CS616/CS625 connected to datalogger programmed to measure output period
2. Cylindrical sampling devices to determine sample volume for bulk density; for example, copper tubing of diameter  $\geq 1$  inch and length about 2 inches
3. Containers and scale to measure soil sample weight
4. Oven to dry samples (microwave oven can also be used)

The calibration coefficients are derived from a curve fit of known water content and probe output period. The number of data sets needed to derive a calibration depends on whether the linear or quadratic form is being used and the accuracy requirement. Consider the expected range of soil water content while viewing FIGURE 8-1 and FIGURE 8-2. If the expected response is nearly linear, fewer laboratory measurements are needed to derive the calibration. A linear response is best described by data taken near the driest and wettest expected water contents.

The measurement sensitive volume around the probe rods must be completely occupied by the calibration soil. Only soil should be in the region within 5 cm of the rod surface. The probe rods can be buried in a tray of soil that is dry or nearly dry. The soil will be homogeneous around the probe rods if it is poured around the rods while dry. Also, a 10 cm diameter PVC pipe with length about 35 cm can be closed at one end and used as the container.

It is important that the bulk density of the soil used for calibration be similar to the bulk density of the undisturbed soil. Using dry soil without compaction will give a typical bulk density,  $1.1 - 1.4 \text{ g cm}^{-3}$ . This is especially important when bulk density is greater than  $1.55 \text{ g cm}^{-3}$ . Compaction of the calibration soil to similar bulk density may be necessary.

The typically used method for packing a container of soil to uniform bulk density is to roughly separate the soil into three or more equal portions and add one portion to the container with compaction. Evenly place the first loose soil layer in the bottom of the container. Compact by tamping the surface to a level in the container that is correct for the target bulk density. Repeat for the remaining layers. Prior to placing successive layers, scarify the top of the existing compacted layer.

The container to hold the soil during calibration should be large enough that the rods of the probe are no closer than about 4 inches from any container surface.

Pack the container as uniformly as possible in bulk density with relatively dry soil (volumetric water content <10%).

Probe rods can be buried in a tray or inserted into a column. When using a column, insert the rods carefully through surface until rods are completely surrounded by soil. Movement of rods from side-to-side during insertion can form air voids around rod surface and lead to measurement error.

Collect the probe output period. Repeat previous step and this step 3 or 4 times.

Determine volumetric water content by subsampling soil column after removing probe or using weight of column. If subsampling is used, remove soil from column and remix with samples used for water content measurement. Repack column.

Water can then be added to the top of the container. It must be allowed to equilibrate. Cover the container during equilibration to prevent evaporation. The time required for equilibration depends on the amount of water added and the hydraulic properties of the soil. Equilibration can be verified by frequently observing the CS616/CS625 period output. When period is constant, equilibration is achieved. Collect a set of calibration data values and repeat the water addition procedure again if needed.

With soil at equilibrium, record the CS616/CS625 period value.

Take subsamples of the soil using containers of known volume. This is necessary for measurement of bulk density. Copper tubing of diameter  $\geq 1$  inch and length about 2 inches works well. The tubes can be pressed into the soil surface.

It is good to take replicate samples. Three carefully handled samples will provide good results.

The sample tubes should be pushed evenly into the soil. Remove the tube and sample and gently trim the ends of excess soil. Remove excess soil from outside of tube.

Remove all the soil from tube to a tray or container of known weight that can be put in oven or microwave. Weigh and record the wet soil weight.

Water is removed from the sample by heating with oven or microwave. Oven drying requires 24 hours at 105 °C. Microwave drying typically takes 20 minutes depending on microwave power and sample water content. ASTM Method D4643-93 requires heating in microwave for 3 minutes, cooling in desiccator then weighing and repeating this process until weigh is constant.

Gravimetric water content is calculated after the container weight is accounted for.

$$\theta_g = \frac{m_{\text{wet}} - m_{\text{dry}}}{m_{\text{dry}}}$$

For the bulk density

$$\rho_{\text{bulk}} = \frac{m_{\text{dry}}}{\text{volume}_{\text{cylinder}}}$$

the dry weigh of the sample is divided by the sample tube volume.

The volumetric water content is the product of the gravimetric water content and the bulk density

$$\theta_v = \theta_g \times \rho_{\text{bulk}}$$

The average water content for the replicates and the recorded CS616/CS625 period are one datum pair to be used for the calibration curve fit.

## 8.2.4 Collecting Field Data for Calibration

Required equipment

1. CS616/CS625 connected to datalogger programmed to measure probe output period
2. Cylindrical sampling devices to determine sample volume for bulk density such as copper tubing of diameter  $\geq 1$  inch and length about 2 inches
3. Containers and scale to measure soil sample weight
4. Oven to dry samples (microwave oven can also be used)

Data needed for CS616/CS625 calibration are the CS616/CS625 output period (microseconds) and an independently determined volumetric water content. From this data, the probe response to changing water content can be described by a quadratic calibration equation of the form

$$\theta_v(\tau) = C_0 + C_1 \times \tau + C_2 \times \tau^2$$

with  $\theta_v$  being the volumetric water content ( $\text{m}^3 \text{m}^{-3}$ );  $\tau$ , the CS616/CS625 period (microseconds); and  $C_n$ , the calibration coefficient ( $n = 0..2$ ).

The linear form is

$$\theta_v(\tau) = C_0 + C_1 \times \tau$$

with  $\theta_v$ , the volumetric water content ( $\text{m}^3 \text{m}^{-3}$ );  $\tau$ , the CS616/CS625 period (microseconds);  $C_0$ , the intercept; and  $C_1$ , the slope.

The calibration coefficients are derived from a curve fit of known water content and CS616/CS625 period.

The number of data sets needed to derive a calibration depends on whether the linear or quadratic form is being used and the accuracy requirement. Consider the expected range of soil water content while viewing FIGURE 8-1 and FIGURE 8-2. If the expected response is nearly linear, fewer laboratory measurements are needed to derive the calibration. A linear response is best described by data taken near the driest and wettest expected water contents.

Collecting measurements of CS616/CS625 period and core samples from the location where the probe is to be used will provide the best soil-specific calibration. However, intentionally changing water content in soil profiles can be difficult.

A vertical face of soil can be formed with a shovel. If the CS616/CS625 is to be used within about 0.5 meters of the surface, the probe can be inserted into the face and water added to the surface with percolation. After adding water, monitor the CS616/CS625 output period to determine when the soil around the rods is at equilibrium.

With soil at equilibrium, record the CS616/CS625 period value.

Soil hydraulic properties are spatially variable. Obtaining measurements that are representative of the soil on a large scale requires multiple readings and sampling. The average of several core samples should be used to calculate volumetric water content. Likewise, the CS616/CS625 should be inserted at least 3 times into the soil recording the period values following each insertion and using the average.

Remove the CS616/CS625 and take core samples of the soil where the probe rods were inserted. This is necessary for measurement of bulk density. Copper tubing of diameter  $\geq 1$  inch and length about 2 inches works well. The tubes can be pressed into the soil surface.

It is good to take replicate samples at locations around the tray surface. Three carefully handled samples will provide good results.

The sample tubes should be pushed evenly into the soil surface. Remove the tube and sample and gently trim the ends of excess soil. Remove excess soil from outside of tube.

Remove all the soil from tube to a tray or container of known weight that can be put in oven or microwave. Weigh and record the wet soil weight.

Water is removed from the sample by heating with oven or microwave. Oven drying requires 24 hours at 105 °C. Microwave drying typically takes 20 minutes depending on microwave power and sample water content. ASTM Method D4643-93 requires heating in microwave for 3 minutes, cooling in desiccator then weighing and repeating this process until weigh is constant.

Gravimetric water content is calculated after the container weight is accounted for.

$$\theta_g = \frac{m_{\text{wet}} - m_{\text{dry}}}{m_{\text{dry}}}$$

For the bulk density,

$$\rho_{\text{bulk}} = \frac{m_{\text{dry}}}{\text{volume}_{\text{cylinder}}}$$

the dry weight of the sample is divided by the sample tube volume.

The volumetric water content is the product of the gravimetric water content and the bulk density

$$\theta_v = \theta_g \times \rho_{\text{bulk}}$$

The average water content for the replicates and the recorded CS616 period are one datum pair to be used for the calibration curve fit.

## 8.2.5 Calculations

The empty cylinders used for core sampling should be clean; both empty weight and volume are measured and recorded. For a cylinder, the volume is:

$$\text{volume} = \pi \times \left(\frac{d}{2}\right)^2 \times h$$

where d is the inside diameter of the cylinder and h is the height of the cylinder.

During soil sampling it is important that the cores be completely filled with soil but not extend beyond the ends of the cylinder.

Once soil core samples are obtained, place the soil-filled cylinder in a small tray of known empty weight. This tray will hold the core sample during drying in an oven.

To obtain  $m_{\text{wet}}$ , subtract the cylinder empty weight and the container empty weight from the weight of the soil filled cylinder in the tray. Remove all the soil from the cylinder and place this soil in the tray. Dry the samples using oven or microwave methods as described above.

To obtain  $m_{\text{dry}}$ , weigh the tray containing the soil after drying. Subtract tray weight for  $m_{\text{dry}}$ . Calculate gravimetric water content,  $\theta_g$ , using

$$\theta_g = \frac{m_{\text{wet}} - m_{\text{dry}}}{m_{\text{dry}}}$$

To obtain soil bulk density, use

$$\rho_{\text{bulk}} = \frac{m_{\text{dry}}}{\text{volume}_{\text{cylinder}}}$$

Volumetric water content is calculated using

$$\theta_v = \theta_g \times \rho_{\text{bulk}} \cdot$$

## 9. Maintenance

The CS616/CS625 does not require periodic maintenance.

## 10. References

- Rhoades, J.D., P.A.C. Raats, and R.J. Prather. 1976. Effects of liquid-phase electrical conductivity, water content and surface conductivity on bulk soil electrical conductivity. *Soil Sci. Soc. Am. J.*, 40: 651-653.
- Rhoades, J.D., N.A. Manteghi, P.J. Shouse, W.J. Alves. 1989. Soil electrical conductivity and soil salinity: New formulations and calibrations. *Soil Sci. Soc. Am. J.*, 53:433-439.





# Appendix A. Discussion of Soil Water Content

---

The water content reflectometer measures volumetric water content. Soil water content is expressed on a gravimetric and a volumetric basis. To obtain the independently determined volumetric water content, gravimetric water content must first be measured. Gravimetric water content ( $\theta_g$ ) is the mass of water per mass of dry soil. It is measured by weighing a soil sample ( $m_{\text{wet}}$ ), drying the sample to remove the water, then weighing the dried soil ( $m_{\text{dry}}$ ).

$$\theta_g = \frac{m_{\text{water}}}{m_{\text{soil}}} = \frac{m_{\text{wet}} - m_{\text{dry}}}{m_{\text{dry}}}$$

Volumetric water content ( $\theta_v$ ) is the volume of liquid water per volume of soil. Volume is the ratio of mass to density ( $\rho_b$ ) which gives:

$$\theta_v = \frac{\text{volume}_{\text{water}}}{\text{volume}_{\text{soil}}} = \frac{\frac{m_{\text{water}}}{\rho_{\text{water}}}}{\frac{m_{\text{soil}}}{\rho_{\text{soil}}}} = \frac{\theta_g \times \rho_{\text{soil}}}{\rho_{\text{water}}}$$

The density of water is close to 1 and often ignored.

Soil bulk density ( $\rho_{\text{bulk}}$ ) is used for  $\rho_{\text{soil}}$  and is the ratio of soil dry mass to sample volume.

$$\rho_{\text{bulk}} = \frac{m_{\text{dry}}}{\text{volume}_{\text{sample}}}$$

Another useful property, soil porosity ( $\varepsilon$ ), is related to soil bulk density as shown by the following expression.

$$\varepsilon = 1 - \frac{\rho_{\text{bulk}}}{\rho_{\text{solid}}}$$

The term  $\rho_{\text{solid}}$  is the density of the soil solid fraction and is approximately  $2.65 \text{ g cm}^{-3}$ .



# Appendix B. Importing Short Cut Code Into CRBasic Editor

---

This tutorial shows:

- How to import a *Short Cut* program into a program editor for additional refinement
- How to import a wiring diagram from *Short Cut* into the comments of a custom program

*Short Cut* creates files, which can be imported into *CRBasic Editor*. Assuming defaults were used when *Short Cut* was installed, these files reside in the C:\campbellsci\SCWin folder:

- .DEF (wiring and memory usage information)
- .CR6 (CR6 datalogger code)
- .CR1 (CR1000 datalogger code)
- .CR8 (CR800 datalogger code)
- .CR3 (CR3000 datalogger code)
- .CR2 (CR200(X) datalogger code)
- .CR5 (CR5000 datalogger code)

Use the following procedure to import *Short Cut* code and wiring diagram into *CRBasic Editor*.

1. Create the *Short Cut* program following the procedure in Section 4, *QuickStart* (p. 2). Finish the program and exit *Short Cut*. Make note of the file name used when saving the *Short Cut* program.
2. Open *CRBasic Editor*.
3. Click **File | Open**. Assuming the default paths were used when *Short Cut* was installed, navigate to C:\CampbellSci\SCWin folder. The file of interest has the .CR6, .CR1, .CR8, .CR3, .CR2, or .CR5 extension. Select the file and click **Open**.
4. Immediately save the file in a folder different from C:\Campbellsci\SCWin, or save the file with a different file name.

---

## NOTE

Once the file is edited with *CRBasic Editor*, *Short Cut* can no longer be used to edit the datalogger program. Change the name of the program file or move it, or *Short Cut* may overwrite it next time it is used.

---

5. The program can now be edited, saved, and sent to the datalogger.
6. Import wiring information to the program by opening the associated .DEF file. Copy and paste the section beginning with heading “-Wiring for CRXXX-” into the *CRBasic* program, usually at the head of the file. After pasting, edit the information such that an apostrophe (') begins each line. This character instructs the datalogger compiler to ignore the line when compiling.



# Appendix C. Example Programs

---

## C.1 CS616 Programs

### C.1.1 CR1000 Program for Measuring Eight CS616 Probes

The following CR1000 program uses the **CS616()** instruction to measure eight CS616 probes connected to the CR1000 datalogger (TABLE C-1). Although this example is for the CR1000, other CRBasic dataloggers are programmed similarly.

TABLE C-1. Datalogger Connection for Eight CS616s Example Program					
Probe Number	Green	Orange	Red	Black	Clear
CS616 #1	5H	C7	12V	⏏	G
CS616 #2	5L	C7	12V	⏏	G
CS616 #3	6H	C7	12V	⏏	G
CS616 #4	6L	C7	12V	⏏	G
CS616 #5	7H	C8	12V	⏏	G
CS616 #6	7L	C8	12V	⏏	G
CS616 #7	8H	C8	12V	⏏	G
CS616 #8	8L	C8	12V	⏏	G
Note: The red wire for all eight CS616s connect to the CR1000's 12V terminal. A user-supplied common tie post may be required.					

**CRBasic Example C-1. CR1000 Program for Measuring Eight CS616 Probes**

```

'Declare Public and Dim Variables
Public batt_volt
Public Panel_temp
Public Period (8)
Public VWC (8)
Public Flag (1)
Dim I

'Declare Constants
'CS616 Default Calibration Constants
const a0= -0.0663
const a1= -0.0063
const a2= 0.0007
'Flag logic constants
const high = true
const low = false

'Define Data Tables
DataTable (Dat30min,1,-1)
DataInterval (0,30,Min,10)
Minimum (1,batt_volt,IEEE4,0,False)
Average (1,Panel_temp,IEEE4,0)
Sample (8,Period(),FP2)
Sample (8,VWC(),FP2)
EndTable

'Main Program
BeginProg
Scan (5,Sec,0,0) 'scan instructions every 5 sec
Battery (Batt_volt)
PanelTemp (Panel_temp,250)
'
'Set flag 1 High every 30 min (Note: User can manually set flag 1 high/low)
If IfTime (0,30,min) Then flag (1) = high '+++++
If Flag (1) = high Then
    'measure 8ea CS616 probes on CR1000
    CS616 (Period(1),4,9,7,4,1.0,0) 'measure 4ea CS616 probes, enable w/ C7
    CS616 (Period(5),4,13,8,4,1.0,0) 'measure 4ea CS616 probes, enable w/ C8
    '
    For I=1 to 8 'convert CS616 period to Volumetric Water Content
        VWC(I)=a0 + a1*Period(I) + a2*Period(I)^2
    Next
    '
    flag(1)= low 'set Flag 1 = Low
    '
EndIf '+++++
'
CallTable Dat30min 'Call Output Tables
NextScan
EndProg

```

## C.1.2 CR1000/Multiplexer Program for Measuring 48 CS616 Probes

The following CR1000 program uses the AM16/32-series multiplexer to measure 48 CS616 probes connected in the 4x16 configuration; wiring is provided in TABLE C-2). The program also measures datalogger battery voltage and temperature.

TABLE C-2. Wiring for CR1000/Multiplexer Example			
CR1000	AM16/32-series (4x16)		CS616 <sup>1</sup>
	Control/Common	Sensor Terminals	
C4	RES	Odd H	CS616#1_Green
C5	CLK	Odd L	CS616#2_Green
12 V	12 V	G	#1,2,3_Black & Clear
Gnd	Gnd	Even H	CS616#3_Green
1H	COM Odd H	Even L	CS616 #1,2,3_Orange
1L	COM Odd L		
Gnd	Gnd		
2H	COM Even H		
C6	COM Even L		
<sup>1</sup> Three sensors to each set of AM16/32 terminals.			

```

CRBasic Example C-2. CR1000/Multiplexer Program for Measuring 48 CS616 Probes

'Declare Public and Dim Variables
Public batt_volt
Public Panel_temp
Public Period (48)
Public VWC (48)
Public Flag (1)
Dim I

'Declare Constants
'CS616 Default Calibration Constants
const a0= -0.0663
const a1= -0.0063
const a2= 0.0007
'Flag logic constants
const high = true
const low = false

'Define Data Tables
DataTable (Dat30min,1,-1)
DataInterval (0,30,Min,10)
Minimum (1,batt_volt,FP2,0,False)
Average (1,Panel_temp,FP2,0)
Sample (48,Period(),FP2)
Sample (48,VWC(),FP2)
EndTable

'Main Program
BeginProg
Scan (5,Sec,0,0) 'scan instructions every 5 sec
  Battery (Batt_volt)
  PanelTemp (Panel_temp,250)
  '
  'Set flag 1 High every 30 min (Note: User can manually set flag 1 high/low)
  If IfTime (0,30,min) Then flag (1) = high '+++++
  If Flag (1) = high Then
    'measure 48ea CS616 probes on AM16/32 in (4x16) mode
    PortSet (4,1) 'Set Mux Reset line High
    '
    I=1 'Set sub scan loop counter
    SubScan (0,mSec,16)
    PulsePort (5,10000) 'Clock Mux
    CS616 (Period(I),3,1,6,3,1.0,0) 'Measure 3ea CS616 probes
    I=I+3
  NextSubScan
  '
  For I=1 to 48 'convert CS616 period to Volumetric Water Content
    VWC(I)=a0 + a1*Period(I) + a2*Period(I)^2
  Next
  '
  PortSet (4,0) 'Set Mux Reset line Low
  flag (1) = low
  '
EndIf '+++++
  CallTable Dat30min 'Call Output Tables
NextScan
EndProg

```



## C.2 CS625 Programs

### C.2.1 CR200(X) Program for Measuring Four CS625 Probes

This CR200X program measures volumetric water content with four CS625 probes; TABLE C-3 provides wiring. The average hourly readings are saved in final storage every 4 hours.

TABLE C-3. Wiring for CR200(X) Program Measuring Four CS625 Probes	
Wire Color	CR200(X)
Green	Single-Ended Channel 1 through 4 (SE1 through SE4)
Black	Associated Grounds for SE1 through SE4
Orange	Control Port 1 (C1)
Red	SW Battery
Clear	G

**CRBasic Example C-3. CR200(X) Program for Measuring Four CS625 Probes**

```

'CR200(X) program to read 4 CS625s
'Standard calibration is used to convert CS625 output
'period to volumetric water content.
'Sensors are read hourly and average water content are written to storage every 4 hours.

'Declare Variables
Public period(4),vwc(4)
Dim i

'Declare Constants
Const a0=-0.0663
Const a1=-0.0063
Const a2=0.0007

'Define Data Tables
DataTable (ofile,1,10)
DataInterval (0,4,hr)
Average (4,vwc,0)
EndTable

'Main Program
BeginProg
Scan (1,hr)
SWBatt (1)
PeriodAvg (period(1),1,0,10,10,C1,1,0)
PeriodAvg (period(2),2,0,10,10,C1,1,0)
PeriodAvg (period(3),3,0,10,10,C1,1,0)
PeriodAvg (period(4),4,0,10,10,C1,1,0)
For i=1 To 4
vwc(i) = a0 + a1*period(i) + a2*period(i)^2
Next i

CallTable ofile
NextScan
EndProg

```

## C.2.2 CR200(X) Program with Temperature Correction

This CR200X program measures temperature with 109 probe and uses the 109 temperature to correct the period for one CS625. The standard calibration equation is used to convert temperature-corrected period to volumetric water content. Sensors are read hourly and average water content and temperature are written to storage every 4 hours. Wiring for the CS625 is provided in TABLE C-4 and wiring for the 109 is provided in TABLE C-5.

**TABLE C-4. CS625 Wiring for CR200X Program with Temperature Correction**

<b>CS625</b>	<b>CR200(X)</b>
Green	Single-Ended Channel 1 (SE1)
Black	Ground for SE1
Orange	Control Port 1 (C1)
Red	SW Battery
Clear	G

**TABLE C-5. 109 Wiring for CR200X Program with Temperature Correction**

<b>109 Leads</b>	<b>CR200(X)</b>
Black	Switched Excitation Channel 1 (EX1)
Red	Single-Ended Channel 5 (SE5)
Purple	G
Clear	G

**CRBasic Example C-4. CR200(X) Program with Temperature Correction**

```

'CR200(X) program to read one 109 temperature probe and 1 CS625.
'Use temperature to correct CS625 period.
'Standard calibration is used to convert CS625 output
'period to volumetric water content.
'Sensors are read hourly and average water content and
'temperature are written to storage every 4 hours.

'Declare Variables
Public Tsoil
Public uncorrected,corrected
Public vwc

'Declare Constants
'Water content calibration constants
Const a0=-0.0663
Const a1=-0.0063
Const a2=0.0007
'Temperature correction constants
Const t0=0.526
Const t1=-0.052
Const t2=0.00136
'Reference temperature
Const Tref=20

'Define Data Tables
DataTable (ofile,1,10)
  DataInterval (0,4,hr)
  Average(1,Tsoil,0)
  Average (1,vwc,0)
EndTable

'Main Program
BeginProg
  Scan (1,hr)
  Therm109 (Tsoil,1,5,Ex1,1.0,0)
  SWBatt (1)
  PeriodAvg (uncorrected,1,0,10,10,C1,1,0)
  SWBatt (0)
  corrected=uncorrected+(Tref-Tsoil)*(t0+t1*uncorrected+t2*uncorrected^2)
  vwc = a0 + a1*corrected + a2*corrected^2
  CallTable ofile
  NextScan
EndProg

```





## Campbell Scientific Companies

---

**Campbell Scientific, Inc.**

815 West 1800 North  
Logan, Utah 84321  
UNITED STATES

[www.campbellsci.com](http://www.campbellsci.com) • [info@campbellsci.com](mailto:info@campbellsci.com)

**Campbell Scientific Canada Corp.**

14532 – 131 Avenue NW  
Edmonton AB T5L 4X4  
CANADA

[www.campbellsci.ca](http://www.campbellsci.ca) • [dataloggers@campbellsci.ca](mailto:dataloggers@campbellsci.ca)

**Campbell Scientific Africa Pty. Ltd.**

PO Box 2450  
Somerset West 7129  
SOUTH AFRICA

[www.campbellsci.co.za](http://www.campbellsci.co.za) • [cleroux@csafrica.co.za](mailto:cleroux@csafrica.co.za)

**Campbell Scientific Centro Caribe S.A.**

300 N Cementerio, Edificio Breller  
Santo Domingo, Heredia 40305  
COSTA RICA

[www.campbellsci.cc](http://www.campbellsci.cc) • [info@campbellsci.cc](mailto:info@campbellsci.cc)

**Campbell Scientific Southeast Asia Co., Ltd.**

877/22 Nirvana@Work, Rama 9 Road  
Suan Luang Subdistrict, Suan Luang District  
Bangkok 10250  
THAILAND

[www.campbellsci.asia](http://www.campbellsci.asia) • [info@campbellsci.asia](mailto:info@campbellsci.asia)

**Campbell Scientific Ltd.**

Campbell Park  
80 Hathern Road  
Shepshed, Loughborough LE12 9GX  
UNITED KINGDOM

[www.campbellsci.co.uk](http://www.campbellsci.co.uk) • [sales@campbellsci.co.uk](mailto:sales@campbellsci.co.uk)

**Campbell Scientific Australia Pty. Ltd.**

PO Box 8108  
Garbutt Post Shop QLD 4814  
AUSTRALIA

[www.campbellsci.com.au](http://www.campbellsci.com.au) • [info@campbellsci.com.au](mailto:info@campbellsci.com.au)

**Campbell Scientific Ltd.**

3 Avenue de la Division Leclerc  
92160 ANTONY  
FRANCE

[www.campbellsci.fr](http://www.campbellsci.fr) • [info@campbellsci.fr](mailto:info@campbellsci.fr)

**Campbell Scientific (Beijing) Co., Ltd.**

8B16, Floor 8 Tower B, Hanwei Plaza  
7 Guanghua Road  
Chaoyang, Beijing 100004  
P.R. CHINA

[www.campbellsci.com](http://www.campbellsci.com) • [info@campbellsci.com.cn](mailto:info@campbellsci.com.cn)

**Campbell Scientific Ltd.**

Fahrenheitstraße 13  
28359 Bremen  
GERMANY

[www.campbellsci.de](http://www.campbellsci.de) • [info@campbellsci.de](mailto:info@campbellsci.de)

**Campbell Scientific do Brasil Ltda.**

Rua Apinagés, n.br. 2018 — Perdizes  
CEP: 01258-00 — São Paulo — SP  
BRASIL

[www.campbellsci.com.br](http://www.campbellsci.com.br) • [vendas@campbellsci.com.br](mailto:vendas@campbellsci.com.br)

**Campbell Scientific Spain, S. L.**

Avda. Pompeu Fabra 7-9, local 1  
08024 Barcelona  
SPAIN

[www.campbellsci.es](http://www.campbellsci.es) • [info@campbellsci.es](mailto:info@campbellsci.es)

Please visit [www.campbellsci.com](http://www.campbellsci.com) to obtain contact information for your local US or international representative.