

***WXT520
Weather
Transmitter***

User Manual

Issued 23.1.13

Copyright © 2006-2013 Campbell Scientific Inc.
Printed under licence by Campbell Scientific Ltd.

Guarantee

This equipment is guaranteed against defects in materials and workmanship. This guarantee applies for twelve months from date of delivery. We will repair or replace products which prove to be defective during the guarantee period provided they are returned to us prepaid. The guarantee will not apply to:

- Equipment which has been modified or altered in any way without the written permission of Campbell Scientific
- Batteries
- Any product which has been subjected to misuse, neglect, acts of God or damage in transit.

Campbell Scientific will return guaranteed equipment by surface carrier prepaid. Campbell Scientific will not reimburse the claimant for costs incurred in removing and/or reinstalling equipment. This guarantee and the Company's obligation thereunder is in lieu of all other guarantees, expressed or implied, including those of suitability and fitness for a particular purpose. Campbell Scientific is not liable for consequential damage.

Please inform us before returning equipment and obtain a Repair Reference Number whether the repair is under guarantee or not. Please state the faults as clearly as possible, and if the product is out of the guarantee period it should be accompanied by a purchase order. Quotations for repairs can be given on request. It is the policy of Campbell Scientific to protect the health of its employees and provide a safe working environment, in support of this policy a "Declaration of Hazardous Material and Decontamination" form will be issued for completion.

When returning equipment, the Repair Reference Number must be clearly marked on the outside of the package. Complete the "Declaration of Hazardous Material and Decontamination" form and ensure a completed copy is returned with your goods. Please note your Repair may not be processed if you do not include a copy of this form and Campbell Scientific Ltd reserves the right to return goods at the customers' expense.

Note that goods sent air freight are subject to Customs clearance fees which Campbell Scientific will charge to customers. In many cases, these charges are greater than the cost of the repair.



Campbell Scientific Ltd,
Campbell Park, 80 Hathern Road,
Shepshed, Loughborough, LE12 9GX, UK
Tel: +44 (0) 1509 601141
Fax: +44 (0) 1509 601091

Email: support@campbellsci.co.uk
www.campbellsci.co.uk

PLEASE READ FIRST

About this manual

Please note that this manual was originally produced by Campbell Scientific Inc. primarily for the North American market. Some spellings, weights and measures may reflect this origin.

Some useful conversion factors:

Area: 1 in ² (square inch) = 645 mm ²	Mass: 1 oz. (ounce) = 28.35 g 1 lb (pound weight) = 0.454 kg
Length: 1 in. (inch) = 25.4 mm 1 ft (foot) = 304.8 mm 1 yard = 0.914 m 1 mile = 1.609 km	Pressure: 1 psi (lb/in ²) = 68.95 mb
	Volume: 1 UK pint = 568.3 ml 1 UK gallon = 4.546 litres 1 US gallon = 3.785 litres

In addition, while most of the information in the manual is correct for all countries, certain information is specific to the North American market and so may not be applicable to European users.

Differences include the U.S standard external power supply details where some information (for example the AC transformer input voltage) will not be applicable for British/European use. *Please note, however, that when a power supply adapter is ordered it will be suitable for use in your country.*

Reference to some radio transmitters, digital cell phones and aerials may also not be applicable according to your locality.

Some brackets, shields and enclosure options, including wiring, are not sold as standard items in the European market; in some cases alternatives are offered. Details of the alternatives will be covered in separate manuals.

Part numbers prefixed with a “#” symbol are special order parts for use with non-EU variants or for special installations. Please quote the full part number with the # when ordering.

Recycling information



At the end of this product's life it should not be put in commercial or domestic refuse but sent for recycling. Any batteries contained within the product or used during the products life should be removed from the product and also be sent to an appropriate recycling facility.

Campbell Scientific Ltd can advise on the recycling of the equipment and in some cases arrange collection and the correct disposal of it, although charges may apply for some items or territories.

For further advice or support, please contact Campbell Scientific Ltd, or your local agent.



Campbell Scientific Ltd, Campbell Park, 80 Hathern Road, Shepshed, Loughborough, LE12 9GX, UK
Tel: +44 (0) 1509 601141 Fax: +44 (0) 1509 601091
Email: support@campbellsci.co.uk
www.campbellsci.co.uk

Contents

PDF viewers: These page numbers refer to the printed version of this document. Use the PDF reader bookmarks tab for links to specific sections.

1. Introduction.....	1
2. Cautionary Statements.....	1
3. Initial Inspection	1
4. Overview.....	1
4.1 Wind Speed and Direction.....	1
4.2 Precipitation	1
4.3 Barometric Pressure, Temperature, and Relative Humidity	2
5. Specifications	2
5.1 Wind Speed	2
5.2 Wind Direction.....	2
5.3 Precipitation	2
5.4 Barometric Pressure	2
5.5 Air Temperature.....	2
5.6 Relative Humidity	2
5.7 Assembly.....	3
6. Installation.....	3
6.1 Mounting to a Campbell Scientific Crossarm	3
6.2 IP66 Mounting Device.....	3
6.3 Bird Spike Kit	4
6.4 Wiring Table	4
6.5 Commands.....	5
6.6 Programming.....	5
6.6.1 CRBasic	5
6.6.1.1 Example CR1000 Program.....	6
6.6.1.2 Example CR200(X) Program	7
6.6.2 Edlog Programming.....	8
6.6.2.1 CR10X Program	8
 Appendix	
A. Configuring the WXT520.....	A-1

Figures

6-1.	008290 WXT520 IP66 Mount	3
6-2.	Optional Bird Spike Device	4
A-1.	Connection Setup screen	A-1
A-2.	Device Settings screen	A-2
A-3.	Sensor Settings screen.....	A-3
A-4.	Message Settings screen.....	A-3

Tables

6-1.	Connections to Campbell Scientific Dataloggers.....	4
6-2.	SDI-12 Commands	5

WXT520 Weather Transmitter

1. Introduction

The WXT520 Weather Transmitter, manufactured by Vaisala, measures wind speed and direction, precipitation, barometric pressure, temperature, and relative humidity—all in a single device that has no moving parts. The WXT520's SDI-12 signal can be measured by any of our SDI-12 equipped dataloggers. The WXT520 is about the size of our larger Gill radiation shield, making it ideal for use with our CR200(X)-series dataloggers in applications requiring quick, short-term deployment. However, the WXT520 is not intended for weather stations that require research-grade performance.

Before installing the sensor, please study

- Section 2, *Cautionary Statements*
- Section 3, *Initial Inspection*

2. Cautionary Statements

- Although the WXT20 is rugged, it should be handled as a precision scientific instrument.

3. Initial Inspection

- Upon receipt of the WXT20, inspect the packaging and contents for damage. File damage claims with the shipping company.

4. Overview

4.1 Wind Speed and Direction

The WXT520's wind sensor consists of three equally spaced transducers that produce ultrasonic signals. Wind speed and direction are determined by measuring the time it takes for the ultrasonic signal of one transducer to travel to the other transducers. Wind direction is not calculated when the wind speed drops below 0.05 m/s. In this case, the last calculated direction output remains until wind speed increases. The computed wind speeds are independent of altitude, temperature, and humidity. The WXT520 is preconfigured to provide the minimum, average, and maximum values for both wind speed and direction. Default wind speed units are m/s.

4.2 Precipitation

The WXT520 uses the RAINCAP® Sensor to measure accumulated rainfall, rain intensity, and rain duration. Precipitation is measured one raindrop at a time. Whenever a raindrop hits the precipitation sensor, an electrical signal is produced that is proportional to the volume of the drop.

The sensor is also capable of distinguishing hail stones from raindrops. The measured rain and hail parameters are cumulative amounts of rain or hail, rain or hail intensity, and the duration of a shower.

4.3 Barometric Pressure, Temperature, and Relative Humidity

The WXT520 has a PTU module that contains a capacitive silicon BAROCAP® sensor for barometric pressure measurements, a capacitive ceramic THERMOCAP® sensor for air temperature measurements, and a capacitive thin film polymer HUMICAP® sensor for relative humidity measurements. The PTU is housed in a naturally aspirated radiation shield that protects the PTU and reflects solar radiation. Default units are °Celsius for temperature and hPa for barometric pressure.

5. Specifications

5.1 Wind Speed

Measurement Range: 0 to 60 m s⁻¹
Accuracy: ±3% at 10 m/s
Response Time: 0.25 s

5.2 Wind Direction

Measurement Range: 0° to 360°
Accuracy: ±3°
Output Resolution: 1°

5.3 Precipitation

Rainfall: cumulative accumulation after latest automatic or manual reset.
Accuracy: 5% (Due to the nature of the phenomenon, deviations caused by spatial variations may exist in precipitation readings, especially in short time scale. The accuracy specification does not include possible wind induced error.)
Collecting Area: 60 cm²
Output Resolution: 0.01 mm (0.001 in)
Rain Duration: counting each ten second increment when droplet detected.
Rain Intensity: one minute running average in ten second steps.
Rainfall Intensity Range: 0 to 200 mm hr⁻¹ (broader range possible with reduced accuracy)

5.4 Barometric Pressure

Measurement Range: 600 to 1100 hPa (mbar)
Accuracy: ±0.5 hPa @ 0° to 30°C; ±1 hPa @ -52° to +60°C
Output Resolution: 0.1 hPa

5.5 Air Temperature

Measurement Range: -52° to +60°C
Accuracy: ±0.3°C @ +20°C
Output Resolution: 0.1°C

5.6 Relative Humidity

Measurement Range: 0 to 100% RH
Accuracy: ±3% RH @ 0 to 90% RH; ±5% RH @ 90 to 100% RH
Output Resolution: 0.1% RH

5.7 Assembly

Compatible Dataloggers:	CR200(X)-series, CR800, CR850, CR1000, CR3000, CR5000, CR510, CR10(X), CR23X
Electromagnetic Compatibility:	Complies with EMC standard EN61326-1; IEC standards: IEC 60945/61000-4-4, IEC 60945/61000-4-2
Input Voltage:	5 to 30 Vdc
Typical Current Drain @ 12 Vdc:	3 mA with default measuring intervals; 0.1 mA (SDI-12 standby)
Output:	SDI-12 as configured by Campbell Scientific; RS-232 and RS-485 also available
Operating Range:	-52° to +60°C; 0 to 100% RH
Dimensions:	24.0 cm (9.4 in) height, 12.0 cm (4.7 in) diameter
Weight:	650 g (1.43 lb)

6. Installation

6.1 Mounting to a Campbell Scientific Crossarm

The WXT520 is mounted to a CM202, CM204, or CM206 crossarm using the 010779 mounting kit.

6.2 IP66 Mounting Device

The 010779 mounting kit provides better protection from water intrusion. When using the 010779, the WXT520's IP classification is increased from IP65 to IP66.

To attach the 008290 to the WXT520, place the L-shaped tabs into the notches on the bottom of the WXT520 (see Figure 6-1). Turn the WXT520 until the mount is locked into place. Once the 010779 is in place, the WXT520 is mounted to a mast or crossarm using the method described in Section 6.1, *Mounting to a Campbell Scientific Crossarm*.



Figure 6-1. 008290 WXT520 IP66 Mount

6.3 Bird Spike Device

The Bird Spike Device is fastened on top of the WXT520 using the set screw provided (see Figure 6-2). This device is used to discourage birds from roosting on the WXT520. It consists of a metallic band with spikes pointing upward. The spike's shape and location ensure minimal interference of wind and rain measurements.

NOTES:

- (1) The spikes are designed not to hurt the birds.
- (2) While the use of this device does discourage interference from birds, absolute protection cannot be guaranteed.
- (3) When this device is attached, snow may be more prone to accumulate on the head of the WXT520. In addition, the snow may melt away more slowly during periods of thaw.



Figure 6-2. Optional Bird Spike Device

6.4 Wiring Table

Table 6-1. Connections to Campbell Scientific Dataloggers					
Colour	Description	CR1000, CR800, CR850, CR3000, CR5000, CR9000(X)	CR10(X), CR510	21X, CR23X, CR7	CR200(X)
Brown	Power	12 V	12 V	+12	SW Battery
Clear (silver) or Red	Power ground	G	G	G	G
Blue	SDI-12 Signal	C1	C2	C2	C1
White	SDI-12 Signal	C1	C2	C2	C1
Green	data ground	G	G	G	G

Yellow	Optional heater power (see note)	12V	12V	+12	SW Battery
Pink	Optional heater ground (see note)	G	G	G	G
Grey		Not used	Not used	Not used	Not used

NOTE

Unless special ordered, the heater will not be operational for WXT520s purchased from Campbell Scientific. Although the heater is not operational, the WXT520 will have a pink and yellow wire. Do not connect the pink and yellow wire unless the heater is operational.

6.5 Commands

Campbell Scientific uses the SDI-12 protocol to communicate with the WXT520. Both "aM!" and "aR!" commands are supported (where "a" is the sensor address). The preferred command is "aR!", since the communication is done in fewer steps. The WXT520 is configured to run continuously so the output is identical. Table 6-2 contains the outputs as configured by Campbell Scientific. All outputs are in SI units.

Table 6-2. SDI-12 Commands

SDI-12 Command	Command Function	Values Returned
aR! or aM!	Composite Message	Wind Direction Average, Wind Speed Average, Air Temperature, Relative Humidity, Barometric Pressure, Rainfall Amount, Hail Amount
aR1! or aM1!	Wind Message	Wind Direction Minimum, Wind Direction Average, Wind Direction Maximum, Wind Speed Minimum, Wind Speed Average, Wind Speed Maximum
aR2! or aM2!	PTU Message	Air Temperature, Relative Humidity, Barometric Pressure
aR3! or aM3!	Precipitation Message	Rainfall Amount, rainfall Duration, Rainfall Intensity, Hail Amount, Hail Duration, Hail Intensity
aR5! or aM5!	Self Diagnostic Message	Supply Voltage, Internal Reference Voltage

6.6 Programming

6.6.1 CRBasic

Dataloggers that use CRBasic include our CR200(X)-series, CR800, CR850, CR1000, CR3000, and CR5000. These dataloggers use the **SDI12Recorder()** instruction to read the WXT520.

The **SDI12Recorder()** instruction has the following form:

SDI12Recorder(*Destination, Output String, Multiplier, Offset*)

6.6.1.1 Example CR1000 Program

Although the following program is for the CR1000, the CR800, CR850, CR3000, and CR5000 are programmed similarly. This program uses the “aR!” command.

```
'CR1000 Series Datalogger

'Declarations
Public PTemp, batt_volt
Public WXT520(7)

Alias WXT520(1)=WindDir
Alias WXT520(2)=WindSpd
Alias WXT520(3)=AirTemp
Alias WXT520(4)=RelHumidity
Alias WXT520(5)=AirPressure
Alias WXT520(6)=Ramount
Alias WXT520(7)=Hamount

Units WindDir = Degrees
Units WindSpd = m/s
Units AirTemp = Celsius
Units RelHumidity = %
Units AirPressure = hPa
Units Ramount = mm
Units Hamount = hits/cm2

'Define Data Tables
DataTable (Test,1,-1)
  DataInterval (0,60,Min,10)
  WindVector (1,WindSpd,WindDir,FP2,False,900,0,0)
  FieldNames("Ws_Mean,Wd_MeanUnitVector,Wd_StdDev")
  Average (1,AirTemp,FP2,False)
  Sample (1,RelHumidity,FP2)
  Sample (1,AirPressure,IEEE4)
  Totalize (1,Ramount,FP2,False)
  Totalize (1,Hamount,FP2,False)
EndTable

'Main Program
BeginProg
  'Running a 5 second scan to coincide with 5 second
  'update interval of the WXT520
  Scan (5,Sec,0,0)
    PanelTemp (PTemp,250)
    Battery (batt_volt)
    'WXT520 connected to SDI12 port 1
    SDI12Recorder (WXT520(1),1,0,"R!",1.0,0)
    CallTable Test
  NextScan
EndProg
```

6.6.1.2 Example CR200(X) Program

```
'CR200/CR200X Series

'Declare Variables and Units
Public BattV
Public SDI12(7)

Alias SDI12(1)=WindDir
Alias SDI12(2)=WindSpd
Alias SDI12(3)=AirTemp
Alias SDI12(4)=RelHumidity
Alias SDI12(5)=AirPressure
Alias SDI12(6)=Ramount
Alias SDI12(7)=Hamount

Units BattV=Volts
Units WindDir=Degrees
Units WindSpd=m/s
Units AirTemp=Celsius
Units RelHumidity=%
Units AirPressure=hPa
Units Ramount=mm
Units Hamount=hits/cm2

'Define Data Tables
DataTable(Hourly,True,-1)
  DataInterval(0,60,Min)
  WindVector (WindSpd,WindDir,False,0,0)
  FieldNames("WindSpd_S_WVT,WindDir_D1_WVT,WindDir_SD1_WVT")
  Average(1,AirTemp,False)
  Sample(1,RelHumidity)
  Sample(1,AirPressure)
  Totalize(1,Ramount,False)
  Totalize(1,Hamount,False)
EndTable

DataTable(Daily,True,-1)
  DataInterval(0,1440,Min)
  Minimum(1,BattV,False,False)
EndTable

'Main Program
BeginProg
  SWBatt(1)
  'Main Scan
  Scan(10,Sec)
  'Default Datalogger Battery Voltage measurement
  Battery(BattV)

  'WXT520
  SDI12Recorder(SDI12(), "OR!", 1, 0)

  'Call Data Tables and Store Data
  CallTable(Hourly)
  CallTable(Daily)
NextScan
EndProg
```

6.6.2 Edlog Programming

Our CR500, CR510, CR10(X), and CR23X dataloggers are programmed with Edlog.

These dataloggers use Instruction 105 to read the WXT520. Your datalogger manual has a detailed explanation of Instruction 105.

Please note that Edlog only allocates one input location for Instruction 105. Additional input locations need to be inserted manually using the Input Location Editor.

6.6.2.1 CR10X Program

The following example is the portion of a CR10X program that measures the WXT520. A complete program will include output processing instructions.

```

;                               wind direction                wind speed
; Get WXT520 Values 1 - 6 (Dn=Wd min, Dm=Wd avg, Dx=Wd max, Sn=Ws min, Sm=Ws avg, Sx=Ws max)
22: SDI-12 Recorder (P105) ;
   1: 0          SDI-12 Address
   2: 1          Start Measurement (aM1!)          ; corresponds with Wind message Command R1
   3: 2          Port                             ; control port for SDI-12 comms
   4: 15         Loc [ Value1 ]
   5: 1.0        Mult
   6: 0.0        Offset

23: Excitation with Delay (P22)
   1: 1          Ex Channel
   2: 0          Delay W/Ex (0.01 sec units)
   3: 50         Delay After Ex (0.01 sec units)
   4: 0          mV Excitation

; Get WXT520 Values 7 - 9 (Ta= air temp, Ua= rel humidity, Pa= air pressure)
24: SDI-12 Recorder (P105)
   1: 0          SDI-12 Address
   2: 2          Start Measurement (aM2!)          ; corresponds with Pressure Humidity and
   3: 2          Port                             Temp Message Command R2
   4: 21         Loc [ Value7 ]
   5: 1.0        Multiplier
   6: 0.0        Offset

25: Excitation with Delay (P22)
   1: 1          Ex Channel
   2: 0          Delay W/Ex (0.01 sec units)
   3: 50         Delay After Ex (0.01 sec units)
   4: 0          mV Excitation

;                               rain                          hail
; Get WXT520 Values 10 - 15 (Rc= amount, Rd= duration, Ri= intensity, Hc= amount, Hd= duration, Hi = intensity)
26: SDI-12 Recorder (P105)
   1: 0          SDI-12 Address
   2: 3          Start Measurement (aM3!)          ; corresponds with Precip Message Command R3
   3: 2          Port
   4: 24         Loc [ Value10 ]
   5: 1.0        Multiplier
   6: 0.0        Offset

```


Appendix A. Configuring the WXT520

NOTE

Modifying the default configuration of the WXT520 requires the purchase of a grey configuration cable; contact Campbell Scientific for more information.

1. Connect one end of the grey Configuration Cable to a COM port on the PC and the other end of the cable to the “Service” connector on the WXT520.
2. Connect a 9 V battery to the Configuration Cable’s battery clip. The female contact of the battery clip is (+).
3. On your PC, run Vaisala’s WXT Configuration Tool Software and go to the Connection Setup Screen.
4. Enter the settings for each of the Connection Setup Screen’s parameters (see Figure A-1). The default settings are:
 - Connect using: enter the COM Port in which the Configuration Cable is connected.
 - Bits per second: 19200
 - Parity: 8-N-1
5. Click on the OK button.

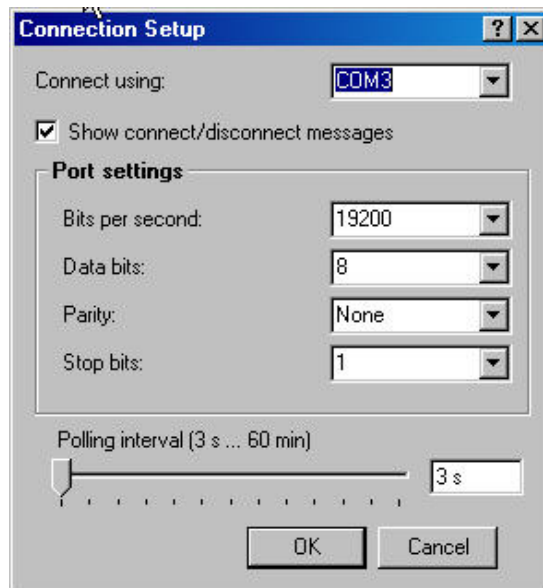


Figure A-1. Connection Setup screen

6. Go to the Device Settings Screen and enter the settings for each of the parameters (see Figure A-2). Default settings are:
 - Device—Address: 0
 - Heating and self diagnostic—verify Enable Heating is NOT selected.
 - Heating and self diagnostics—Update Interval: 15 s
 - Communication protocol—select SDI-12 v1.3
 - User port settings—Port type: SDI-12, select continuous measurements



Figure A-2. Device Settings screen

7. Click on the OK button.
8. Go to the Sensor Settings Screen (see Figure A-3). The default Wind and PTU Update intervals are set to 5 s.

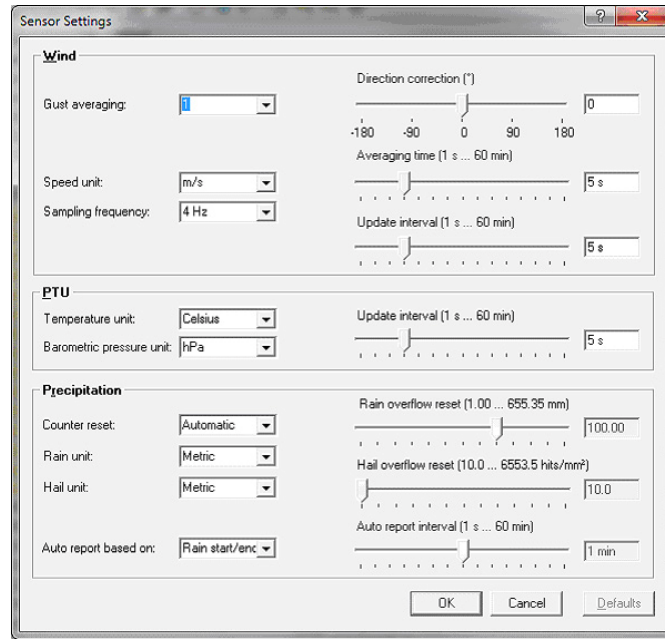


Figure A-3. Sensor Settings screen

9. Click on the OK button.
10. Go to the Message Settings Screen and verify that Message Settings are as desired. The default settings are shown in Figure A-4.

Note: Hail accumulation should be checked.

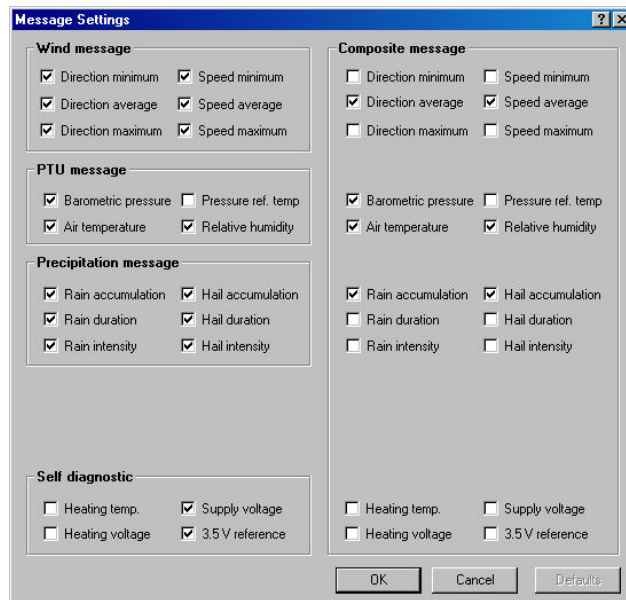


Figure A-4. Message Settings screen

11. Click on the OK button.

12. Close the WXT Configuration Tool.
13. Remove the 9 V battery.
14. Disconnect the Configuration Cable.
15. Secure protective service port cap on PTU.

CAMPBELL SCIENTIFIC COMPANIES

Campbell Scientific, Inc. (CSI)

815 West 1800 North
Logan, Utah 84321
UNITED STATES

www.campbellsci.com • info@campbellsci.com

Campbell Scientific Africa Pty. Ltd. (CSAf)

PO Box 2450
Somerset West 7129
SOUTH AFRICA

www.csafrica.co.za • sales@csafrica.co.za

Campbell Scientific Australia Pty. Ltd. (CSA)

PO Box 8108
Garbutt Post Shop
QLD 4814 AUSTRALIA

www.campbellsci.com.au • info@campbellsci.com.au

Campbell Scientific do Brazil Ltda. (CSB)

Rua Luisa Crapsi Orsi, 15 Butantã
CEP: 005543-000 São Paulo SP BRAZIL

www.campbellsci.com.br • suporte@campbellsci.com.br

Campbell Scientific Canada Corp. (CSC)

11564 - 149th Street NW
Edmonton, Alberta T5M 1W7
CANADA

www.campbellsci.ca • dataloggers@campbellsci.ca

Campbell Scientific Centro Caribe S.A. (CSCC)

300N Cementerio, Edificio Breller
Santo Domingo, Heredia 40305
COSTA RICA

www.campbellsci.cc • info@campbellsci.cc

Campbell Scientific Ltd. (CSL)

Campbell Park
80 Hathern Road
Shepshed, Loughborough LE12 9GX
UNITED KINGDOM

www.campbellsci.co.uk • sales@campbellsci.co.uk

Campbell Scientific Ltd. (France)

3 Avenue de la Division Leclerc
92160 ANTONY
FRANCE

www.campbellsci.fr • info@campbellsci.fr

Campbell Scientific Spain, S. L.

Avda. Pompeu Fabra 7-9
Local 1 - 08024 BARCELONA
SPAIN

www.campbellsci.es • info@campbellsci.es

Campbell Scientific Ltd. (Germany)

Fahrenheitstrasse13, D-28359 Bremen
GERMANY

www.campbellsci.de • info@campbellsci.de