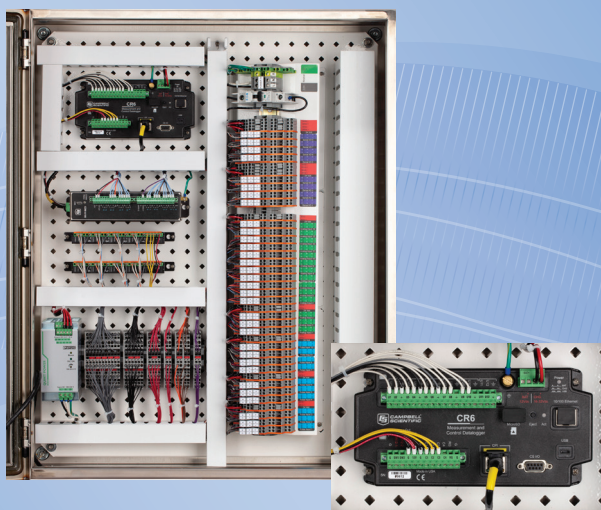
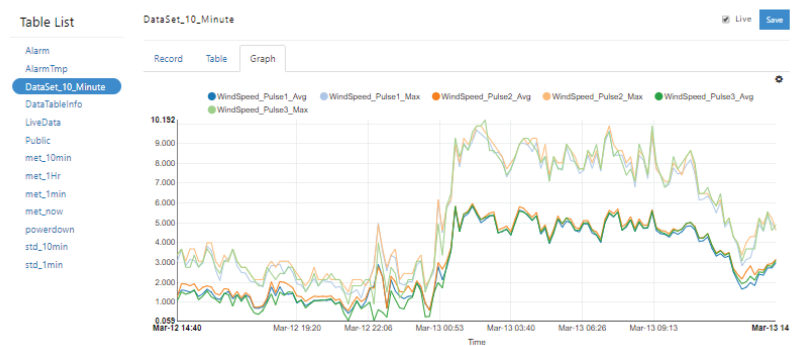




## Resource Assessment & Operational Performance



### Historical Data



Campbell Scientific wind-measurement solutions provide maximum measurement and integration flexibility while delivering the industry's highest-quality wind-speed and meteorological data sets.

Solutions are based on Campbell Scientific's renowned data-logger hardware and are now greatly enhanced with a purpose-built-in, web-based user interface for easy sensor and network setup with real-time and historic data viewing and automated wiring diagram and Modbus map generation.

### Benefits and Features

#### *Design based on experience and industry best practices*

- Making met towers the easiest part of the project
- No data logger programming
- Supports all industry sensors and networking
- System documentation automatically generated

#### *Laboratory quality measurements in the field*

- 24-bit (50 nV) resolution
- -55° to 85°C
- 50/60 Hz noise rejection
- Input/excitation reversal
- Time synchronization
- Self-calibration
- Low power

#### *Extreme Flexibility*

- Wind resource assessment
- Operational met
- Power performance testing
- Blade and foundation monitoring

## CSWIND WebUI—Web-based interface for configuring Campbell Scientific data loggers

### What Is CSWIND WebUI?

The CSWIND WebUI is an advanced, web-based interface for configuring Campbell Scientific data loggers, allowing users easy access to configuration and data monitoring. Simply plug the data logger in with a USB cable and go to: <https://linktodevice.com>

### What Can CSWIND WebUI Do for You?

The integrator saves hours of time because the CSWIND WebUI generates wiring diagrams and data-register maps automatically. The field technician is now more efficient, having easy access to wiring diagrams, real-time and historic data, log tools, and network and sensor field-support tools.

More info: +44(0) 1509 828 888

[campbellsci.eu/wind-energy](http://campbellsci.eu/wind-energy)

Configuration

Not secure | /config.html

CAMPBELL SCIENTIFIC

Dashboard Configuration Historical Data Diagnostics Modbus Map

### Configuration

Apply to Station Config Report Save to File Load from File User Accounts

#### Station Parameters

Station Name  
CSI HQ Test Station

Location  
Logan, UT

Card Data  
None

Filtering  
Filter 60Hz Noise

Station Notes  
Wind monitoring station at CSI HQ

Sensors Network

+ Add Measurement

System

Wind Speed

Wind Direction

Vertical Wind Speed

Sonic

Temp/RH

Barometric Pressure

Solar Radiation

Wetness

Precipitation

Give it a name, add sensors, and configure for networking. The modern sensor library includes all standard and emerging sensor models.

Dashboard

Not secure | /index.html

CAMPBELL SCIENTIFIC

Dashboard Configuration Historical Data Diagnostics Modbus Map

### Dashboard

#### Station Health & Status

Heartbeat 146

Station Name CSI HQ Test Station

Location Logan, UT

Serial Number 1969

Battery Voltage 14.15 V

Lithium Battery Voltage 3.676 V

Panel Temperature -6.493 °C

Cabinet Temperature -5.894 °C

#### Network Settings

IP Address

Netmask 255.255.255.0

Gateway

#### SCADA Network Status

Modbus Master Status online

Modbus Master IP

Time Since Last Poll 00:00:00 (hh:mm:ss)

Getting Started

Troubleshooting Tips

Wind Speed Wind Direction Sonic Temp/RH Barometric Pressure Solar Radiation Wetness Precipitation Visibility Ice Detection

#### Wind Speed

Wind Speed (4.335x.0.000) - Pulse 1

Wind Speed 0.372 m/s

Wind Speed (P2546A) - Pulse 2

Wind Speed 0.58 m/s

Wind Speed (P2546A) - Pulse 3

Wind Speed 0 m/s

#### Temp/RH

Temp/RH (1.1005.54.173) - Analog 1

Temperature -7.621 °C

Relative Humidity 64.617 %

#### Barometric Pressure

Barometric Pressure (AB100, 600-1100 hPa 0-5VDC) - Analog 3

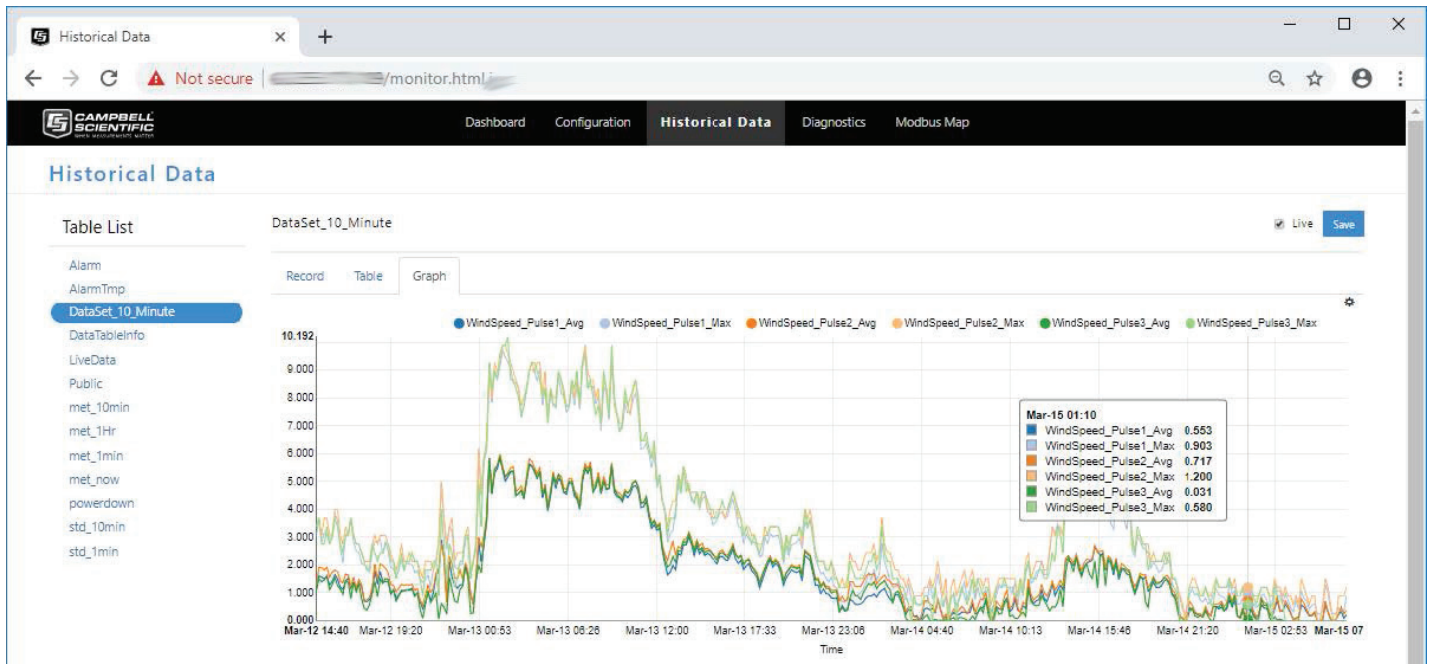
Air Pressure 873.704 mbar

Air Density 1.135 kg/m³

Configuration Utility 1.00 Beta 31

Copyright (C) 2018 Campbell Scientific, Inc.

Verify data logger, sensor, and network operation.



View real-time and historic data and save to file.

Register	Point	Measurement	Signal	Description	Units	Minimum	Maximum
40001	1	Heartbeat	354	Heartbeat		0	600
40003	2	Logger Battery Voltage	14.143	Logger Battery Voltage	Volts	0	15
40005	3	Logger Panel Temperature	NAN	Logger Panel Temperature	°C	-40	70
40007	4	Door Open Alarm	-1	Door Open Alarm			
40009	5	WindSpeed_Pulse1	0	Wind Speed Pulse 1	m/s	0	75
40011	6	WindSpeed_Pulse2	0.58	Wind Speed Pulse 2	m/s	0	75
40013	7	WindSpeed_Pulse3	0	Wind Speed Pulse 3	m/s	0	75
40029	15	Temperature_Analog1	-7.616	Temperature Analog 1	°C	-40	70
40033	17	RH_Analog1	64.699	RH Analog 1	%	0	103
40037	19	AirPressure_Analog3	873.715	Air Pressure Analog 3	mbar	500	1200
40039	20	AirDensity_Analog3	1.135	Air Density Analog 3	kg/m³	0	1.8
40089	45	Cabinet Temperature	NAN	Cabinet Temperature	°C	-40	70

VMet Configuration Utility 1.00 Beta 31  
Copyright (C) 2018 Campbell Scientific, Inc.

The Modbus Map and wiring diagram are dynamically created as sensors are added and deleted.

Wire	Terminal (Analog Input 3)	Function
White	1	Signal H
Blue	2	Signal L
Red	5	12V
Black	6	G

Wind Speed (P2546A) - Pulse 3

Sensor Name: Wind Speed (P2546A) - Pulse 3

Serial Number:

Height: 0

Installed Orientation: 180

Sensor Notes: Sensor was previously connected to VMET, it is very old, I forgot to write down the SN number when we installed.

Multiplier: 0.6201

Offset: 0.27

Wire	Terminal (Pulse Input 3)	Function
------	--------------------------	----------



## Global Sales & Support Network

A worldwide network of companies to help meet your needs



- Campbell Scientific group companies
- Sales representatives

### Australia

*Location:* Garbutt, QLD Australia  
*Phone:* 61.7.4401.7700  
*Email:* [info@campbellsci.com.au](mailto:info@campbellsci.com.au)  
*Website:* [www.campbellsci.com.au](http://www.campbellsci.com.au)

### Brazil

*Location:* São Paulo, SP Brazil  
*Phone:* 11.3732.3399  
*Email:* [vendas@campbellsci.com.br](mailto:vendas@campbellsci.com.br)  
*Website:* [www.campbellsci.com.br](http://www.campbellsci.com.br)

### Canada

*Location:* Edmonton, AB Canada  
*Phone:* 780.454.2505  
*Email:* [dataloggers@campbellsci.ca](mailto:dataloggers@campbellsci.ca)  
*Website:* [www.campbellsci.ca](http://www.campbellsci.ca)

### China

*Location:* Beijing, P. R. China  
*Phone:* 86.10.6561.0080  
*Email:* [info@campbellsci.com.cn](mailto:info@campbellsci.com.cn)  
*Website:* [www.campbellsci.com](http://www.campbellsci.com)

### Costa Rica

*Location:* San Pedro, Costa Rica  
*Phone:* 506.2280.1564  
*Email:* [info@campbellsci.cc](mailto:info@campbellsci.cc)  
*Website:* [www.campbellsci.cc](http://www.campbellsci.cc)

### France

*Location:* Antony, France  
*Phone:* 0033.0.1.56.45.15.20  
*Email:* [info@campbellsci.fr](mailto:info@campbellsci.fr)  
*Website:* [www.campbellsci.fr](http://www.campbellsci.fr)

### Germany

*Location:* Bremen, Germany  
*Phone:* 49.0.421.460974.0  
*Email:* [info@campbellsci.de](mailto:info@campbellsci.de)  
*Website:* [www.campbellsci.de](http://www.campbellsci.de)

### South Africa

*Location:* Stellenbosch, South Africa  
*Phone:* 27.21.8809960  
*Email:* [sales@campbellsci.co.za](mailto:sales@campbellsci.co.za)  
*Website:* [www.campbellsci.co.za](http://www.campbellsci.co.za)

### Southeast Asia

*Location:* Bangkok, Thailand  
*Phone:* 66.2.719.3399  
*Email:* [thitipongc@campbellsci.asia](mailto:thitipongc@campbellsci.asia)  
*Website:* [www.campbellsci.asia](http://www.campbellsci.asia)

### Spain

*Location:* Barcelona, Spain  
*Phone:* 34.93.2323938  
*Email:* [info@campbellsci.es](mailto:info@campbellsci.es)  
*Website:* [www.campbellsci.es](http://www.campbellsci.es)

### UK

*Location:* Shephed, Loughborough, UK  
*Phone:* 44.0.1509.601141  
*Email:* [sales@campbellsci.co.uk](mailto:sales@campbellsci.co.uk)  
*Website:* [www.campbellsci.co.uk](http://www.campbellsci.co.uk)

### USA

*Location:* Logan, UT USA  
*Phone:* 435.227.9120  
*Email:* [info@campbellsci.com](mailto:info@campbellsci.com)  
*Website:* [www.campbellsci.com](http://www.campbellsci.com)

**Other Locations:** Sales and support are provided in many other locations through an extensive network of international reps. For the full list, please visit [www.campbellsci.com/contact#dir](http://www.campbellsci.com/contact#dir).



UK | AUSTRALIA | BRAZIL | CANADA | CHINA | COSTA RICA | FRANCE | GERMANY | SE ASIA | SOUTH AFRICA | SPAIN | USA

More info: +44(0) 1509 828 888

[www.campbellsci.eu](http://www.campbellsci.eu)