

## Spain: Securing Structural Integrity

*Transforming a structural monitoring system at a basilica*



### Background

In 2022, ECR Medio Ambiente assumed the responsibility of overseeing the structural monitoring installation at the Basilica of the Sagrada Família, a task previously managed by another engineering company. The monitoring system, incorporating a diverse array of Campbell Scientific instruments, aimed to ensure the structural integrity of this iconic architectural masterpiece.

### The Challenge

The transition presented a major challenge: identifying certain sensors and their wiring. Lacking proper labeling and calibration sheets, this highlighted the critical importance of maintaining a meticulous inventory and classification of installations from the outset.

### The Solution

### Sommaire

#### Lieu

Barcelona, Spain

#### Produits utilisés

NL121, CR800, CR1000X, AWW200, CR1000

#### Organisations participantes

ECR-Medioambiente

#### Paramètres mesurés

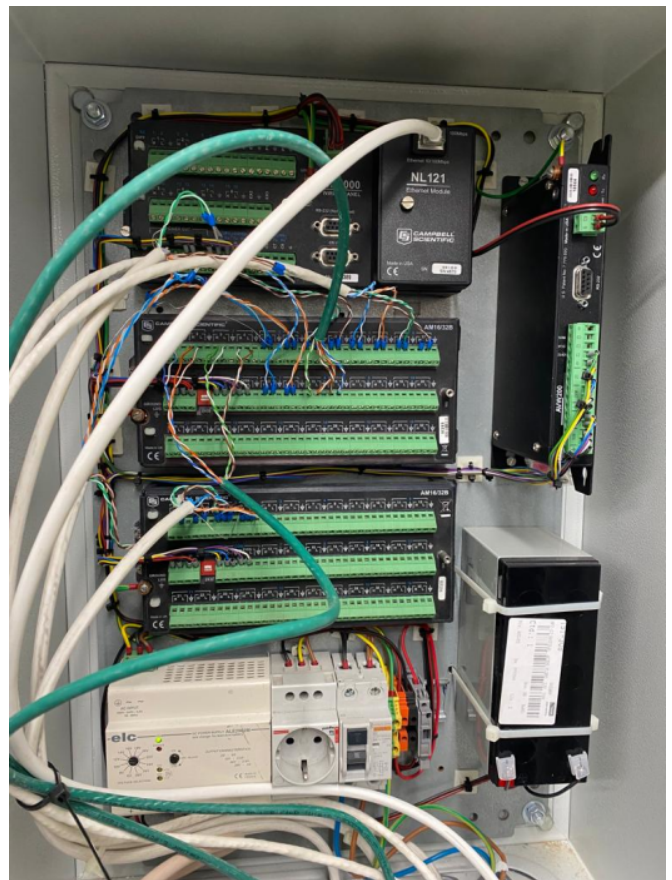
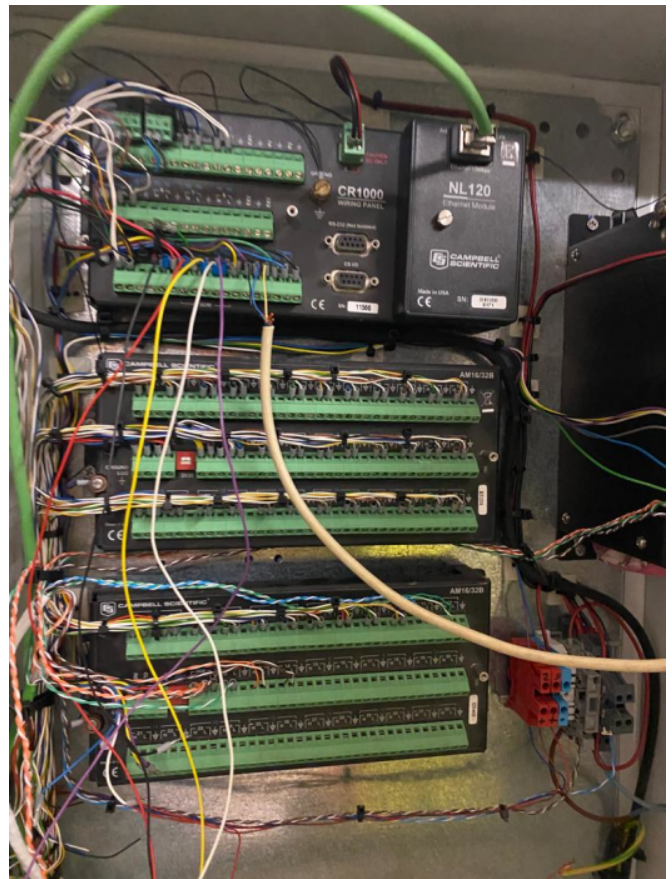
Structural fissures and cracks, pressure changes, air temperature, wind speed and direction, atmospheric conditions, structural acceleration and vibrations, gas and radiation levels

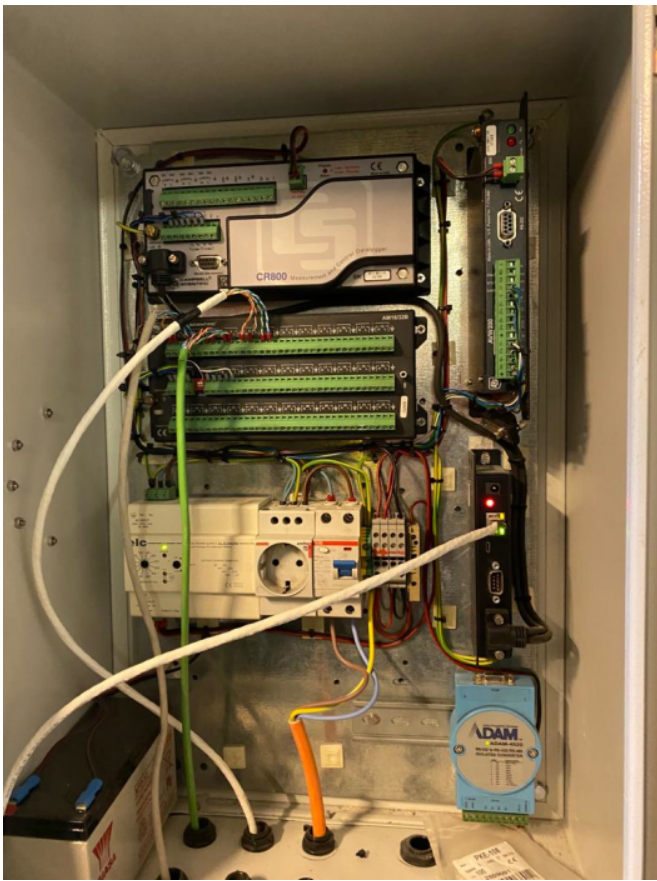
The comprehensive installation included a range of geotechnical instruments such as fissurometers, pressure cells, weather stations, accelerometers, and gas detectors. Collecting data at various frequencies, these instruments played a crucial role in tracking the basilica's structural conditions since 2008. ECR Medio Ambiente leveraged its expertise to integrate and take over the structural monitoring responsibilities. The company implemented a thorough inventory and classification process, ensuring correct sensor identification and labeling, including RAD10, Ethernet adapters (NL121), AVW200, AM16/32, CR800, CR1000, CR1000X, WindSonic, and electrical cabinets/enclosures. Calibration sheets were meticulously maintained.

### Benefits and Impact

- ▶ **Continued Structural Integrity:** ECR Medio Ambiente's intervention ensured the continuous monitoring of the Sagrada Familia's structural health, building on the legacy of data collection since 2008.
- ▶ **Enhanced Data Visualisation:** The integration of data into ECR Medio Ambiente's server facilitated advanced visualisation through their structural auscultation program, providing stakeholders with actionable insights.
- ▶ **Improved Inventory Management:** A systematic approach to labeling and maintaining calibration sheets enhanced the overall efficiency and accuracy of the structural monitoring system.
- ▶ **Lesson in Installation Best Practices:** The challenges faced underscored the importance of proper labeling, documentation, and inventory management during the initial monitoring station installation.

This case study underscores how ECR Medio Ambiente's expertise, in collaboration with Campbell Scientific and coupled with meticulous inventory management, contributed to the seamless transition and optimization of the structural monitoring system at the Basilica of the Sagrada Familia.





Voir en ligne à l'adresse : [www.campbellsci.fr/spain-securing-structural-integrity](http://www.campbellsci.fr/spain-securing-structural-integrity) 



10-12 Cours Louis Lumière, 94300 Vincennes, France | +33 (0)1 56 45 15 20 | [info@campbellsci.fr](mailto:info@campbellsci.fr) | [www.campbellsci.fr](http://www.campbellsci.fr)  
AUSTRALIA | BRAZIL | CANADA | CHINA | COSTA RICA | [FRANCE](#) | GERMANY | INDIA | SOUTH AFRICA | SPAIN | THAILAND | UK | USA

© 2024 Campbell Scientific, Inc. | 01/11/2024