

## For environmental monitoring applications

Compatible with all Campbell Scientific  
dataloggers

### Overview

The 52203 is a unheated tipping-bucket rain gauge for use in moderate climates that measures rainfall. Its catchment area

of 200 cm<sup>2</sup> and measurement resolution of 0.1 mm meet WMO recommendations.

### Benefits and Features

- › High precision - tips at 0.1 mm increments
- › Compatible with all Campbell Scientific dataloggers (including the CR200(X) series)

### Technical Description

The 52203 funnels precipitation into a bucket mechanism that tips when filled to the calibrated level. Each tip is marked by a magnetic reed switch closure that is recorded by a Campbell Scientific datalogger pulse count channel.

### Wind Screen

Campbell Scientific offers the 260-953 Wind Screen to help minimize the effect of wind on the rain measurements. This wind

screen consists of 32 leaves that hang freely and swing as the wind moves past them.

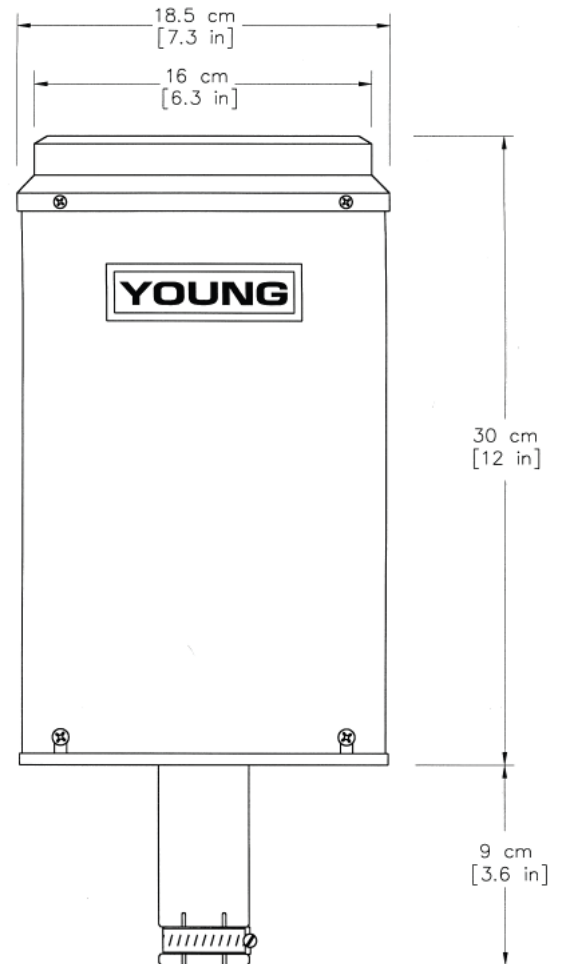
### Mounting

An optional 300 mm long mounting pipe is available (006766). The rain gauge clamps onto this pipe, which is then fastened to a crossarm using the CM220 Right Angle Mounting Bracket, or

using an 008285 Nu-rail bracket. It can also be mounted onto the top of a tripod using the CM216 Sensor Mounting Kit.

## Specifications

- › Sensor Type: Tipping bucket with magnetic reed switch, normally open
- › Accuracy:
  - 2% for up to 25 mm hr<sup>-1</sup> (1 in. hr<sup>-1</sup>);
  - 3% for up to 50 mm hr<sup>-1</sup> (2 in. hr<sup>-1</sup>)
- › Resolution: 0.1 mm (0.004 in)
- › Orifice Diameter: 16 cm (6.3 in)
- › Catchment Area: 200 cm<sup>2</sup> (31 in<sup>2</sup>)
- › Temperature Range: -20° to +50°C (does not melt frozen precipitation)
- › Humidity Range: 0 to 100%
- › Contact Rating: 24 Vac/dc, 400 mA maximum
- › Diameter: 18.5 cm (7.3 in)
- › Height: 30 cm (11.8 in)
- › Weight: 1.16 kg (2.55 lb)



## Ordering information

### Tipping Bucket Rain Gauge

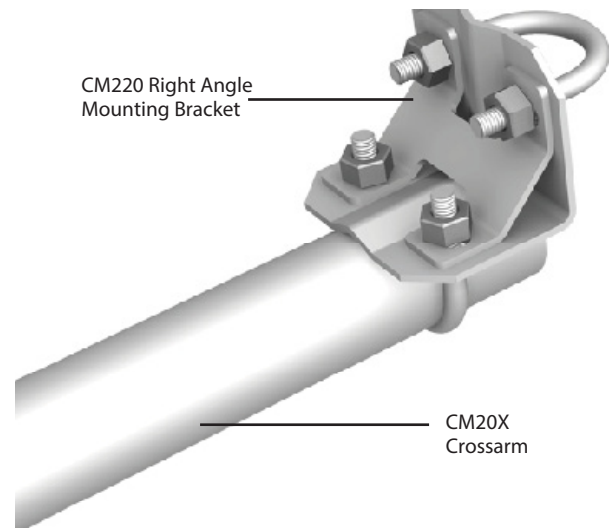
Standard cable length is 6 m (19 ft), but many customers will order a 15 m (50 ft) cable to place the gauge away from the tower or tripod.

### Mounts

- CM220** Right Angle Mounting Bracket (for attaching the 52203 to the end of a crossarm, such as a CM202, CM204, or CM206 using 006766 pipe).
- 008285** Nu-Rail Clamp (for attaching the 52203 to the side of a crossarm, such as a CM202, CM204, or CM206 using 006766 pipe).
- CM216** Sensor Mounting Kit for attaching the 52203 to the top of a CM110, CM115, or CM120 stainless-steel tripod.
- 006766** Optional Mounting Pipe 30 cm length; 1 inch IPS, aluminium unthreaded.

### Wind Screen (to special order)

- 260-953** Novalynx Alter-type Rain Gauge Wind Screen



A close-up of the CM220 Right Angle Mounting Bracket shows the construction and crossarm attachment