

Clients for LoggerNet

Baler, PC-OPC Server, LNDB, and LoggerNetData



Baler, PC-OPC Server, LNDB, and LoggerNetData may be purchased to add functionality to our LoggerNet and LoggerNetAdmin software packages. These clients provide an economical solution for distributing data to remote PCs. To use the LoggerNet clients, a licensed copy of LoggerNet or LoggerNetAdmin needs to be running on a PC.

Baler Data File Client Software

Baler client is ideal for applications in which the data will be imported to a database or a third-party analysis program.

Specifically, the Baler client:

- Accesses data stored in the data cache of the LoggerNet server
- Bales data into files at regular intervals based on the date/time stamps in the data
- Names the “bales” according to the datalogger, table names, and time of bale
- Stores the data on the client PC
- Logs status of baling events
- Allows the user to run multiple instances of Baler to “bale” data at different intervals
- Offers the option to execute a command line operation after each baling event

Please note that you cannot view or interact with the data using Baler. These functions are provided in our LoggerNetData client (see page 2).

PC-OPC Server

The PC-OPC Server provides a standard interface that allows third-party OPC-compatible graphics packages to display the datalogger data. Specifically, the PC-OPC Server:

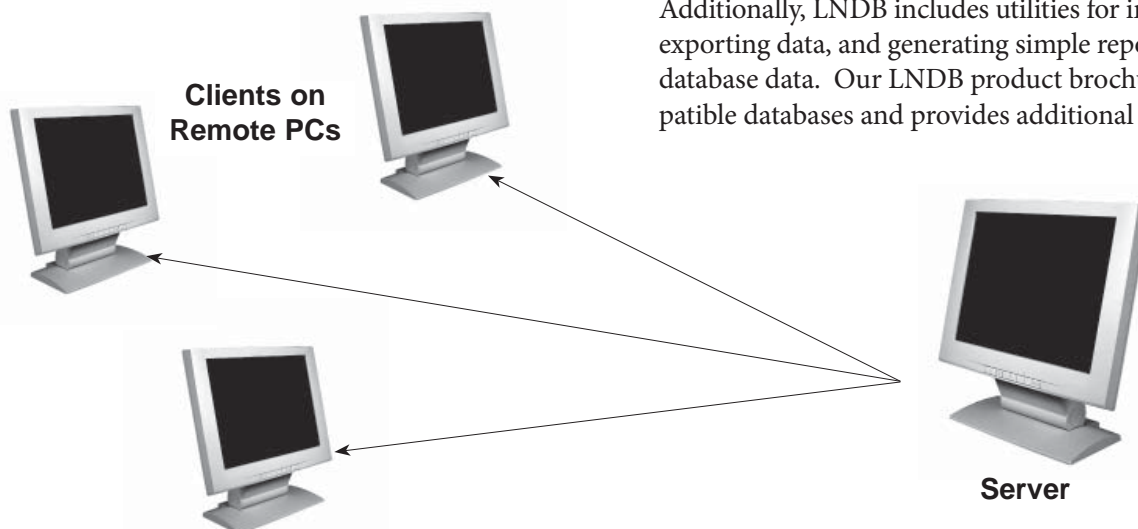
- Provides data via “data tags” to any SCADA or third-party software that supports OPC
- Updates, or pushes, data to third-party software as the LoggerNet server collects it from the datalogger(s)
- Allows third-party software to set input locations, variables, ports, and flags in our dataloggers
- Supports Data Access Standard 2.05a only

Many software and hardware products support OPC. Products that have been tested by Campbell Scientific include Iconics Genesis, Intellution IFIX, and National Instruments Lookout.

A PC-OPC trial version is available, at no charge, from: www.campbellsci.com/downloads. The trial version generates random data instead of retrieving the data.

LNDB

LNDB moves data from one LoggerNet server into a single database. The two main components of LNDB are LNDB Manager and LNDB Engine. LNDB Manager is used to set up a database and select the datalogger data tables that will be stored in the database. LNDB Engine runs as a service and sends the selected data from the LoggerNet data cache to the database. Additionally, LNDB includes utilities for importing and exporting data, and generating simple reports from your database data. Our LNDB product brochure lists compatible databases and provides additional information.



Clients running on remote PCs use TCP/IP to connect to the server of the Datalogger Support Software. For each remote PC, one copy of the client software must be purchased.

LoggerNetData Remote Data Access Software

LoggerNetData allows one or more remote PCs to access the same data without triggering a call to the dataloggers. It distributes data stored in the data cache of the LoggerNet server. LoggerNetData includes four clients that support the following functions:

Data Filer

- Retrieves either a range of data or the data since the last collection
- Creates ASCII data files on remote PCs
- Includes field names and date/time stamps in the ASCII data files

View Pro

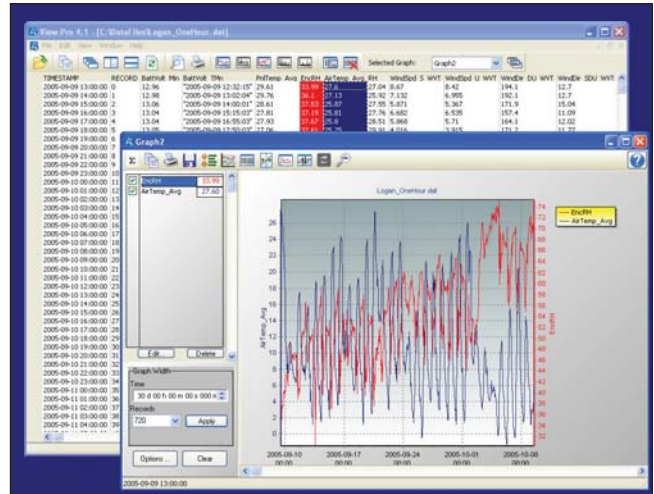
- Graphs historical data in a variety of formats (Line Graph, X-Y Plot, Histogram, Rainflow Histogram, and 2-D and 3-D FFTs)
- Allows multiple data files to be opened and multiple graphs to be created
- Displays data from a LoggerNet database table

RTMC

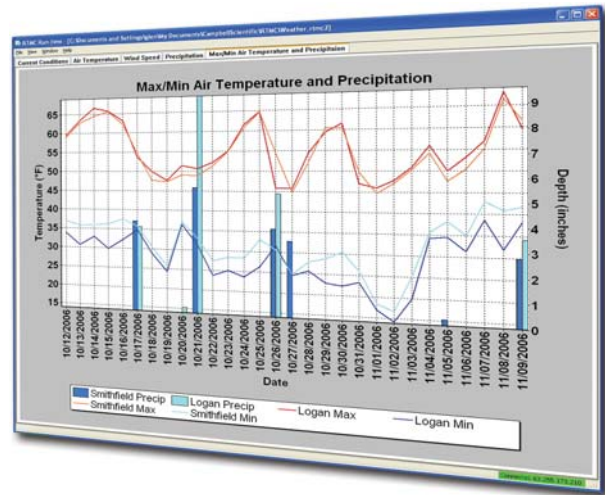
- Graphically displays data as it is collected by LoggerNet or LoggerNetAdmin
- Provides alarm, slider, chart, switch, table, gauge, status bar, numeric, label, image, time, compass, thermometer, and value forwarder components
- Allows the user to change input locations, public variable values, and toggle ports/flags
- Accesses statistical data reported by the LoggerNet server, including the current state of your datalogger network and trigger alarms based on system critical information
- Can perform post-processing on the data being displayed
- Includes developer and run-time modes

Split

- Post processes data files
- Generates text reports and html files



Using View Pro, you can display historical data in a tabular or graphical format.



With its point-and-click interface, RTMC is a simple solution for generating real-time displays.



RTMC simultaneously displays data from any number of dataloggers on one display.

Computer Requirements

All LoggerNet clients run on Windows® XP, Windows® Vista, and Windows® 7.

