



Crossarms and Crossarm Accessories

Attach sensors and peripherals to our tripods and towers

*Rugged, Reliable, and Ready
for any Application*



Crossarms provide a rugged attachment point for securing meteorological sensors, antennas, and other peripherals to our tripods and towers. They place sensors a few feet away from the midline of the tower or tripod, thereby serving to reduce the effects of the mount on the sensor measurement. Sensors or peripherals are mounted to the end of the crossarm using an appropriate mount (see General Mounts, Solar Radiation Mounts, and Solar Radiation Shields brochures).

The specifications for the CM210 and CMB200 are listed on page 2. One CM210 mounting bracket kit is included with each crossarm. The CM210 uses U-bolts to mount the crossarm to a mast, tower leg, or user-supplied vertical pipe. An additional CM210 can be purchased to secure the crossarm to two of the three vertical risers within the tower. The CMB200 is a brace that adds structural support to our crossarms.

CROSSARM SPECIFICATIONS*

	Weight	Dimensions	Material	Compatible Mounts
CM202 Shortest Aluminum 2 ft Crossarm with CM210 Bracket 	1.04 kg (2.3 lb)	<u>Length</u> 0.6 m (2 ft) <u>Outer Diameter</u> 3.34 cm (1.315 in)	1 in. IPS anodized aluminum pipe	<u>General Mounts</u> CM220, 1049, 17953, CM230, CM230XL, CM235, 30626, 18098 <u>Radiation Shields</u> 41303-5A, 41003-5, 41005-5, RAD06, RAD10, RAD14, 43502 <u>Solar Sensor Mounts</u> CM225, CM255, CM255LS, 18098, 27065, 26120
CM202SS Shortest Stainless Steel 2 ft Crossarm with CM210 Bracket 	1.8 kg (4 lb)	<u>Length</u> 0.6 m (2 ft) <u>Outer Diameter</u> 3.175 cm (1.25 in)	stainless-steel pipe	<u>General Mounts</u> CM220, CM230, CM230XL, CM235, 30626, 18098 <u>Radiation Shields</u> 41303-5A, 41003-5, 41005-5, RAD06, RAD10, RAD14, 43502 <u>Solar Sensor Mounts</u> CM225, CM255, CM255LS, 18098, 27065, 26120
CM203 Aluminum 3 ft Crossarm with CM210 Bracket 	1.4 kg (3 lb)	<u>Length</u> 0.9 m (3 ft) <u>Outer Diameter</u> 3.34 cm (1.315 in)	1 in. IPS anodized aluminum pipe	<u>General Mounts</u> CM220, 1049, 17953, CM230, CM230XL, CM235, 30626, 18098 <u>Radiation Shields</u> 41303-5A, 41003-5, 41005-5, RAD06, RAD10, RAD14, 43502 <u>Solar Sensor Mounts</u> CM225, CM255, CM255LS, 18098, 27065, 26120

* The tripods, towers, and vertical pipes that the crossarms can attach to are listed in the CM210 specifications on page 2.

More info: 435.227.9120

campbellsci.com/tripod-and-tower-mounts



CROSSARMS SPECIFICATIONS CONTINUED

CM204 | Aluminum
4 ft Crossarm with
CM210 Bracket

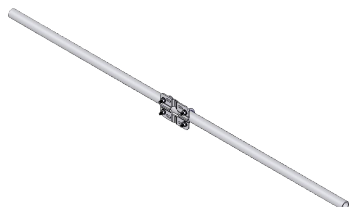


Weight	Dimensions	Material	Compatible Mounts
1.66 kg (3.65 lb)	<u>Length</u> 1.2 m (4 ft) <u>Outer Diameter</u> 3.34 cm (1.315 in)	1 in. IPS anodized aluminum pipe	<u>General Mounts</u> CM220, 1049, 17953, CM230, CM230XL, CM235, 30626, 18098 <u>Radiation Shields</u> 41303-5A, 41003-5, 41005-5, RAD06, RAD10, RAD14, 43502 <u>Solar Sensor Mounts</u> CM225, CM255, CM255LS, 18098, 27065, 26120
2.8 kg (6 lb)	<u>Length</u> 1.2 m (4 ft) <u>Outer Diameter</u> 3.175 cm (1.25 in)	stainless-steel pipe	<u>General Mounts</u> CM220, CM230, CM230XL, CM235, 30626, 18098 <u>Radiation Shields</u> 41303-5A, 41003-5, 41005-5, RAD06, RAD10, RAD14, 43502 <u>Solar Sensor Mounts</u> CM225, CM255, CM255LS, 18098, 27065, 26120
2.27 kg (5.0 lb)	<u>Length</u> 1.8 m (6 ft) <u>Outer Diameter</u> 3.34 cm (1.315 in)	1 in. IPS anodized aluminum pipe	<u>General Mounts</u> CM220, 1049, 17953, CM230, CM230XL, CM235, 30626, 18098 <u>Radiation Shields</u> 41303-5A, 41003-5, 41005-5, RAD06, RAD10, RAD14, 43502 <u>Solar Sensor Mounts</u> CM225, CM255, CM255LS, 18098, 27065, 26120

CM204SS | Longest
Stainless Steel
4 ft Crossarm with
CM210 Bracket

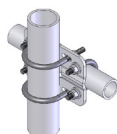


CM206 | Longest
Aluminum
6 ft Crossarm with
CM210 Bracket



ACCESSORIES SPECIFICATIONS

CM210 | Crossarm-
to-Pole Bracket



CMB200 | Crossarm
Brace Kit



Purpose	Size	Material	Attaches to
One CM210 is shipped with each of our crossarms to attach the crossarm to a tripod, tower, or mounting pole. A second CM210 can be purchased to secure the crossarm to two of the three vertical risers within a tower	<u>Weight</u> 0.66 kg (1.45 lb) <u>Dimensions</u> 10.2 x 12.07 x 0.64 cm (4 x 4.75 x 0.25 in)	304 stainless steel with stainless-steel U-bolts and hardware	tripod or tower mast, tower leg, or user-supplied vertical pipe (1.0 in. to 2.1 in. OD)
Adds structural support for a crossarm.	<u>Length</u> 0.9 m (2.8 ft) <u>Outer Diameter</u> 2.54 cm (1 in)	304 stainless-steel pipe with 304 stainless-steel brackets	<u>One End</u> CM200-series crossarm <u>Other End</u> tripod or tower mast, tower leg, or user-supplied vertical pipe (1.0, 1.25, 1.31, or 1.9 in. OD)