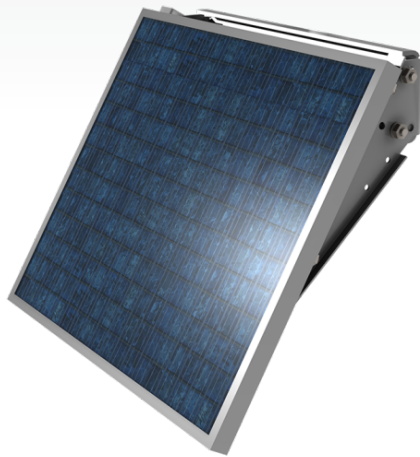





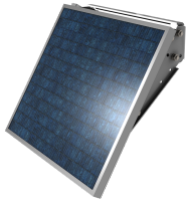
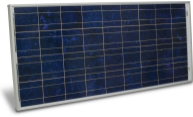
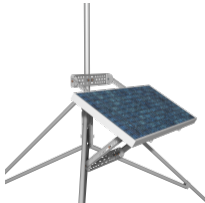
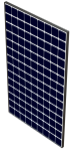
## Solar Panels


Photovoltaic power for recharging batteries



Solar panels are photovoltaic power sources capable of recharging batteries. Solar panels are an ideal solution for remote locations without ac power available, provided the site receives enough sunlight throughout the year to meet the station's needs. The minimum battery size and solar panel output required depend on the average current drain of the system, the maximum time the battery must supply power to the system without being charged, and the location of the site.

	Maximum Peak Power	Current at Peak	Voltage at Peak	Maximum Allowable Wind Gust Speed
<p><b>SP10</b> 10 W Solar Panel</p> <p>Popular</p> 	10 W	0.59 A	16.8 V	<ul style="list-style-type: none"> <li>▶ Note: The wind ratings are for solar panels with the indicated mounts and do not account for strength of tower or tripod.</li> <li>▶ 31 m s<sup>-1</sup> (70 mph) Standard mount</li> <li>▶ 58 m s<sup>-1</sup> (130 mph) Extended mount</li> </ul>

		Maximum Peak Power	Current at Peak	Voltage at Peak	Maximum Allowable Wind Gust Speed
<p><b>SP20</b> 20 W Solar Panel</p> <p>Popular</p> 		20 W	1.19 A	16.8 V	<ul style="list-style-type: none"> <li>➤ 58 m s<sup>-1</sup> (130 mph) Extended mount</li> <li>➤ <i>Note: The wind ratings are for solar panels with the indicated mounts and do not account for strength of tower or tripod.</i></li> <li>➤ 44 m s<sup>-1</sup> (99 mph) Standard mount</li> </ul>
<p><b>SP50-L</b> 50 W Solar Panel</p> <p>Popular</p> 		50 W (100 W peak power when two SP50s are connected to one 18529 regulator)	2.9 A	17.5 V	<ul style="list-style-type: none"> <li>➤ <i>Note: Assumes the 31107 Extended Mounting Kit is used to mount the SP50 to an adequately anchored tripod or tower.</i></li> <li>➤ 58 m s<sup>-1</sup> (130 mph)</li> </ul>
<p><b>SP90-L</b> 90 W Solar Panel</p> <p>Popular</p> 		90 W (180 W peak power when two SP90s are connected to one 18529 regulator)	5.0 A	17.9 V	<ul style="list-style-type: none"> <li>➤ 50 m s<sup>-1</sup> (112 mph)</li> <li>➤ <i>Note: Assumes the 31107 Extended Mounting Kit is used to mount the SP90 to an adequately anchored tripod or tower.</i></li> </ul>
<p><b>SP305-L</b> 305 W Solar Panel</p> <p>Popular</p> 		305 W	9.33 A	32.7 V	Not rated

		<i>Maximum Peak Power</i>	<i>Current at Peak</i>	<i>Voltage at Peak</i>	<i>Maximum Allowable Wind Gust Speed</i>
<b>SP5-L</b> 5 W Solar Panel 		4.5 W	0.27 A	16.5 V	—

For comprehensive details, visit: [www.campbellsci.com/solar-panels](http://www.campbellsci.com/solar-panels) 



Campbell Scientific, Inc. | 815 W 1800 N | Logan, UT 84321-1784 | (435) 227-9120 | [www.campbellsci.com](http://www.campbellsci.com)  
 AUSTRALIA | BRAZIL | CANADA | CHINA | COSTA RICA | FRANCE | GERMANY | INDIA | SOUTH AFRICA | SPAIN | THAILAND | UK | [USA](http://USA)