

Konect PakBus Router Using StarLink

PakBus Routing Service

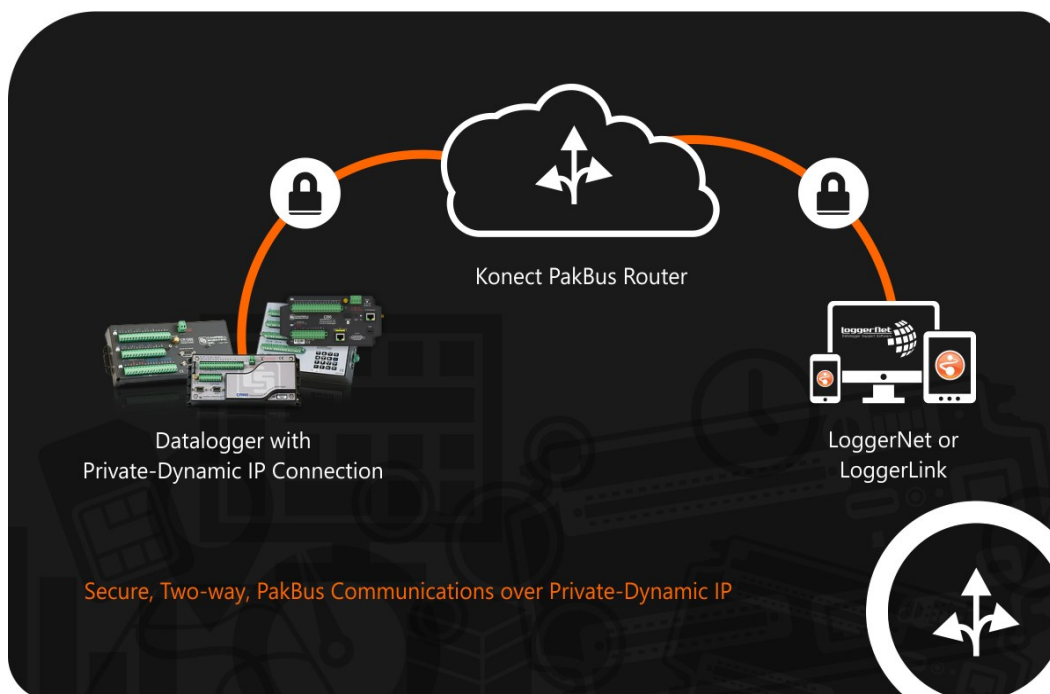


Table of contents

1. Introduction	1
2. Get started	1
3. Configure data logger	2
4. Set up LoggerNet	4
5. Set up LoggerLink (optional)	9


1. Introduction

The secure Konect PakBus™ Router provides on-demand, two-way access to your data logger. Konect PakBus Router is a cloud-based service that bridges an internet-enabled data logger with *LoggerNet* or *LoggerLink* data logger support software.

This guide will walk you through the steps to:

1. Set up the Konect PakBus Router.
2. Configure a data logger.
3. Set up *LoggerNet* or *LoggerLink*.

NOTE:

This guide is for setting up the Konect PakBus Router with StarLink. If you are setting up the Konect PakBus Router with a cellular modem, see <https://s.campbellsci.com/documents/us/manuals/konect-pakbus-router-getting-started-guide.pdf> .

NOTE:

If you have not already received the Konect PakBus Router connection information from Campbell Scientific, you will need to request a quote for a Konect Pakbus Router. A quote can be obtained by calling your local Campbell Scientific office: [Campbell Scientific Regional Offices](#).

2. Get started

Unlike with the Konect PB Router claim codes distributed with Campbell Scientific cellular modems, your Konect PB Router comes activated upon delivery. Use the server address, port number, password, and PakBus address provided to you (via email) to configure your data logger.

Please find enclosed details of your Konect PakBus Router Service, which is provided in accordance with the Konect Global Data Services terms and conditions. By using this service, you are agreeing to our terms and conditions, full copies of which can be found at <http://www.konectgds.com>.

Konect Router Address	Port	TCP Password	PakBus Address Range
xxxxxxxx.konectgds.com	xxxx	xxxxxxx	addition of address 1 Full range is therefore now 1 to 1


*Please note duplicate PakBus addresses must not be used or it will impede the operation of your Konect router.
Note if you are using LoggerLink you will need to add PakBus address 4070 as the neighbour address.*

3. Configure data logger

The data logger setup is very similar to setting the Konect PB Router with a Campbell Scientific cellular modem.

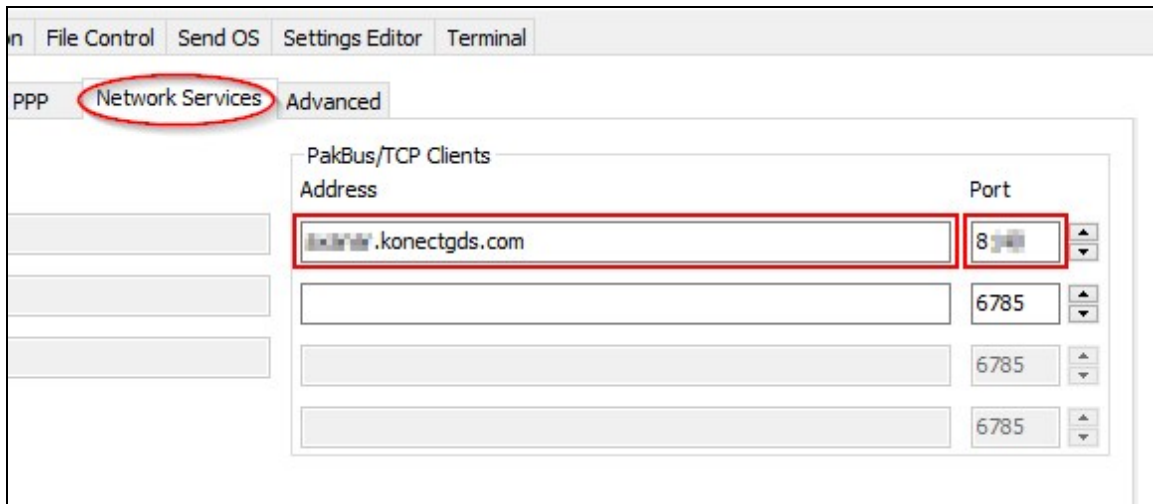
1. Launch the *Device Configuration Utility* . All tabs are within the **Deployment** category.

On the **Datalogger** tab, change the data logger **PakBus Address** and **PakBus/TCP Password** to match the values from your email (see [Get started](#) [p. 1]).

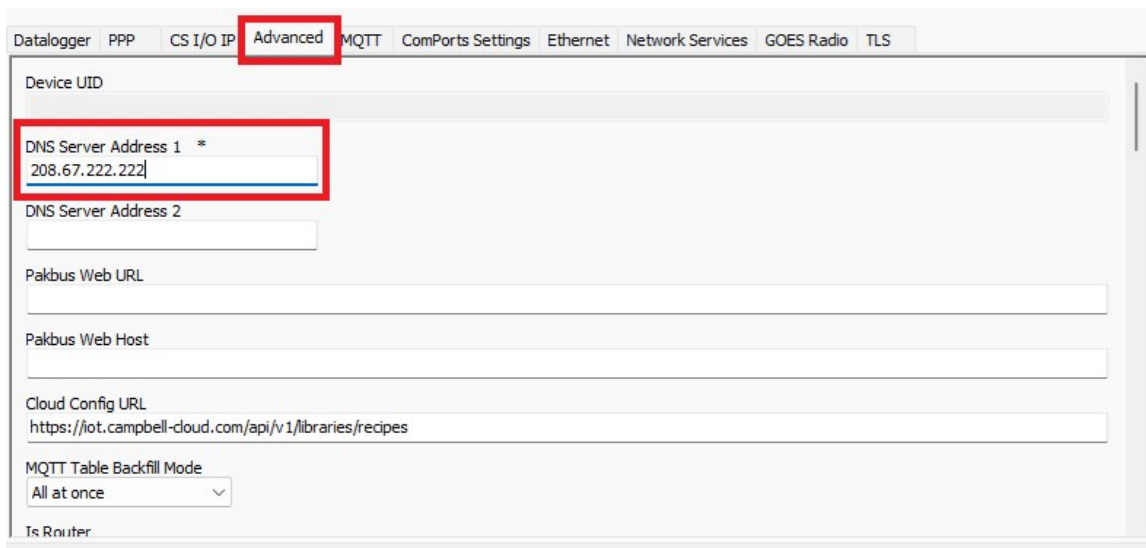


The screenshot shows the 'Datalogger' configuration window. The 'Datalogger' tab is selected and circled in red. The 'PakBus Address' dropdown menu is set to '101' and is highlighted with a red box. The 'PakBus Security' section contains three 'Security Code' dropdowns (all set to '0'), 'PakBus Encryption Key' and 'PakBus Encryption Key Confirm' text boxes, and 'PakBus/TCP Password' and 'Confirm PakBus/TCP Password' text boxes, all of which are highlighted with a red box.

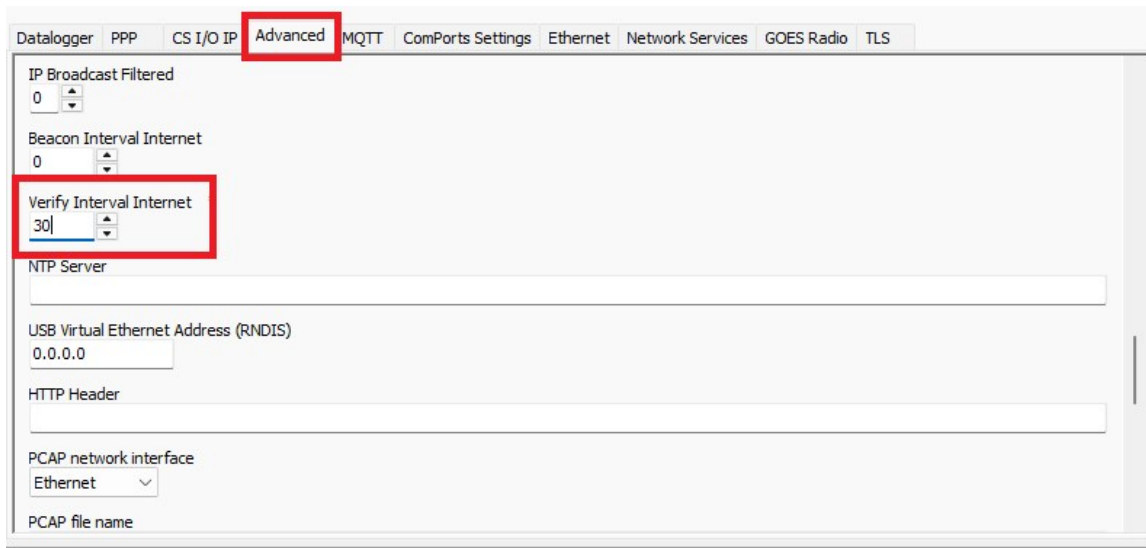
2. On the **Network Services** tab, in the **PakBus/TCP Clients** box, type the Konect Router Address and Port number noted during the [Get started](#) (p. 1) step.



3. Next click the **Settings Editor** tab, then click **Advanced**. Under **DNS Server Address 1** enter 208.67.222.222. This setting ensures that, over time, changes in the automatic DNS settings the data logger receives from the StarLink gateway will not break the data logger's ability to resolve the Konect PB Router server.




4. On the **Settings Editor > Advanced** tab, scroll down to **Verify Interval Internet**. Set this to something frequent enough to keep the PakBus link between the server and data logger live at all times. 30 or 60 seconds is typically sufficient. This setting allows the server and data logger to detect a lost PakBus connection quickly.



5. **Apply** to save your changes.

4. Set up *LoggerNet*

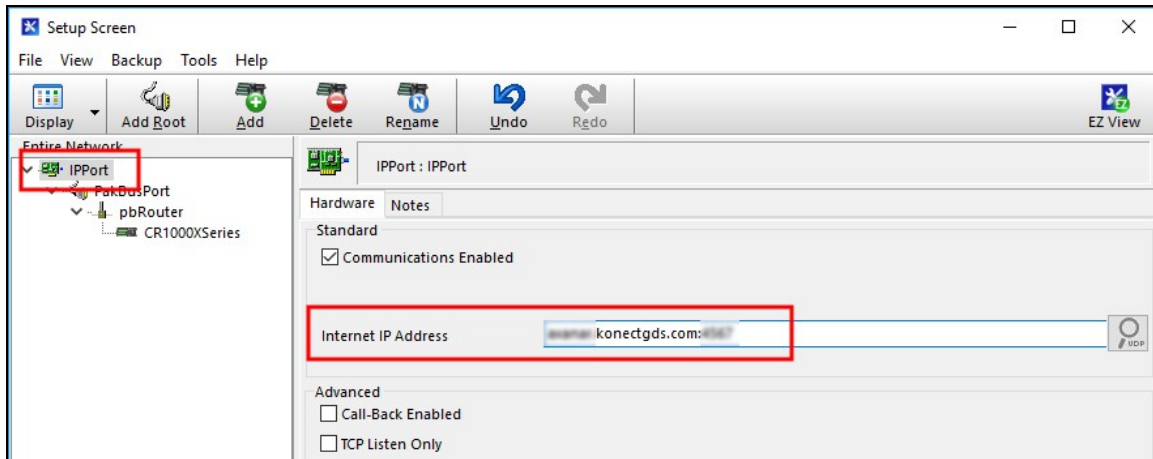
1. In the Standard View of *LoggerNet* Setup , add an **IPPort > PakBusPort > pbRouter**, and data logger.



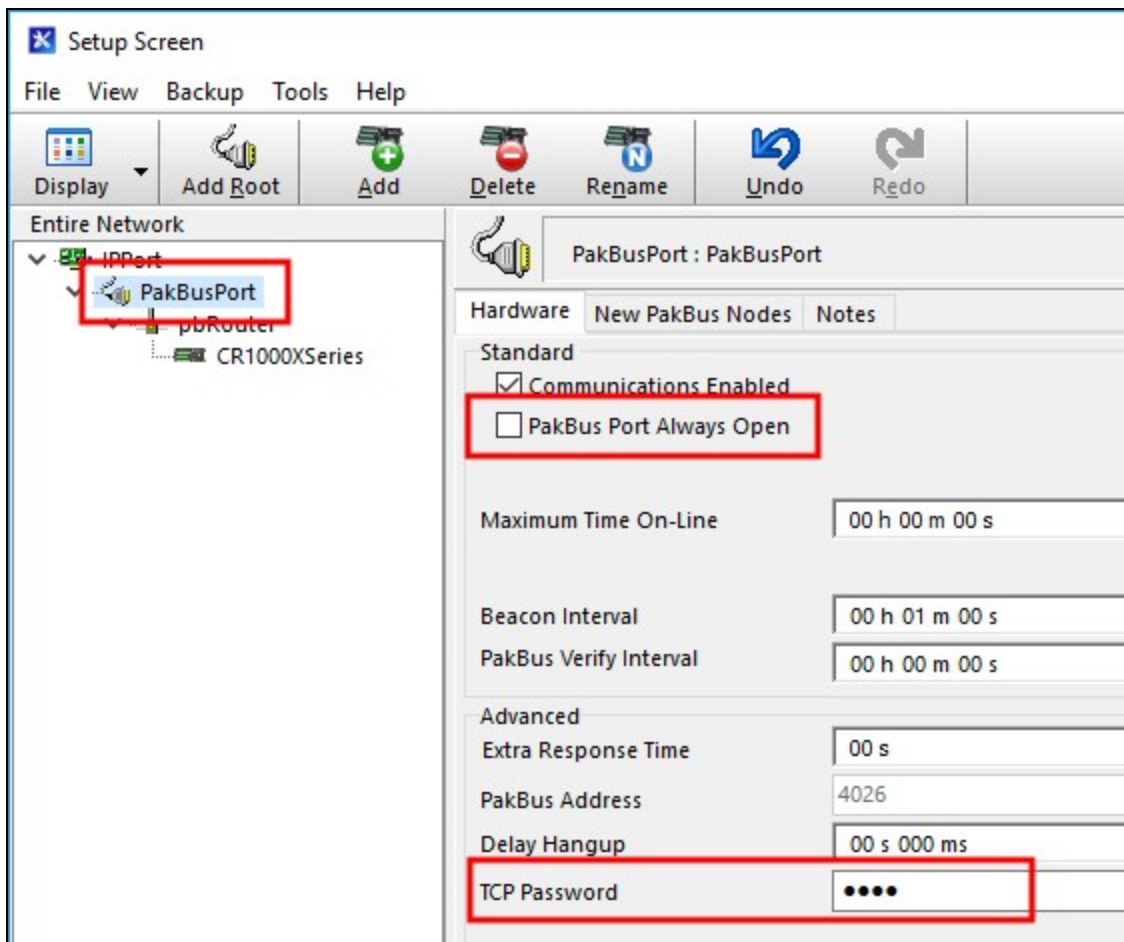
2. On the **IPPort Hardware** tab, select the **Internet IP Address** field. Enter the Konect PakBus Router DNS address and Port number separated by a colon as noted during the [Get started](#) (p. 1) step.

NOTE:

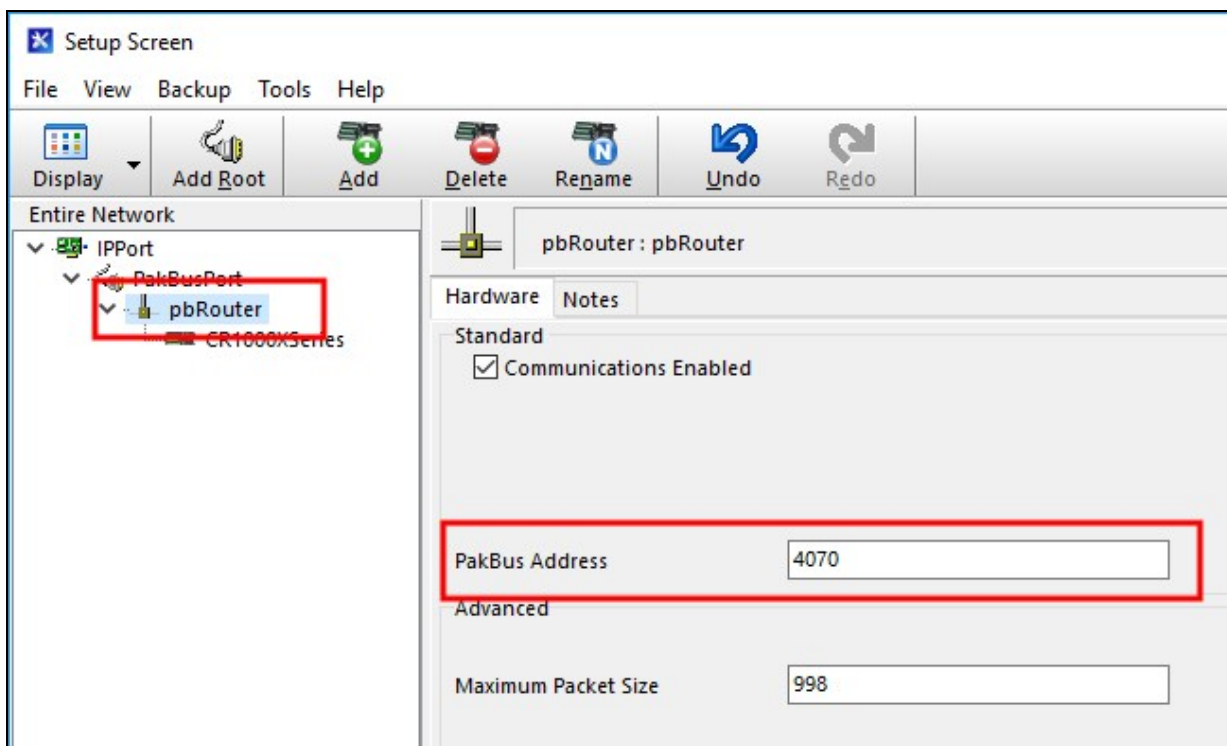
Address format: dddd.konectgds.com:pppp



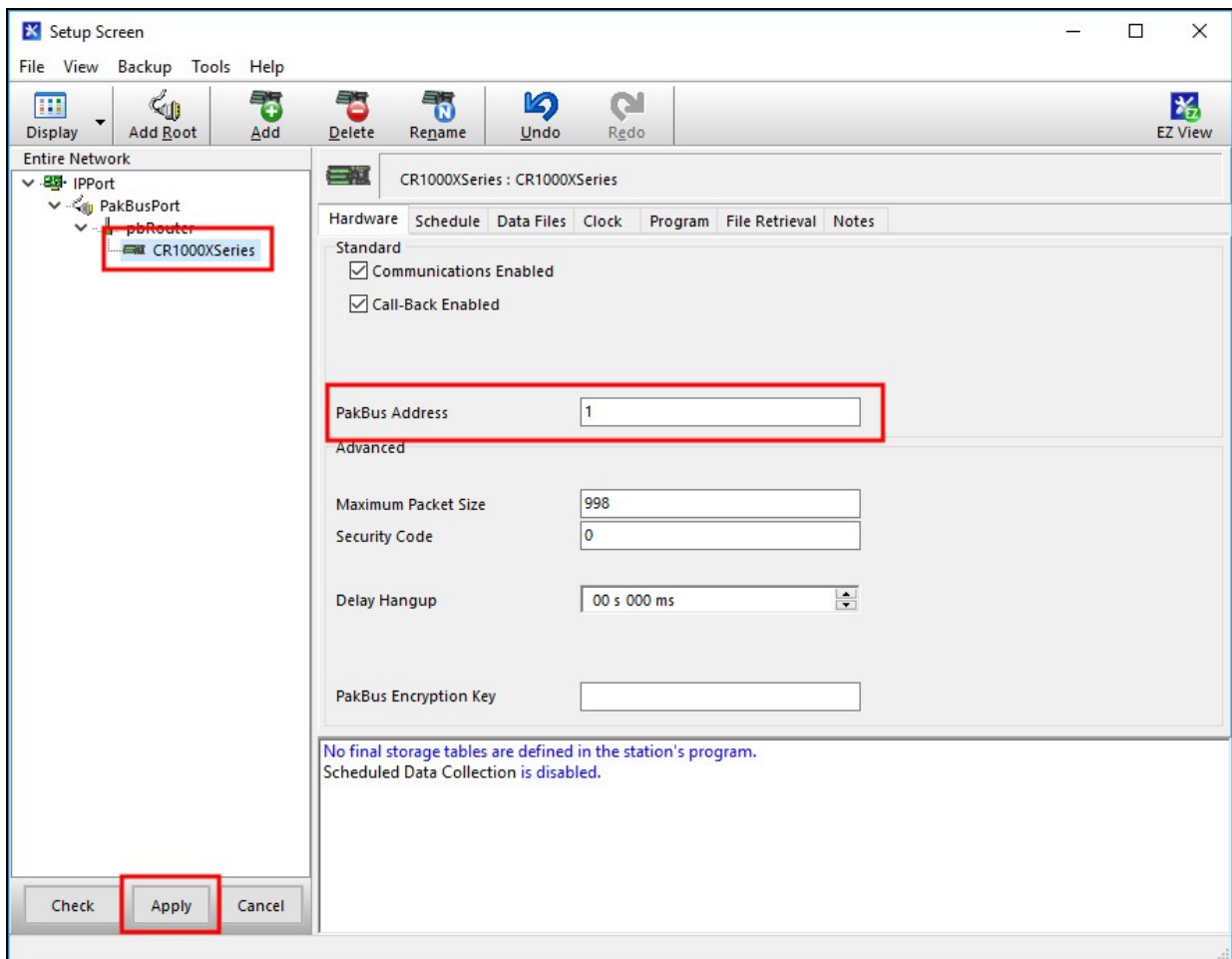
3. Leave the PakBusPort settings at their defaults. Ensure **PakBus Port Always Open** is not selected. Then, on the **PakBusPort Hardware** tab, set the **TCP Password**.



4. Select **pbRouter** from the Entire Network. On the **Hardware** tab, enter **4070** in the **PakBus Address** box.



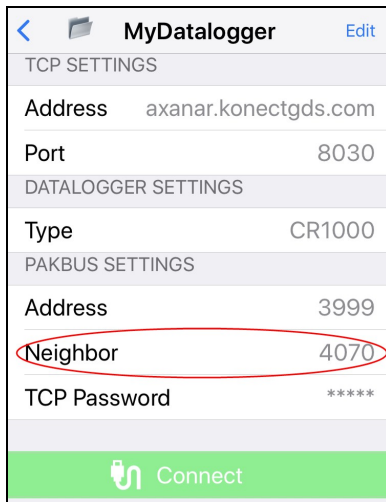
5. On the data logger **Hardware** tab, enter the **PakBus Address** from your email (see [Get started](#) [p. 1]).



6. **Apply** to save your changes.
7. On the **Clock** tab, **Check Clocks**. When communications are successful, the **Station Date/Time** field will update.

5. Set up *LoggerLink* (optional)

LoggerLink mobile apps are another way to connect to your data logger through the Konect PakBus Router. When using *LoggerLink* the **PakBus Neighbor** setting must be set to **4070**.



TCP SETTINGS	
Address	axanar.konectgds.com
Port	8030
DATALOGGER SETTINGS	
Type	CR1000
PAKBUS SETTINGS	
Address	3999
Neighbor	4070
TCP Password	*****

Connect

See the help in *LoggerLink* or www.campbellsci.com/loggerlink for more information. Or, watch a video about using *LoggerLink* www.campbellsci.com/videos/loggerlink-software-an-introduction.

Global Sales and Support Network

A worldwide network to help meet your needs



Campbell Scientific Regional Offices

Australia

Location: Garbutt, QLD Australia
Phone: 61.7.4401.7700
Email: info@campbellsci.com.au
Website: www.campbellsci.com.au

Brazil

Location: São Paulo, SP Brazil
Phone: 11.3732.3399
Email: vendas@campbellsci.com.br
Website: www.campbellsci.com.br

Canada

Location: Edmonton, AB Canada
Phone: 780.454.2505
Email: dataloggers@campbellsci.ca
Website: www.campbellsci.ca

China

Location: Beijing, P. R. China
Phone: 86.10.6561.0080
Email: info@campbellsci.com.cn
Website: www.campbellsci.com.cn

Costa Rica

Location: San Pedro, Costa Rica
Phone: 506.2280.1564
Email: info@campbellsci.com
Website: www.campbellsci.com

France

Location: Montrouge, France
Phone: 0033.0.1.56.45.15.20
Email: info@campbellsci.fr
Website: www.campbellsci.fr

Germany

Location: Bremen, Germany
Phone: 49.0.421.460974.0
Email: info@campbellsci.de
Website: www.campbellsci.de

India

Location: New Delhi, DL India
Phone: 91.11.46500481.482
Email: info@campbellsci.in
Website: www.campbellsci.in

Japan

Location: Kawagishi, Toda City, Japan
Phone: 048.400.5001
Email: jp-info@campbellsci.com
Website: www.campbellsci.co.jp

South Africa

Location: Stellenbosch, South Africa
Phone: 27.21.8809960
Email: sales@campbellsci.co.za
Website: www.campbellsci.co.za

Spain

Location: Barcelona, Spain
Phone: 34.93.2323938
Email: info@campbellsci.es
Website: www.campbellsci.es

Thailand

Location: Bangkok, Thailand
Phone: 66.2.719.3399
Email: info@campbellsci.asia
Website: www.campbellsci.asia

UK

Location: Shephed, Loughborough, UK
Phone: 44.0.1509.601141
Email: sales@campbellsci.co.uk
Website: www.campbellsci.co.uk

USA

Location: Logan, UT USA
Phone: 435.227.9120
Email: info@campbellsci.com
Website: www.campbellsci.com