

OPERATOR'S MANUAL



OBS-5+ System

Revision: 11/13



Copyright © 2008-2013
Campbell Scientific, Inc.

Warranty

“PRODUCTS MANUFACTURED BY CAMPBELL SCIENTIFIC, INC. are warranted by Campbell Scientific, Inc. (“Campbell”) to be free from defects in materials and workmanship under normal use and service for twelve (12) months from date of shipment unless otherwise specified in the corresponding Campbell pricelist or product manual. Products not manufactured, but that are re-sold by Campbell, are warranted only to the limits extended by the original manufacturer. Batteries, fine-wire thermocouples, desiccant, and other consumables have no warranty. Campbell’s obligation under this warranty is limited to repairing or replacing (at Campbell’s option) defective products, which shall be the sole and exclusive remedy under this warranty. The customer shall assume all costs of removing, reinstalling, and shipping defective products to Campbell. Campbell will return such products by surface carrier prepaid within the continental United States of America. To all other locations, Campbell will return such products best way CIP (Port of Entry) INCOTERM® 2010, prepaid. This warranty shall not apply to any products which have been subjected to modification, misuse, neglect, improper service, accidents of nature, or shipping damage. This warranty is in lieu of all other warranties, expressed or implied. The warranty for installation services performed by Campbell such as programming to customer specifications, electrical connections to products manufactured by Campbell, and product specific training, is part of Campbell’s product warranty. CAMPBELL EXPRESSLY DISCLAIMS AND EXCLUDES ANY IMPLIED WARRANTIES OF MERCHANTABILITY OR FITNESS FOR A PARTICULAR PURPOSE. Campbell is not liable for any special, indirect, incidental, and/or consequential damages.”

Assistance

Products may not be returned without prior authorization. The following contact information is for US and international customers residing in countries served by Campbell Scientific, Inc. directly. Affiliate companies handle repairs for customers within their territories. Please visit www.campbellsci.com to determine which Campbell Scientific company serves your country.

To obtain a Returned Materials Authorization (RMA), contact CAMPBELL SCIENTIFIC, INC., phone (435) 227-9000. After an application engineer determines the nature of the problem, an RMA number will be issued. Please write this number clearly on the outside of the shipping container. Campbell Scientific's shipping address is:

CAMPBELL SCIENTIFIC, INC.

RMA# _____
815 West 1800 North
Logan, Utah 84321-1784

For all returns, the customer must fill out a "Statement of Product Cleanliness and Decontamination" form and comply with the requirements specified in it. The form is available from our web site at www.campbellsci.com/repair. A completed form must be either emailed to repair@campbellsci.com or faxed to (435) 227-9106. Campbell Scientific is unable to process any returns until we receive this form. If the form is not received within three days of product receipt or is incomplete, the product will be returned to the customer at the customer's expense. Campbell Scientific reserves the right to refuse service on products that were exposed to contaminants that may cause health or safety concerns for our employees.

Table of Contents

PDF viewers: These page numbers refer to the printed version of this document. Use the PDF reader bookmarks tab for links to specific sections.

| | |
|--|----------|
| 1. Introduction | 1 |
| 2. Cautionary Statements..... | 1 |
| 3. Initial Inspection | 1 |
| 3.1 Ships With..... | 1 |
| 4. Overview | 2 |
| 4.1 Optics | 2 |
| 4.2 SSC-Measurement Principle | 3 |
| 5. Specifications | 5 |
| 5.1 Measurement Range..... | 5 |
| 5.2 Accuracy | 6 |
| 5.3 OBS-5+ Sensor | 6 |
| 5.4 Other Data..... | 6 |
| 5.5 Dimensions..... | 6 |
| 6. Operation..... | 7 |
| 6.1 Instrument Setup | 7 |
| 6.1.1 Mounting Suggestions..... | 7 |
| 6.1.2 Surveys..... | 7 |
| 6.1.3 Logging Data | 8 |
| 6.1.4 Battery Installation..... | 8 |
| 6.2 OBS-5+Utility Software..... | 9 |
| 6.2.1 Software Installation | 9 |
| 6.2.2 Running the OBS-5+ Utility | 10 |
| 6.2.3 Pull-Down Menus | 11 |
| 6.2.4 Communication Settings | 11 |
| 6.2.5 Testing Sensors | 12 |
| 6.2.6 Monitoring Turbidity (NTU)..... | 13 |
| 6.2.7 Water Density and Barometric Corrections | 13 |
| 6.2.8 Sample Statistics | 13 |
| 6.2.9 Sampling Modes and Terms..... | 14 |
| 6.2.10 Surveying | 15 |
| 6.2.11 Cyclic Sampling..... | 17 |
| 6.2.12 Data Retrieval | 18 |
| 6.2.13 Shutdown | 18 |
| 6.2.14 Graphing and Printing..... | 18 |
| 6.2.15 Excel Spreadsheets..... | 19 |

| | |
|---|------------|
| 7. Calibration | 20 |
| 7.1 Sediment and NTU Calibration | 20 |
| 7.1.1 General Guidance | 21 |
| 7.1.2 Equipment and Materials..... | 24 |
| 7.1.3 Procedure for Sediment | 24 |
| 7.2 Turbidity (NTU) Calibration | 28 |
| 7.2.1 Equipment and Materials..... | 28 |
| 7.2.2 Procedure for Turbidity | 28 |
| 8. Troubleshooting..... | 29 |
| 9. Maintenance | 32 |
| 9.1 OBS-5+ Sensor..... | 32 |
| 9.2 Pressure Sensor..... | 32 |
| 9.3 Batteries..... | 33 |
| 9.4 Pressure Housing | 33 |
| 9.5 User-Serviceable Parts..... | 33 |
| 10. Interfering Factors | 34 |
| 10.1 Particle Size..... | 34 |
| 10.2 NIR Reflectivity | 35 |
| 10.3 Particle Shape, Flocculation, and Disaggregation | 36 |
| 11. References..... | 38 |
| Appendix | |
| A. Turbidity Standards | A-1 |

Figures

| | |
|---|----|
| 4-1. Dimensions (top), sensor endcap with copper antifoulant (Cu a.f.) collars (left) and connector endcap (right) | 2 |
| 4-2. Schematic of optical system | 3 |
| 4-3. Sample calibration curves (fine and bold lines), lookup tables I, II, and III (bold curves), and sediment concentrations pf ND (open arrow) and FD (solid arrow) peaks. | 4 |
| 4-4. Calibration curves for four different sediments and SSC values for near-detector peaks (colored arrowheads). | 5 |
| 6-1. Electrical connections..... | 8 |
| 6-2. Battery installation: A) endcap removal, B) wiping, C) cable disconnect, and D) battery contact..... | 9 |
| 6-3. New data log prompt | 10 |
| 6-4. Designating your own file name and destination..... | 10 |
| 7-1. Manual (left) and automatic (right) sediment suspenders..... | 21 |
| 7-2. Lookup tables and table limits (a, b, and c)..... | 22 |
| 7-3. OBS-5+ in big black tub of clean water | 25 |
| 7-4. OBS-5+ in suspender tub..... | 26 |
| 7-5. OBS-5+ in 100 mm cup..... | 29 |

| | | |
|-------|---|----|
| 8-1. | Internal components | 31 |
| 10-1. | Effects of sediment size | 35 |
| 10-2. | Near-infrared reflectivity of minerals..... | 36 |
| 10-3. | Effects of disaggregation methods | 37 |

Tables

| | | |
|-------|--|----|
| 6-1. | Working and Maximum Depths | 7 |
| 7-1. | Schedule of Concentrations for Sediment Calibrations..... | 23 |
| 7-2. | SSC-Calculation Spreadsheet..... | 23 |
| 9-1. | Battery Life in Hours with 100% Power | 33 |
| 10-1. | Relative magnitude of the effects of sediment characteristics on OBS-5+ sensitivity | 34 |

OBS-5+ System

1. Introduction

The manual describes the features of the OBS-5+[®], as well as its use for surveys and battery-powered, internal-storage operations. Using backscatter from a 780 nm laser diode and a patented dual-detection system (U.S. Patent Number 5,796,481), a calibrated OBS-5+ measures suspended sediment concentrations, suspended solids concentration (SSC), as large as 200 g L⁻¹, which is about 10 times higher than standard OBS technology.

Before installing the OBS-5+, please study:

- Section 2, *Cautionary Statements*
- Section 3, *Initial Inspection*

2. Cautionary Statements

- Although the OBS-5+ is rugged, it should be handled as a precision scientific instrument.
- Maximum depth for the OBS-5+ is limited by the installed pressure sensor. If the maximum depths are exceeded, the pressure sensor will rupture and the housing will flood. See Section 6.1, *Instrument Setup*, for more information.
- Always orient the unit so that the OBS-5+ sensor “looks” into water clear of reflective surfaces.
- Pad the end caps that contact metal with electrical tape, neoprene, or expanded polyethylene tubes.
- Never mount the instrument by its end caps or attach anything to them. This could cause a leak.
- Always put the OBS-5+ in sleep mode when it will not be used for a while to conserve battery capacity (see Section 6.2.13, *Shutdown*).

3. Initial Inspection

- Upon receipt of the OBS-5+, inspect the packaging and contents for damage. File damage claims with the shipping company.
- Check this information against the shipping documents to ensure the correct product is received (see Section 3.1, *Ships With*).

3.1 Ships With

21304 Accessory Kit
20919 Software Support CD
ResourceDVD

4. Overview

FIGURE 4-1 shows the dimensions of the OBS-5+, the sensors in the sensor endcap, and underwater connection. Detailed specifications are provided in Section 5, *Specifications*. The OBS-5+ can be operated in Survey or Cyclic Modes. In Survey Mode, the unit sends data via RS-232 or RS-485 to a PC at two hertz, and in Cyclic Mode, it logs as many as 200,000 scans of time, date, depth, and $g\ L^{-1}$ in flash memory (one sample per hour for 23 years). When sampling continuously, the unit will run about 125 hours on three C-size alkaline batteries in 20°C water (about two weeks of eight-hour survey days). When using the instrument for surveys, the data are captured by a PC running the *OBS-5+ software*. Pressure is measured with a silicon strain-gauge pressure sensor and the depth of the instrument is calculated from water density and barometric pressure entered by the operator.

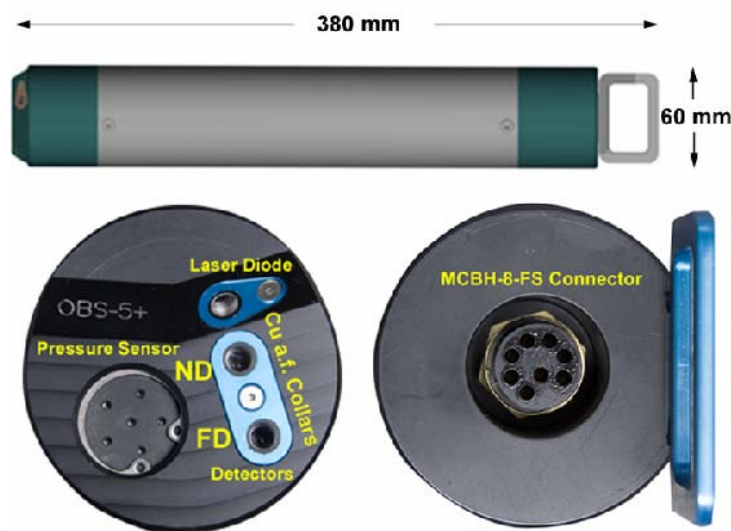


FIGURE 4-1. Dimensions (top), sensor endcap with copper antifoulant (Cu a.f.) collars (left) and connector endcap (right)

4.1 Optics

The heart of the OBS-5+ is an optical system comprised of a near infrared (NIR) laser diode and a photodetector positioned 10 mm from the laser, called the near detector (ND), and one mounted 25 mm from the laser, called the far detector (FD), see FIGURE 4-2. The detector acceptance-cone angle is 55°, which means that photons must enter the detector sapphire windows at angles less than 27.5° to be detected. The laser light is collimated to a 3 mm by 1 mm elliptical beam with convergence < 2.5 mrad. The angle between the NIR beam and detector acceptance-cone axes is 45°. The OBS-5+ can detect light scattered by particles illuminated by the NIR beam at angles between 105° to 165°. With its automatic-power-control circuit, the laser diode provides stable optical power over time and the 0 to 30°C operating temperature range.

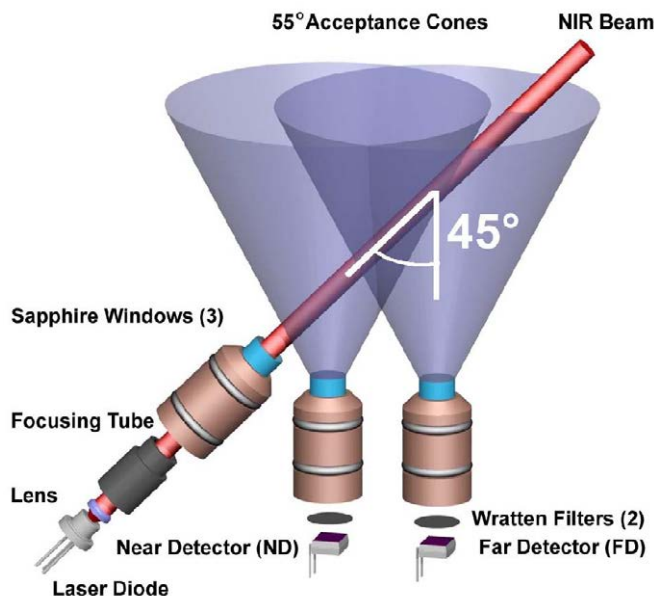


FIGURE 4-2. Schematic of optical system

4.2 SSC-Measurement Principle

In FIGURE 4-2, suspended particles scatter light from the NIR beam onto the near and far detectors, and suspended solids concentration (SSC) is estimated with signals counts from these detectors by a microcontroller, using a set of logic rules and lookup tables derived from calibration data. Counts are the digital equivalents of the ND and FD signals and are proportional to backscatter intensity. Sample calibration curves relating ND and FD counts to sediment concentration in g L^{-1} are shown on FIGURE 4-3. As particle concentration increases from 0, the ND and FD signals rise to maxima at peak concentrations, shown by the red (open) and blue (solid) arrowheads above the x axis. Beyond the peak sediment concentrations, light attenuation is the dominant factor controlling the light level at the detectors, and so the ND and FD counts decline. The scattered NIR must travel farther to be detected by the FD than by the ND, and therefore the peak of the FD curve occurs at a lower sediment concentration than the peak of the ND curve. The instrument exploits these peak offsets to estimate sediment concentration. Using either the ND or FD counts, whichever is indicated by the logic rules, the microcontroller does a spline interpolation between calibration values to derive an SSC value. It then combines this value with time and pressure data, and sends the results to a PC.

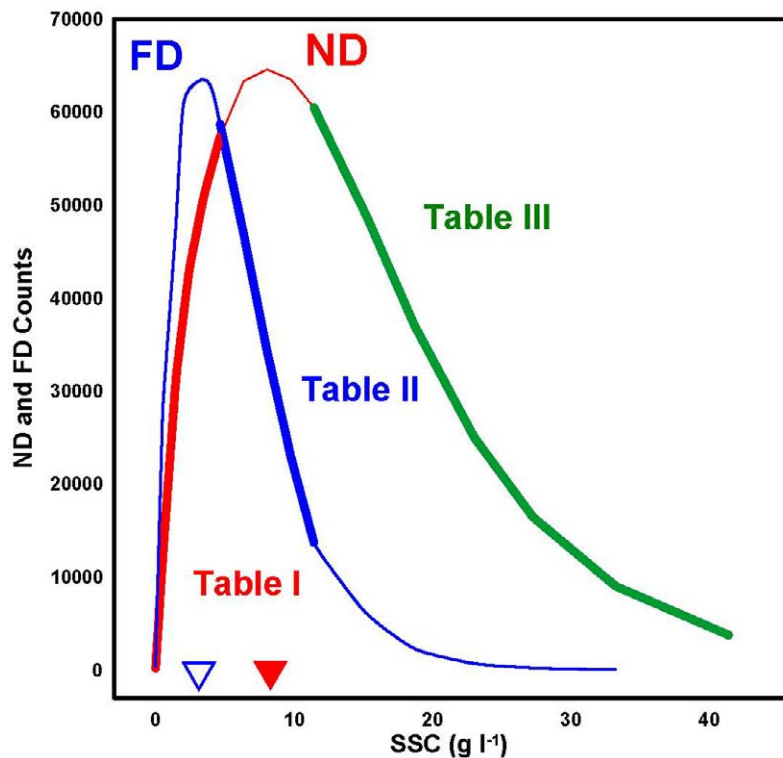


FIGURE 4-3. Sample calibration curves (fine and bold lines), lookup tables I, II, and III (bold curves), and sediment concentrations of ND (open arrow) and FD (solid arrow) peaks.

The concentrations associated with the ND and FD peaks depend on sediment characteristics as shown by the variety of response curves and the colored arrowheads on FIGURE 4-4. Other sediment characteristics being equal, such as shape and NIR reflectivity (see Section 10, *Interfering Factors*), larger particles produce higher peak concentrations and greater OBS-5+ measurement ranges than smaller particles.

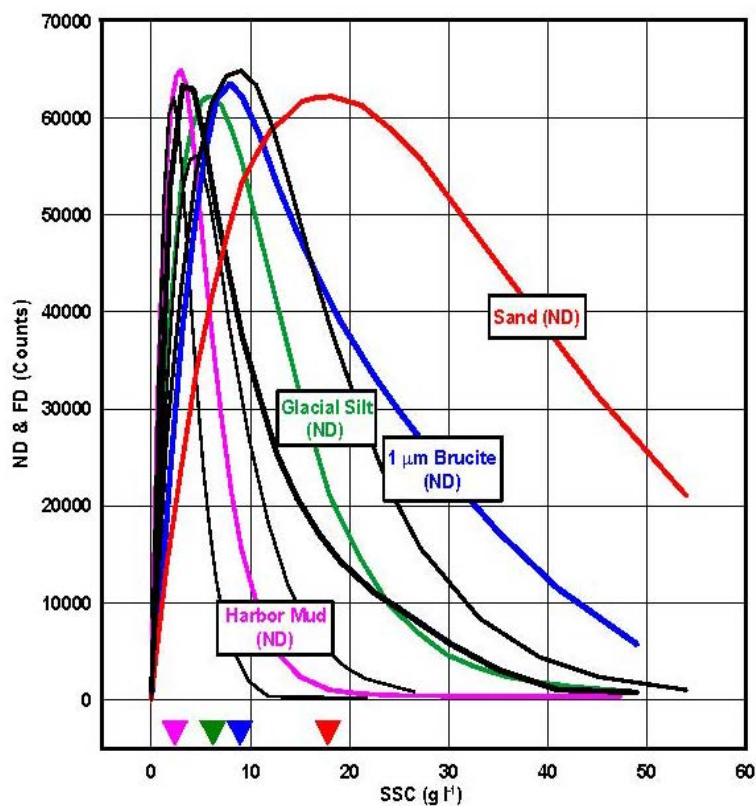


FIGURE 4-4. Calibration curves for four different sediments and SSC values for near-detector peaks (colored arrowheads).

5. Specifications

Features:

- Connects directly to a PC—no datalogger needed
- Operates up to six months on three C-cell batteries
- Monitors high sediment concentrations (up to 200g/L)
- Logs depth, wave height, wave period, temperature, and salinity
- Records 200,000 scans of data in the OBS-5+ flash memory

5.1 Measurement Range

| | |
|-----------------------------------|--------------------------------|
| Mud ($D_{50}=20\mu\text{m}$): | 0 to 50,000 mg/l |
| Sand ($D_{50}=250\mu\text{m}$): | 0 to 200,000 mg/l |
| Pressure ¹ : | 0 to 10, 20, 50, 100, or 200 m |
| Turbidity: | 0.4 to 1,000 NTU |

5.2 Accuracy

| | |
|-------------------|--------------------|
| Mud: | 2.0% of reading |
| Sand: | 4.0% of reading |
| Pressure: | 0.5% of full scale |
| Turbidity: | 1.5% of full scale |

5.3 OBS-5+ Sensor

| | |
|---|-------------------|
| Laser wavelength: | 780 nm |
| Scattering angles (clean water): | 105° to 165° |
| Drift over time: | <30 ppm per month |
| Drift over temperature: | <200 ppm per °C |

5.4 Other Data

| | |
|--|--------------------|
| Maximum sampling rate: | 25 Hz |
| Maximum data rate: | 2 Hz |
| Data capacity: | 8 MB/200,000 lines |
| Battery capacity: | 8 A h |
| Maximum battery life²: | 3,000 hrs |
| External supply voltage: | 6 to 18 Vdc |
| External supply current: | 55 mA |
| Serial-data protocols: | RS-232 & RS-485 |
| Maximum housing depth: | 300 m (984 ft) |
| Operating temperature range: | 0° to 40°C |
| Storage temperature range: | –20° to 70°C |

5.5 Dimensions

| | |
|----------------------------|---------------------------------|
| Length / diameter: | 380 mm (15 in) / 60 mm (2.4 in) |
| Weight: | 2.04 kg (4.5 lb) |
| Weight (submerged): | 1.02 kg (2.3 lb) |

¹ Range depends on pressure sensor option chosen.

² Sampling interval is two hours and duration is two minutes.

6. Operation

6.1 Instrument Setup

6.1.1 Mounting Suggestions

CAUTION

Maximum depth for the OBS-5+ is limited by the installed pressure sensor. If the maximum depths are exceeded, the pressure sensor will rupture and the housing will flood.

The depth limits are listed in TABLE 6-1.

| TABLE 6-1. Working and Maximum Depths | | |
|--|----------------------|----------------------|
| Pressure Sensor | Working Depth | Maximum Depth |
| 5 Bar | 0 to 50 meters | 75 meters |
| 10 Bar | 0 to 100 meters | 150 meters |
| 20 Bar | 0 to 200 meters | 300 meters |
| (1 Bar = 10 dBar \cong 10 meters of fresh water) | | |

The following precautions should be followed to ensure the unit can function properly and is not lost or damaged.

- Always orient the unit so that the OBS-5+ sensor “looks” into water clear of reflective surfaces.
- Pad the endcaps that contact metal with electrical tape, neoprene, or expanded polyethylene tubes.
- Never mount the instrument by its endcaps or attach anything to them. This could cause a leak.

6.1.2 Surveys

The OBS-5+ will usually be towed with a cable harness for surveys. The serial cable can tow the OBS-5+ without a depressor weight or vane as long as the connector is strain relieved. Strain relief can be provided by attaching the cable to the stainless steel housing (FIGURE 4-1) with a cable grip and a length of 3 mm (1/8 in) wire rope. Install a cable clamp with a 0.5 m wire rope to the serial cable, and clamp the wire rope to the pressure housing with two stainless steel hose clamps, providing a small loop of slack cable to absorb towing forces. The unit can be powered with an external battery, as shown on FIGURE 6-1, and the serial output can be transmitted by either RS-232 or RS-485 protocols. The latter protocol is recommended for cable lengths greater than 25 m. An RS-485/232 serial converter is provided with each unit. An RS-232 to USB converter is an available option.

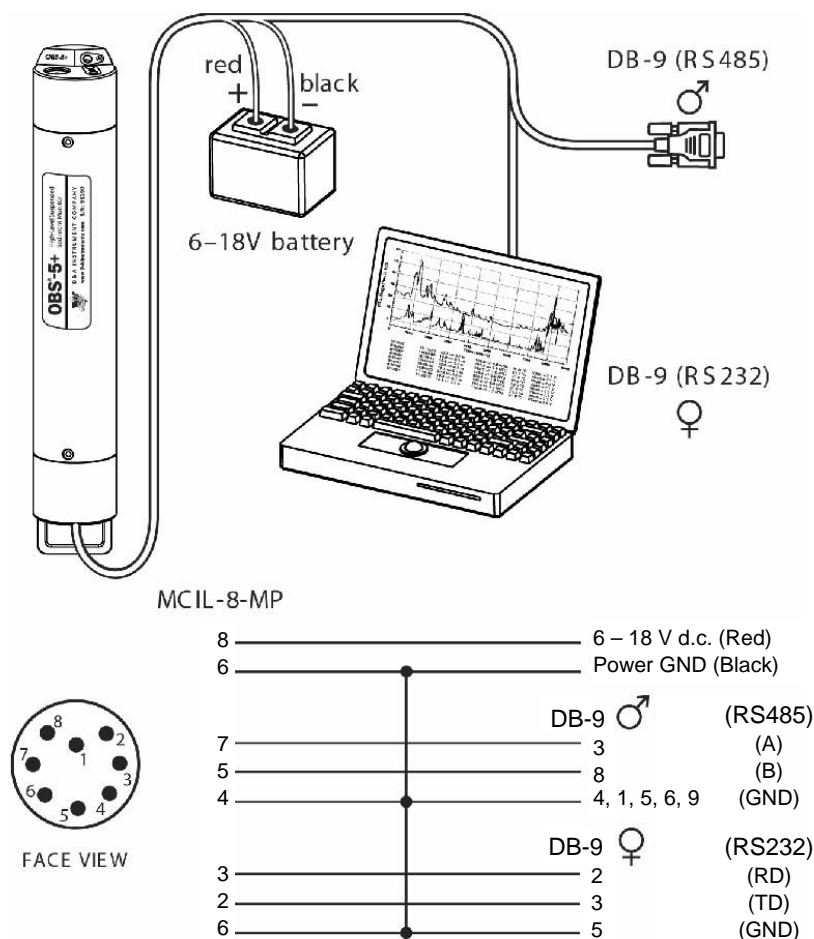


FIGURE 6-1. Electrical connections

6.1.3 Logging Data

In applications where a survey cable is impractical or when the OBS-5+ must be attached to an instrument frame, it can be powered by the internal batteries and the data can be logged by the data flash memory. See instructions for Cyclic Mode sampling in Section 6.2.11, *Cyclic Sampling*.

6.1.4 Battery Installation

Remove the set screws from the endcap with the handle and connector. If the unit was submerged during the previous day, turn the sensor end up, so water around the O-rings can drain out when the endcap is removed, FIGURE 6-2 (A). Pull endcap out and disconnect the inline connector (B). Wipe water from the inside wall of the housing tube with a paper towel (C). Turn the connector end up and push the ridge on the battery sliding contact until the spent batteries pop out (D). Insert new batteries with the positive terminal (+) toward the sliding contact. Push the batteries down and slide the contact over the top of them and against the housing wall. Inspect the O-ring in the cap, clean and grease or replace it if necessary, and replace the cap and set screws.

For extended deployment time, lithium batteries are a good alternative to alkaline batteries. Campbell Scientific sells a C-cell-sized battery spacer (pn 21905) that allows lithium C-cell batteries to be used with the OBS-5+. Lithium C-cell batteries have a higher voltage than their alkaline counterparts, necessitating the spacer. Campbell Scientific does not sell lithium C-cell batteries.

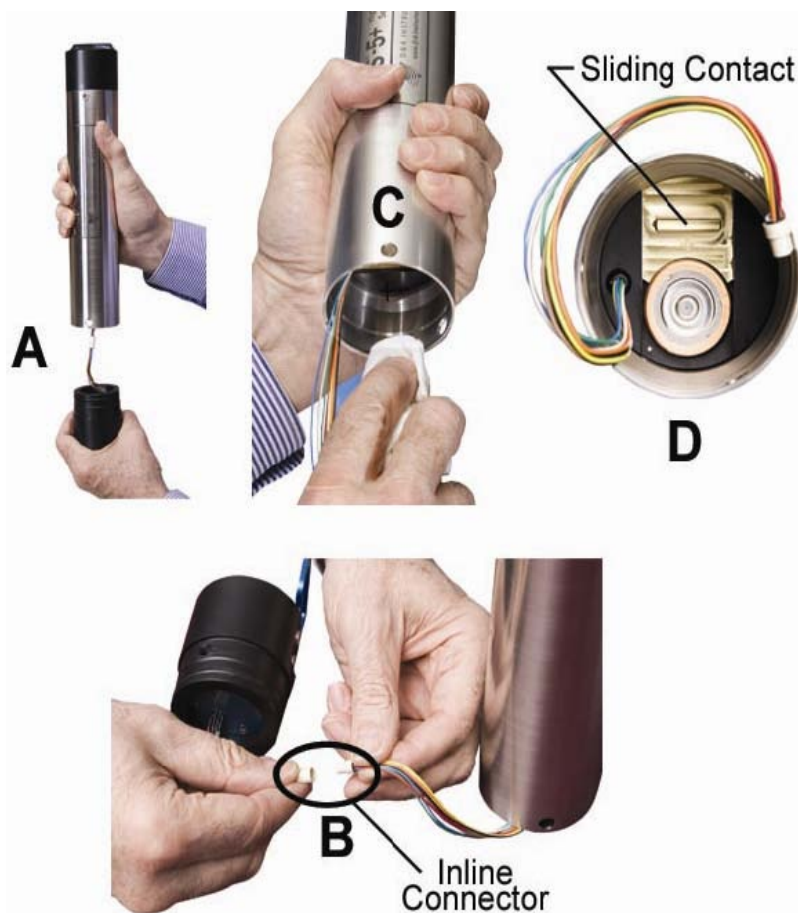


FIGURE 6-2. Battery installation: A) endcap removal, B) wiping, C) cable disconnect, and D) battery contact

6.2 OBS-5+Utility Software

6.2.1 Software Installation

Insert the CD and select “Install OBS-5+ Utility”. Follow the installation wizard to install the software. The *OBS-5+ Utility* is the GUI interface with the OBS-5+. As part of the installation, there are several additional files included.

This section explains how to program and operate the unit with the *OBS-5+ Utility*. It covers: 1) turning the OBS-5+ ON and OFF and testing the sensors, 2) selecting sensors and data statistics, 3) scheduling data logging, 4) recording

data with a PC or uploading data from the OBS-5+, 5) importing data into a spreadsheet, and 6) plotting data with *OBS-5+ Utility*.

6.2.2 Running the OBS-5+ Utility

- 1) Set PC to the time standard for your project.
- 2) Select the OBS-5+ program to start the *OBS-5+ Utility* and open the **Data Window** and **Toolbar** with the **View** pull-down menu.
- 3) The *OBS-5+ Utility* will create a new data log file and prompt you to accept the name (see FIGURE 6-3). Files are automatically named with Greenwich Date and Time as follows: OBS5+_20010808_172433.log. Or you can create your own file name and destination by choosing **No** (see FIGURE 6-4). Data received from the OBS-5+ while it is connected to the PC will be stored in this file.



FIGURE 6-3. New data log prompt

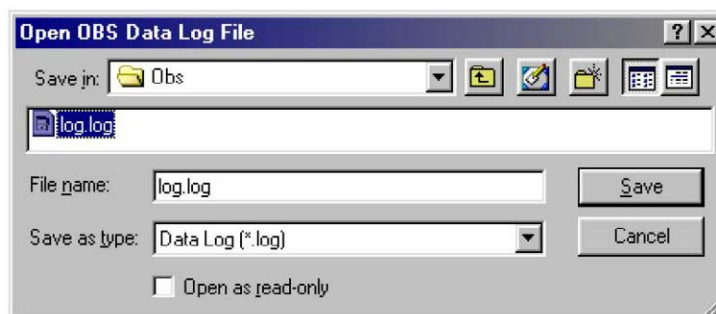




FIGURE 6-4. Designating your own file name and destination

- 4) Connect the OBS-5+ to a PC with the test cable (FIGURE 6-1).
- 5) Click  **Connect/Disconnect** to get a green light and synchronize the OBS-5+ clock with your PC by clicking .



6.2.3 Pull-Down Menus

The *OBS-5+ Utility* has four pull-down menus for **File**, **OBS-5+**, **View**, and **Help**.




The **File** menu allows you to select the location and formatting for OBS-5+ files. Files can be opened as plots or ASCII text that can be brought into spreadsheet programs or text editors. Plot files display OBS-5+ data graphically in the main GUI window.


The **OBS-5+** menu is used to: 1) put the instrument into a low-power **Sleep**, 2) wake it up if it is sleeping (**Wakeup**), 3) make a **Barometric Correction** (see Section 6.2.7, *Water Density and Barometric Corrections*), 4) view a list of calibration tables, 5) set detector gains (**Set Gains**), 6) **Retrieve an Active Table**, 7) **Retrieve detector Gains**, or 8) switch to **RS-485** serial communication.

The **View** menu controls the display on your PC. Switches are provided for:

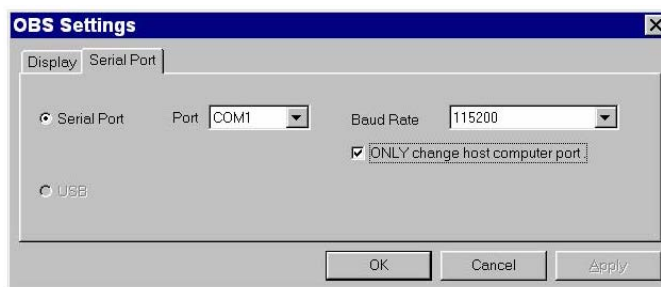
- **Toolbar** toggles the icons ON and OFF.
- **Status Bar** toggles the status bar at the bottom of the screen ON or OFF.
- **Data Window** pops the data window into view.

6.2.4 Communication Settings

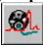

The  **Plot and Port Settings** button has a serial port tab for configuring the communication settings. The default settings are: 115 kB, 8 data bits, no parity, no flow control. These settings will work for most applications and with most PCs. In order to pick a slower baud rate and avoid data-transfer errors, select the desired rate from the dialog box and click **Apply**. The rate

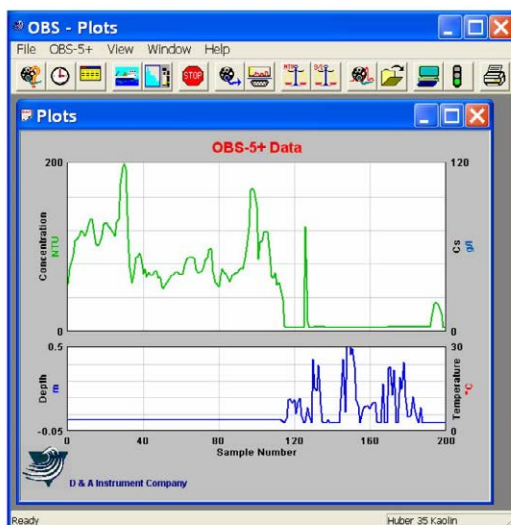
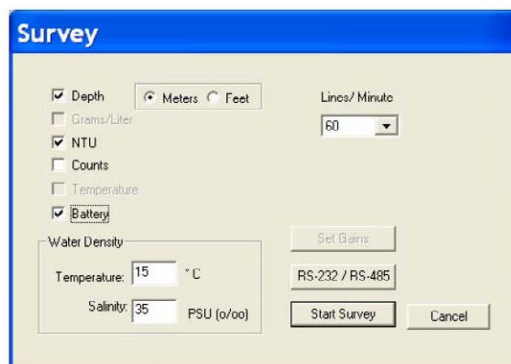
adjustment takes two seconds. If your PC is set to the wrong rate for some reason, use the check box to select **ONLY change host computer port**. Then click **Apply** and the  **OBS Settings** button.



If you get the OBS-5+ information box, the baud rate of the unit is synchronized with your PC. If you don't get an information box, repeat the above procedure until communication is established.

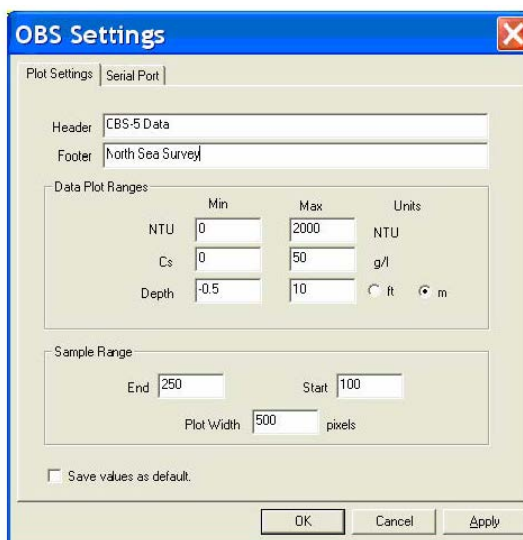


6.2.5 Testing Sensors

- 1) Before daily operations and deployments, verify that the instrument works by clicking  **Open Plot**, and then clicking  **Survey**. Select all sensors and click **Start Survey**. An example plot of data is shown below.



- 2) Wave your hand in front of the OBS-5+ sensor; the turbidity and SSC levels on the top plot will fluctuate as data scrolls across the plot.
- 3) Blow into the pressure sensor or press your thumb on it to compress air on the diaphragm (FIGURE 4-1). A small elevation in the pressure signal will occur (bottom plot).
- 4) Click  **Stop** and then  **OBS Settings** to view time, serial numbers, depth corrections, and software versions.



OBS Settings

Plot Settings | Serial Port

Header: CBS-5 Data

Footer: North Sea Survey

| | Min | Max | Units |
|-------|------|------|---|
| NTU | 0 | 2000 | NTU |
| Cs | 0 | 50 | g/l |
| Depth | -0.5 | 10 | <input type="radio"/> ft <input checked="" type="radio"/> m |

Sample Range

End: 250 Start: 100

Plot Width: 500 pixels

☐ Save values as default.

OK Cancel Apply

6.2.6 Monitoring Turbidity (NTU)

The OBS-5+ was calibrated and factory-certified using AMCO Clear, U.S. EPA-approved turbidity standards (www.gfschemicals.com). In order to measure turbidity, the electronic gain of the near detector is set to the calibration value and the active lookup table is overridden. Consequently, the unit cannot simultaneously measure SSC (g L^{-1}) and NTU when either g L^{-1} or NTU is selected. You must choose one or the other.

6.2.7 Water Density and Barometric Corrections

Instrument depth is estimated from pressure and it is important to set the water temperature and salinity so the OBS-5+ can correct for water density and calculate depth correctly. The sensor measures absolute pressure so the instrument must also correct for barometric pressure. Be sure to do this while the OBS-5+ is at the surface. Depending on the magnitude of barometric pressure fluctuations at the site and the desired accuracy, you may want to correct data for atmospheric effects using barometric pressure simultaneously recorded at a nearby site.

6.2.8 Sample Statistics

The individual measurements are not recorded in the data flash memory and you must select the sample statistics that will be recorded. Two types of statistics can be selected for OBS-5+ measurements.

- 1) Measures of central tendency, including the mean and median.
- 2) Measures of variation or spread in sample values, including the standard deviation (σ) and cumulative percentages, such as X_{25} and X_{75} (where X is the depth, SSC, or NTU values).

The mean is the arithmetic average of the values ($\sum x / n$), where $\sum x$ is the sum of the sample values (x) and n is the number of values (sample size). The median (X_{50}) is the value that exceeds 50% of the sample values and is the best measure of central tendency when a sample has outliers. The percentages X_{25} , X_{50} , X_{75} , etc., exceed 25, 50, and 75% of the sample values.

6.2.9 Sampling Modes and Terms

The following terms concern OBS-5+ sampling schedules.

Interval: The time in seconds between the start of one sample and the beginning of the next. The interval must be longer than the duration to allow for statistical computations and data storage. The computer will prompt you if you select an interval that is too short.

Duration: This is the length of time in seconds that the OBS-5+ will measure its sensors. The duration must always be less than the interval. The minimum duration is five seconds and the maximum is 2,048 seconds (0.57 hour).

Rate: Rate is the frequency of sampling for the duration of measurements. All sensors are sampled at the same rate, typically 2, 5, 10, or 25 times per second (Hz).

Power: This indicates the percentage of time over the duration of a sample that sensors are ON. Higher power levels mean larger samples and better statistics, but shorter battery life. Lower levels spare the batteries but result in more random noise in sample statistics (lower signal-to-noise ratios, SNR).

Sample Size: The number of measurements made by a sensor in each interval; sample size equals rate times duration.

The main factors to consider when setting up OBS-5+ **Cyclic** sampling schedules include:

- Sampling interval needed to characterize the processes of interest (for example, water level fluctuations, flood and transport duration, tidal conditions, dredge operations, etc.).
- Maximum sediment concentration.
- Statistical requirements, such as sample size and sampling rates.
- Battery capacity.

The goal is to pick a sampling scheme that gets essential information about the process of interest without taking too many samples or sampling too often. Inefficient sampling produces excessive battery consumption and a data avalanche with unnecessary processing. Sampling schedules are set with the **Interval**, **Duration**, and **Rate** parameters. **Interval** sets how often data are

recorded. Select the longest interval that will show the changes in turbidity and water depth that you wish to investigate. **Rate** sets measurement frequency. The quicker turbidity and depth change, the higher the sampling rate should be to get a stable average value for a sample. Finally, **Duration** sets how long sensor outputs will be averaged. For example, with an interval of 30 seconds and a duration of five seconds, the OBS-5+ will make measurements for five seconds starting every 30 s. The sample size would be $5 \times 25 = 125$ measurements for a rate of 25 Hz. Always select duration and rate to give a sample size of at least 30, and to reduce random sampling noise below 50% of its maximum value, select them to give a size greater than 200.



Survey: Select the survey mode when operating the unit with a cable connection to a PC and when high data rates are desired. Data can be logged with a PC at rates up to 120 lines per minute (2 Hz).



Cyclic Sampling: Use cyclic sampling to record data internally in the 8 MB, flash memory at regular intervals; for example, every 1, 5, 15, or 30 minutes. Depending on the number of sensors measured and the statistics selected, the OBS-5+ can log as many as 200,000 lines of data, one per hour for 23 years, including time, date, depth, NTUs, and SSC.

6.2.10 Surveying

Click the **OBS-5+** menu and select **Barometric Correction**.

CAUTION

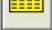
Do not do this while the OBS-5+ is submerged.

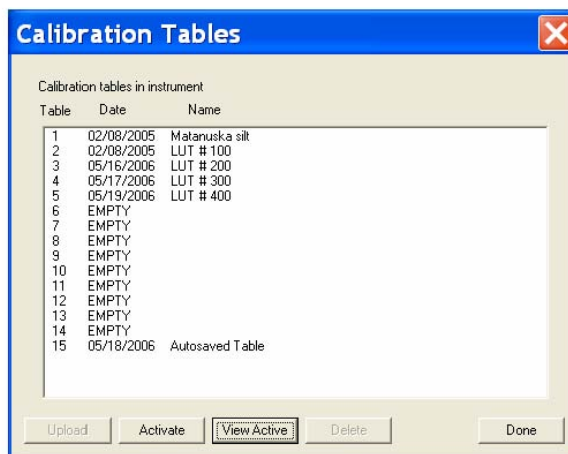
The OBS-5+ takes about five seconds to measure the surface pressure and compute a barometric correction.




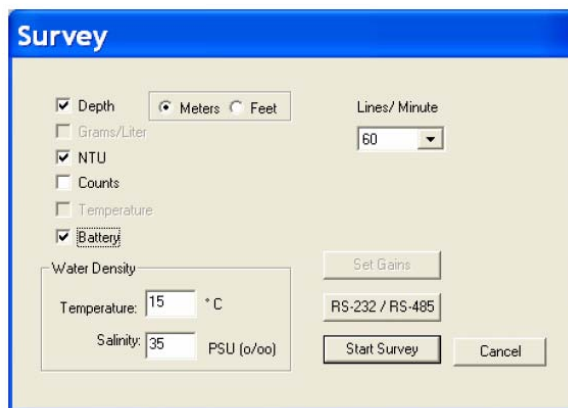
- 1) Connect the OBS-5+ to PC with survey cable and start *OBS-5+ Utility*.
- 2) Open the **Data Window** with the **View** pull-down menu.



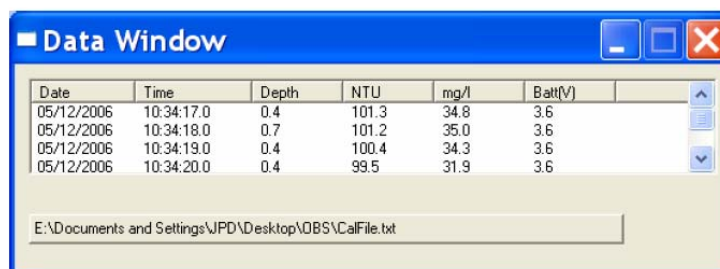
- 3) Click the  lookup table icon and select a calibration table for your survey. The last active table will be used otherwise.




- 4) Click  **Survey** to select: sensors, lines per minute, and depth units (**Meters** or **Feet**). Set temperature and salinity for the survey area.



- 5) Click **Start Survey** and check the data flow in the **Data Window**.





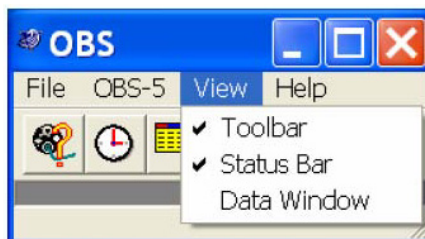
- 6) A file for logging data was created when you started the *OBS-5+ Utility*.

You can review data at any time with  **Open** and import the log file directly into an Excel spreadsheet for post-survey processing and plotting (see Section 6.2.15, *Excel Spreadsheets*).

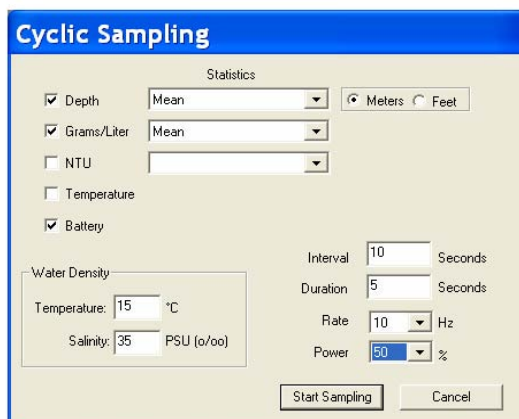
6.2.11 Cyclic Sampling

This mode is for logging data at regular intervals such as 1, 10, 15, 30, etc. minutes, for example.

- 1) Request **Barometric Correction** from the **OBS-5+** menu. **Be sure to do this while the OBS-5+ is at the surface** (see Section 6.2.10, *Surveying*).
- 2) Open the **Data Window** with the **View** pull-down menu.
- 3) Activate the lookup table for your survey area with  and  activate buttons (Step 3, Section 6.2.10, *Surveying*).





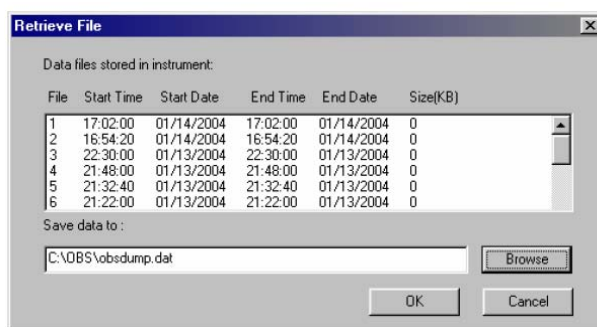
- 4) Click **Cyclic Sampling** and select sensors, statistics, depth units (meters or feet), water temperature, and salinity.
- 5) Select **Interval**, **Duration**, **Rate**, and **Power** level; see recommendations in Section 6.2.9, *Sampling Modes and Terms*.



- 6) Click **Start Sampling** to begin logging data and watch a few lines as they are displayed in the data window to be sure the schedule is what you want. Unplug test cable; install dummy plug and locking sleeve. The instrument is ready for deployment.

6.2.12 Data Retrieval

- 1) Remove dummy plug and connect OBS-5+ to PC with test cable (FIGURE 6-1).
- 2) Run *OBS-5+ Utility*.
- 3) Open the **Data Window** to verify that the instrument is transmitting data.
- 4) Click  to end data collection and use  **Offload Data** to save data in a file.
- 5) Highlight the data with the start and end times you want.
- 6) Click **Browse**, select a destination file and click **OK**.



- 7) Wait for the progress bar to disappear and examine data as a plot or text file (see Section 6.2.5, *Testing Sensors*).




6.2.13 Shutdown

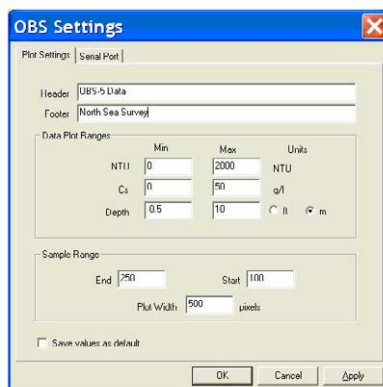
From the **OBS-5+** menu, select **Sleep**.

6.2.14 Graphing and Printing

- 1) Use **File** menu to select how the data file will be opened.



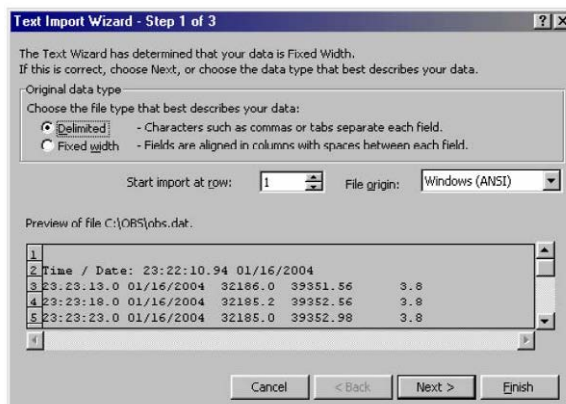
- 2) Click  **Open** and select a file to view.  **Print** will print a graph when **Open As Plot** is selected. To print a text file, select **Open As Text**, and use the Word Pad file print functions. For spreadsheet operations, see the next section. The  **Plot and Port Settings** is used for setting up your plot looks.

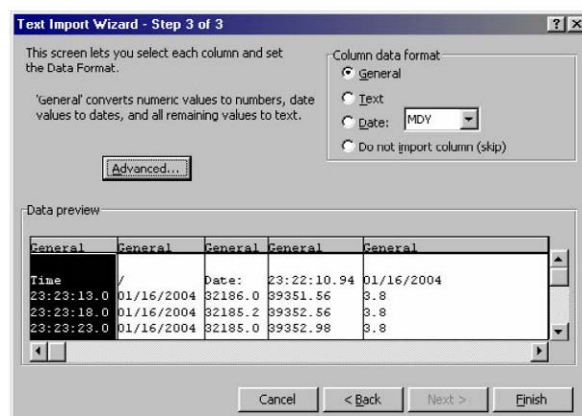


- 3) Use the **Min** and **Max** and **Sample Range (End and Start)** values to bracket the data you need on the graph. **Plot Width** allows the graph to be sized to fit a PC screen. On the depth plot, select **Max** = 0 and **Min** = the maximum depth to display depth increasing downward.

6.2.15 Excel Spreadsheets

To make an Excel spreadsheet from OBS-5+ data, start Excel and set file type to **All**. Open a data file and select **Delimited** in Step 1 of 3 of the Text Import Wizard. Click **Next >** and select the delimiter **Space**; check **Treat consecutive delimiters as one**; and {none} for **Text qualifier**. In Step 3 of 3, select the **General Column data format** and click **Finish**.





7. Calibration

7.1 Sediment and NTU Calibration

In addition to the concentration, the size, shape, and reflectivity of suspended sediment particles vary from one location to another and will influence OBS-5+ measurements. When these sediment characteristics change, they will produce apparent changes in SSC by themselves unless sediment calibrations are performed. All sediments produce a unique set of calibration curves like the examples shown in FIGURE 4-4. The sediment calibration procedure is complicated, and for a modest fee, we will calibrate an OBS-5+ sensor with your sediment. Call for a quotation to perform this service.

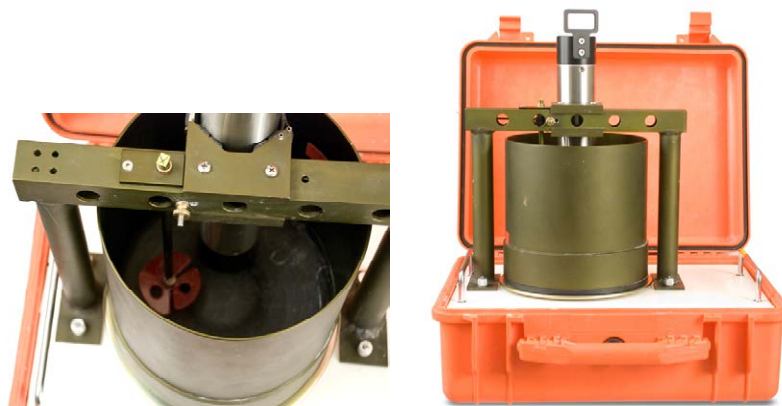



FIGURE 7-1. Manual (left) and automatic (right) sediment suspenders

7.1.1 General Guidance

The OBS-5+ uses response curves from the near and far detectors to create three lookup tables like those shown on FIGURE 4-3 and FIGURE 7-2. The objective of sediment calibration is to create lookup tables from the sediment you will monitor. The OBS-5+ can store lookup tables for as many as 14 sediments. The fifteenth table is reserved for auto-saved archives.

To view a calibration table, click  button (step 3 in Section 6.2.10, *Surveying*), highlight a table number and click on the **Activate** button; then click **View Active**. The calibration data table contains all the information needed by the OBS-5+ to interpolate SSC values from the detector signals. From left to right, the column lists: 1) SSC values (g L^{-1}), 2) ND counts, 3) 2nd derivatives for ND curve, 4) FD counts, and 5) 2nd derivatives for FD curve.

| | | | | | |
|------------------------|----------|----------------|------------|-------------|--------|
| 123.21 | 0.000 | 451.41 | 0.0000 | 425.98 | 0.0000 |
| 0.501 | 13510.52 | -17301.5910 | 35046.02 | -62919.7617 | |
| 1.001 | 23844.23 | -271.0313 | 42457.50 | -6247.4863 | |
| 2.013 | 41365.46 | -9230.5449 | 61603.84 | -23181.8145 | |
| 2.522 | 47772.28 | -93967.6448742 | -5271.4722 | | |
| 3.024 | 52295.63 | -9539.7529 | 65034.65 | -9944.4629 | |
| 4.044 | 58982.40 | -3451.7842 | 59519.80 | -5344.7144 | |
| 4.555 | 60293.12 | 4380.4968 | 54329.34 | -310.0596 | |
| 5.059 | 61853.11 | -7832.0693 | 48840.70 | -1446.4006 | |
| 5.559 | 62259.38 | -354.0411 | 43253.76 | 2716.6611 | |
| 7.072 | 61468.19 | -1770.9656 | 25317.53 | 1033.1894 | |
| 9.068 | 55859.01 | -373.8298 | 15643.44 | 1402.9340 | |
| 18.002 | 21142.20 | 587.2285 | 1045.30 | -160.0504 | |
| 20.358 | 14880.47 | -6.3774 | 638.98 | 85.0598 | |
| 23.914 | 9940.74 | 346.0475 | 401.02 | -9.1036 | |
| 26.861 | 6996.89 | -11.4200 | 412.88 | 12.2914 | |
| 29.799 | 4688.24 | 133.9209 | 399.77 | -1.4521 | |
| 35.663 | 2450.52 | 17.3530 | 389.94 | 1.0552 | |
| 38.998 | 1908.26 | 13.6257 | 389.96 | 0.0552 | |
| 66.825 | 528.80 | -1.1528 | 389.55 | 0.0159 | |
| 88.422 | 461.09 | 0.0000 | 389.41 | 0.0000 | |
| 16:30:00.00 05/19/2006 | | | | | |
| 71.12 | 9 | 17 | 17 | | |
| lat # 400 | | | | | |

During a calibration, the first table, highlighted in red, is created from the rising limb of the near detector response between zero counts and point “a” (FIGURE 7-2). The second table, bold blue curve, is used for mid-range SSC values. It is derived from the descending limb of the far detector curve between points “a” and “c”. High SSC values are estimated from a third lookup table, indicated by the bold green line and point “b”, and are derived

from the descending limb of the near detector curve. A calibration consists of a set of 15 to 30 calibration points that each includes an SSC value, a near detector count, and a far detector count.

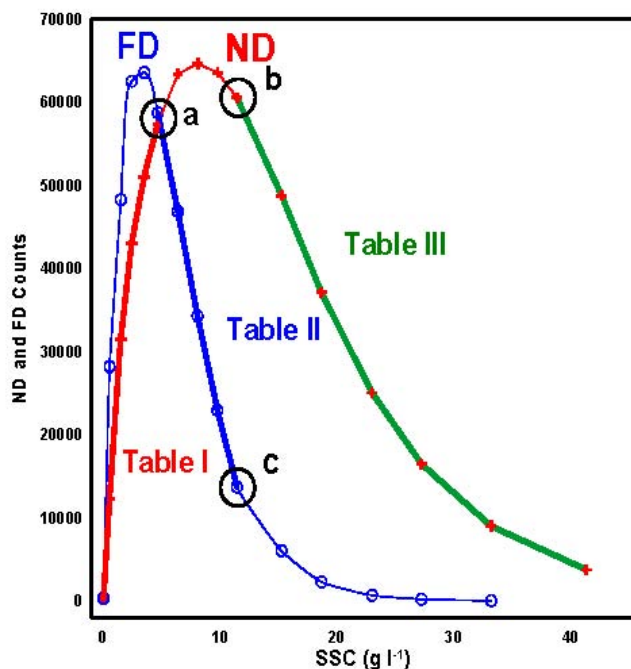


FIGURE 7-2. Lookup tables and table limits (a, b, and c)

Six to ten calibration points are needed to define each table. For the lookup tables to function properly, the peaks in the ND and FD curves must be within $\pm 2,500$ counts of one another, and to maximize resolution, the peak heights should be between 62,000 and 64,500 counts. Start with the schedule shown in TABLE 7-1 and adapt it to your sediment as required during the calibration procedure.

Sediment preparation is a critical factor in calibration quality. Use dry material whenever possible because it can be accurately weighed. Keep in mind that mixing, grinding, and sieving can produce smaller sediment than you will measure in the field and that the OBS-5+ is very sensitive to particle size (see Section 10, *Interfering Factors*). This means that disaggregation can produce measurement errors. Vigorous disaggregation with a sonic probe, for example, can produce smaller particles that result in more ND and FD counts per unit of SSC than less aggressive methods. An OBS-5+ calibrated with the former material will underestimate SSC in the field.

TABLE 7-1. Schedule of Concentrations for Sediment Calibrations

| MUD ($D_{60} < 62 \mu\text{m}$) | | | Sand ($D_{60} > 62 \mu\text{m}$) | | |
|--|---------------------------------|-----------------------------------|---|----------------------------------|-----------------------------------|
| Low SSC (0-5 g/l) | Mid-range (5-20 g/l) | High SSC (> 20 g/l) | Low SSC (0-10 g/l) | Mid-range (10-40 g/l) | High SSC (> 49 g/l) |
| 0.0 | 5 | 25 | 0.0 | 12 | 50 |
| 1.0 | 6 | 30 | 2.0 | 14 | 60 |
| 1.5 | 7 | 40 | 3.0 | 15 | 70 |
| 2.0 | 8 | 50 | 4.0 | 20 | 80 |
| 2.5 | 9 | 60 | 5.0 | 25 | 90 |
| 3.0 | 10 | | 6.0 | 30 | 100 |
| 3.5 | 15 | | 8.0 | 35 | 140 |
| 4.0 | 20 | | 10.0 | 40 | 160 |

The operator can control the electronic gain of the detector circuits to optimize the instrument for his sediment. This can be done with the **ND Gain** and **FD Gain** boxes in the **OBS-5+** program during the calibration using the + and – buttons to toggle gain up or down. The unit automatically scales all calibration counts to match the selected gain. Set the initial ND and FD gain values to 16, starting with the third SSC value in TABLE 7-2, adjust the gain to keep the ND and FD counts in the range of 50,000 to 60,000.

CAUTION

While calibration points can be deleted at any time, never start a new SSC value until you are satisfied with the current values and gain setting.

The FD counts will peak first at around 2 to 7 g L⁻¹ and the ND will peak between 5 to 20 g L⁻¹. Set the water volume and sediment density for your calibration in cells D1 and E1 (default volume and density are 3.0 l and 2,650 g L⁻¹). Every time sediment is added to the suspender, enter the grams added to column **A** and read the current SSC value in column **C**.

TABLE 7-2. SSC-Calculation Spreadsheet

| | A Grams Added | B Total Grams | C Cs (g/l) (g/l) | D Water Volume (l) | E Sediment Density (g/l) |
|----------|------------------------------|------------------------------|---------------------------------|-----------------------------------|---|
| 1 | 0.00 | 0.00 | 0.00 | 3.0 | 2650 |
| 2 | 1.00 | 1.00 | 0.33 | | |
| 2 | 2.00 | 3.00 | 1.00 | | |
| 3 | 3.00 | 6.00 | 2.00 | | |
| 4 | 4.00 | 10.00 | 3.33 | | |

Sediment concentrations can also be calculated manually with the following equations:


$$g/l = \frac{M_s}{V_i + \left[\frac{M_s}{\rho_s} \right]}$$


$M_s = \text{Sediment mass (g)}$
 $V_i = \text{Initial volume (liters)}$
 $\rho_s = \text{Sediment density}$
 (usually $2.65 \times 10^3 \text{ g/l}$)

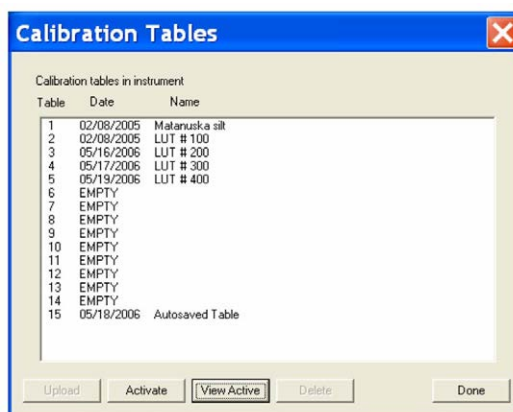
7.1.2 Equipment and Materials

- Dry, completely disaggregated bottom sediment or suspended matter from the monitoring site
- Large black, neoprene or polyethylene tub
- 1-gallon (4 l) brown Nalgene polypropylene bottle with top cut off
- 1-liter volumetric flask
- Hand-drill motor (manual suspender)
- Mixing propeller (manual suspender)
- Scale with 10 mg accuracy
- Automatic suspender (optional)
- Tea cup with round bottom and teaspoon

7.1.3 Procedure for Sediment

- 1) Put batteries in the OBS-5+ and connect it to a PC with test cable using the RS-232 plug (FIGURE 6-1).
- 2) Start *OBS-5+ Utility* program; wake the OBS-5+; and click the  **OBS Settings** button to verify its response.

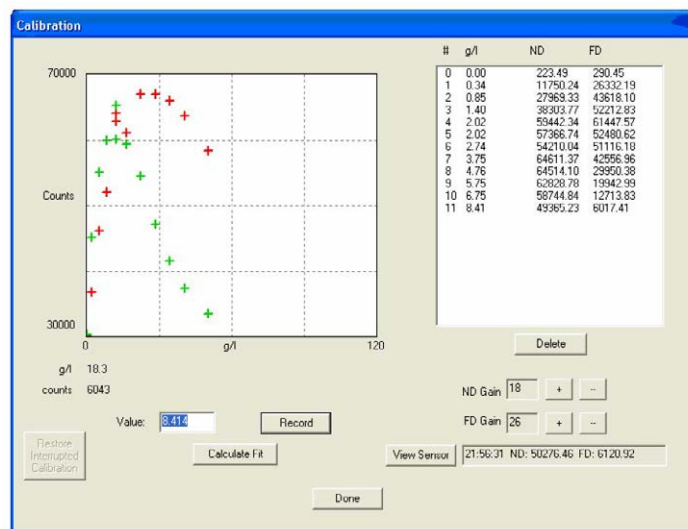
- 3) Click the  button to view the list of lookup tables stored in the unit. Select an **EMPTY** Table number for the sediment calibration.



- 4) Start the calibration with the button and secure the unit in a big black tub filled with clean tap water (FIGURE 7-3). The sediment-calibration dialog will appear (the initial display will not show the red and green symbols).



FIGURE 7-3. OBS-5+ in big black tub of clean water



- 5) Enter 0.001 in the value box and click the **Record** button to log the clear-water data point. The unit will take 1,200 measurements in 60 seconds. When the process is complete, the data appear in the data table and the ND (red) and FD (green) points will be plotted on the calibration graph. If you are satisfied with the data, mount the unit in the suspender.
- 6) Position the OBS-5+ so that it produces the minimum FD signal in clear water (FIGURE 7-4).

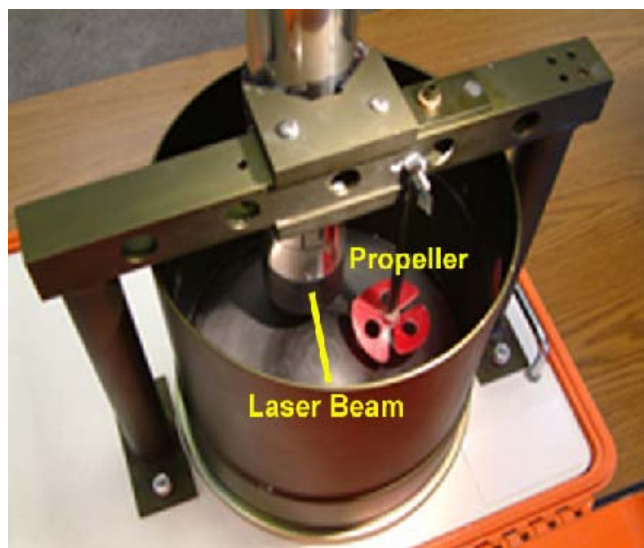


FIGURE 7-4. OBS-5+ in suspender tub

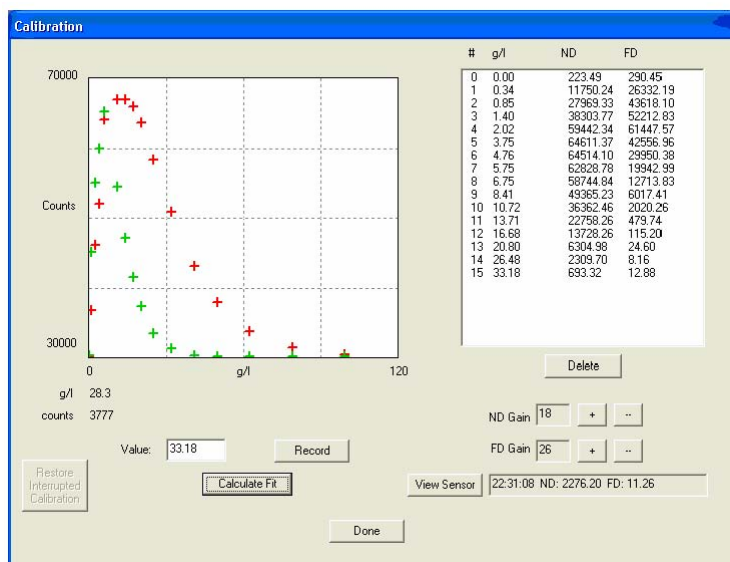
- 7) Weigh the first increment of sediment with the electronic balance (see TABLE 7-1) and transfer it to a tea cup with a rounded bottom.

- 8) Withdraw about 10 ml of water from the suspender and add it to the tea cup containing the dry sediment. Stir the water-sediment mixture into a homogeneous slurry, breaking up clumps of sediment as you go.
- 9) Pour the sediment slurry into the suspender and rinse the cup with suspender water until it is clean. Make sure all the sediment gets from the cup to the suspender.
- 10) Compute the SSC value in g L^{-1} for the current calibration point with SSCcalculator spreadsheet (TABLE 7-2), or use the SSC formula, Section 7.1.1, *General Guidance*, and enter the SSC value in the **Value** box.
- 11) Click the **View Sensor** button to see the ND and FD counts before they are recorded. Adjust the gain if necessary, then click the **Record** button.
- 12) The second calibration pair of points will appear on the graph and the data will be listed in the table. If the data for the current point is unacceptable for any reason, too much or too little gain for example, highlight the data line number (#) and click the **Delete** button. Adjust the gain and record it again with the same SSC value.

CAUTION

Do not proceed to the next SSC value until you are satisfied with the current data. Once you add sediment to the suspender, you cannot remove it.

- 13) Repeat Steps 7 through 12 for the remaining SSC values following the guidelines provided above. When the calibration data is complete, the data table and plot will look like the ones shown below.



- 14) To compute the lookup tables, click the **Calculate Fit** button and supply the requested information. Referring to FIGURE 7-2, pick point 'a' by counting the number of data points on the ND curve from the origin (0, 0) to the first point beyond where the ND and FD curves cross, 6 in FIGURE 7-2. Select 'b' at the first point on the falling limb beyond the ND peak where it becomes linear, 10 on FIGURE 7-2. Point 'c' is the first point in

the FD curve where it starts decay exponentially, also 10 on FIGURE 7-2
9. Points 'b' and 'c' will usually have the same numerical value.

- 15) Save the table in the **EMPTY** Table number selected at Step 3.

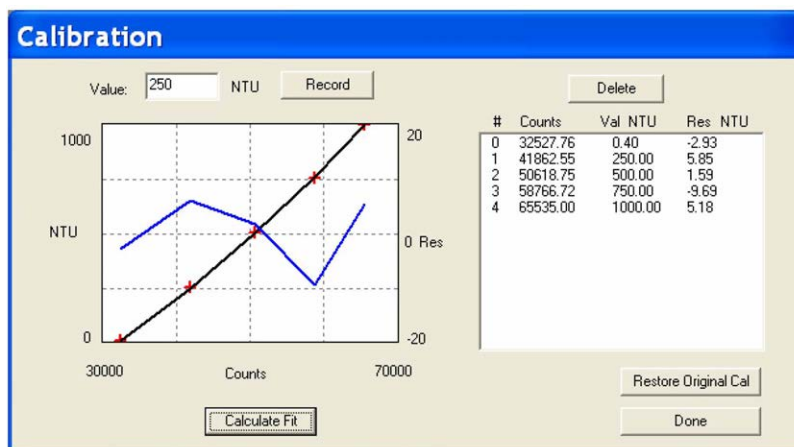
7.2 Turbidity (NTU) Calibration

7.2.1 Equipment and Materials

- Large black, neoprene or polyethylene tub
- 100 mm test cylinder (www.deslinc.com, No. TC4)
- AMCO Clear turbidity standards (GFS No. 8429, 8430, and 8431, www.gfschemicals.com)

7.2.2 Procedure for Turbidity

- 1) Put batteries in the OBS-5+ and connect it to a PC with test cable using the RS-232 plug (FIGURE 6-1).
- 2) Start the *OBS-5+ Utility* software; wake the OBS-5+; and click the **OBS Settings** button to verify its response.
- 3) Use the **OBS-5+** pull-down menu, select **Gain** and set ND and FD gain to 2. This is the setting used for the factory calibration.
- 4) Start the calibration with the button and secure the unit in a big black tub filled with clean tap water (FIGURE 7-3). The NTU-calibration dialog will appear.



- 5) Enter 0.3 in the value box and click the record button to log the clear-water data point. The unit will take 1,200 measurements in 60 seconds. When the process is complete, the data appear in the data table and the point will be plotted on the calibration graph. If you are satisfied with the data, mount the unit in a 100 mm calibration cup as shown on FIGURE 7-5.

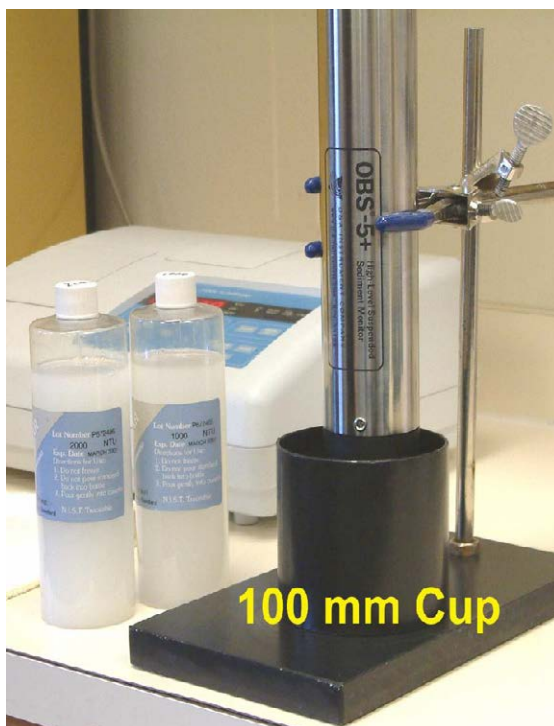


FIGURE 7-5. OBS-5+ in 100 mm cup

- 6) Add enough 250-NTU standard to cover the sensor end (FIGURE 4-1) and swipe bubbles off the sapphire windows with your finger. Click the **Record** button.
- 7) Repeat Step 6 for the 500 and 1,000 NTU standards.
- 8) Review the data table and graph, and if they look satisfactory, click the **Calculate Fit** button.
- 9) Verify that the fit curve passes through the calibration points and that the residuals are less than 10 NTU. Then click the **Done** button.

8. Troubleshooting

This section will help isolate problems that can be easily fixed, such as cable-continuity, processor reset, and battery replacement, or more serious ones, such as sensor, computer and electronic malfunctions, and damaged mechanical parts that will require assistance. The problem symptoms are shown in bold text.







Power failed because of contact corrosion or a broken power wire.

Check for a broken red wire connecting the battery tube and circuit board. Green powder or tarnish on the battery contact parts indicates salt-water corrosion. Remove the electronics by removing the set screws from the sensor endcap and sliding it out of the pressure housing. Pull battery-contact-retainer pin out with needle-nose pliers and slide the contact from its track. Clean the

corroded surfaces of the contact and track with a scouring pad and reassemble unit.

Unit does not communicate with PC.

There are several possible causes for this symptom.

- 1) The batteries are dead.
- 2) The OBS-5+ will not wake up.
- 3) The test/umbilical cable is damaged or improperly connected
- 4) The OBS-5+ and PC are set to different baud rates or communication protocols (for example, RS-232 versus RS-485).
 - Click  **Plot and Port Settings** and check port settings on the serial port tab. The default baud rate is 115.2 kbps. If the PC is not set to this speed, follow the steps in Section 6.2.4, *Communication Settings*, to set it.
 - If the OBS-5+ still fails to respond, try changing PC speeds and clicking  **OBS Settings** until communication is established (for example, 57.6, 38.4, 19.6, 9.6 kbps, etc.). If this fails, switch the PC back to 115.2 kbps and do the following steps.
 - Reconnect the cable and click .
 - Replace the batteries and click .
 - If you have a survey cable, connect instrument to external power and click .
 - Remove the unit from the pressure housing and press and release the RESET button. Click .

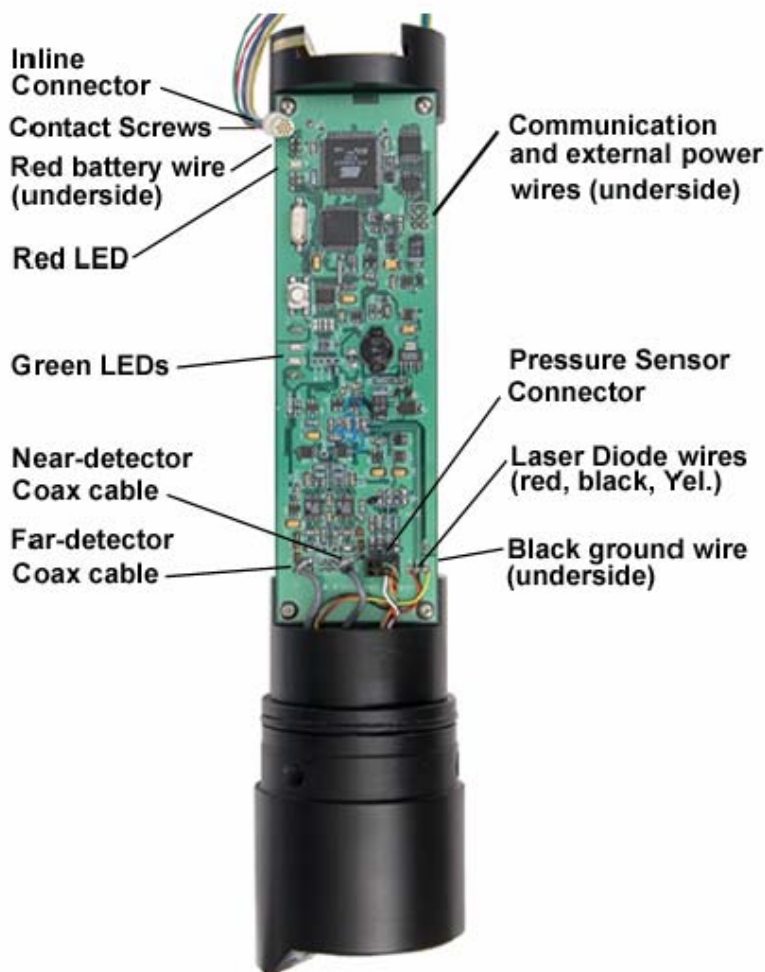



FIGURE 8-1. Internal components

OBS-5+ or pressure sensor malfunction.

- Open unit and inspect for: 1) broken sensor wires, and 2) loose pressure sensor connector (FIGURE 8-1).
- Check sensor power by clicking  **Survey** and selecting all sensors; the green LEDs should illuminate. If they do not, the sensor power circuit may not be working.
- If the depth sensor reads high and does not change, it may need to be cleaned (see Section 9.2, *Pressure Sensor*).
- If the sensors appear to be in working order, the digitizer or microcontroller may be damaged. Such problems require factory service.

Bright sun near the surface (< 2 m) or black-colored sediments cause erroneous OBS readings.

Do not survey in shallow water between 10:00 and 14:00 local time and avoid areas with suspended black mud; see Section 10.2, *NIR Reflectivity*.

OBS-5+ indicates different NTU values in the field than other turbidimeters.

Not all turbidity meters read the same! OBS-5+ sensors are checked with U.S. EPA-approved AMCO Clear turbidity standards before leaving our factory (see Appendix A). Other turbidimeters will read different NTU values on natural water samples.

OBS-5+ indicates different suspended sediment levels in the field than in the laboratory.

This results from a change in sediment size or color (see Section 10, *Interfering Factors*). You may have to perform a field calibration with water samples.

9. Maintenance

9.1 OBS-5+ Sensor

The sapphire windows over the laser diode and the detectors must be kept clean to make accurate SSC measurements (FIGURE 4-1 and FIGURE 4-2). A gradual signal decline over a period of days to weeks indicates fouling with mud, oil, or biological material. Regular cleaning with a water jet, mild detergent and warm water, or a scouring pad will remove most contaminants encountered in the field. A cloth with solvent or mineral spirits can be used to remove oil and grease. However, do not use MEK, benzene, toluene, acetone, TCE, or electronic cleaners as they could damage the epoxy bond between the sapphire and the optic bushings. At the conclusion of each survey or deployment, clean the OBS-5+ sensor. If thick bio-fouling has developed, scrape the material off the window with a flexible knife then swipe it with a scouring pad.

9.2 Pressure Sensor

The silicon strain-gauge pressure sensor is located under a perforated disk and spring-clip that protects the Hastelloy diaphragm isolating it from water (FIGURE 4-1). Do not touch the diaphragm with tools or pointed objects, as the instrument will leak if it is pierced. Clean the sensor with a water jet directed at the disk after each survey or deployment to flush sediment from between the disk and the sensor. Do not allow sediment to dry on the sensor diaphragm because dry sediment will reduce accuracy and is difficult to wash off. To clean the diaphragm, remove the spring clip with tru-arc pliers and the disk with plastic tweezers, then gently wipe sediment off the diaphragm with a wet cotton-tipped swab. Replace the disk and spring clip and flush with a water jet.

9.3 Batteries

The unit runs on three, C-size, alkaline batteries. Buy the expensive ones with the longest expiration date (“use before May 20XX”). While operating continuously, the OBS-5+ will run 125 hours (15, eight-hour surveys) in Survey Mode and for as long as 3,000 hours in the Cyclic Mode.

CAUTION

Always put OBS-5+ to sleep for storage to conserve battery capacity (see Section 6.2.13, *Shutdown*).

Refer to FIGURE 6-2 for battery installation. Battery life will depend on the percentage of time the unit is sampling. TABLE 9-1 shows battery life as a function of sample duration and interval to assist with planning your sampling schedule (see **Power** in Section 6.2.9, *Sampling Modes and Terms*).

| TABLE 9-1. Battery Life in Hours with 100% Power | | | | | |
|--|------------|-----------|------------|------------|-------------|
| Interval (s) | 10 100% | 60 50% | 60 100% | 120 50% | 120 100% |
| 60 | 480 | NO | NO | NO | NO |
| 600 | > 3000 | 2050 | 780 | 1180 | 400 |
| 900 | > 3000 | > 3000 | 1100 | 2040 | 600 |
| 1800 | > 3000 | > 3000 | 1930 | > 3000 | 1100 |
| 3600 | > 3000 | > 3000 | > 3000 | > 3000 | 1930 |

9.4 Pressure Housing

The pressure housing and O-ring seals require little maintenance other than careful inspection every six months and service before moored deployments.

- 1) Disassemble O-ring seals and inspect mating surfaces for pits and scratches.
- 2) Inspect O-rings for cuts and nicks; replace if necessary.
- 3) Clean O-rings and mating surfaces with a cotton swab and alcohol. Remove fibers from groove and mating surfaces then grease O-rings Molykote® Compound 55 and reassemble.

9.5 User-Serviceable Parts

Alkaline C cells and the components of the 21304 Accessory Kit can be purchased as replacement parts. Campbell Scientific manufacturing part numbers and product descriptions follow:

pn 20993 End-cap O-ring, Parker 2-136
 pn 20989 Optic Bushings O-ring, ARP5 7.5 X 1.2 mm OBN
 pn 21141 S.S. End-cap Screws, 5/16" X 3/8"
 pn 21120 Dummy Plug, Subconn® MCD8M
 pn 21122 Plug Locking Sleeve, Subconn® MCDLSF

pn 4576 Alkaline C-Cells Batteries
 pn 20806 OBS-5+ Test Cable, 2 m (6.5 ft)
 pn 21381 7-piece Allen Wrench Set, 5/64 to 3/16 Ball End
 pn 21139 SS Hex Socket Screw, #2-56 x .187

10. Interfering Factors

Changes in sediment concentration (SSC) are the primary cause for OBS-5+ output fluctuations in the environment. In some monitoring areas, however, factors other than SSC, will cause the OBS-5+ to indicate SSC variation that are invalid and which the user does not wish to measure. These factors are called interferences because they cause apparent shifts in SSC that are not real. Interferences include particle size, shape, reflectivity, flocculation, and disaggregation. This section summarizes some of the important ones that you might encounter while using an OBS-5+.

Sensitivity is the change in light scattering intensity, indicated by ND and FD counts, per unit change in SSC or an interfering factor. It is therefore a good measure of relative interference. An interference that reduces sensitivity will cause SSC to appear to decrease and one that makes an OBS-5+ more sensitive will cause the opposite effect. Interfering factors are ranked by the ratio of the sensitivity change that is caused when the factor changed over its full range in the environment. For example, the size of suspended sediment particles in the environment ranges from about 0.5 to 125 μm . This range causes relative OBS sensitivity to change from 2 to 0.008, (see next section), giving a factor of 250. Interfering factors ranked in this way are summarized in TABLE 10-1. The ranking shows, for instance, that the size of suspended particles can affect OBS-5+ measurements more than particle shape or NIR reflectivity by a factor of 25. Interferences can be tolerated so long as the resulting errors fall within acceptable limits.

| TABLE 10-1. Relative magnitude of the effects of sediment characteristics on OBS-5+ sensitivity | | | | |
|--|---------------------------|--------------|---------------------|---------------------|
| | Interfering Factor | | | |
| | Size | Shape | Reflectivity | Flocculation |
| Relative Magnitude | <250 | 10 | 10 | 2 |

10.1 Particle Size

The trend of the line on FIGURE 10-1 shows that relative sensitivity declines at a rate inversely proportional to the particle diameter. The graph provides a useful method for estimating the relative effect of grain size on OBS-5+ sensitivity. Using this method, for example, one gram of silt with a grain size of 10 microns, suspended in a liter of water, might produce an OBS signal of 55,000 counts, whereas a gram of sand per liter with a grain size of 100 microns would produce only 5,500 counts, with other factors such as shape and reflectivity being the same.

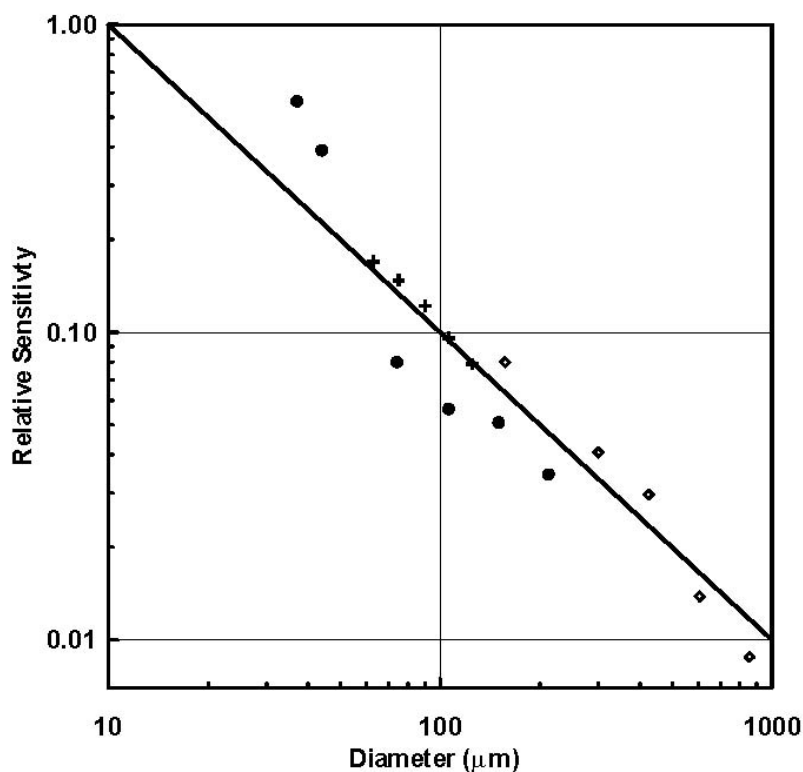


FIGURE 10-1. Effects of sediment size

10.2 NIR Reflectivity

The output of an OBS-5+ will increase with the NIR reflectivity of suspended sediment independent of SSC. This can degrade accuracy when unknown reflectivity changes occur during a monitoring campaign. For instance, when a dredge cuts through a layer of oxidized, light-brown, reflective mud into an underlying layer of black anoxic mud, the OBS-5+ will indicate that SSC of mud stirred up by the cutter has dropped even when it has not. The relative signal level per unit of SSC varies from a low of about one for dark, non-reflective sediment to a high of about ten for white, reflective sediment (FIGURE 10-2). In areas where sediment color changes with time, more than one calibration curve may be required to measure SSC with an OBS-5+.

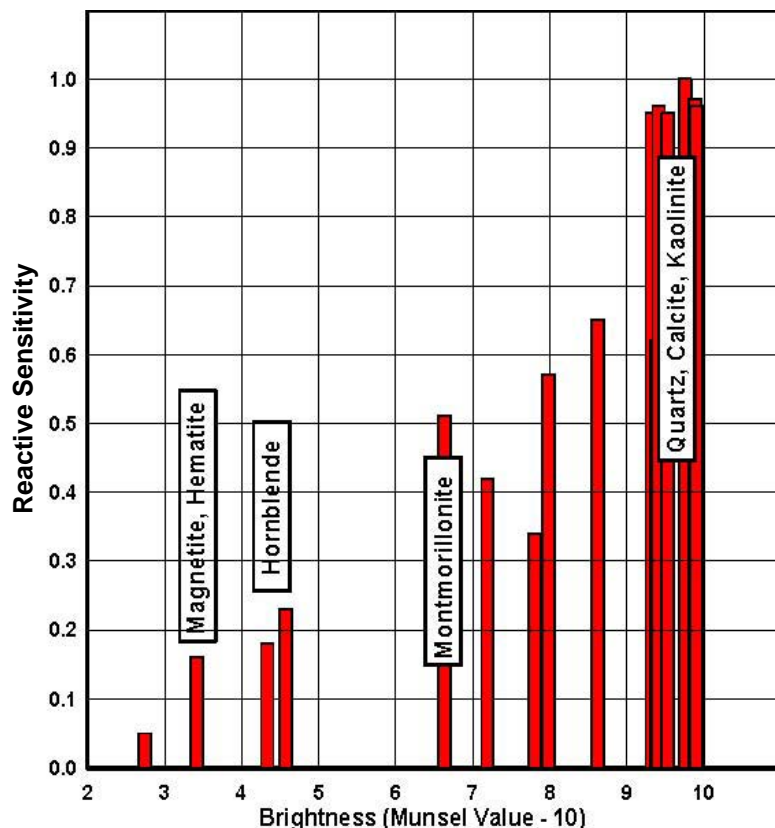


FIGURE 10-2. Near-infrared reflectivity of minerals

10.3 Particle Shape, Flocculation, and Disaggregation

Particle shape can be an interfering factor. The sensitivity of an OBS-5+ sensor to plate-shaped particles is about ten times higher than it is to spherical particles. Disaggregation of dry sediment by grinding can cause the sediment to become finer grained than it was in the environment and this will bias a sediment calibration. A good example of how much OBS-5+ readings can change as a result of the disaggregation is shown in FIGURE 10-3. The slope of each line on the graph indicates the sensitivity of an OBS sensor when calibrated with sediment disaggregated in a particular way. The more mechanically aggressive a disaggregation method is, the more sensitive the sensor will be. Sediments susceptible to disaggregation effects include: 1) organic-rich estuarine mud, 2) cohesive and flocculated suspended matter, and 3) clay-rich sediment.

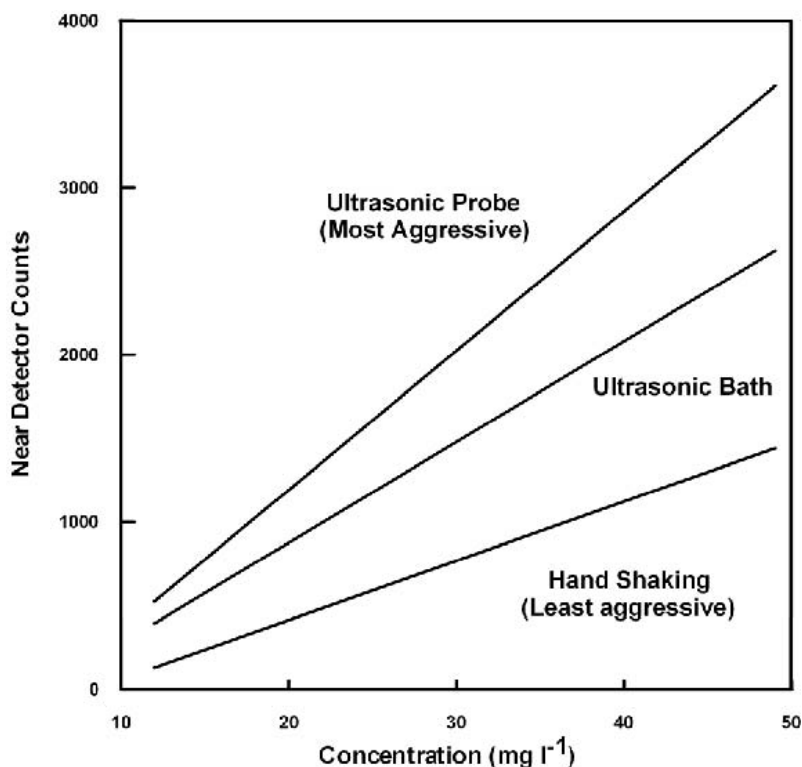


FIGURE 10-3. Effects of disaggregation methods

Finally, flocculation of clay particles in estuaries can affect sensitivity by causing small particles to clump together into larger ones to which the OBS-5+ is less sensitive. For example, when a dredge works into a zone of saline water where flocculation occurs, an OBS-5+ can indicate less than the actual level of SSC.

A summary of interference effects on OBS-5+ measurements follows.

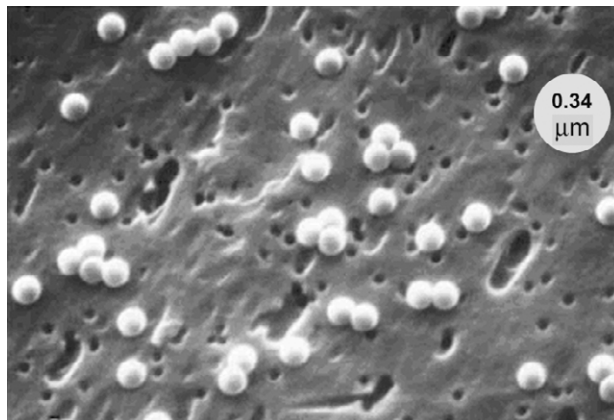
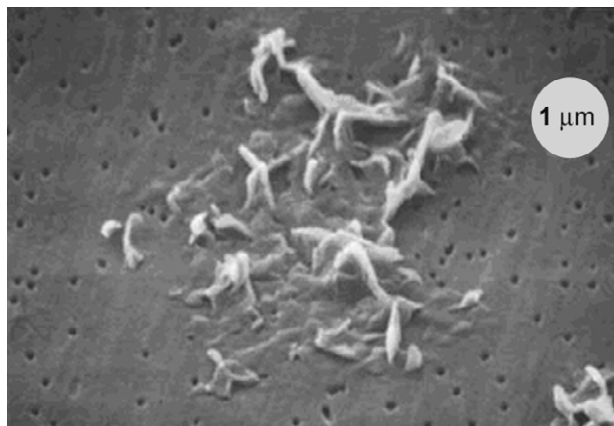
- 1) Any action that makes sediment particles smaller, such as disaggregation, or larger, aggregation, during the calibration process than they will be in the environment will cause SSC to appear to increase or decrease when there has been no actual change.
- 2) Processes in the environment that make sediment particles larger than they were during a calibration will produce an apparent decline in SSC. Conversely, an environmental process that makes particles smaller, such as deflocculation or disaggregation, will cause SSC to appear to increase.
- 3) When particles become more or less reflective than they were during calibration, or their shape changes, SSC will appear to decrease or increase independent of an actual SSC change.

11. References

- Black, K.P., M.A. Rosenberg. 1994. Suspended Sand Measurements in a Turbulent Environment: Field Comparison of Optical and Pump Sampling. *Coastal Engineering*, 24, pp. 137-150.
- Conner, C.S. and A.M. De Visser. 1992. A Laboratory Investigation of Particle Size Effects on an Optical Backscatterance Sensor. *Marine Geology*, 108, pp. 151-159.
- Downing, John. 2006. 25 Years with OBS Sensors: The Good, the Bad, and the Ugly. *Continental Shelf Research*.
- Downing, John. 2005. Turbidity Monitoring. In: ***Environmental Instrumentation and Analysis Handbook***. John Wiley & Sons, New York, pp. 511-546.
- Downing, John. 1998. Suspended Particle Concentration Monitor. U.S. Patent Number 5,796,481.
- Downing, John and Reginald A. Beach. 1989, Laboratory Apparatus for Calibrating Optical Suspended-solids Sensors. *Marine Geology*, 86, pp. 243-249.
- Gibbs, R.J. 1978. Light Scattering from Particles of Different Shapes. *Journal of Geophysical Research*, 83, pp. 501-502.
- Gibbs, R.J., E. Wolanski. 1992. The Effects of Flocs on Optical Backscattering Measurements of Suspended Material Concentration. *Marine Geology*, 107, pp. 289-291.
- Sutherland, T.F., P.M. Lane, C.L. Amos, and John Downing. 2000. The Calibration of Optical Backscatter Sensors for Suspended Sediment of Varying Darkness Level. *Marine Geology*, 162, pp. 587-597.

Appendix A. Turbidity Standards

AMCO Clear, supplied by GFS Chemicals (www.gfschemicals.com), is an approved calibration standard and is the one we use to certify our instruments. It is made from styrene divinylbenzene (SDVB) microspheres. SDVB spheres have a median size and standard deviation of $0.28\mu\text{m}$ ($\sim 1/5$ that of formazin particles) and $0.10\mu\text{m}$ respectively and a refractive index of 1.56. As shown on the SEM image, they are dimensionally uniform. SDVB standards are formulated especially for OBS meters and cannot be used with different meters. Superior physical consistency of AMCO Clear results in a more precise calibration standard, giving standard errors less than 1% compared to 2.1% for formazin and better linearity, 0.15 NTU compared to 0.32 for formazin.



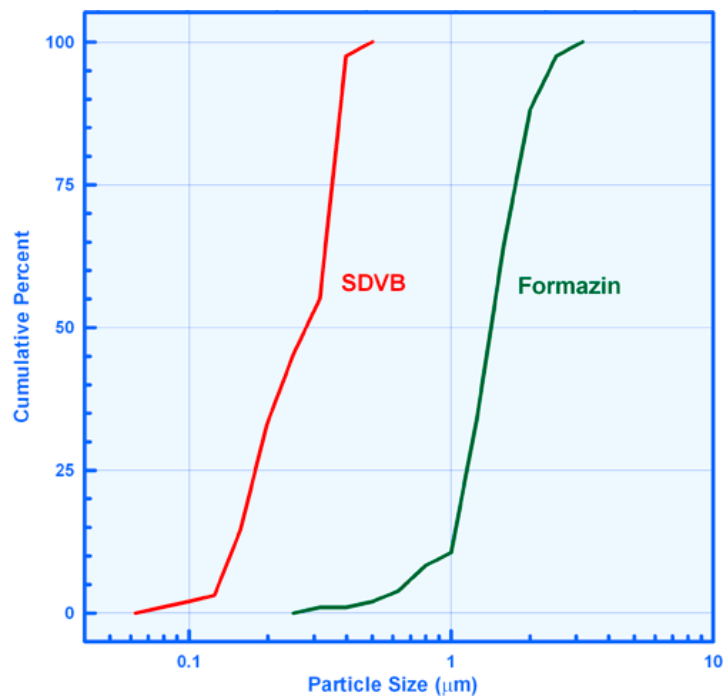
(Photos courtesy of GFS Chemicals)

The key benefits of SDVB standards are: 1) $< 1\%$ lot-to-lot variation in turbidity; 2) consistent optical properties from 10 to 30°C ; 3) guaranteed one-year stability; 4) mixing and dilution are not required; and 5) they are not toxic. Two drawbacks are that SDVB standards can only be used with the instruments for which they are made and they are more expensive than formazin. For example, one liter of 4000-NTU standard costs about twice as much as an equivalent amount of 4000-NTU formazin. Our instruction manuals explain how to use turbidity standards and the instructions provided by the suppliers tell how they should be handled.

In the USA, formazin is a primary standard for the calibration of turbidimeters. The median particle size of formazin is 1.5 μm ; the standard deviation of size is 0.6 μm (see size distribution graph); and as shown by the SEM images below, formazin particles have many different shapes. The preparation, storage, and handling of formazin will affect its accuracy and stability. Recommended formazin storage times are listed in the accompanying table. Working standards are prepared by volumetric dilution of 4000-NTU stock formazin with distilled water. For example, a 2000 NTU calibration standard is made by mixing equal volumes of stock formazin and distilled water.

| Turbidity (NTU) | Maximum Storage Time |
|-----------------|----------------------|
| 1 – 10 | 1 day |
| 2 – 20 | 1 day |
| 10 – 40 | 1 day |
| 20 – 400 | 1 month |
| > 400 | 1 year |

Besides being the primary standard, formazin has two other advantages. It is available from several chemical and scientific suppliers (www.vwrsp.com, www.ColePalmer.com, www.riccachemical.com, and www.labchem.net) and it is the least-expensive, commercially available standard. Formazin also has a couple of disadvantages: 1) it has a MSDS health-hazard rating of 2; 2) turbidity can vary by $\pm 2\%$ from the lot to lot; 3) the size, shape, and aggregation of formazin particles change with temperature, time, and concentration; 4) it settles in storage and must be mixed immediately prior to use; and 5) dilute formazin standards have a storage life as short as one hour.



We must emphasize that unlike SSC, which has physical units, turbidity values (NTUs, FTUs, etc.) do not. Therefore, if you measure water turbidity to be 100 NTU, you cannot directly infer any physical quantities from it. Turbidity values do not represent particular SSC values, indicate light levels at the bottom of a stream, or quantify biological process'. Moreover, it is often assumed that turbidity standards behave optically like sediment. This is possible when the size, NIR reflectivity, refractive index, and shape of the sediment and the turbidity standard are similar; this is an extremely rare occurrence. For example, even the median diameters of the two approved calibration standards differ by a factor of more than five and the shape of SDVB and formazin particles also differ; see NTU-SSC relationships.

Reference:

John Downing. 2005. *Turbidity Monitoring*. Chapter 24 in: *Environmental Instrumentation and Analysis Handbook*. John Wiley & Sons, Pages: 511-546. 2005.

Sadar, M. 1998. *Turbidity Standards*. Hach Company Technical Information Series – Booklet No. 12. 18 pages.

Papacosta, K. and Martin Katz. 1990. The *Rationale for the Establishment of a Certified Reference Standard for Nephelometric Instruments*. In: Proceedings, American Waterworks Assoc. Water Quality Technical Conference. Paper Number ST6-4, pp. 1299-1333.

Zaneveld, J.R.V., R.W. Spinrad, and R. Bartz. 1979. *Optical Properties of Turbidity Standards*. SPIE Volume 208 Ocean Optics VI. Bellingham, Washington. pp. 159-158.

Campbell Scientific Companies

Campbell Scientific, Inc. (CSI)

815 West 1800 North
Logan, Utah 84321
UNITED STATES

www.campbellsci.com • info@campbellsci.com

Campbell Scientific Africa Pty. Ltd. (CSAf)

PO Box 2450
Somerset West 7129
SOUTH AFRICA

www.csafrica.co.za • cleroux@csafrica.co.za

Campbell Scientific Australia Pty. Ltd. (CSA)

PO Box 8108
Garbutt Post Shop QLD 4814
AUSTRALIA

www.campbellsci.com.au • info@campbellsci.com.au

Campbell Scientific do Brasil Ltda. (CSB)

Rua Apinagés, n.br. 2018 — Perdizes
CEP: 01258-00 — São Paulo — SP
BRASIL

www.campbellsci.com.br • vendas@campbellsci.com.br

Campbell Scientific Canada Corp. (CSC)

11564 - 149th Street NW
Edmonton, Alberta T5M 1W7
CANADA

www.campbellsci.ca • dataloggers@campbellsci.ca

Campbell Scientific Centro Caribe S.A. (CSCC)

300 N Cementerio, Edificio Breller
Santo Domingo, Heredia 40305
COSTA RICA

www.campbellsci.cc • info@campbellsci.cc

Campbell Scientific Ltd. (CSL)

Campbell Park
80 Hathern Road
Shepshed, Loughborough LE12 9GX
UNITED KINGDOM

www.campbellsci.co.uk • sales@campbellsci.co.uk

Campbell Scientific Ltd. (CSL France)

3 Avenue de la Division Leclerc
92160 ANTONY
FRANCE

www.campbellsci.fr • info@campbellsci.fr

Campbell Scientific Ltd. (CSL Germany)

Fahrenheitstraße 13
28359 Bremen
GERMANY

www.campbellsci.de • info@campbellsci.de

Campbell Scientific Spain, S. L. (CSL Spain)

Avda. Pompeu Fabra 7-9, local 1
08024 Barcelona
SPAIN

www.campbellsci.es • info@campbellsci.es

Please visit www.campbellsci.com to obtain contact information for your local US or international representative.