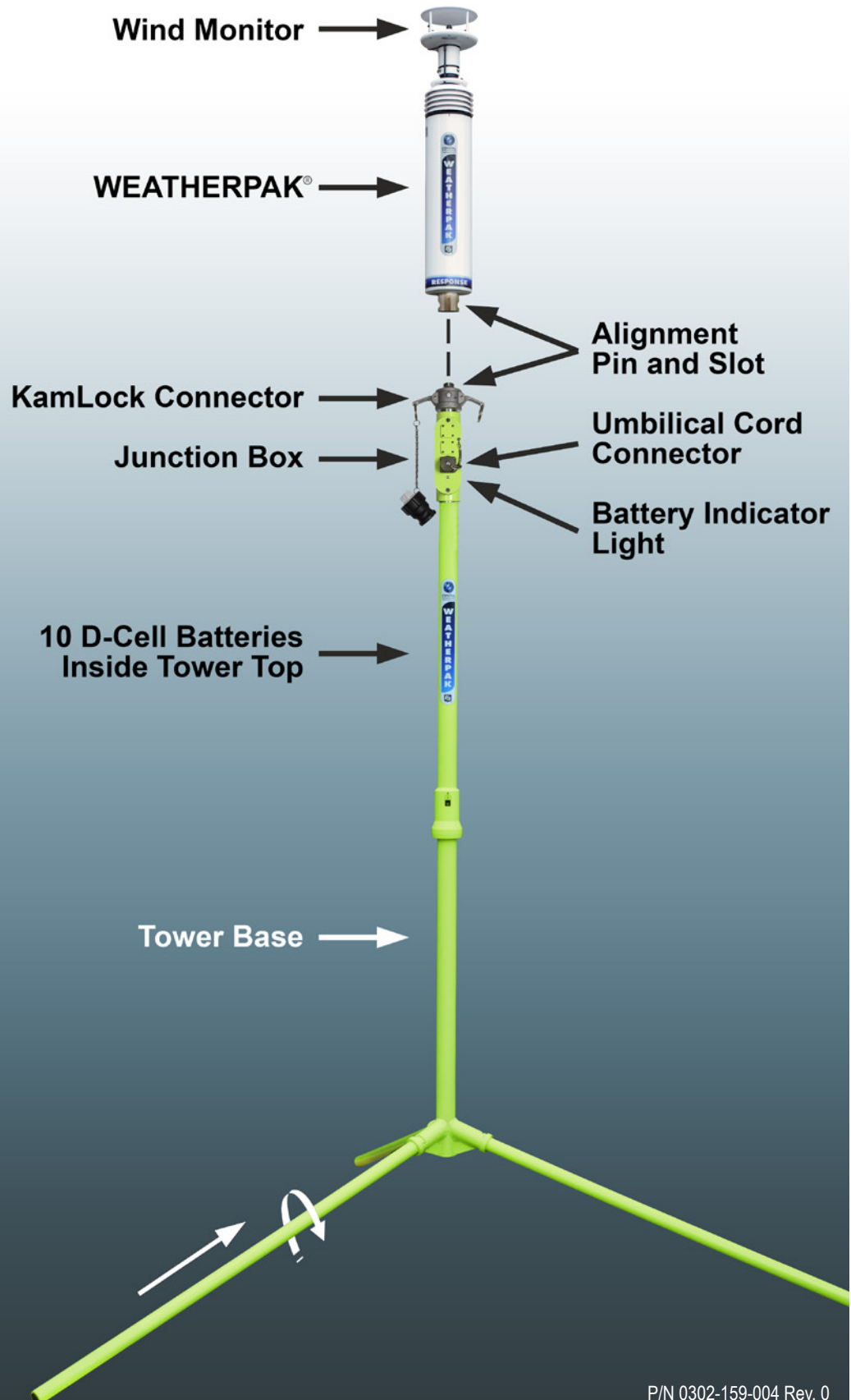




RESPONSE



P/N 0302-159-004 Rev. 0



Placement

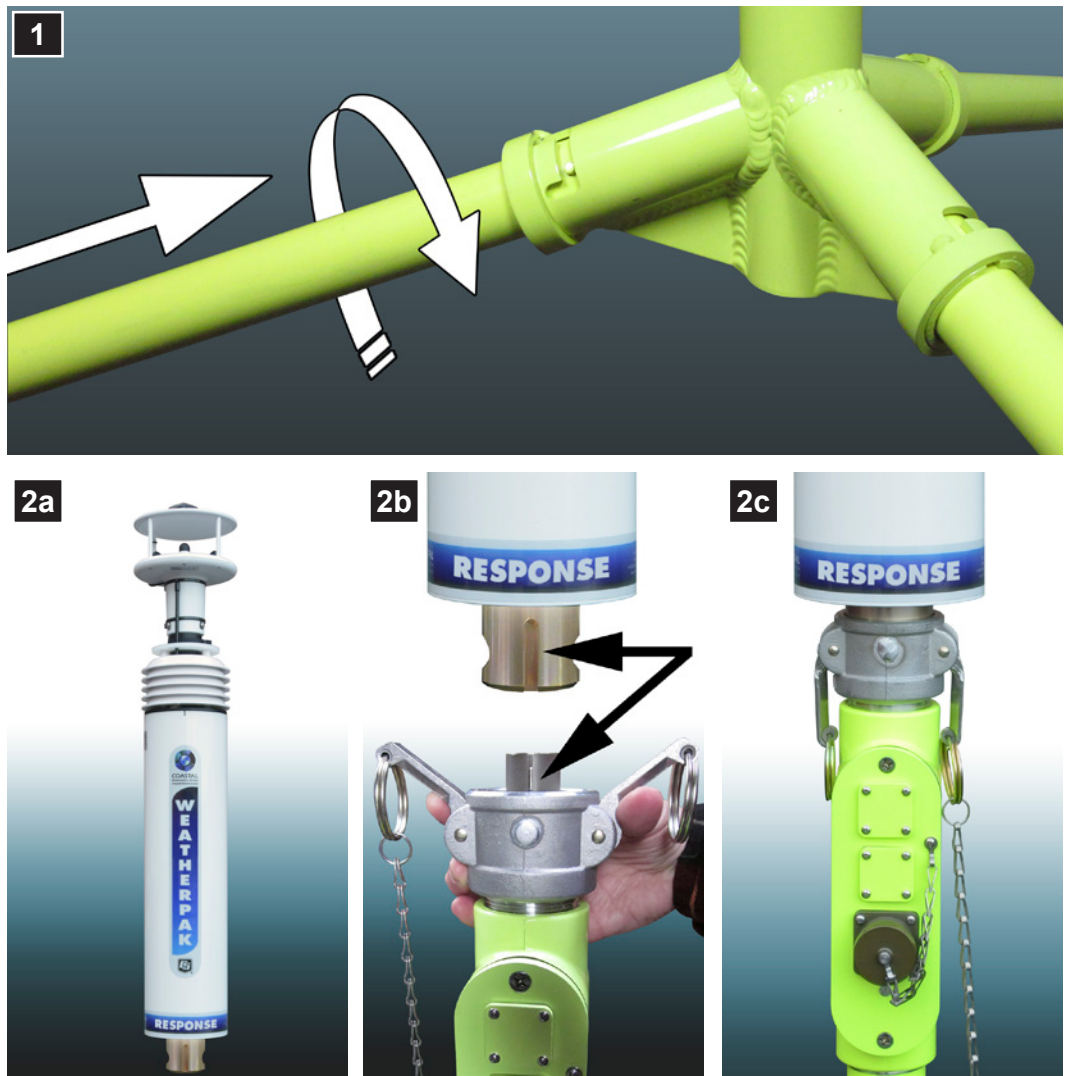
To avoid compass error, place the WEATHERPAK® at least 30 meters (99 feet), laterally, from any mass of steel (trucks, buildings, etc). For vehicle mount applications, 3 meters (9 feet) above the vehicle is acceptable.



Tower Set-Up

1. Assemble the lower tower section: Insert the three legs into the tower base and secure with a turn clockwise, forming a tripod. Place the tripod in the center of a level area 4-meters in diameter.
2. Carefully remove the WEATHERPAK® from the main case by lifting only from the base of the wind sensor. To secure the WEATHERPAK® to the tower top, first remove the protective cap from the top of the KamLock connector by lifting both arms of the connector and pulling the cap straight up. Line up the slot on the WEATHERPAK® bottom connector with the pin slot in the KamLock connector. Carefully, but firmly, seat the WEATHERPAK® into the KamLock (the fit is precision-machined and may require an extra push). Push the arms of the KamLock clamp down to assure proper installation.
3. Place the entire unit (upper tower section and WEATHERPAK®) onto the tripod and turn clockwise to secure.

The WEATHERPAK® is now operating and will transmit data every 30 seconds to the INTERCEPT® display. When removed from the KamLock, the WEATHERPAK® will stop sampling and turn itself off.



INTERCEPT® Display

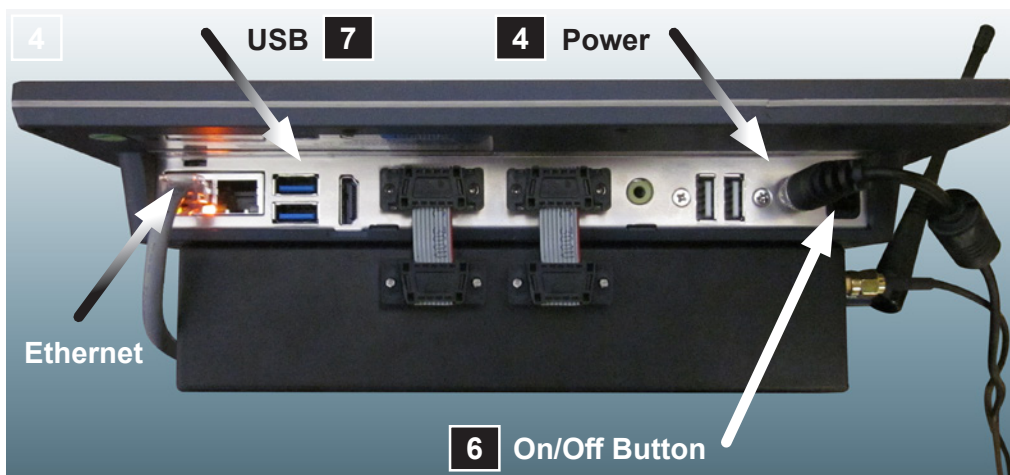


6 Power Indicator Light



INTERCEPT® Display Set-Up

4. Plug the INTERCEPT® Display power supply AC cord into a power source (110V, unless otherwise marked), then tighten the mini-plug end into the receptacle on the bottom of the display.
5. Connect the external GPS and radio antenna to the appropriate connectors on the side of the INTERCEPT® Display.
6. Press the power "On/Off" rocker switch on the bottom of the unit. The power indicator light on the front of the display will illuminate, the Coastal Environmental Systems splash screen will immediately appear, and the display will complete its boot-up within 20-30 seconds.
7. When outputting data to CAMEO®/ALOHA® plume modeling software, connect the USB data cable to the bottom of the INTERCEPT® Display. (The Ethernet connection will only be used in rare instances where the INTERCEPT® Display will be connected to a network.)



Battery Replacement

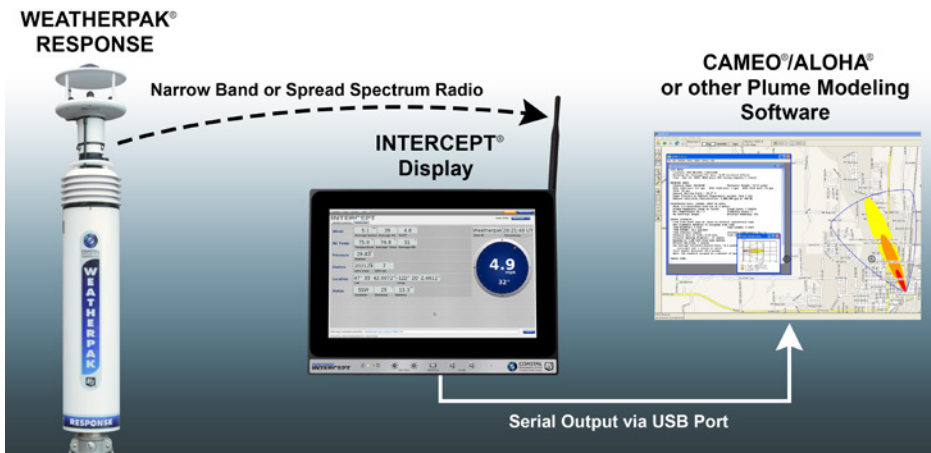


Decontamination

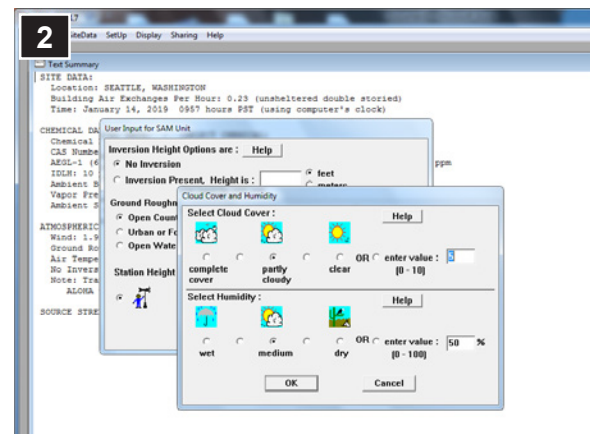
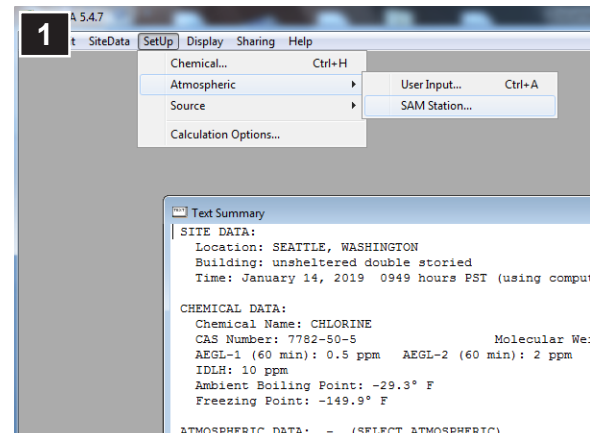
Decontaminate the WEATHERPAK® system while fully assembled on tripod tower.

Using the WEATHERPAK® RESPONSE with Aloha® (on a separate PC)

The purpose of this reference card is to present the basic operation of ALOHA® with the WEATHERPAK® RESPONSE. For complete instructions please consult the CAMEO® web site or a Certified CAMEO®/ALOHA® instructor.



1. After entering **SiteData** and **SetUp/Chemical** information choose the **[SetUp]** menu, select **[Atmospheric]**, then **[SAM Station]**. CAMEO® will then ask if the unit is properly connected, configured, etc. Select **[OK]**.

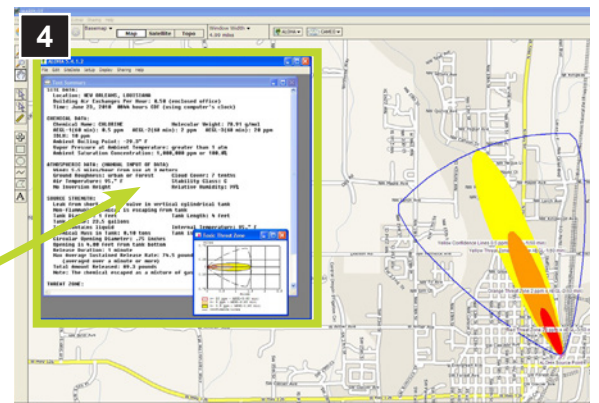
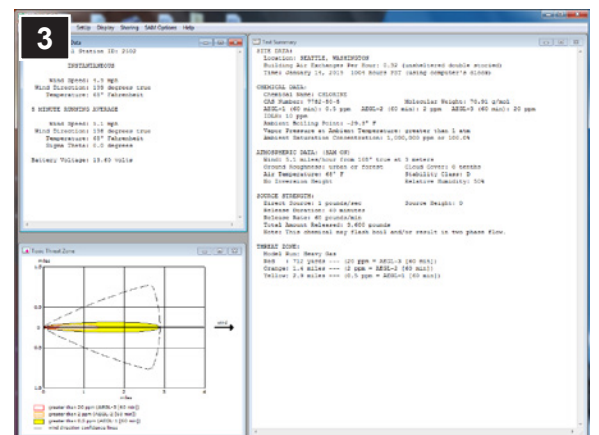


Note: An improperly configured Serial Port is the most common cause of data delivery problems with ALOHA®.

2. ALOHA® will now require several observational inputs regarding the presence of an inversion, terrain, and station height (WEATHERPAK® RESPONSE is 3 Meters). Following this is an input screen for manual entry of cloud cover and relative humidity. Your WEATHERPAK® has a humidity sensor... simply read the RH on the RESPONSE's flat panel PC and manually enter the data into ALOHA®.

Before initializing the source (i.e. Tank, Pipe, etc.), ALOHA® requires that one line of data be delivered by the WEATHERPAK®. You may also enter the **[SAM Options]** menu and select either **[Raw SAM Data]** or **[Processed SAM Data]**. When data appears, you may proceed to enter "Source Strength" information.

3. You are now ready to plot the plume. Choose the **[Display]** drop-down menu, select **[Threat Zone]**. The "Threat Zone" screen displaying the plume should appear immediately.
4. If you wish to display the plume overlaid on mapping software, (i.e. MARPLOT®, LandView®, ArcView®, etc.), open the mapping program at this point.



Important: When using the WEATHERPAK® with ALOHA® and MARPLOT®, the ALOHA® application window must be running in front of MARPLOT®. The plume on MARPLOT® will not update every 30 seconds unless the ALOHA® application window is on top.