

TRx Set-Up

- **Assemble the lower tower section:** Insert tripod legs into the tower base and secure with a turn.
- **Assemble the wind monitor:** Place the propeller on the shaft (*either way works*). Secure by screwing (*finger-tight*) the lock nut into place on the shaft. Do not over tighten.
- **Install the wind monitor:** Line up indicator mark on wind monitor with the slot on the connector located on the WEATHERPAK®. Be certain the wind monitor is seated all the way down.
- **Secure the WEATHERPAK® to tower:** Line up the slot on the WEATHERPAK® bottom connector with the pin in the KamLock connector. Carefully, but firmly, seat the WEATHERPAK® into the KamLock (the fit is precision-machined and may require an extra push). Push the arms of the KamLock clamp down to assure proper installation.
- **The WEATHERPAK® is now operating** and will transmit data every 30 seconds. When removed from the KamLock, the WEATHERPAK® will stop sampling and turn itself off.

Placement

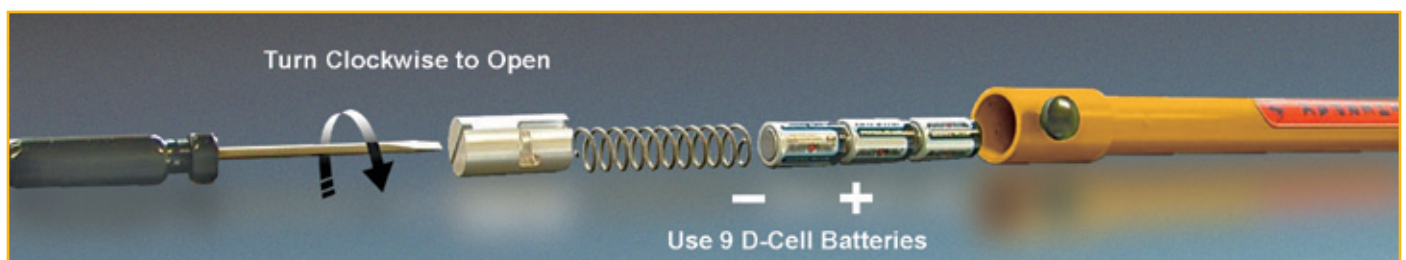
To avoid compass error, place the WEATHERPAK® at least 30 meters, laterally, from any mass of steel (trucks, buildings, etc). In other words, mounting on top of a van is OK, but right next to it is not an ideal location.



Decontamination

Decontaminate the WEATHERPAK® system while fully assembled on tripod tower.

Battery Replacement



Using the WEATHERPAK® TRx with Aloha®

The purpose of this reference card is to present the basic operation of ALOHA® with the WEATHERPAK® TRx. For complete instructions please consult the CAMEO® web site [<http://www.epa.gov/osweroe1/content/cameo/index.htm>] or a Certified CAMEO®/ALOHA® instructor.

After entering **SiteData** and **SetUp/Chemical** information choose the **[SetUp]** menu, select **[Atmospheric]**, then **[SAM Station]**. CAMEO® will then ask if the unit is properly connected, configured, etc. Select **[OK]**. (See Fig. 1)

Note: An improperly configured Serial Port is the most common cause of data delivery problems with ALOHA®.

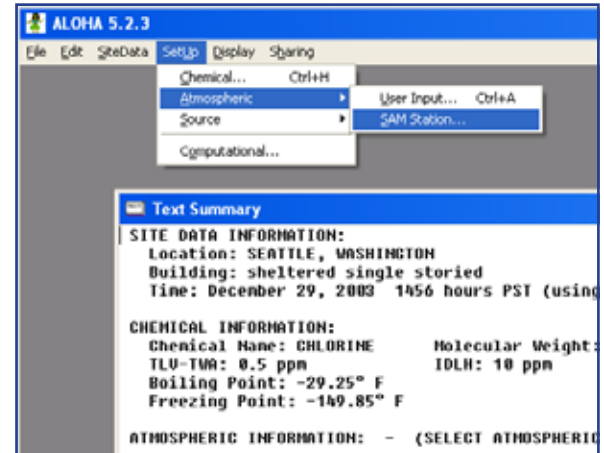


Figure 1

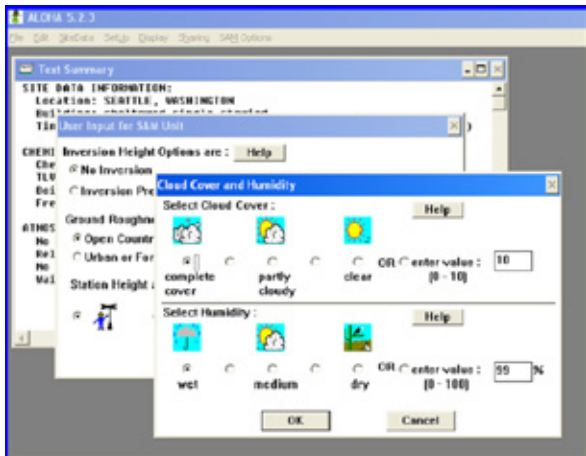


Figure 2

ALOHA® will now require several observational inputs regarding the presence of an inversion, terrain, and station height (WEATHERPAK® MTR is 3 Meters). Following this is an input screen for manual entry of cloud cover and relative humidity. Your WEATHERPAK® has a humidity sensor... simply read the RH on the display and manually enter the data. (See Fig. 2)

Before initializing the source (i.e. Tank, Pipe, etc.), ALOHA® requires that one line of data be delivered by the WEATHERPAK®. Watch the red "Data" light on the Receiver/Display, which will illuminate every 30 seconds, indicating a transmission has occurred. You may also enter the **[SAM Options]** menu and select either **[Raw SAM Data]** or **[Processed SAM Data]**. When data appears, you may proceed to enter "Source Strength" information.

You are now ready to plot the plume. Choose the **[Display]** drop-down menu, select **[Threat Zone]**. The "Threat Zone" screen displaying the plume should appear immediately. (See Fig. 3)

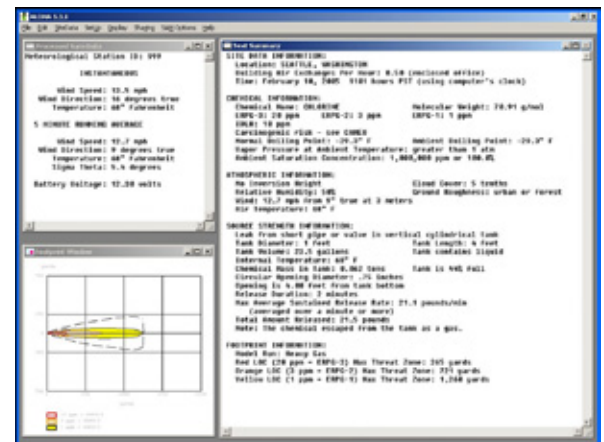


Figure 3

If you wish to display the plume overlaid on mapping software, (i.e. MARPLOT®, LandView®, ArcView®, etc.), open the mapping program at this point. (See Fig. 4)

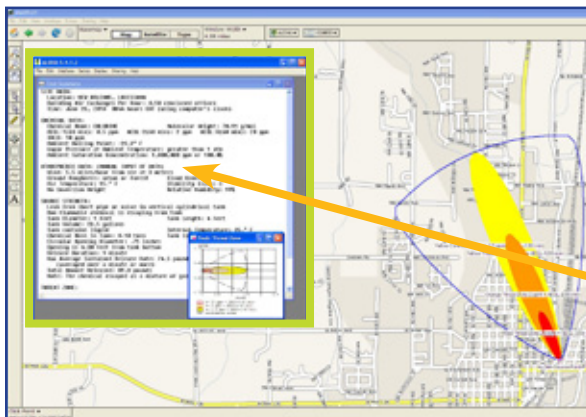


Figure 4

Important: When using the WEATHERPAK® with ALOHA® and MARPLOT®, the ALOHA® application window must be running in front of MARPLOT®. The plume on MARPLOT® will not update every 30 seconds unless the ALOHA® application window is on top.