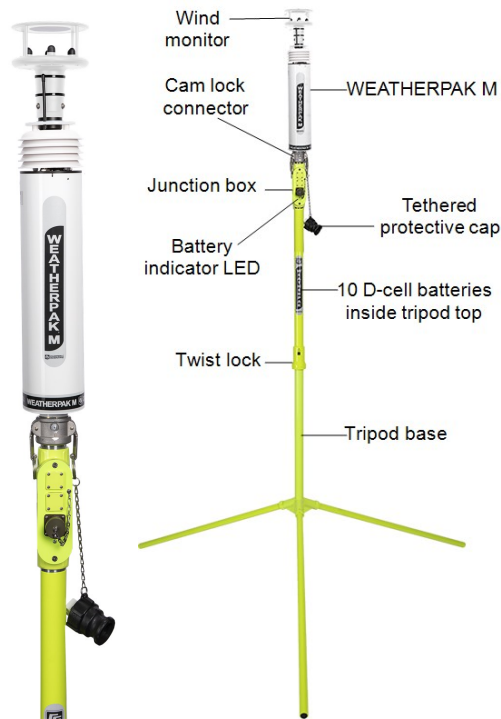


WEATHERPAK® M

Quick Deploy Guide



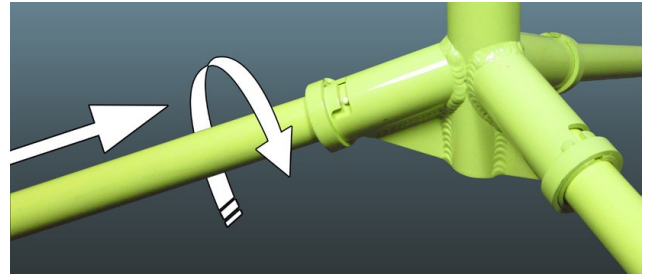
1. Placement

To avoid compass error, place the WEATHERPAK® M1 at least 30 meters (99 feet), laterally, from any mass of steel (trucks, buildings, etc). For vehicle mount applications, 3 meters (10 feet) above the vehicle is acceptable.



2. Tripod setup

1. Insert and lock the legs onto the tripod base.



2. Align the slot on the WEATHERPAK M with the guide pin on the quick release and push straight in. The cam lock connector provides a precision sealed fit and may require an extra push to seat the WEATHERPAK M properly.



CAUTION:

DO NOT screw the WEATHERPAK M onto the cam lock connector; push straight in.

- Once the weather station is properly seated, press the arms of the cam lock down to assure a tight fit. The battery indicator LED (on the tripod junction box) should illuminate when the WEATHERPAK M is properly seated into the cam lock connector.



- Place the entire unit (tripod top and WEATHERPAK M) onto the tripod base, engage the twist-lock and turn clockwise a quarter turn.
- The WEATHERPAK M is now running and sampling data. When the WEATHERPAK M is removed from the cam lock connector, it will stop sampling and shut itself off.

3. WEATHERPAK M display setup

- Connect the external GPS and radio antennas to the appropriate connectors on the side of the WEATHERPAK M display.



FIGURE 3-1. Side of WEATHERPAK M display

- When outputting data to the CAMEO®/ALOHA® 2 plume modeling software, connect the USB to serial data cable. (The Ethernet connection will only be used in rare instances where the WEATHERPAK M display will be connected to a network).
- Plug the WEATHERPAK M display power supply into an AC power source then insert the power supply barrel connector into the power jack on the bottom of the display and tighten.

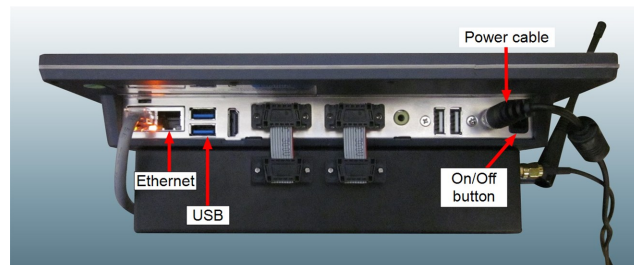


FIGURE 3-2. Bottom of WEATHERPAK M display


- The power-indicator light on the bezel illuminates as the display starts up. The WEATHERPAK M application will automatically launch and begin receiving data from any WEATHERPAK M units available.

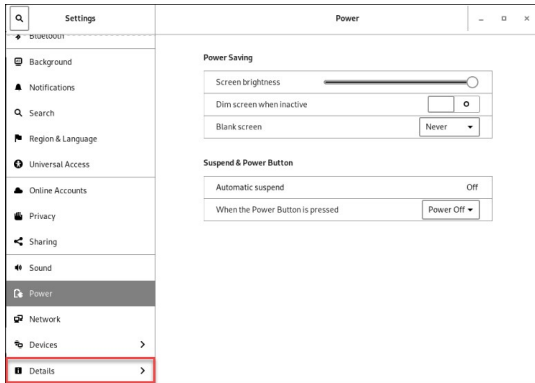


FIGURE 3-3. Front of WEATHERPAK M display

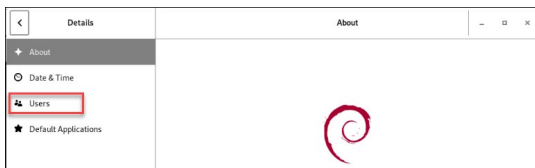
3. User password

Campbell Scientific recommends that you change the default user password. To change the password:

1. On the display, click the down arrow in the upper black bar and then click  to open the **Settings**.
2. Click **Details**.



3. Click **Users**.



4. Click in the **Password** field.



5. Enter the current password, **campbell21X**. Enter and confirm the new password.

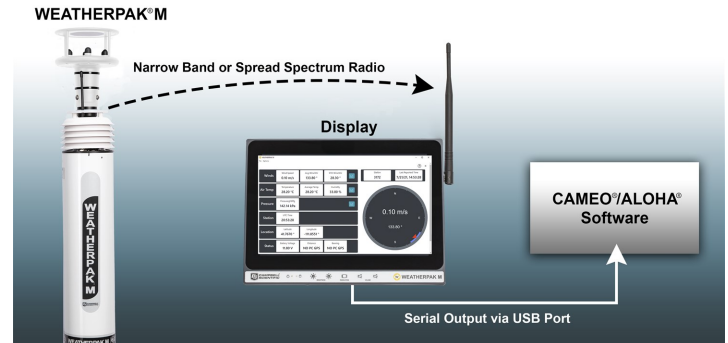


CAUTION:

Do not forget your password. A forgotten password can only be reset at the factory.

4. WEATHERPAK M and **ALOHA** software

The following presents the basic operation of **ALOHA** with the WEATHERPAK M. Campbell Scientific recommends consulting the **ALOHA** website and/or a certified **CAMEO/ALOHA** instructor for training, program details, and limitations.



1. Click the **ALOHA** desktop icon or select **ALOHA** from the Windows® **Programs** menu. An **Air Model Limitations** dialog box will appear with important notes on program limitations. Read and click **OK**.
2. Confirm that **Site Data** information provided in the **Text Summary** window is correct. If required, use the **Site Data** drop-down menu to change data.
3. Go to **SetUp > Chemical** and select the appropriate chemical.
4. Select **SetUp > Atmospheric > SAM Station** to display a series of dialog boxes that require user observations or assumptions.

NOTE:

Relative humidity is not captured automatically by the **ALOHA** model but may be entered manually using data from the WEATHERPAK M display.

5. (Optional) To confirm that WEATHERPAK M data is being delivered to **ALOHA**, go to **SAM Options > Processed Data** and the **Processed SAM Data** window will display the data delivered to **ALOHA**.

NOTE:

The user gets a warning message in both the **Text Summary** and **Processed SAM Data** windows if the WEATHERPAK M has been collecting data for less than five minutes.

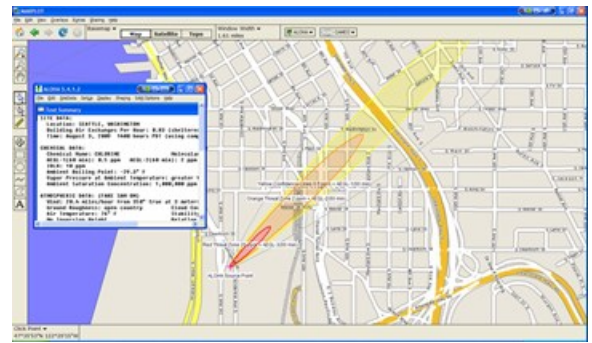
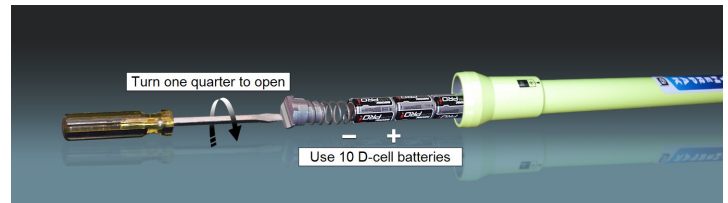


FIGURE 4-2. ALOHA with MARPLOT map

5. Battery replacement



6. Decontamination

Decontaminate the WEATHERPAK M system while fully assembled on tripod tripod.

7. Reference

1WEATHERPAK is a registered trademark of Campbell Scientific.
2Both ALOHA and CAMEO are registered by National Oceanic and Atmospheric Administration (NOAA) U.S. Department of Commerce FEDERAL AGENCY UNITED STATES.

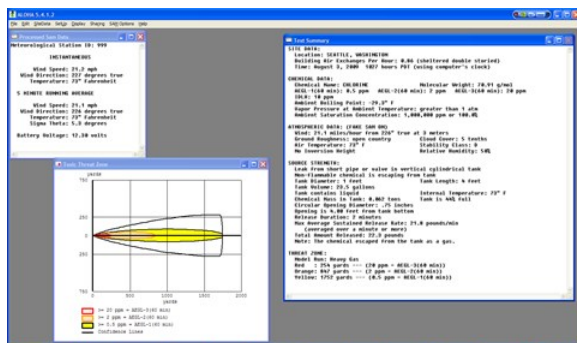


FIGURE 4-1. ALOHA window

9. Select the **Sharing** menu to plot the plume onto a **MARPLOT** (or other) map. As weather conditions change, the plume size and position will change on the map, shortly after the WEATHERPAK M provides updated data.

NOTE:

MARPLOT software requires that the **ALOHA** window overlay the map window for the map-plume to update automatically.



Global Sales & Support Network

A worldwide network to help meet your needs



Campbell Scientific Regional Offices

Australia

Location: Garbutt, QLD Australia
Phone: 61.7.4401.7700
Email: info@campbellsci.com.au
Website: www.campbellsci.com.au

Brazil

Location: São Paulo, SP Brazil
Phone: 11.3732.3399
Email: vendas@campbellsci.com.br
Website: www.campbellsci.com.br

Canada

Location: Edmonton, AB Canada
Phone: 780.454.2505
Email: dataloggers@campbellsci.ca
Website: www.campbellsci.ca

China

Location: Beijing, P. R. China
Phone: 86.10.6561.0080
Email: info@campbellsci.com.cn
Website: www.campbellsci.com.cn

Costa Rica

Location: San Pedro, Costa Rica
Phone: 506.2280.1564
Email: info@campbellsci.cc
Website: www.campbellsci.cc

France

Location: Vincennes, France
Phone: 0033.0.1.56.45.15.20
Email: info@campbellsci.fr
Website: www.campbellsci.fr

Germany

Location: Bremen, Germany
Phone: 49.0.421.460974.0
Email: info@campbellsci.de
Website: www.campbellsci.de

India

Location: New Delhi, DL India
Phone: 91.11.46500481.482
Email: info@campbellsci.in
Website: www.campbellsci.in

South Africa

Location: Stellenbosch, South Africa
Phone: 27.21.8809960
Email: sales@campbellsci.co.za
Website: www.campbellsci.co.za

Spain

Location: Barcelona, Spain
Phone: 34.93.2323938
Email: info@campbellsci.es
Website: www.campbellsci.es

Thailand

Location: Bangkok, Thailand
Phone: 66.2.719.3399
Email: info@campbellsci.asia
Website: www.campbellsci.asia

UK

Location: Shepshed, Loughborough, UK
Phone: 44.0.1509.601141
Email: sales@campbellsci.co.uk
Website: www.campbellsci.co.uk

USA

Location: Logan, UT USA
Phone: 435.227.9120
Email: info@campbellsci.com
Website: www.campbellsci.com