



**Campbell**  
S C I E N T I F I C

# MESSIR-COMM

## Message Switching System

Ensuring the reliable, secure, and timely exchange of critical meteorological and aeronautical information, enabling safe and efficient air navigation worldwide.

- For Meteorological Centers, fulfilling its operational and strategic objectives:
  - Collect observational data from across the country in real time.
  - Ingest and integrate information from multiple sources, including remote sensing systems and legacy infrastructures.
  - Retrieve relevant data from web-based and external repositories.
  - Distribute meteorological data and products efficiently to both internal and external stakeholders — including aviation, defense, regional centers, and professional users.
  - Ensure reliable GTS message switching and coordination with international meteorological networks.
  - Transition seamlessly to the WMO Information System (WIS) environment in compliance with the latest standards.
  - Support ICAO SWIM services through standardized data publishing and subscription mechanisms, ensuring interoperability within the global aviation information framework.

# MESSIR-COMM Solution

Delivers secure, fast, and interoperable data exchange — ensuring reliable communication between meteorological, aviation, and international networks.



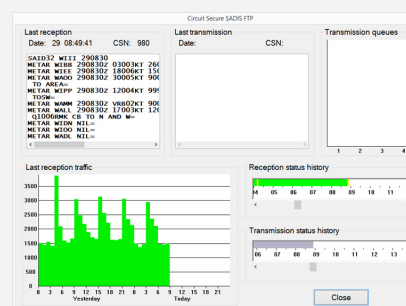
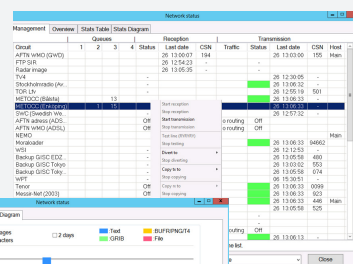
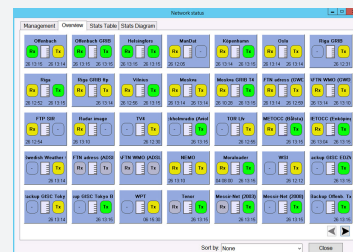
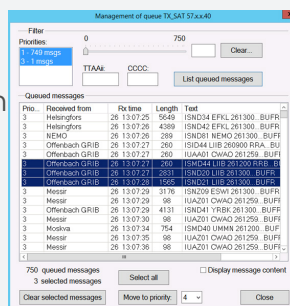
## Key Capabilities

- Unified data handling — collects, processes, and distributes meteorological data from national and international sources
- Wide connectivity — supports WIS, TCP/IP, FTP/SFTP, AFTN, /AMHS, WAFC API's, AMQP and legacy circuits (fax)
- Data integration — compatible with global feeds such as SADIS, WIFS, EUMETCast, GEONETCast, and observation systems (AWS, radar, satellite)
- User-friendly interface — intuitive displays, circuit supervision, and real-time statistics



## Performance and Reliability

- Proven throughput of 500+ messages per second
- Supports over 2,000 simultaneous circuits
- Hot stand-by architecture with automatic failover for 24/7 availability
- Fast setup and easy administration with menu-driven configuration

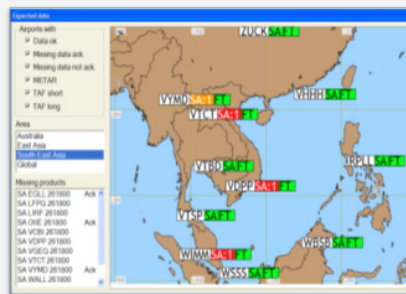


## Compliance and Modern Standards

- Aligned with WMO and ICAO Annex 3
- Supports both TAC, TDCF (BUFR, GRIB) formats
- Handles IWXXM OPMET data for modern aviation systems
- WIS-ready (GISC, DCPC, NC)
- Supports WAFC API's and SWIM data subscription

Work in progress:

- SWIM publishing, scheduled for January 2026.
- WIS2 compliance, scheduled for July 2026.



**Campbell Scientific France**  
41 rue Périer, 92120 Montrouge, France

+33 1 45 73 60 60

neo@campbellsci.com