

# INSTRUCTION MANUAL



## **CS106 Barometric Pressure Sensor**

Revision: 9/14



Copyright © 1995 - 2014  
Campbell Scientific, Inc.



# ***Limited Warranty***

---

“Products manufactured by CSI are warranted by CSI to be free from defects in materials and workmanship under normal use and service for twelve months from the date of shipment unless otherwise specified in the corresponding product manual. (Product manuals are available for review online at [www.campbellsci.com](http://www.campbellsci.com).) Products not manufactured by CSI, but that are resold by CSI, are warranted only to the limits extended by the original manufacturer. Batteries, fine-wire thermocouples, desiccant, and other consumables have no warranty. CSI’s obligation under this warranty is limited to repairing or replacing (at CSI’s option) defective Products, which shall be the sole and exclusive remedy under this warranty. The Customer assumes all costs of removing, reinstalling, and shipping defective Products to CSI. CSI will return such Products by surface carrier prepaid within the continental United States of America. To all other locations, CSI will return such Products best way CIP (port of entry) per Incoterms ® 2010. This warranty shall not apply to any Products which have been subjected to modification, misuse, neglect, improper service, accidents of nature, or shipping damage. This warranty is in lieu of all other warranties, expressed or implied. The warranty for installation services performed by CSI such as programming to customer specifications, electrical connections to Products manufactured by CSI, and Product specific training, is part of CSI’s product warranty. **CSI EXPRESSLY DISCLAIMS AND EXCLUDES ANY IMPLIED WARRANTIES OF MERCHANTABILITY OR FITNESS FOR A PARTICULAR PURPOSE.** CSI hereby disclaims, to the fullest extent allowed by applicable law, any and all warranties and conditions with respect to the Products, whether express, implied or statutory, other than those expressly provided herein.”

# Assistance

---

Products may not be returned without prior authorization. The following contact information is for US and international customers residing in countries served by Campbell Scientific, Inc. directly. Affiliate companies handle repairs for customers within their territories. Please visit [www.campbellsci.com](http://www.campbellsci.com) to determine which Campbell Scientific company serves your country.

To obtain a Returned Materials Authorization (RMA), contact CAMPBELL SCIENTIFIC, INC., phone (435) 227-9000. After an application engineer determines the nature of the problem, an RMA number will be issued. Please write this number clearly on the outside of the shipping container. Campbell Scientific's shipping address is:

**CAMPBELL SCIENTIFIC, INC.**

RMA# \_\_\_\_\_  
815 West 1800 North  
Logan, Utah 84321-1784

For all returns, the customer must fill out a "Statement of Product Cleanliness and Decontamination" form and comply with the requirements specified in it. The form is available from our web site at [www.campbellsci.com/repair](http://www.campbellsci.com/repair). A completed form must be either emailed to [repair@campbellsci.com](mailto:repair@campbellsci.com) or faxed to (435) 227-9106. Campbell Scientific is unable to process any returns until we receive this form. If the form is not received within three days of product receipt or is incomplete, the product will be returned to the customer at the customer's expense. Campbell Scientific reserves the right to refuse service on products that were exposed to contaminants that may cause health or safety concerns for our employees.

# Precautions

---

**DANGER — MANY HAZARDS ARE ASSOCIATED WITH INSTALLING, USING, MAINTAINING, AND WORKING ON OR AROUND TRIPODS, TOWERS, AND ANY ATTACHMENTS TO TRIPODS AND TOWERS SUCH AS SENSORS, CROSSARMS, ENCLOSURES, ANTENNAS, ETC.** FAILURE TO PROPERLY AND COMPLETELY ASSEMBLE, INSTALL, OPERATE, USE, AND MAINTAIN TRIPODS, TOWERS, AND ATTACHMENTS, AND FAILURE TO HEED WARNINGS, INCREASES THE RISK OF DEATH, ACCIDENT, SERIOUS INJURY, PROPERTY DAMAGE, AND PRODUCT FAILURE. TAKE ALL REASONABLE PRECAUTIONS TO AVOID THESE HAZARDS. CHECK WITH YOUR ORGANIZATION'S SAFETY COORDINATOR (OR POLICY) FOR PROCEDURES AND REQUIRED PROTECTIVE EQUIPMENT PRIOR TO PERFORMING ANY WORK.

Use tripods, towers, and attachments to tripods and towers only for purposes for which they are designed. Do not exceed design limits. Be familiar and comply with all instructions provided in product manuals. Manuals are available at [www.campbellsci.com](http://www.campbellsci.com) or by telephoning (435) 227-9000 (USA). You are responsible for conformance with governing codes and regulations, including safety regulations, and the integrity and location of structures or land to which towers, tripods, and any attachments are attached. Installation sites should be evaluated and approved by a qualified engineer. If questions or concerns arise regarding installation, use, or maintenance of tripods, towers, attachments, or electrical connections, consult with a licensed and qualified engineer or electrician.

## General

- Prior to performing site or installation work, obtain required approvals and permits. Comply with all governing structure-height regulations, such as those of the FAA in the USA.
- Use only qualified personnel for installation, use, and maintenance of tripods and towers, and any attachments to tripods and towers. The use of licensed and qualified contractors is highly recommended.
- Read all applicable instructions carefully and understand procedures thoroughly before beginning work.
- Wear a **hardhat** and **eye protection**, and take **other appropriate safety precautions** while working on or around tripods and towers.
- **Do not climb** tripods or towers at any time, and prohibit climbing by other persons. Take reasonable precautions to secure tripod and tower sites from trespassers.
- Use only manufacturer recommended parts, materials, and tools.

## Utility and Electrical

- **You can be killed** or sustain serious bodily injury if the tripod, tower, or attachments you are installing, constructing, using, or maintaining, or a tool, stake, or anchor, come in **contact with overhead or underground utility lines**.
- Maintain a distance of at least one-and-one-half times structure height, 20 feet, or the distance required by applicable law, **whichever is greater**, between overhead utility lines and the structure (tripod, tower, attachments, or tools).
- Prior to performing site or installation work, inform all utility companies and have all underground utilities marked.
- Comply with all electrical codes. Electrical equipment and related grounding devices should be installed by a licensed and qualified electrician.

## Elevated Work and Weather

- Exercise extreme caution when performing elevated work.
- Use appropriate equipment and safety practices.
- During installation and maintenance, keep tower and tripod sites clear of un-trained or non-essential personnel. Take precautions to prevent elevated tools and objects from dropping.
- Do not perform any work in inclement weather, including wind, rain, snow, lightning, etc.

## Maintenance

- Periodically (at least yearly) check for wear and damage, including corrosion, stress cracks, frayed cables, loose cable clamps, cable tightness, etc. and take necessary corrective actions.
- Periodically (at least yearly) check electrical ground connections.

WHILE EVERY ATTEMPT IS MADE TO EMBODY THE HIGHEST DEGREE OF SAFETY IN ALL CAMPBELL SCIENTIFIC PRODUCTS, THE CUSTOMER ASSUMES ALL RISK FROM ANY INJURY RESULTING FROM IMPROPER INSTALLATION, USE, OR MAINTENANCE OF TRIPODS, TOWERS, OR ATTACHMENTS TO TRIPODS AND TOWERS SUCH AS SENSORS, CROSSARMS, ENCLOSURES, ANTENNAS, ETC.



# Table of Contents

---

*PDF viewers: These page numbers refer to the printed version of this document. Use the PDF reader bookmarks tab for links to specific sections.*

<b>1. Introduction .....</b>	<b>1</b>
<b>2. Cautionary Statements.....</b>	<b>1</b>
<b>3. Initial Inspection .....</b>	<b>1</b>
<b>4. Quickstart .....</b>	<b>1</b>
<b>5. Overview.....</b>	<b>4</b>
<b>6. Specifications .....</b>	<b>4</b>
6.1 Operating Range .....	4
6.2 Accuracy .....	5
6.3 General.....	5
<b>7. Installation.....</b>	<b>6</b>
7.1 Jumper Settings .....	6
7.2 Mounting in the Enclosure .....	6
7.3 Wiring .....	8
7.3.1 Datalogger Connection .....	8
7.3.2 5-pin Screw Terminal Plug Connector.....	9
7.4 Programming.....	10
7.4.1 CRBasic Instructions .....	10
7.4.2 Edlog Instructions .....	10
<b>8. Operation.....</b>	<b>11</b>
8.1 Multiplier and Offset Calculation .....	11
8.2 Conversion Factors .....	12
8.3 Long Lead Lengths .....	12
8.4 Output Resolution .....	12
8.5 Correcting Pressure to Sea Level .....	13
<b>9. Maintenance and Calibration .....</b>	<b>13</b>

## **Appendices**

<b>A. Importing Short Cut Code Into CRBasic Editor ...</b>	<b>A-1</b>
A.1 Importing Short Cut Code into a Program Editor .....	A-1
A.1.1 CRBasic Datalogger.....	A-1
A.1.2 Edlog.....	A-2

**B. Example Programs.....B-1**

    B.1 CRBasic Programs ..... B-1

        B.1.1 Example CR1000 Program Using Sequential Mode ..... B-1

        B.1.2 Example CR1000 Program Using Pipeline Mode..... B-2

    B.2 Edlog Program..... B-3

**Figures**

7-1. CS106 jumper set to shutdown mode ..... 6

7-2. ENC100 is a very small enclosure that can house one CS106 ..... 7

7-3. CS106 wiring diagram..... 8

7-4. Connector key attached to 5-pin screw terminal plug connector..... 9

8-1. Point slope graph ..... 11

**Tables**

7-1. Signal and Ground Connectors for CS106 ..... 9

8-1. Conversion Factors for Alternative Pressure Units ..... 12



# CS106 Barometric Pressure Sensor

---

## 1. Introduction

The CS106 measures barometric pressure for the range of 500 to 1100 mb. This range equates to from below sea level (as in a mine) to over 15,000 feet above sea level. Designed for use in environmental applications, the CS106 is compatible with all Campbell Scientific dataloggers.

## 2. Cautionary Statements

- READ AND UNDERSTAND the *Precautions* section at the front of this manual.
- Warning: Failure to protect the sensor from condensation may result in permanent damage.
- Warning: Improper wiring may damage the CS106 beyond repair.
- Care should be taken when opening the shipping package to not damage or cut the cable jacket. If damage to the cable is suspected, consult with a Campbell Scientific application engineer.
- Although the CS106 is rugged, it should be handled as a precision scientific instrument.

## 3. Initial Inspection

- Upon receipt of the CS106, inspect the packaging and contents for damage. File damage claims with the shipping company.

## 4. Quickstart

*Short Cut* is an easy way to program your datalogger to measure the CS106 and assign datalogger wiring terminals. Use the following procedure to get started.

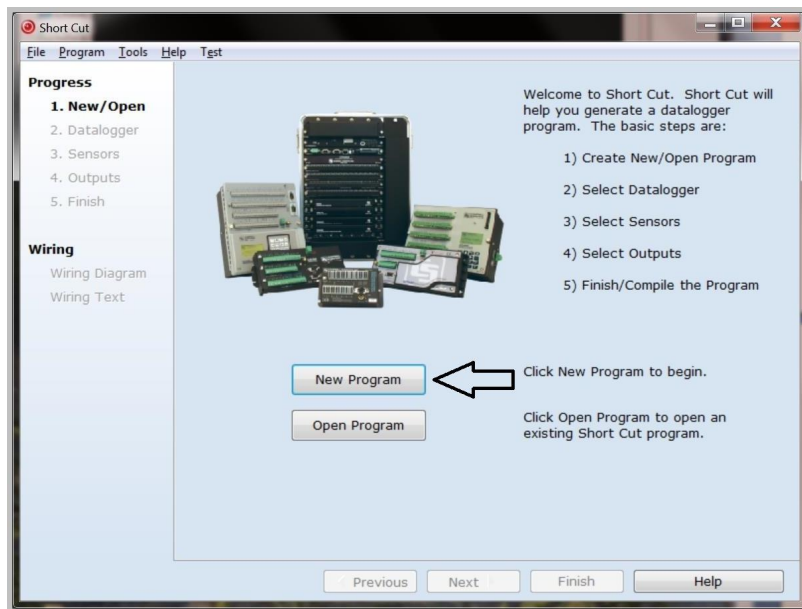
1. Install *Short Cut* by clicking on the install file icon. Get the install file from either [www.campbellsci.com](http://www.campbellsci.com), the ResourceDVD, or find it in installations of *LoggerNet*, *PC200W*, *PC400*, or *RTDAQ* software.



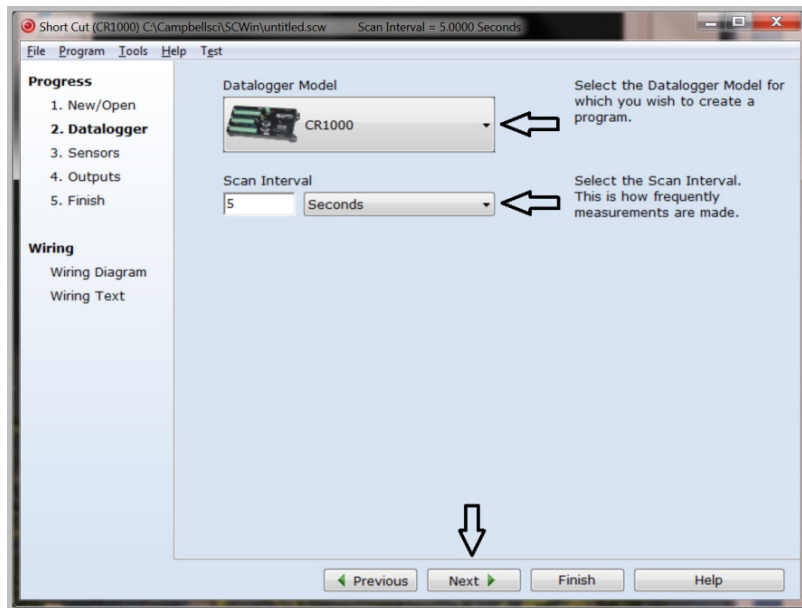
2. The *Short Cut* installation should place a *Short Cut* icon on the desktop of your computer. To open *Short Cut*, click on this icon.




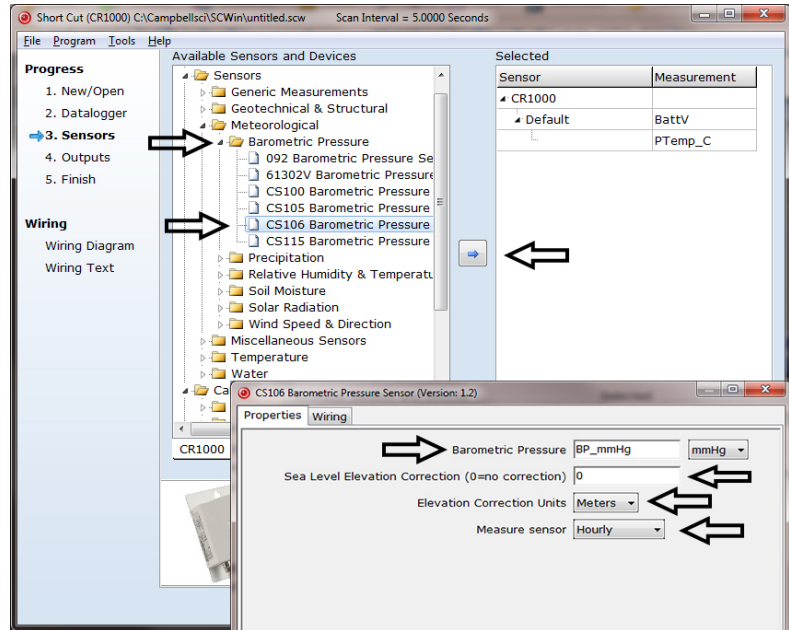
3. When *Short Cut* opens, select **New Program**.



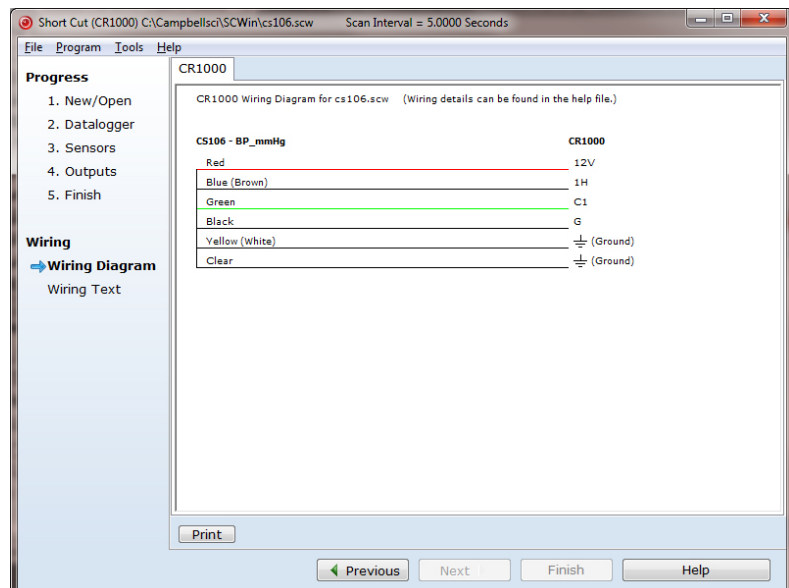
4. Select **Datalogger Model** and **Scan Interval** (default of 5 seconds is OK for most applications). Click **Next**.



- Under the **Available Sensors and Devices** list, select **Sensors | Meteorological | Barometric Pressure** folder. Select **CS106 Barometric Pressure Sensor**. Click  to move the selection to the **Selected** device window. Enter the **Sea Level Elevation Correction**. The default units for the sea level elevation correction is meters; this can be changed by clicking on the **Elevation Correction Units** box and selecting **Feet**. Defaults for the barometric pressure measurement and frequency of the measurement are **mmHg** and **Hourly**, consecutively. These can be changed by clicking the **Barometric Pressure** and **Measure sensor** boxes and selecting different values.



- After selecting the sensor, click at the left of the screen on **Wiring Diagram** to see how the sensor is to be wired to the datalogger. The wiring diagram can be printed out now or after more sensors are added.



7. Select any other sensors you have, then finish the remaining *Short Cut* steps to complete the program. The remaining steps are outlined in *Short Cut Help*, which is accessed by clicking on **Help | Contents | Programming Steps**.
8. If *LoggerNet*, *PC400*, *RTDAQ*, or *PC200W* is running on your PC, and the PC to datalogger connection is active, you can click **Finish** in *Short Cut* and you will be prompted to send the program just created to the datalogger.
9. If the sensor is connected to the datalogger, as shown in the wiring diagram in step 6, check the output of the sensor in the datalogger support software data display to make sure it is making reasonable measurements.

**WARNING**


---

**Improper wiring may damage the CS106 beyond repair.**

---

## 5. Overview

The CS106 uses Vaisala's Barocap® silicon capacitive pressure sensor, which has been designed for accurate and stable measurement of barometric pressure. This barometer is encased in a plastic shell (ABS/PC blend) fitted with an intake valve for pressure equalization.

The CS106 outputs a linear 0 to 2.5 Vdc signal that corresponds to 500 to 1100 mb. It can be operated in a shutdown or normal mode (see Section 7.1, *Jumper Settings*). In the shutdown mode, the datalogger switches 12 Vdc power to the barometer during the measurement. The datalogger then powers down the barometer between measurements to conserve power.

If the CS106 and datalogger will be housed in different enclosures, the CABLE5CBL-L should be used instead of the cable that is shipped with the CS106. The CABLE5CBL-L can terminate in:

- Pigtails that connect directly to a Campbell Scientific datalogger (option –PT)
- Connector that attaches to a prewired enclosure (option –PW). Refer to [www.campbellsci.com/prewired-enclosures](http://www.campbellsci.com/prewired-enclosures) for more information.

## 6. Specifications

**Features:**

- Integral switching circuit limits power consumption to measurement cycle
- Compatible with Campbell Scientific CRBasic dataloggers: CR200(X) series, CR800 series, CR1000, CR3000, CR5000, and CR9000(X). Also compatible with Edlog dataloggers: CR500, CR510, CR10(X), CR23X, CR7, and 21X

### 6.1 Operating Range

<b>Pressure:</b>	500 mb to 1100 mb
<b>Temperature:</b>	–40 to +60 °C
<b>Humidity:</b>	non-condensing

## 6.2 Accuracy

<b>Total Accuracy***:</b>	$\pm 0.3$ mb @ +20 °C $\pm 0.6$ mb @ 0 to +40 °C $\pm 1$ mb @ -20 to +45 °C $\pm 1.5$ mb @ -40 to +60 °C
<b>Linearity*:</b>	$\pm 0.25$ mb @ 20 °C
<b>Hysteresis*:</b>	$\pm 0.03$ mb @ 20 °C
<b>Repeatability*:</b>	$\pm 0.03$ mb @ 20 °C
<b>Calibration Uncertainty**:</b>	$\pm 0.15$ mb @ 20 °C
<b>Long-Term Stability:</b>	$\pm 0.1$ mb per year

\* Defined as  $\pm 2$  standard deviation limits of end-point non-linearity, hysteresis error, or repeatability error

\*\* Defined as  $\pm 2$  standard deviation limits of inaccuracy of the working standard at 1000 mb in comparison to international standards (NIST)

\*\*\* Defined as the root sum of the squares (RSS) of end-point non-linearity, hysteresis error, repeatability error and calibration uncertainty at room temperature

## 6.3 General

<b>Dimensions:</b>	9.7 x 6.8 x 2.8 cm (3.8 x 2.7 x 1.1 in)
<b>Weight:</b>	90 g (3.2 oz)
<b>Housing Material:</b>	ABS/PC blend
<b>Supply Voltage:</b>	10 to 30 Vdc
<b>Supply Voltage Control:</b>	When the internal jumper is closed, the CS106 is on continually. When the jumper is open, the CS106 can be turned on/off with 5 Vdc/0 Vdc.
<b>Supply Voltage Sensitivity:</b>	negligible
<b>Current Consumption:</b>	<4 mA (active); <1 $\mu$ A (quiescent)
<b>Output Voltage:</b>	0 to 2.5 Vdc
<b>Warm Up Time:</b>	1 s
<b>Pressure Fitting:</b>	barbed fitting for 1/8 in I.D. tubing
<b>Overpressure Limit:</b>	2000 mb

## 7. Installation

### 7.1 Jumper Settings

The CS106 can be operated in one of two modes: shutdown and normal. The mode is selected by a jumper located underneath the plastic cover of the barometer. When the jumper is not installed, the CS106 is in shutdown mode and the datalogger turns the CS106 on and off with a control port or excitation channel; to use the excitation channel, the datalogger must be able to provide an excitation voltage of 5 Vdc. When the jumper is installed, the CS106 is in normal mode and powered continuously.

---

**NOTE**

CS106s shipped from Campbell Scientific are configured for shutdown mode (jumper open).

---

The location of the jumper is shown in FIGURE 7-1.

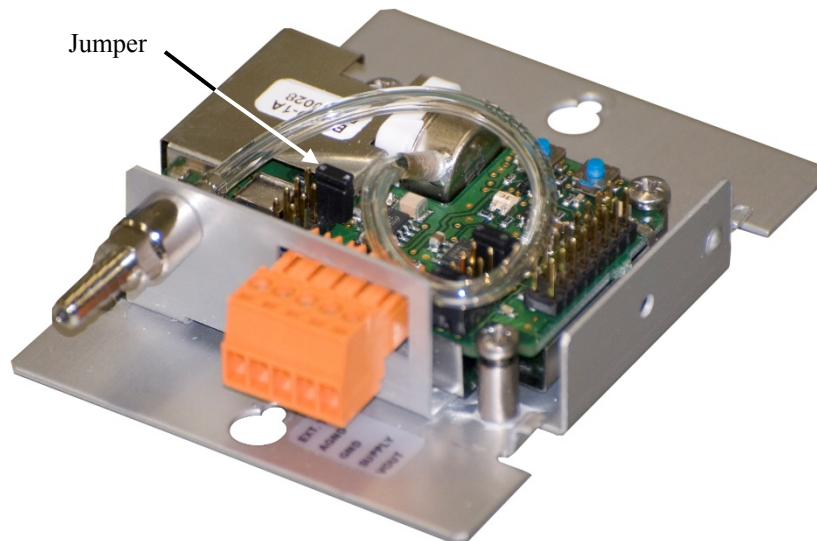


FIGURE 7-1. CS106 jumper set to shutdown mode

### 7.2 Mounting in the Enclosure

To prevent condensation, install the sensor in an environmentally protected enclosure, complete with desiccant, which should be changed at regular intervals.

---

**CAUTION**

Failure to protect the sensor from condensation may result in permanent damage.

---

The CS106 is typically mounted in a Campbell Scientific enclosure next to the datalogger. Campbell Scientific also offers the ENC100 for situations where it is desirable to house the CS106 in its own enclosure (see FIGURE 7-2). The ENC100 is a 6.7-in. x 5.5-in. x 3.7-in. enclosure that includes a compression fitting for cable entry, a vent for equalization with the atmosphere, a backplate

for mounting the CS106, and hardware for mounting the ENC100 to a tripod, tower, or pole.



*FIGURE 7-2. ENC100 is a very small enclosure that can house one CS106*

Remember that for the sensor to detect the external ambient pressure, the enclosure must vent to the atmosphere (i.e., not be “hermetically sealed”). Enclosures purchased from Campbell Scientific properly vent to the atmosphere.

---

**NOTE**

For user-supplied enclosures, it may be necessary to make a vent hole on the outer wall. In this situation, do not make the hole on one of the vertical side walls, as wind blowing around it can cause transient changes in pressure.

---

The mounting holes for the sensor are one-inch-centered (three inches apart), and will mount directly onto the holes on the backplate of Campbell Scientific enclosures. Mount the sensor with the pneumatic connector pointing vertically downwards to prevent condensation collecting in the pressure cavity, and also to ensure that water cannot enter the sensor.

### 7.3 Wiring

#### 7.3.1 Datalogger Connection

Before connecting the barometer to the datalogger, a yellow warning label must be removed from the pigtails. The warning label reminds the user of the importance of properly connecting the barometer to the datalogger. Wiring is shown in FIGURE 7-3 and TABLE 7-1.

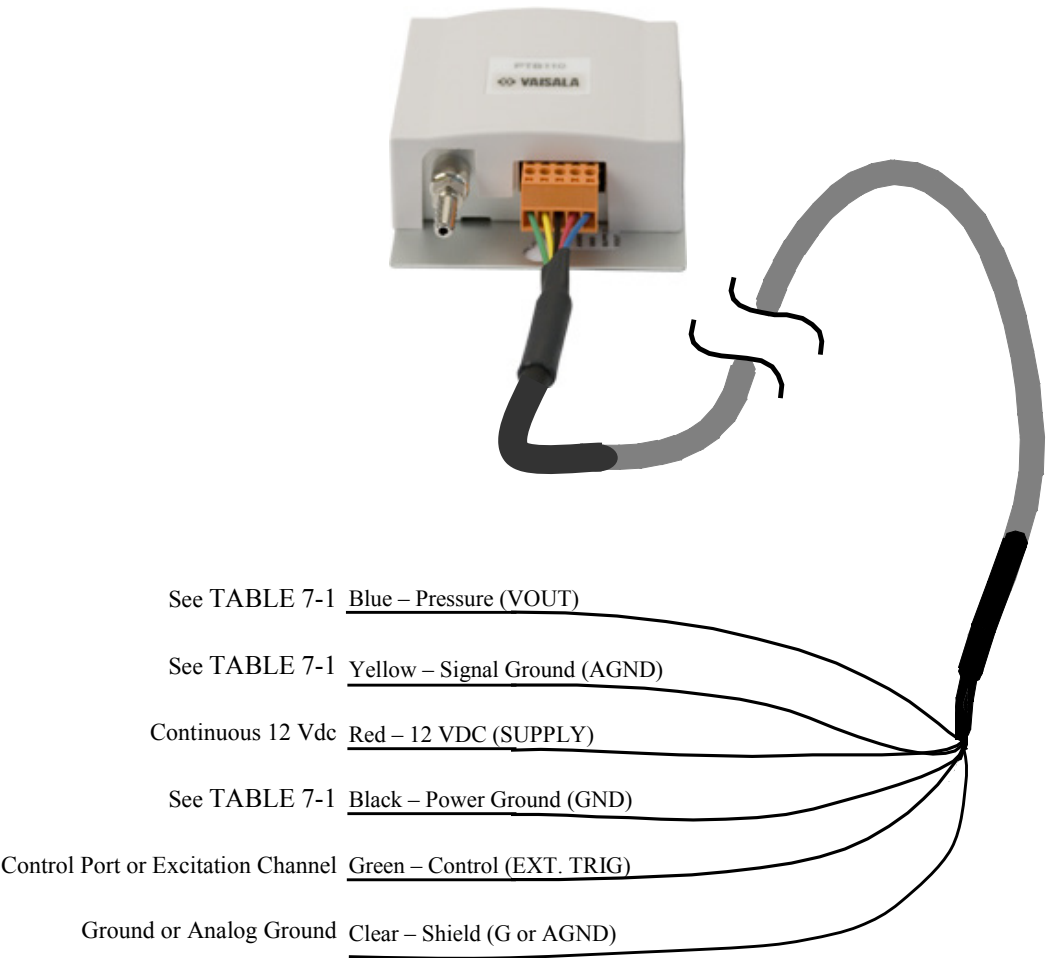


FIGURE 7-3. CS106 wiring diagram



**TABLE 7-1. Signal and Ground Connectors for CS106**

Wire	CS106 Terminal	Datalogger Single-Ended Measurement	Datalogger Differential Measurement
Blue	VOUT	S.E. Input	High Side of Diff Input
Yellow	AGND	AG (CR10(X), CR500, CR510) ⚡ (Other Dataloggers)	Low Side of Diff. Input
Black	GND	⚡ (21X, CR7, CR9000(X)) G (Other Dataloggers)	⚡ (21X, CR7, CR9000(X)) G (Other Dataloggers)
Green	EXT TRIG	Control port (use to turn power on/off)	Control port (use to turn power on/off)
Red	SUPPLY	12 Vdc	12 Vdc
Shield	Shield	G (CR10(X), CR500, CR510) ⚡ (Other Dataloggers)	G (CR10(X), CR500, CR510) ⚡ (Other Dataloggers)

**WARNING**

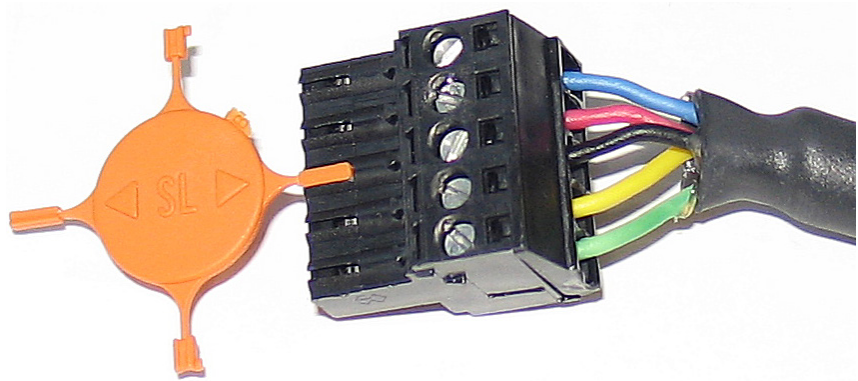

---

**Improper wiring may damage the CS106 beyond repair.**

---

**7.3.2 5-pin Screw Terminal Plug Connector**

The datalogger connects to the CS106 via a 5-pin screw terminal plug connector. This connector is removable and may be replaced. The replacement connector may come with a connector key attached to it to ensure that the connector is plugged into the CS106 right side up (see FIGURE 7-4). When the connector is right side up, it will easily plug into the barometer.



**FIGURE 7-4.** Connector key attached to 5-pin screw terminal plug connector

**WARNING**


---

**A 5-pin screw terminal that is plugged in upside down will damage the sensor — perhaps beyond repair.**

---

## 7.4 Programming

*Short Cut* is the best source for up-to-date datalogger programming code. Programming code is needed,

- when creating a program for a new datalogger installation
- when adding sensors to an existing datalogger program

If your data acquisition requirements are simple, you can probably create and maintain a datalogger program exclusively with *Short Cut*. If your data acquisition needs are more complex, the files that *Short Cut* creates are a great source for programming code to start a new program or add to an existing custom program.

### NOTE

---

*Short Cut* cannot edit programs after they are imported and edited in *CRBasic Editor*.

---

A *Short Cut* tutorial is available in Section 4, *Quickstart*. If you wish to import *Short Cut* code into either *Edlog* or *CRBasic Editor* to create or add to a customized program, follow the procedure in Appendix A, *Importing Short Cut Code into CRBasic Editor*. Programming basics for CRBasic and Edlog dataloggers are provided in the following sections; more detailed information about multiplier and offset calculations, conversion factors, long cable lengths, resolution, and correcting pressure to sea level is provided in Section 8, *Operation*. Complete program examples for select dataloggers can be found in Appendix B, *Example Programs*.

### 7.4.1 CRBasic Instructions

The **VoltSE()** measurement instruction programs CRBasic dataloggers (CR200(X), CR800-series, CR1000, CR3000, CR5000, CR9000(X)) to measure the CS106.

VoltSE( [Dest](#), [Reps](#), [Range](#), [SEChan](#), [MeasOff](#), [SettlingTime](#), [Integration](#), [Multiplier](#), [Offset](#) )

At sea level, a *multiplier* of 0.24 and an *offset* of 500 will report the barometric pressure in mbar or hPa. The *offset* will need to be adjusted if the barometer is not at sea level (see Section 8.5, *Correcting Pressure to Sea Level*). If different barometric pressure units are desired, see Section 8.2, *Conversion Factors*.

Often, the **TimeIntoInterval()** CRBasic instruction is used to only power the barometer while making the measurements. Atmospheric pressure changes little with time. In most weather station applications, measuring the barometer pressure once an hour is adequate. See Appendix B, *Example Programs*, for more information.

### 7.4.2 Edlog Instructions

The **Volt (SE) (P1)** measurement instruction programs Edlog dataloggers (CR500, CR510, CR10(X), CR23X, CR7, and 21X) to measure the CS106.

```

Volt (SE) (P1)
1: 1 Reps
2: 25 2500 mV 60 Hz Rejection Range
3: 1 SE Channel
4: 1 Loc [ CS106 ]
5: 0.240 Multiplier
6: 500 Offset

```

At sea level, a *multiplier* of 0.24 and an *offset* of 500 will report the barometric pressure in mbar or hPa. The *offset* will need to be adjusted if the barometer is not at sea level (see Section 8.5, *Correcting Pressure to Sea Level*). If different barometric pressure units are desired, see Section 8.2, *Conversion Factors*.

Often, the **If time is (P92)** Edlog instruction is used to only power the barometer while making the measurements. Atmospheric pressure changes little with time. In most weather station applications, measuring the barometer pressure once an hour is adequate. See Appendix B, *Example Programs*, for more information.

## 8. Operation

### 8.1 Multiplier and Offset Calculation

The *multiplier* and *offset* in the **VoltSE()** CRBasic or **Volt (SE) (P1)** Edlog instruction convert millivolts to millibar or hPa. The output from the sensor is 0 to 2.5 V or 0 to 2500 mV, and the sensor's operating range is from 500 to 1100 mbars (hPa). Equation 1 uses these values to calculate the multiplier:

$$\text{Multiplier: } m = \frac{1100-500}{2500-0} = \frac{600}{2500} = 0.25 \quad (1)$$

The offset is the barometric value at sea level (see Equation 2).

Offset:  $o = 500$  (mbar or hPa)

The final result according to FIGURE 8-1 is:

$$y = 0.24 \frac{\text{mbar}}{\text{mV}} + 500 \text{ mbar} \quad (2)$$

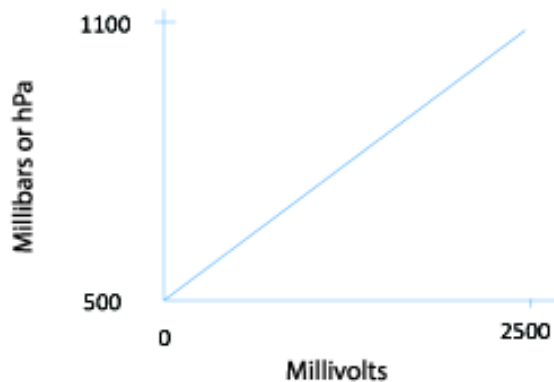


FIGURE 8-1. Point slope graph

## 8.2 Conversion Factors

In the example programs, the pressure is reported in millibars (mb). To report pressure in different units, multiply the measured pressure by the appropriate conversion factor. This is done by including an expression in a CRBasic program or using **Z=X\*F (P37)** in an Edlog program. See TABLE 8-1 below for conversion factors.

<b>TABLE 8-1. Conversion Factors for Alternative Pressure Units</b>	
<b>To find</b>	<b>Multiply by</b>
hPa or mb	1.0
kPa	0.1
mm of Hg	0.75006
in of Hg	0.02953
Psi	0.0145
Atm	0.00099
Torr	0.75006

## 8.3 Long Lead Lengths

There is a 0.06 mV/foot voltage drop in the CS106 signal leads. This voltage drop, in long lead lengths, will raise the barometric reading by approximately 1.44 mb per 100 feet.

For lead lengths greater than 20 feet, use the differential instruction (**VoltDiff()** in CRBasic or **Volt (DIFF) (P2)** in Edlog) to measure the CS106.

## 8.4 Output Resolution

When storing the values from the CS106 to a datalogger's final storage location, or to a data table, care must be taken to choose suitable scaling of the reading, or to store the value with adequate resolution to avoid losing useful resolution of the pressure measurement. The default resolution (low resolution) for Campbell Scientific dataloggers is limited to a maximum of four digits. Even then, the maximum digit value that can be displayed is 7999 for the CRBasic dataloggers and 6999 for Edlog dataloggers. If you use this option with barometric data scaled in millibars (hPa), a reading above 799.9 mb for CRBasic dataloggers (699.9 mb for Edlog dataloggers) will lose one digit of resolution (e.g., at 900 mb, the resolution is limited to 1 mb).

To retain 0.01 mb resolution, you either need to subtract a fixed offset from the reading before it is stored to avoid exceeding the 799.9 for CRBasic dataloggers (699.9 for Edlog dataloggers) threshold, or output the barometric reading in high resolution format. This can be done by using the IEEE4 format for CRBasic dataloggers or the Resolution (P78) instruction in the Edlog dataloggers. The default data output format for CR200(X) series datalogger is IEEE4.

## 8.5 Correcting Pressure to Sea Level

The weather service, most airports, radio stations, and television stations adjust the atmospheric pressure to a common reference (sea level). Equation 3 can be used to find the difference in pressure between the sea level and the site. That value ( $dP$ ) is then added to the offset (500 mb in our example programs) in the measurement instruction. U. S. Standard Atmosphere and dry air were assumed when Equation 3 was derived (Wallace, J. M. and P. V. Hobbes, 1977: *Atmospheric Science: An Introductory Survey*, Academic Press, pp. 59-61).

$$dP = 1013.25 \left\{ 1 - \left( 1 - \frac{E}{44307.69231} \right)^{5.25328} \right\} \quad (3)$$

The value  $dP$  is in millibars and the site elevation,  $E$ , is in meters. Add  $dP$  value to the offset in the measurement instruction.

Use Equation 4 to convert feet to meters.

$$E(m) = \frac{E(ft)}{3.281ft/m} \quad (4)$$

The corrections involved can be significant: e.g., at 1000 mb and 20 °C, barometric pressure will decrease by 1.1 mb for every 10 meter increase in altitude.

## 9. Maintenance and Calibration

Since the sensor is semi-sealed, minimum maintenance is required:

1. Visually inspect the cable connection to ensure it is clean and dry.
2. Visually inspect the casing for damage.
3. Ensure that the pneumatic connection and pipe are secure and undamaged.

The external case can be cleaned with a damp, lint-free cloth and a mild detergent solution.

Vaisala recommends recalibration every two years under normal use. In areas where a lot of contaminants are present, recalibration every year is recommended.

Contact Campbell Scientific, Inc. ((435) 227-9000) for an RMA number before returning the sensor for recalibration.

Should you lose the five terminal connector (pn 16004), the replacement part can be purchased from Campbell Scientific, Inc. Contact Campbell Scientific, Inc. to purchase the part.

### CAUTION

The CS106 is sensitive to static when the backplate is removed. To avoid damage, take adequate anti-static measures when handling.



# Appendix A. Importing Short Cut Code Into CRBasic Editor

---

This tutorial shows:

- How to import a *Short Cut* program into a program editor for additional refinement.
- How to import a wiring diagram from *Short Cut* into the comments of a custom program.

## A.1 Importing Short Cut Code into a Program Editor

*Short Cut* creates files that can be imported into either *CRBasic Editor* or *Edlog* program editor. These files normally reside in the C:\campbellsci\SCWin folder and have the following extensions:

- .DEF (wiring and memory usage information)
- .CR2 (CR200(X) datalogger code)
- .CR1 (CR1000 datalogger code)
- .CR8 (CR800 datalogger code)
- .CR3 (CR3000 datalogger code)
- .CR5 (CR5000 datalogger code)
- .CR9 (CR9000(X) datalogger code)
- .DLD (contain code for CR10(X), CR23X, CR500, CR510, 21X, or CR7(X) dataloggers)

The following procedures show how to import these files for editing.

### A.1.1 CRBasic Datalogger

Use the following procedure to import *Short Cut* code into *CRBasic Editor* (CR200(X), CR1000, CR800, CR3000, CR5000 dataloggers).

1. Create the *Short Cut* program following the procedure in Section 4, *Quickstart*. Finish the program and exit *Short Cut*. Make note of the file name used when saving the *Short Cut* program.
2. Open *CRBasic Editor*.
3. Click **File | Open**. Assuming the default paths were used when *Short Cut* was installed, navigate to C:\CampbellSci\SCWin folder. The file of interest has a “.CR2”, “.CR1”, “.CR8”, “.CR3”, “.CR5”, or “.CR9” extension, for CR200(X), CR1000, CR800, CR3000, CR5000, or CR9000(X) dataloggers, respectively. Select the file and click **Open**.
4. Immediately save the file in a folder different from \Campbellsci\SCWin, or save the file with a different file name.

**NOTE**

---

Once the file is edited with CRBasic Editor, *Short Cut* can no longer be used to edit the datalogger program. Change the name of the program file or move it, or *Short Cut* may overwrite it next time it is used.

---

5. The program can now be edited, saved, and sent to the datalogger.
6. Import wiring information to the program by opening the associated .DEF file. Copy and paste the section beginning with heading “-Wiring for CRXXX-” into the CRBasic program, usually at the head of the file. After pasting, edit the information such that a ' character (single quotation mark) begins each line. This character instructs the datalogger compiler to ignore the line when compiling the datalogger code.

## A.1.2 Edlog

Use the following procedure to import *Short Cut* code into the *Edlog* program editor (CR10(X), CR500, CR510, CR23X, CR7, or 21X dataloggers).

1. Create the *Short Cut* program following the procedure in Section 4, *Quickstart*. Finish the program and exit *Short Cut*. Make note of the file name used when saving the *Short Cut* program.
2. Open *Edlog*.
3. Click **File | Document DLD File**. Assuming the default paths were used when *Short Cut* was installed, navigate to C:\CampbellSci\SCWin folder. The file of interest has a “.DLD” extension. Select the file and click **Open**. The .dld file, which is a type of ASCII machine code, is imported, documented, and, when saved, given a “.CSI” extension.
4. Immediately save the file in a folder different from \Campbellsci\SCWin, or save the file with a different file name.

**NOTE**

---

Once the file is edited with *Edlog*, *Short Cut* can no longer be used to edit the program. Change the name of the program file or move it, or *Short Cut* may overwrite it.

---

5. The program can now be edited, saved, and sent to the datalogger.
6. Import wiring information to the program by opening the associated .DEF file. Copy and paste the section beginning with heading “-Wiring for CRXXX-” into the Edlog program, usually at the head of the file. After pasting, edit the information such that a ; (semicolon) begins each line, which instructs the datalogger compiler to ignore the line when compiling the datalogger code.



# Appendix B. Example Programs

---

## B.1 CRBasic Programs

### B.1.1 Example CR1000 Program Using Sequential Mode

This CR1000 program uses the sequential mode, which is the simplest mode and can be used for most meteorological applications. Although the example is for the CR1000, other CRBasic dataloggers, such as the CR200(X), CR800, CR850, CR3000, and CR9000(X) are programmed similarly.

In the example, the CR1000 measures the CS106 once an hour. To do this, the CR1000 uses a control port to turn on the CS106 one minute before the top of the hour. On the hour, the datalogger measures the CS106, and then turns the CS106 off. This example assumes that the jumper is in the default position (open).

```
'CR1000

'Declare Variables and Units
Public BattV
Public PTemp_C
Public BP
Public BP_mmHg

Units BattV=Volts
Units PTemp_C=Deg C
Units BP = hPa
Units BP_mmHg=mmHg

'Define Data Tables
DataTable(Table1,True,-1)
  DataInterval(0,60,Min,10)
  Sample(1,BP_mmHg,FP2)
EndTable

DataTable(Table2,True,-1)
  DataInterval(0,1440,Min,10)
  Minimum(1,BattV,FP2,False,False)
EndTable

'Main Program
BeginProg
'Main Scan
Scan(5,Sec,1,0)
'Default Datalogger Battery Voltage measurement 'BattV'
Battery(BattV)
'Default Wiring Panel Temperature measurement 'PTemp_C'
PanelTemp(PTemp_C,_60Hz)
'CS106 Barometric Pressure Sensor measurement 'BP_mmHg'
If TimeIntoInterval(59,60,Min) Then PortSet(1,1)
If TimeIntoInterval(0,60,Min) Then
  VoltSe(BP,1,mV2500,1,1,0,_60Hz,0.240,500)
  BP_mmHg=BP*0.75006
  PortSet(1,0)
EndIf
'Call Data Tables and Store Data
CallTable(Table1)
CallTable(Table2)
NextScan
EndProg
```

## B.1.2 Example CR1000 Program Using Pipeline Mode

Although this example is for the CR1000, other CRBasic dataloggers, such as the CR200(X), CR800, CR850, CR3000, and CR9000(X) are programmed similarly. In the example, the CR1000 measures the CS106 once an hour in a program that runs at 1 Hz. In order to keep the CR1000 running in a pipeline mode, the measurement instruction is placed outside the “If” statement. The measurement is made every scan, and the measured value is first written into a temporary variable called “CS106\_temp”. Once the CS106 is turned on one minute before the hour, the CS106 starts to make the correct pressure measurements. At the top of the hour, the correct value is copied into the current variable called “pressure”, and the sensor is turned off immediately.

The program’s integration parameter for the **VoltSE()** instruction is `_60Hz`. However, for Eddy Covariance programs or other datalogger programs that are executed at a higher frequency, the integration parameter should be `250 µs` instead of `_60Hz` or `_50Hz`. This prevents skipped scans.

```
'CR1000 Datalogger

Public CS106_temp, pressure
Units pressure = mbar

DataTable (met_data,True,-1)
  DataInterval (0,60,min,10)
  Sample (1,pressure,IEEE4)
EndTable

BeginProg
PipeLineMode
  Scan (1,sec,3,0)

'Measurement is made every scan outside the "If" statement
  VoltSE (CS106_temp,1,mV2500,1,False,0,_60Hz,0.240,500)

'Turn on CS106 one minute before the hour
  If (TimeIntoInterval (59,60,min)) Then WriteIO (&b1000,&b1000)

'Copy the correct value to a current variable called "pressure" at the top of the hour
'Turn off CS106 after the measurement
  If (TimeIntoInterval (0,60,min)) Then
    pressure = CS106_temp
    WriteIO (&b1000,&b0)
  EndIf

  CallTable met_data

NextScan
EndProg
```

## B.2 Edlog Program

Although this example is for the CR10X, other Edlog dataloggers, such as the CR510, CR23X, 21X, and CR7, are programmed similarly. In the example, the CR10X turns on the CS106 one minute before the top of the hour using a control port. On the hour the datalogger measures the CS106, and then it turns the CS106 off.

```
;{CR10X}

*Table 1 Program
01: 1          Execution Interval (seconds)

;Turn on CS106 one minute before the hour
;
1: If time is (P92)
  1: 59        Minutes (Seconds --) into a
  2: 60        Interval (same units as above)
  3: 41        Set Port 1 High

;Measure CS106 at the top of the hour
;
2: If time is (P92)
  1: 0         Minutes (Seconds --) into a
  2: 60        Interval (same units as above)
  3: 30        Then Do

    3: Volt (SE) (P1)
      1: 1      Reps
      2: 25     2500 mV 60 Hz Rejection Range
      3: 1      SE Channel
      4: 1      Loc [ CS106      ]
      5: 0.240  Multiplier
      6: 500    Offset

;Turn off CS106
;
  4: Do (P86)
    1: 51      Set Port 1 Low

5: End (P95)

;Store CS106 data once an hour
;
6: If time is (P92)
  1: 0         Minutes (Seconds --) into a
  2: 60        Interval (same units as above)
  3: 10        Set Output Flag High (Flag 0)

7: Real Time (P77)
  1: 0110      Day,Hour/Minute (midnight = 0000)

;Store in high resolution mode to retain 0.01 mb resolution
;
8: Resolution (P78)
  1: 1         High Resolution

9: Sample (P70)
  1: 1         Reps
  2: 1         Loc [ CS106      ]

*Table 2 Program
01: 0          Execution Interval (seconds)
```

\*Table 3 Subroutines

End Program

-Input Locations-

1 CS106      1 1 1



## Campbell Scientific Companies

---

**Campbell Scientific, Inc. (CSI)**

815 West 1800 North  
Logan, Utah 84321  
UNITED STATES

[www.campbellsci.com](http://www.campbellsci.com) • [info@campbellsci.com](mailto:info@campbellsci.com)

**Campbell Scientific Centro Caribe S.A. (CSCC)**

300 N Cementerio, Edificio Breller  
Santo Domingo, Heredia 40305  
COSTA RICA

[www.campbellsci.cc](http://www.campbellsci.cc) • [info@campbellsci.cc](mailto:info@campbellsci.cc)

**Campbell Scientific Africa Pty. Ltd. (CSAf)**

PO Box 2450  
Somerset West 7129  
SOUTH AFRICA

[www.csafrica.co.za](http://www.csafrica.co.za) • [cleroux@csafrica.co.za](mailto:cleroux@csafrica.co.za)

**Campbell Scientific Ltd. (CSL)**

Campbell Park  
80 Hathern Road  
Shepshed, Loughborough LE12 9GX  
UNITED KINGDOM

[www.campbellsci.co.uk](http://www.campbellsci.co.uk) • [sales@campbellsci.co.uk](mailto:sales@campbellsci.co.uk)

**Campbell Scientific Australia Pty. Ltd. (CSA)**

PO Box 8108  
Garbutt Post Shop QLD 4814  
AUSTRALIA

[www.campbellsci.com.au](http://www.campbellsci.com.au) • [info@campbellsci.com.au](mailto:info@campbellsci.com.au)

**Campbell Scientific Ltd. (CSL France)**

3 Avenue de la Division Leclerc  
92160 ANTONY  
FRANCE

[www.campbellsci.fr](http://www.campbellsci.fr) • [info@campbellsci.fr](mailto:info@campbellsci.fr)

**Campbell Scientific (Beijing) Co., Ltd.**

8B16, Floor 8 Tower B, Hanwei Plaza  
7 Guanghua Road  
Chaoyang, Beijing 100004  
P.R. CHINA

[www.campbellsci.com](http://www.campbellsci.com) • [info@campbellsci.com.cn](mailto:info@campbellsci.com.cn)

**Campbell Scientific Ltd. (CSL Germany)**

Fahrenheitstraße 13  
28359 Bremen  
GERMANY

[www.campbellsci.de](http://www.campbellsci.de) • [info@campbellsci.de](mailto:info@campbellsci.de)

**Campbell Scientific do Brasil Ltda. (CSB)**

Rua Apinagés, n.br. 2018 — Perdizes  
CEP: 01258-00 — São Paulo — SP  
BRASIL

[www.campbellsci.com.br](http://www.campbellsci.com.br) • [vendas@campbellsci.com.br](mailto:vendas@campbellsci.com.br)

**Campbell Scientific Spain, S. L. (CSL Spain)**

Avda. Pompeu Fabra 7-9, local 1  
08024 Barcelona  
SPAIN

[www.campbellsci.es](http://www.campbellsci.es) • [info@campbellsci.es](mailto:info@campbellsci.es)

**Campbell Scientific Canada Corp. (CSC)**

14532 – 131 Avenue NW  
Edmonton AB T5L 4X4  
CANADA

[www.campbellsci.ca](http://www.campbellsci.ca) • [dataloggers@campbellsci.ca](mailto:dataloggers@campbellsci.ca)

Please visit [www.campbellsci.com](http://www.campbellsci.com) to obtain contact information for your local US or international representative.