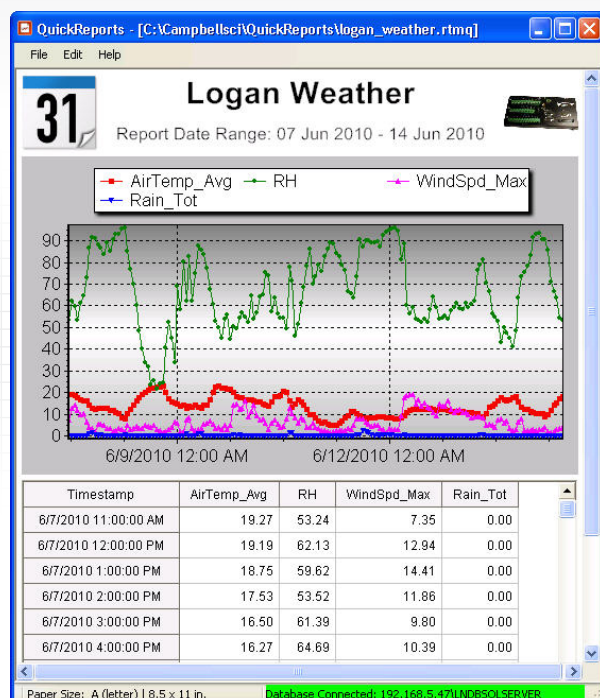



**LNDB**

LoggerNet Database Software



## Valuable Tool

Use standard database tools  
on LoggerNet data

### Overview

LNDB is a application that enables you to easily move data from a LoggerNet data cache into a database such as Microsoft SQL Server or MySQL. Then you can use industry-standard software to access and

query your data for reports. LNDB also comes with QuickReports, an application that allows you to generate simple reports from an LNDB database with just a few mouse clicks.

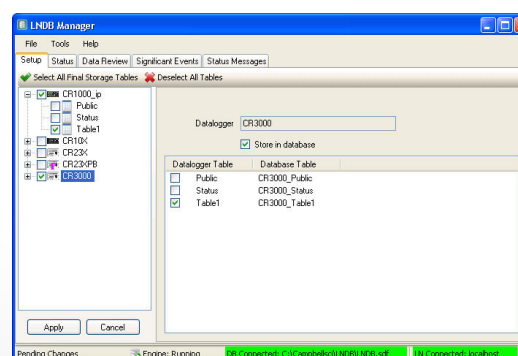
### Benefits and Features

- › Moves data from selected LoggerNet tables into a database
- › Imports data from a data file into a database table
- › Exports data from a database table into a data file
- › Includes QuickReports application to design simple reports from an LNDB database
- › Allows you to review database data
- › Monitors the LNDB Engine

### Technical Description

LNDB has two main components: LNDB Manager and LNDB Engine. LNDB Manager is used to set up a database and select the datalogger data tables that will be stored in the database. It also provides tools to monitor the LNDB Engine and to review the database data.

LNDB Engine runs as a service and sends the selected data from the LoggerNet data cache to the database. Additionally, LNDB includes utilities for importing and exporting data, and generating simple reports from your database data.



When a station is highlighted in the left tree, the station setup screen is shown. On the station setup screen, tables can be enabled/disabled for storage.

More info: 435.227.9120

[campbellsci.com/lndb](http://campbellsci.com/lndb)


## License for Use

LNDB is protected by United States copyright law and international copyright treaty provisions. Installation of LNDB constitutes an agreement to abide by the provisions of its licensing agreement. The agreement grants the user a non-exclusive license to use the software in accordance with the following:

- (1) The purchase of this software allows you to install and use a single instance of the software on one physical computer or one virtual machine only.
- (2) This software cannot be loaded on a network server for the purposes of distribution or for access to the software by multiple operators. If the software can be used from any computer other than the computer on which it is installed, you must license a copy of the software for each additional computer from which the software may be accessed.
- (3) If this copy of the software is an upgrade from a previous version, you must possess a valid license for the earlier version of software. You may continue to use the earlier copy of software only if the upgrade copy and earlier version are installed and used on the same computer. The earlier version of software may not be installed and used on a separate computer or transferred to another party.
- (4) This software package is licensed as a single product. Its component parts may not be separated for use on more than one computer.
- (5) You may make one (1) backup copy of this software onto media similar to the original distribution, to protect your investment in the software in case of damage or loss. This backup copy can be used only to replace an unusable copy of the original installation media.

LNDB software may not be sold, included, or redistributed in any other software or altered in any way without prior written permission from Campbell Scientific.

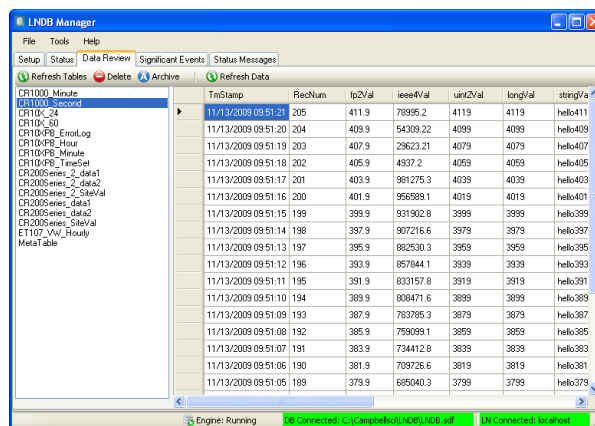
## Specifications

- Computer Operating System: Windows® 7, 8, or 10; both 32 and 64 bit operating systems are supported

## Supported Databases

- Microsoft® SQL Server® (Express, Standard, and Enterprise) 2005 – 2016
- Microsoft® SQL Server® Compact 3.5 SP2
- MySQL 5.0 – 5.7 (with an appropriate 32-bit Unicode ODBC database driver; for example, MySQL 5.0 or 5.1 with MySQL 3.51.27 or 5.1.6 ODBC database driver<sup>3</sup>; MySQL 5.6 with MySQL 5.3 ODBC database driver)
- May work with other versions of SQL Server Express, SQL Server Compact, or MySQL but they haven't been tested

<sup>3</sup>Earlier versions of 5.x ODBC database drivers have known issues.



The screenshot shows the LNDB Manager application with the Data Review tab selected. On the left, a list of tables is shown, including CR1000\_Minute, CR1000\_Schedule, CR1000\_24, CR1000\_40, CR1000P0\_EmailLog, CR1000P0\_Hour, CR1000P0\_Minute, CR1000P0\_TimeSet, CR2005series\_2\_data1, CR2005series\_2\_data2, CR2005series\_2\_SiteVal, CR2005series\_data1, CR2005series\_data2, CR2005series\_SiteVal, ET100\_Val\_Hourly, and MetaTable. The main pane displays data for the selected table, CR1000\_Minute, with columns: TmStamp, RecNum, Ip2Val, ieee4Val, unit2Val, longVal, and stringVal. The data shows a series of readings over time, with values ranging from 205 to 189 for RecNum and various numerical and string values for the other columns.

TmStamp	RecNum	Ip2Val	ieee4Val	unit2Val	longVal	stringVal
11/13/2009 09:51:21	205	411.9	78995.2	4119	4119	hello411
11/13/2009 09:51:20	204	409.9	54309.22	4099	4099	hello409
11/13/2009 09:51:19	203	407.9	29623.21	4079	4079	hello407
11/13/2009 09:51:18	202	405.9	4937.2	4059	4059	hello405
11/13/2009 09:51:17	201	403.9	981275.3	4039	4039	hello403
11/13/2009 09:51:16	200	401.9	956589.1	4019	4019	hello401
11/13/2009 09:51:15	199	399.9	931902.8	3999	3999	hello399
11/13/2009 09:51:14	198	397.9	907216.6	3979	3979	hello397
11/13/2009 09:51:13	197	395.9	882530.3	3959	3959	hello395
11/13/2009 09:51:12	196	393.9	857844.1	3939	3939	hello393
11/13/2009 09:51:11	195	391.9	833157.8	3919	3919	hello391
11/13/2009 09:51:10	194	389.9	808471.6	3899	3899	hello389
11/13/2009 09:51:09	193	387.9	783785.3	3879	3879	hello387
11/13/2009 09:51:08	192	385.9	759099.1	3859	3859	hello385
11/13/2009 09:51:07	191	383.9	734412.8	3839	3839	hello383
11/13/2009 09:51:06	190	381.9	709726.6	3819	3819	hello381
11/13/2009 09:51:05	189	379.9	685040.3	3799	3799	hello379

The Data Review tab shows tables and data from the database. When a table on the left side is selected, the data for the table is shown on the right side.