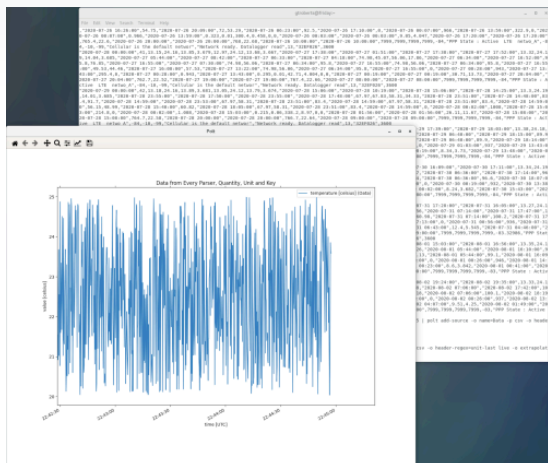




LNLINUX

Linux-Based LoggerNet Server



A LoggerNet Version for Linux

Overview

Current Version: 4.7

LoggerNet Linux provides a solution for those who want to run the LoggerNet server in a Linux environment. The package includes a Linux version of the LoggerNet server. A Windows version of LoggerNet Remote is required. The Windows-based client applications in LoggerNet Remote are run on a separate

computer, and they are used to manage the LoggerNet Linux server.

A copy of the current software license for use agreement for LoggerNet Linux is available in the [LoggerNet for Linux Instruction Manual](#).

Benefits and Features

- Capable of running a LoggerNet server in a Linux environment
- Includes all LoggerNet functions
- Provides user- and group-level security for data loggers and data access
- Can be managed from a remote Windows PC using LoggerNet Remote
- Runs as a daemon (Linux equivalent to a Windows service)
- Exports data to third-party applications using command-line tools (CoraScript) or LoggerNet Remote
- Can be accessed by multiple LoggerNet Remote client connections and users at the same time
- Capable of setting up subnets of the network map
- Includes many of the functions of LoggerNet Admin but without a user interface; UI provided by LoggerNet Remote

Detailed Description

LoggerNet Linux provides a solution for those who want to run the LoggerNet server in a Linux environment. The package includes a Linux version of the LoggerNet server. A Windows version of LoggerNet Remote is required. The Microsoft Windows-based client applications in LoggerNet Remote are

run on a separate computer, and are used to manage the LoggerNet Linux server.

Note: LoggerNet Linux requires LoggerNet Remote, which is available on the [Ordering Info page](#).

Specifications

Current Version	4.7	RPM Distribution	Red Hat (64 bit)
Operating System	Windows 11 or 10 (for LoggerNet Remote)	Debian Distribution	64 bit

For comprehensive details, visit: www.campbellsci.com/linlinux 



Campbell Scientific, Inc. | 815 W 1800 N | Logan, UT 84321-1784 | (435) 227-9120 | www.campbellsci.com
AUSTRALIA | BRAZIL | CANADA | CHINA | COSTA RICA | FRANCE | GERMANY | INDIA | SOUTH AFRICA | SPAIN | THAILAND | UK | USA

© 2024 Campbell Scientific, Inc. | 02/21/2024