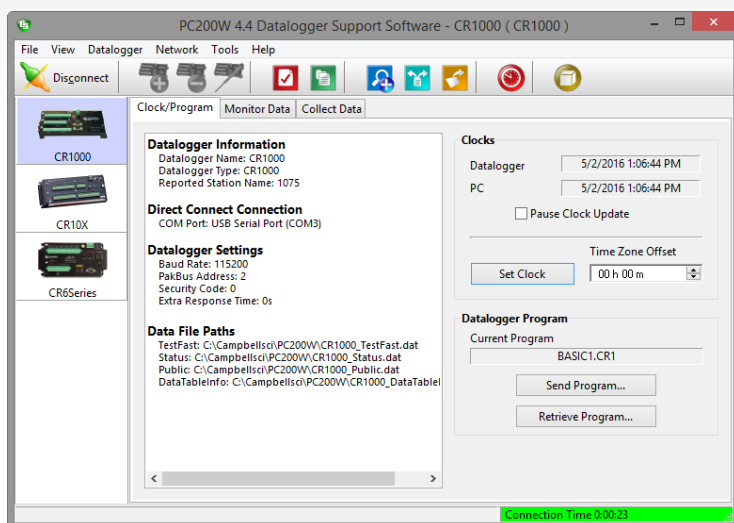




PC200W Version 4

Starter Software



Simple, Versatile

Basic tools, download free of charge

Overview

PC200W is a free starter software package designed for first-time users or users with simple data communication needs; it provides basic tools (e.g., clock set, program download, monitor data, retrieve data). PC200W supports direct connections between a PC and datalogger (no telecommunications or scheduled data-collection support).

Communications¹

PC200W allows you to:

- › Send programs to the dataloggers
- › Collect data
- › Set the datalogger clock
- › Access a terminal emulation mode
- › Display real-time measurements

Data Processing and Display

PC200W collects and stores data in comma separated files on your PC. It includes the View Pro program that displays data files in tabular or graphical form. For mixed-array dataloggers, a simple Split program is included that separates arrays in a data file into separate files.

Benefits and Features

- › Provides basic tools (e.g., clock set, program download, monitor measurements, retrieve data, terminal emulation)
- › Compatible with all of our contemporary dataloggers and many retired dataloggers (e.g., CR510, CR10X, 21X, CR23X)
- › Communicates with mixed-array, table, and PakBus® datalogger operating systems
- › Download, at no charge, from: www.campbellsci.com/downloads

Card Convert

CardConvert is used to convert and save binary data from a CompactFlash® card, microSD® card, or PC Card. CompactFlash cards are compatible with our CR3000, CR1000, CR5000, and CR9000X dataloggers; microSD cards are compatible with our CR1000X and CR6 dataloggers; and PC Cards are compatible with our CR5000 and CR9000X dataloggers.

Datalogger Programming

PC200W includes Short Cut² for creating simple datalogger programs. Programs created with the CRBasic Editor³ or Edlog⁴ can be sent to the datalogger using PC200W.

¹PC200W only supports direct communications. Telemetry requires either LoggerNet or PC400 Datalogger Support Software. LoggerNet also supports scheduled data collection. For more information, contact a Campbell Scientific applications engineer.

²Short Cut Program Generator can also be downloaded, at no charge, from www.campbellsci.com/downloads.

³CRBasic is a program editor included in LoggerNet and PC400 Datalogger Support Software.

⁴Edlog is a program editor included in LoggerNet and PC400 Datalogger Support Software.



Installation

From www.campbellsci.com/downloads, users can download PC200W, at no charge.

Requirements

› Windows 7, 8, or 10.

License For Use

PC200W is copyrighted software. Campbell Scientific distributes this software free of charge to enable users to work with Campbell Scientific data acquisition equipment. PC200W may be freely copied; however, neither PC200W nor any of its files may be sold or included in any other software or altered in any way without prior permission from Campbell Scientific, Inc.

Limited Warranty

Campbell Scientific, Inc., does not warrant that the software will meet licensee's requirements or that the software or documentation are error free or that the operation of the software will be uninterrupted. Campbell Scientific, Inc., is not responsible for problems caused by computer hardware, computer operating systems or the use of Campbell Scientific, Inc.'s software with non-Campbell Scientific, Inc. software.

All warranties of merchantability and fitness for a particular purpose are disclaimed and excluded. Campbell Scientific, Inc., shall not in any case be liable for special, incidental, consequential, indirect, or other similar damages even if Campbell Scientific, Inc., has been advised of the possibility of such damages.

Campbell Scientific, Inc., is not responsible for any costs incurred as result of lost profits or revenue, loss of use of the software, loss of data, cost of re-creating lost data, the cost of any substitute program, claims by any party other than licensee, or for other similar costs.

Licensee's sole and exclusive remedy is set forth in this limited warranty. Campbell Scientific, Inc.'s aggregate liability arising from, or relating to, this agreement or the software or documentation (regardless of the form of action; e.g., contract, tort, computer malpractice, fraud and/or otherwise) is limited to the purchase price paid by the licensee.



**CAMPBELL
SCIENTIFIC**

Campbell Scientific, Inc. | 815 W 1800 N | Logan, UT 84321-1784 | (435) 227-9120 | www.campbellsci.com
USA | AUSTRALIA | BRAZIL | CANADA | CHINA | COSTA RICA | FRANCE | GERMANY | SE ASIA | SOUTH AFRICA | SPAIN | UK

© 1998, 2017
Campbell Scientific, Inc.
October 17, 2017