

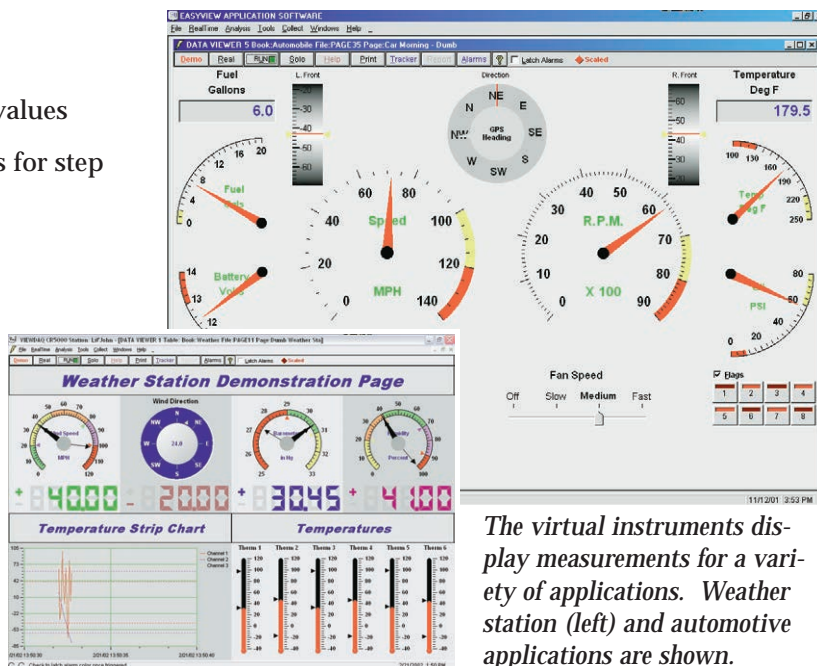
Real-Time Data Display & Graphing Software

ViewDAQ

ViewDAQ is an object-oriented software package designed for use with Campbell Scientific's CR5000 and CR9000 dataloggers that allows you to create windows (pages) containing virtual instruments that display real-time data. A fully functional page can be developed in as little as five minutes.

Features

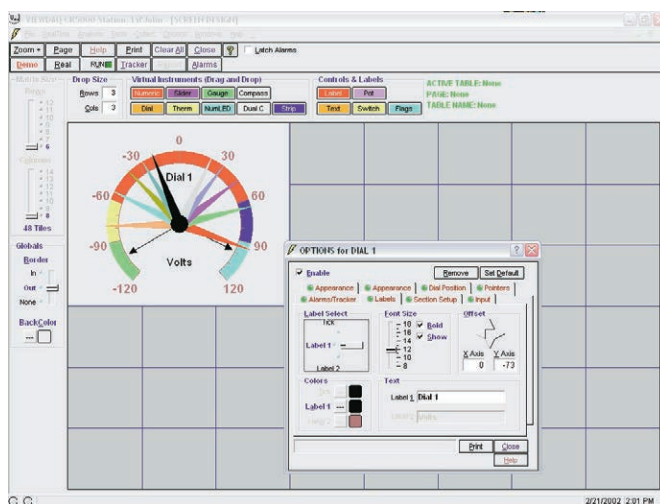
- Includes a variety of virtual instruments for displaying real-time values
- Provides switches and potentiometers for step and linear control
- Allows user control of position, size, colors, orientation, and scales
- Displays changes in the design mode as they are made
- Uses drag and drop functions to design the pages
- Binds pages into books
- Allows up to 50 books to be contained in a library
- Retrieves data via a COM port, parallel port, T-link, or Ethernet link
- Includes extensive on-line help



The virtual instruments display measurements for a variety of applications. Weather station (left) and automotive applications are shown.

Screen Design

The screen design window includes a list of virtual instruments such as numeric display, virtual dial, virtual thermometer, virtual gauge, compass, and dual compass. These virtual instruments can be dragged and dropped anywhere on the page. You set the size of the virtual instrument and other options specific to the particular virtual instrument. Besides virtual instruments, this window allows you to enter text and labels, set flags and alarms, and control background colors and page borders. Switches and potentiometers are provided for control functions.



To add a virtual instrument, set the drop size (the number of rectangles the virtual instrument will occupy) and drag the virtual instrument to the desired location. Click on the right mouse button to set its attributes.



CAMPBELL SCIENTIFIC, INC.

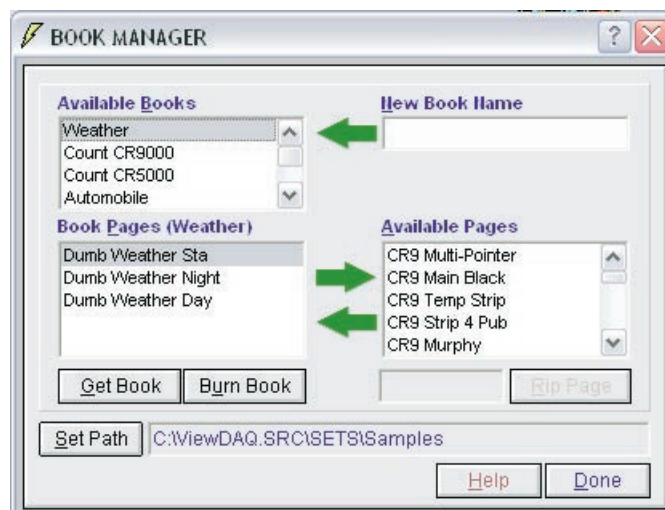
815 W. 1800 N. • Logan, Utah 84321-1784 • (435) 753-2342 • FAX (435) 750-9540 • www.campbellsci.com

Communications

ViewDAQ communicates with a CR5000 or CR9000 datalogger via a COM port, parallel port, T-link, or Ethernet link. Both manual and scheduled data collection is supported. You can retrieve the data as ASCII or binary characters and can include a time stamp. ViewDAQ also supports transferring programs to and from the datalogger.

Book Management

Once several pages have been created, you can bind them into a book. You add pages to a book by selecting them from a list. Up to ten pages can be bound into a book. One page can be bound into several books.



The book manager organizes the books and pages and facilitates the retrieval of a specific page.

Tools

ViewDAQ provides:

- Built-in general purpose editor for editing logger programs or viewing any ASCII or ANSI file
- Quick access to Windows Explorer and File Manager
- A field monitor available in the design mode for rapidly checking tables and fields
- Quick access to Microsoft Excel and Windows calculator
- Comm Link, Station Name, Logger Clock, Logger Status, Download, and Logger Files tools
- Manual and scheduled data retrieval

Help System

ViewDAQ's comprehensive help system includes three options that provide varying amounts of information:

- Tool tip text — move the mouse over any control and a brief description will pop up
- "What's This" button — press this button then move the question mark to any item and receive more detailed information than the tool tip provides
- Help button or F1 key — press the Help button or F1 key to access a Help window that provides a comprehensive description

Computer Requirements

ViewDAQ runs on Windows 95, 98, 2000, ME, NT, and XP computers. Campbell Scientific recommends using a computer with at least 256 Mbyte of RAM and 1 GHz processor to achieve optimal performance.



CAMPBELL SCIENTIFIC, INC.

815 W. 1800 N. • Logan, Utah 84321-1784 • (435) 753-2342 • FAX (435) 750-9540
Offices also located in: Australia • Brazil • Canada • England • France • South Africa • Spain

Copyright © 2002
Campbell Scientific, Inc.
Printed March 2002