

## CM270 Installation

This version began shipping in March 2024. It includes the three following main assemblies. For older versions that have different components, refer to the original Installation Guide available at [www.campbellsci.com/cm270](http://www.campbellsci.com/cm270).

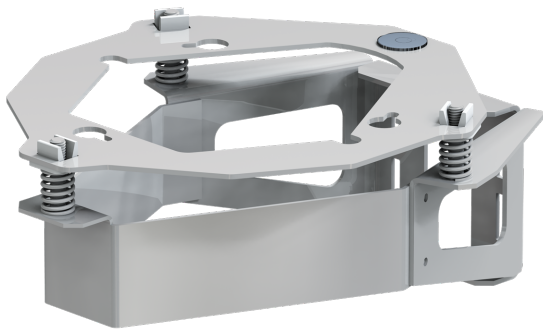


Figure 1. Main mounting bracket and bucket mount

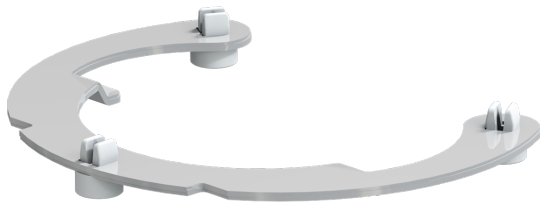


Figure 2. Holder plate with grommets

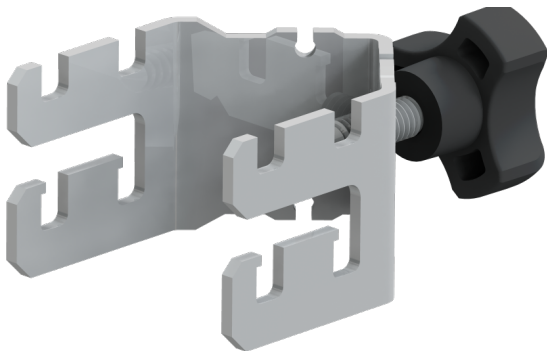


Figure 3. V-clamp with knob

Required tool:

- Long #2 Phillips screwdriver

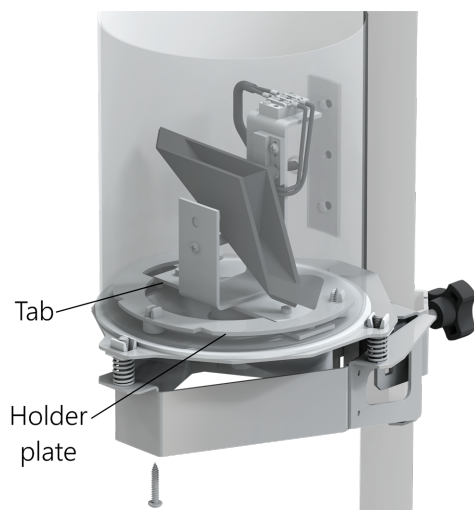
Installation procedure:

1. If three feet are mounted to the bottom of the rain gage, remove them.
2. If a side bracket is mounted to the rain gage, remove it then reinsert the screws to plug the holes.
3. Remove the funnel from the top of the rain gage.



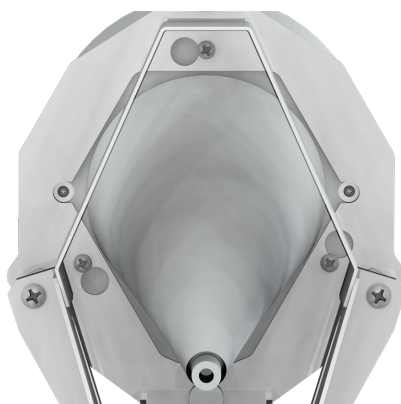
Figure 4. Top funnel removed from the rain gage

4. Insert the holder plate (see [Figure 1-2](#) [p. 1] and [Figure 2](#) [p. 1]) with the bent tabs fitted under the tipping mechanism mounting plate. Holes in the rain gage and grommets should line up with the holes in the internal plate so that the tipping mechanism screws do not need to be moved or loosened.



*Figure 5. Holder plate mounted on the rain gage*

5. If using a bottom funnel, place the funnel on the rain gage (see [Figure 6](#) [p. 2]).



*Figure 6. Bottom funnel inserted between the bracket and rain gage.*

6. Place the self-threading screws in the three mounting holes on the bottom of the bucket (see [Figure 7](#) [p. 2]). Just start them into the grommets. Do not tighten.



*Figure 7. Self-threading screws in mounting holes (bottom funnel not shown)*

7. Attach the rain gage to the rest of the CM270 rain gage mount by inserting the self-threading screw heads in the key slots and twisting the bracket (see [Figure 8](#) [p. 2]). Tighten the self-threading screws.



*Figure 8. Self-threading screws in key slots*

8. Replace the top funnel.



*Figure 9. Rain gage mounted on CM270 bracket*

9. Attach the CM270 to a 2.5 to 5.1 cm (1 to 2 in) outer diameter pole by using the V-clamp. The V-clamp knob has Vibra-tite VC3 on the threads for a thread lock. Larger poles use the outer notches (Figure 10 [p. 3]). Smaller poles use the inner notches (Figure 11 [p. 3]).



*Figure 10. Rain gage mounted on larger pole*



*Figure 11. Rain gage mounted on smaller pole*

10. Level the gage using three leveling screws (Figure 12 [p. 3]) and a bubble level.



*Figure 12. Leveling screws*

# Global Sales and Support Network

A worldwide network to help meet your needs



## Campbell Scientific Regional Offices

### Australia

**Location:** Garbutt, QLD Australia  
**Phone:** 61.7.4401.7700  
**Email:** [info@campbellsci.com.au](mailto:info@campbellsci.com.au)  
**Website:** [www.campbellsci.com.au](http://www.campbellsci.com.au)

### Brazil

**Location:** São Paulo, SP Brazil  
**Phone:** 11.3732.3399  
**Email:** [vendas@campbellsci.com.br](mailto:vendas@campbellsci.com.br)  
**Website:** [www.campbellsci.com.br](http://www.campbellsci.com.br)

### Canada

**Location:** Edmonton, AB Canada  
**Phone:** 780.454.2505  
**Email:** [dataloggers@campbellsci.ca](mailto:dataloggers@campbellsci.ca)  
**Website:** [www.campbellsci.ca](http://www.campbellsci.ca)

### China

**Location:** Beijing, P. R. China  
**Phone:** 86.10.6561.0080  
**Email:** [info@campbellsci.com.cn](mailto:info@campbellsci.com.cn)  
**Website:** [www.campbellsci.com.cn](http://www.campbellsci.com.cn)

### Costa Rica

**Location:** San Pedro, Costa Rica  
**Phone:** 506.2280.1564  
**Email:** [info@campbellsci.cc](mailto:info@campbellsci.cc)  
**Website:** [www.campbellsci.cc](http://www.campbellsci.cc)

### France

**Location:** Montrouge, France  
**Phone:** 0033.0.1.56.45.15.20  
**Email:** [info@campbellsci.fr](mailto:info@campbellsci.fr)  
**Website:** [www.campbellsci.fr](http://www.campbellsci.fr)

### Germany

**Location:** Bremen, Germany  
**Phone:** 49.0.421.460974.0  
**Email:** [info@campbellsci.de](mailto:info@campbellsci.de)  
**Website:** [www.campbellsci.de](http://www.campbellsci.de)

### India

**Location:** New Delhi, DL India  
**Phone:** 91.11.46500481.482  
**Email:** [info@campbellsci.in](mailto:info@campbellsci.in)  
**Website:** [www.campbellsci.in](http://www.campbellsci.in)

### Japan

**Location:** Kawagishi, Toda City, Japan  
**Phone:** 048.400.5001  
**Email:** [jp-info@campbellsci.com](mailto:jp-info@campbellsci.com)  
**Website:** [www.campbellsci.co.jp](http://www.campbellsci.co.jp)

### South Africa

**Location:** Stellenbosch, South Africa  
**Phone:** 27.21.8809960  
**Email:** [sales@campbellsci.co.za](mailto:sales@campbellsci.co.za)  
**Website:** [www.campbellsci.co.za](http://www.campbellsci.co.za)

### Spain

**Location:** Barcelona, Spain  
**Phone:** 34.93.2323938  
**Email:** [info@campbellsci.es](mailto:info@campbellsci.es)  
**Website:** [www.campbellsci.es](http://www.campbellsci.es)

### Thailand

**Location:** Bangkok, Thailand  
**Phone:** 66.2.719.3399  
**Email:** [info@campbellsci.asia](mailto:info@campbellsci.asia)  
**Website:** [www.campbellsci.asia](http://www.campbellsci.asia)

### UK

**Location:** Shephed, Loughborough, UK  
**Phone:** 44.0.1509.601141  
**Email:** [sales@campbellsci.co.uk](mailto:sales@campbellsci.co.uk)  
**Website:** [www.campbellsci.co.uk](http://www.campbellsci.co.uk)

### USA

**Location:** Logan, UT USA  
**Phone:** 435.227.9120  
**Email:** [info@campbellsci.com](mailto:info@campbellsci.com)  
**Website:** [www.campbellsci.com](http://www.campbellsci.com)